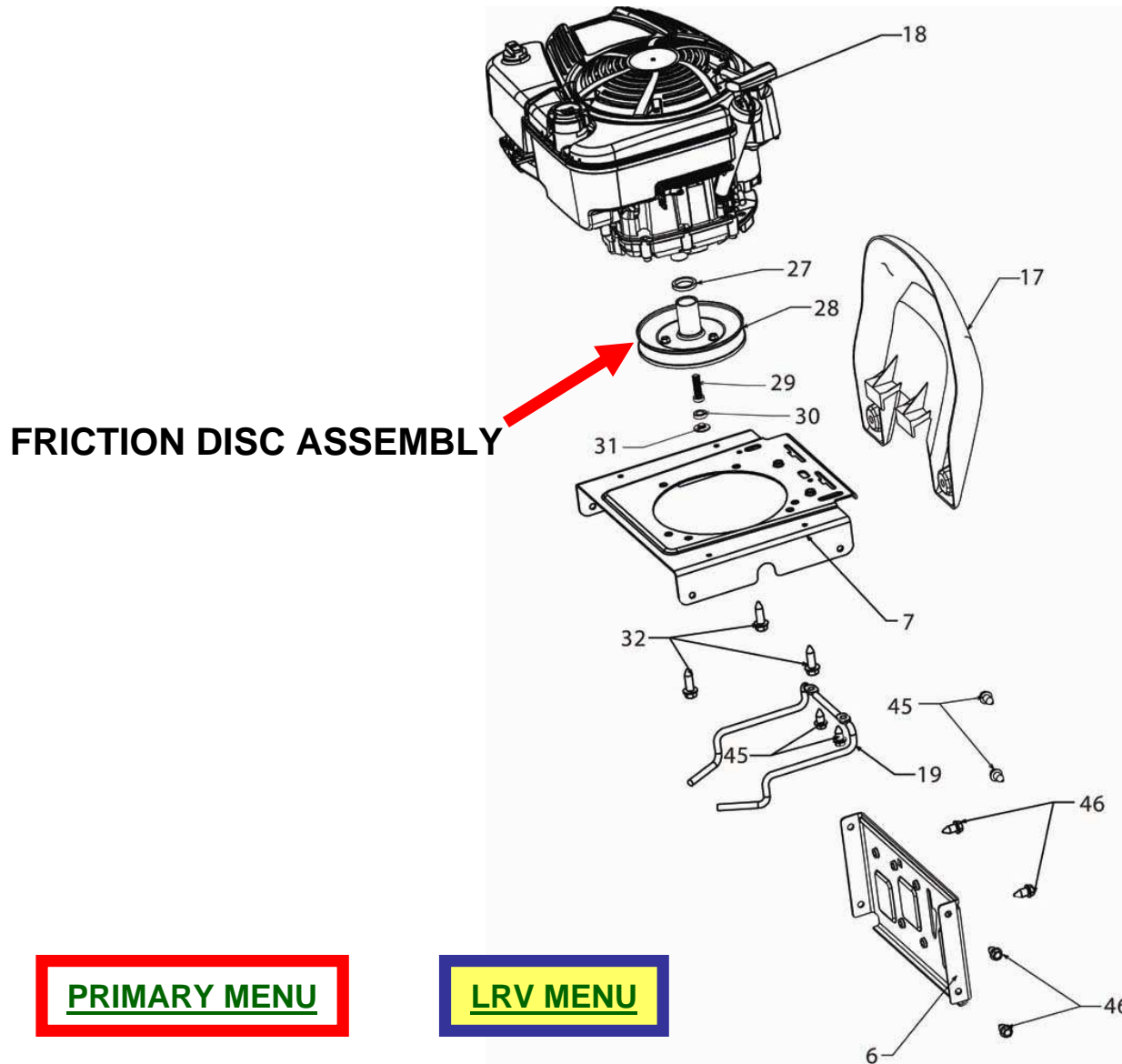


## Remove The Friction Disc Assembly



**FRICTION DISC ASSEMBLY**

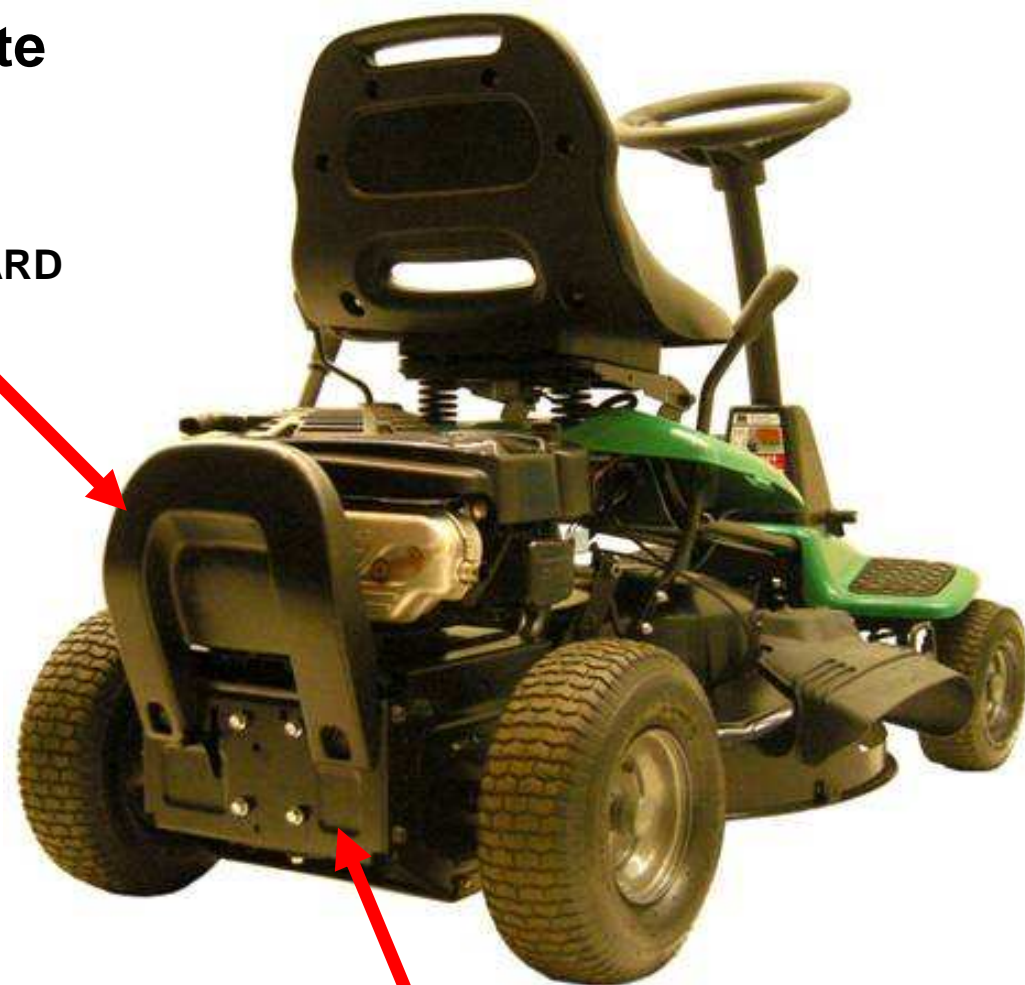
**PRIMARY MENU**

**LRV MENU**

## Remove The Engine And Engine Plate

- Park the LRV on a level surface.
- Release the brake.
- Remove the engine guard and the rear plate from the LRV.
- Remove the spark plug wire from the spark plug.
- Use the first eight slides from the procedure to remove the transmission to remove the engine.

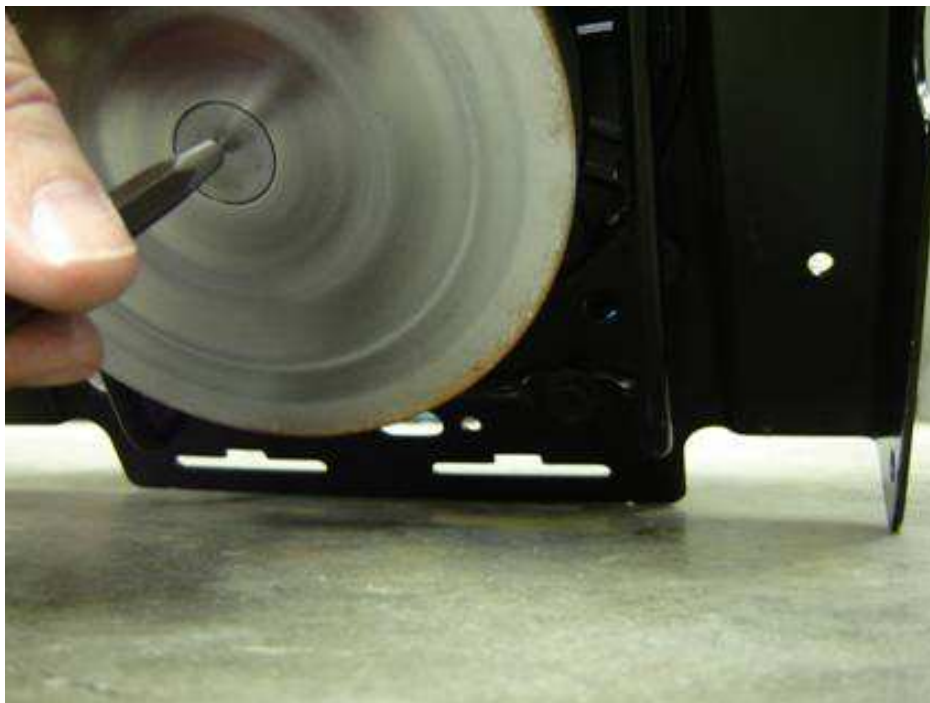
ENGINE GUARD



REAR PLATE

[RETURN TO  
MAIN MENU](#)

## Remove The Neutral Spacer

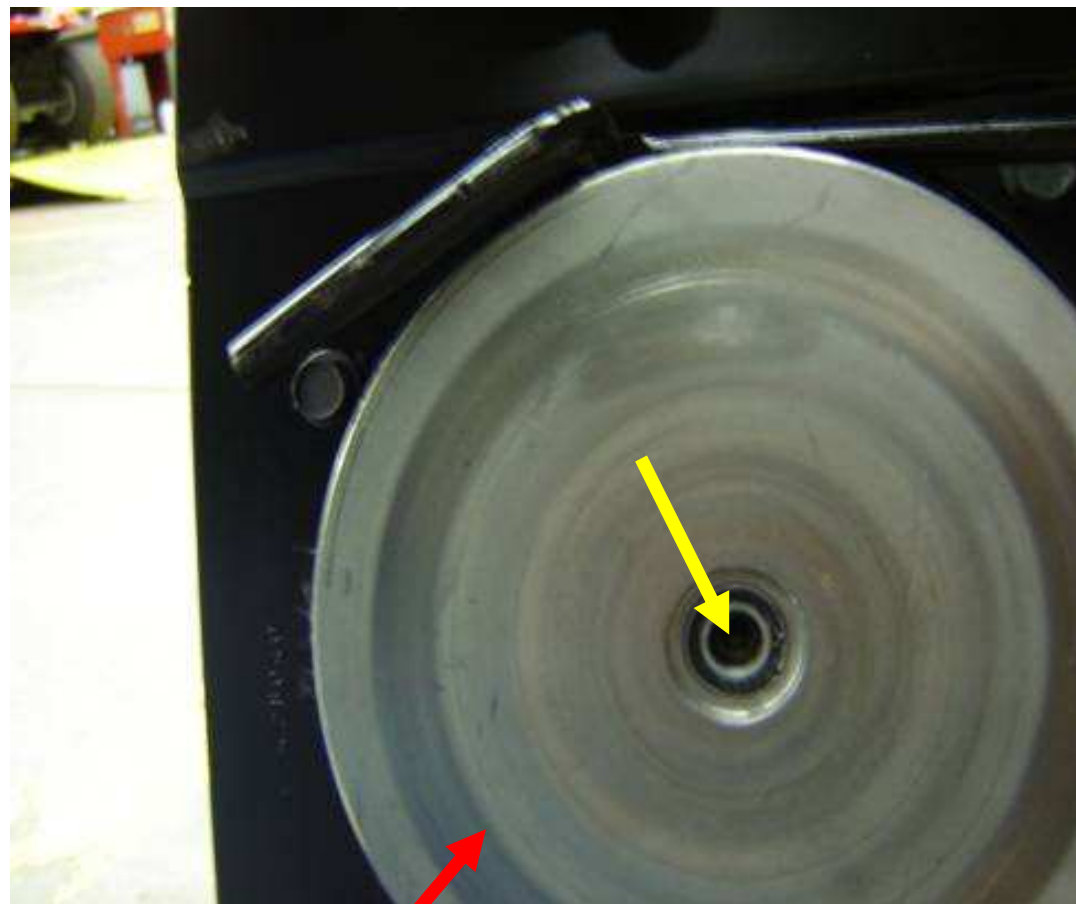


- Using a sharp punch, break away the neutral spacer near the edge.
- This will allow you to pry the neutral spacer from the friction disc assembly.

[RETURN TO  
MAIN MENU](#)

## Remove Engine Bolt

- The engine bolt is a 3/8-24 screw which is removed with a 3/16 Allen wrench.
- Pull off plate as you unscrew the engine bolt.



FRICION DISC ASSEMBLY

[RETURN TO  
MAIN MENU](#)

## Neutral Spacer

- The neutral spacer is assembled in the middle of the friction disc assembly.
- It sits on a bearing so that there is a neutral when in contact with the rubber tread of the friction assembly wheel.
- You will need a new neutral spacer when assembling the friction disc assembly to the engine crankshaft.



[RETURN TO  
MAIN MENU](#)

## Reassembling Friction Disc Assembly

To assemble:

- Apply anti-seize compound the engine crankshaft.
- Slide the friction disc onto the crankshaft, and tighten the engine bolt at 15 to 18 Ft Lbs.
- Place the neutral spacer insert into the opening .



NEUTRAL SPACER

FRICTION DISC ASSEMBLY

[RETURN TO  
MAIN MENU](#)

## Reassembling Friction Disc Assembly

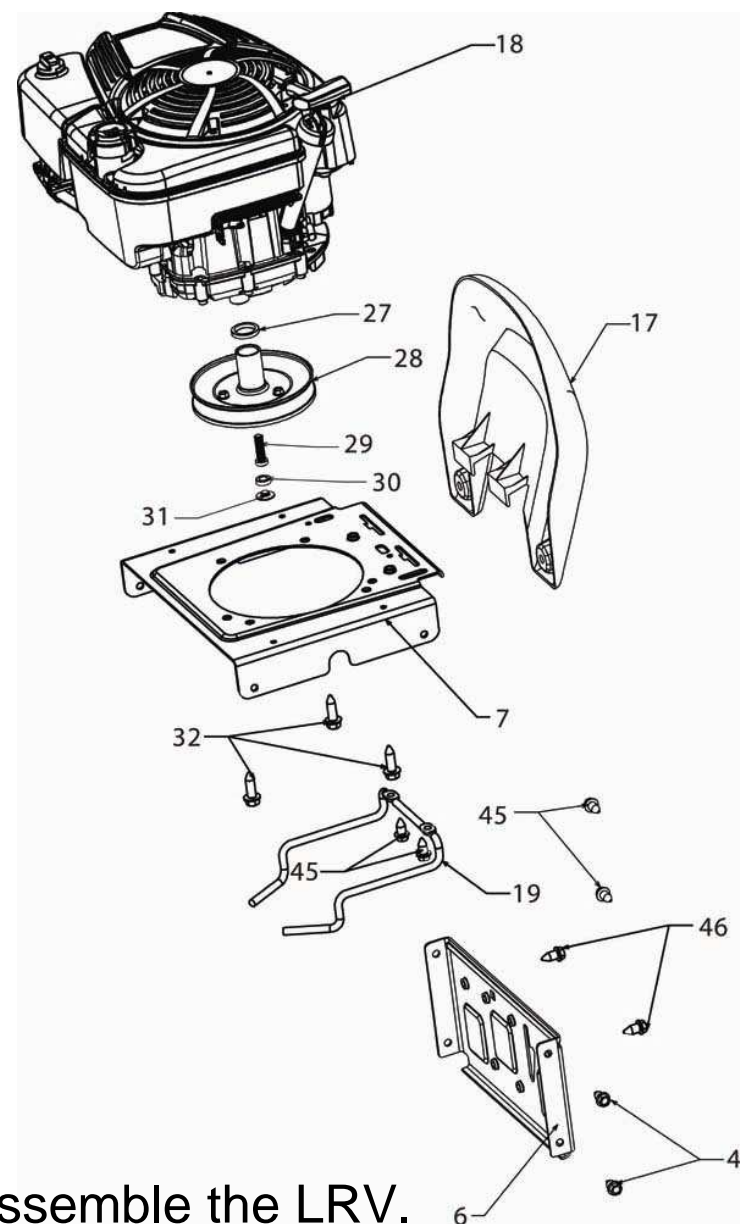


- Use a socket that is a larger diameter than the spacer as an installation tool.
- Carefully tap the spacer flush with the friction disc assembly.
- If the spacer is not flush it will damage the rubber tread on the friction wheel assembly.
- Use rubbing alcohol only to clean the friction disc before the engine is installed onto the LRV.

[RETURN TO  
MAIN MENU](#)

## PARTS

- 6 COVER, FRICTION DRIVE
- 7 PLATE, ENGINE
- 17 GUARD, ENGINE
- 18 ENGINE
- 19 KEEPER, BELT
- 27 SPACER, ENGINE
- 28 DISC, FRICTION ASM
- 29 BOLT, SCKT HD 3/8-24 X 1 .25
- 30 BEARING
- 31 SPACER, NEUTRAL
- 32 BOLT, 3/8-16 X .280
- 45 BOLT, 5/16-18 X 3/4
- 46 BOLT, 5/16-18 X 1/2



- Reverse the previous steps to reassemble the LRV.

[RETURN TO  
MAIN MENU](#)



**THE END**

**RETURN TO  
MAIN MENU**