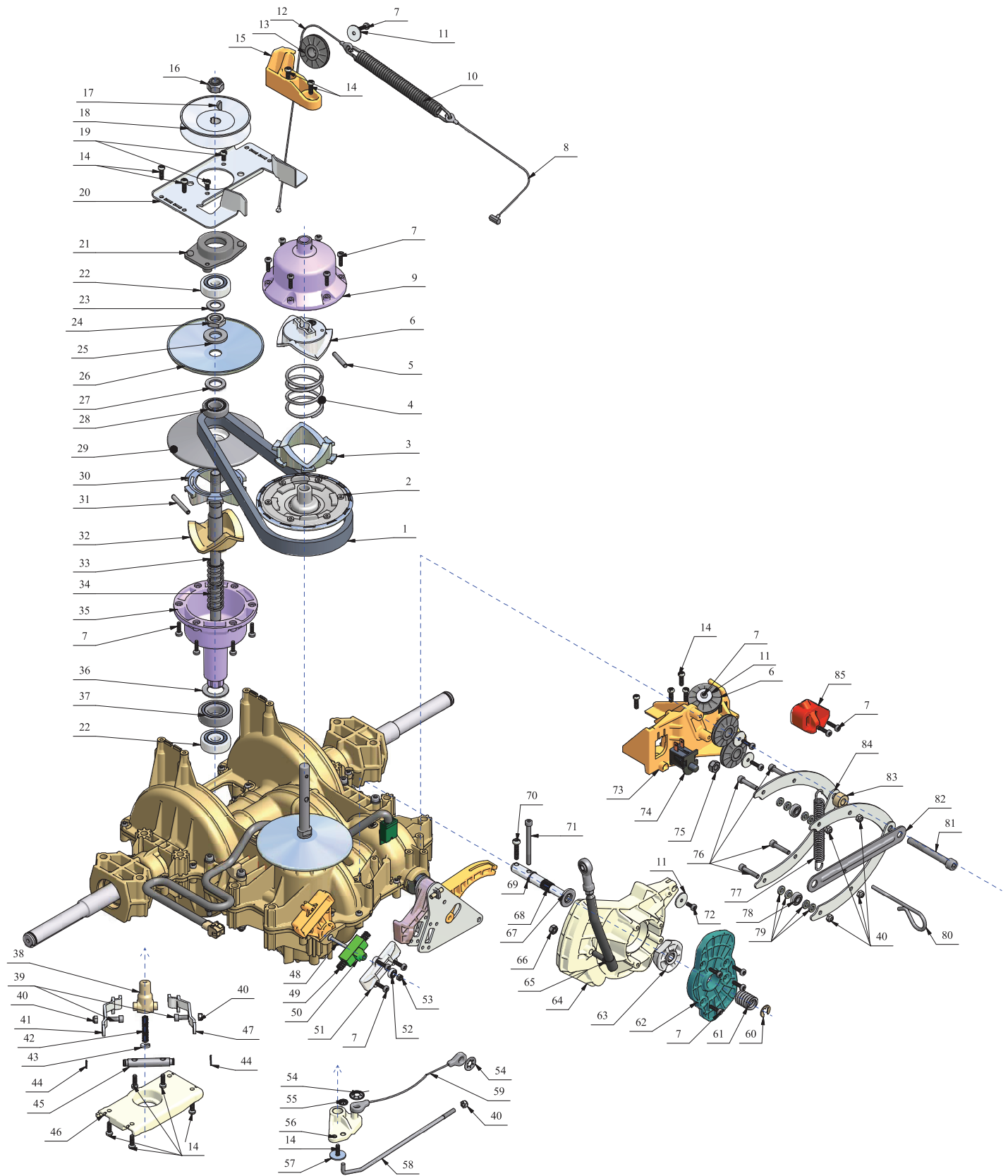


TRACTOR - - MODEL NUMBER 944.609340

GENTRANS TRANSAXLE



TRACTOR - - MODEL NUMBER 944.609340

GENTRANS TRANSAXLE

| KEY NO. | PART NO. | DESCRIPTION | KEY NO. | PART NO. | DESCRIPTION |
|---------|----------|-----------------------------|---------|----------|------------------------------|
| 1 | 426740 | Belt | 45 | 426789 | Axle |
| 2 | 426739 | Flange | 46 | 426788 | Inferior Plate |
| 3 | 426738 | Ramp | 47 | 426787 | Lever |
| 4 | 426737 | Spring | 48 | 426786 | Screw M4 (0.7Nm) |
| 5 | 426736 | Pin | 49 | 426785 | Spring |
| 6 | 426735 | Fixed R amp | 50 | 426784 | Inversion Axle |
| 7 | 426734 | Screw 4 x 16 (torque 2.2Nm) | 51 | 426783 | Cover |
| 8 | 426733 | Cable | 52 | 426782 | Ball Bearing 604.2 RS |
| 9 | 426732 | Cap | 53 | 426781 | Nut M4 |
| 10 | 426731 | Spring | 54 | 426780 | Starlock Ø8 |
| 11 | 426730 | Washer | 55 | 426779 | Starlock Ø4 |
| 12 | 426729 | Cable | 56 | 426778 | Lever |
| 13 | 426728 | Cable Sheave | 57 | 426777 | Washer 5 x 20 x 1 |
| 14 | 426727 | Screw 5 x 16 (torque 2.2Nm) | 58 | 426776 | Rod |
| 15 | 426726 | Support 1 Sheave | 59 | 426775 | Cable |
| 16 | 426725 | Nut M12 | 60 | 426774 | Clip |
| 17 | 426724 | Key 4 x 6.5 | 61 | 426773 | Spring |
| 18 | 426723 | Pulley | 62 | 426772 | Cam |
| 19 | 426722 | Screw 5 x 10 (torque 2.2Nm) | 63 | 426771 | Cone |
| 20 | 426721 | Superior Plate | 64 | 426770 | Cam |
| 21 | 426720 | Bushing | 65 | 426769 | Rod |
| 22 | 426710 | Ball Bearing 6301.2 RS | 66 | 426768 | Nut 1/4" (5Nm) |
| 23 | 426709 | Washer 13 x 22 x 1.5 | 67 | 426767 | Washer 13 x 24 x 2,5 |
| 24 | 426708 | Scerw M14 x 1.5 | 68 | 426766 | Axle |
| 25 | 426707 | Washer 15.1 x 29.5 x 3 | 69 | 426765 | Clip 12 x 1 |
| 26 | 426706 | Flange Ø15.1 | 70 | 426763 | Screw 5 x 25 (Torque 3.3Nm) |
| 27 | 426704 | Washer 15.7 x 25.3 x 2 | 71 | 426764 | Screw M5 x 60 (Torque 3.3Nm) |
| 28 | 426703 | Ball Bearing 6002.2 RS | 72 | 426762 | Screw 4 x 10 (Torque 2.2Nm) |
| 29 | 426702 | Flange Ø17.7 | 73 | 426761 | Support |
| 30 | 426701 | Mobile Ramp 40° | 74 | 426758 | Switch |
| 31 | 426700 | Pin 5 x 40 | 75 | 426756 | Nut M8 |
| 32 | 426699 | Fixed Ramp 40° | 76 | 426755 | Screw M5x25 (Torque 2.2Nm) |
| 33 | 426698 | Variator Shaft | 77 | 426754 | Spring |
| 34 | 426697 | Variator Spring | 78 | 426753 | Ball Bearing 625.2 RS |
| 35 | 426696 | Cap | 79 | 426752 | Washer 5.3 x 10 x 1.7 |
| 36 | 426693 | Washer 21 x 33 x 1.5 | 80 | 426751 | Pin Ø4 |
| 37 | 426692 | Ball Bearing 6004 2 RS | 81 | 426750 | Screw M8 x 70 (1.1m) |
| 38 | 426691 | Cable Hook | 82 | 426749 | Plate |
| 39 | 426690 | Screw M5 x 12 | 83 | 426748 | Spacer |
| 40 | 426689 | Nut M5 | 84 | 426747 | Jaws |
| 41 | 426687 | Lever | 85 | 426746 | Snap-In |
| 42 | 426686 | Spring | | | |
| 43 | 426791 | Washer 3 x 11.7 x 2 | | | |
| 44 | 426790 | Clips 8 x 0.8 | | | |

NOTE: All component dimensions given in U.S. inches
1 inch = 25.4 mm