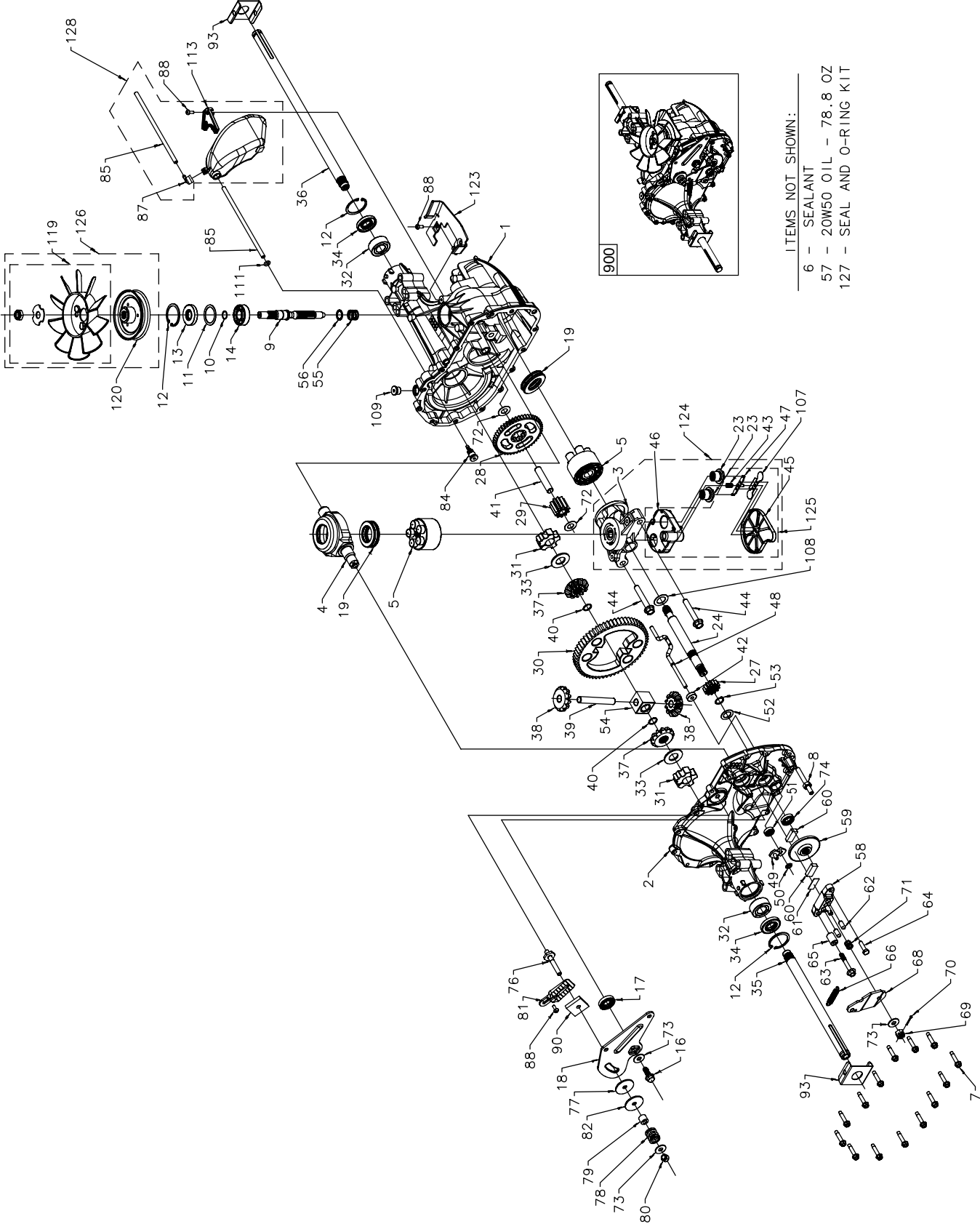


ILLUSTRATED PARTS BREAKDOWN

HYDRO-GEAR TRANSAXLE

MODEL NO. 351-0510

HYDRO-GEAR TRANSAXLE - - MODEL NUMBER 351-0510



HYDRO-GEAR TRANSAXLE - - MODEL NUMBER 351-0510

| Key No. | Part No. | Description | Key No. | Part No. | Description |
|---------|----------|--|---------|----------|--|
| 1 | 170351 | Kit, Main Housing | 68 | 401263 | Arm-brake, RH |
| | | Main Housing, Machined | 69 | 170415 | Nut, Castle 5/16-24 |
| | | Bushing .865 X .985 X .790 | 70 | 170416 | Pin, Cotter 3/32x3/4 |
| 2 | 170352 | Kit, Side Housing | 71 | 170417 | Brake Spring |
| | | Side Housing, Machined | 72 | 170418 | Washer (310-0750) |
| | | Bushing .865 X .985 X .790 | 73 | 142884 | Washer, Flat |
| | | Bushing .624 X .719 X .562 | 74 | 170419 | Seal, Oil |
| 3 | 170353 | Kit, Center Section | 75 | 170420 | Ass'y Check Plug |
| | | Center Section, Machined | 76 | 170421 | Bolt, Stud 5/16-24 |
| | | Bushing .707 X .788 X .591 | 77 | 170422 | Puck, Friction |
| 4 | 170354 | Swashplate, Trunnion Machined | 78 | 142969 | Spring |
| 5 | 169898 | Kit, Cylinder Block (10CC) | 79 | 142980 | Spacer |
| | | Block - Cylinder | 80 | 150778 | Nut, Nylon Insert Hex Lock 5/16-24 |
| | | Piston | 81 | 170423 | Wedge, Friction |
| | | Spring, Compression | 82 | 170424 | Clip, Washer |
| | | Washer Thrust | 84 | 170425 | Fitting, 5/16 X Sae 5/32 Tube |
| 6 | 178322 | Sealant Tube | 85 | 170426 | Hose, Expansion Tank |
| 7 | 170356 | Hexflange Screw 1/4-20 X 1.25 | 87 | 401264 | Cap, Barbed Vent |
| 8 | 170357 | Stud, 5/16-24 Hex Double End | 88 | 178334 | Bolt, Self Tapping (BDR) |
| 9 | 170358 | Shaft, Input | 90 | 170430 | Puck, Inner Wedge |
| 10 | 170359 | Retaining Ring | 93 | 170431 | Spring Clip, Housing |
| 11 | 170360 | Spacer | 107 | 170432 | Deflector |
| 12 | 169870 | Retaining Ring | 108 | 170433 | Washer, Motor Shaft .71id X 1.15OD X .03 Thick |
| 13 | 170361 | Seal, Lip .67 X 1.58 X .276 | 109 | 170434 | Plug, Straight Thrust 9/16-18 |
| 14 | 173158 | Bearing, Ball 6203 (BDR) | 111 | 170435 | O-ring .7 X .301 ID |
| 16 | 170362 | Hex Flange Head Screw 1/4-20 X 1.25 | 113 | 170437 | Bracket, Support Expansion Tank |
| 17 | 170363 | Seal, Lip 18 X 32 X 7 | 119 | 191031 | Kit, Fan - Washer - Nut |
| 18 | 170364 | Arm, Control | | | Fan, 7 In |
| 19 | 173159 | Bearing, Thrust (10cc) | | | Hex Lock Nut 1/2-20 (Nylon Insert) |
| 23 | 170365 | Check Plug Assembly | | | Washer, Or Slotted, .53 X 1.63 X .06 |
| 24 | 170366 | Shaft Motor | 120 | 170440 | Pulley |
| 27 | 170367 | Gear, Pinion, 13T | 123 | 401265 | Belt Keeper |
| 28 | 170368 | 10T / 48T Gear | 124 | 170444 | Kit, Center Section Filter Bypass |
| 29 | 170369 | Gear, 10T Jackshaft | | | Center Section Machining |
| 30 | 170370 | 60T Bullgear | | | Base Filter W/ Poppet |
| 31 | 170371 | Sleeve Bearing .75 X 1.75 X .625 | | | Check Plug Assembly, .027 Washer |
| 32 | 170389 | Sleeve Bearing (Outboard) .75 X 1.575 X .625 | | | Check Plug Assembly, Washer |
| 33 | 142991 | Washer | | | Spring, Bypass |
| 34 | 170390 | Lip Seal, Axle Shaft | | | Actuator, Bypass |
| 35 | 170391 | Shaft, Axle (Keyed, R.H.) | | | Deflector |
| 36 | 170392 | Shaft, Axle (Keyed, L.H.) | | | Bottom, Filter |
| 37 | 401260 | Miter Gear (Splined) | | | Bushing, .707 X .788 X .591 |
| 38 | 401261 | Miter Gear | 125 | 170445 | Kit, Filter |
| 39 | 150809 | Differential Shaft (310-0750) | | | Bottom, Filter |
| 40 | 170393 | Retaining Ring | | | Spring, Bypass |
| 41 | 170394 | Pin, Jackshaft | | | Actuator, Bypass |
| 42 | 170395 | Magnet, Ring | | | Deflector |
| 43 | 170396 | Spring, Bypass | | | Base, Filter W/ Poppet |
| 44 | 150797 | Bolt 3/8-24 X 2-1/2 | 126 | 170446 | Kit, Fan/pulley |
| 45 | 170397 | Filter | | | Hex Jam 1/20-20 (Nylon Inser) |
| 46 | 170398 | Base, Filter | | | Washer, OD Slotted, .53 X 1.63 X .06 |
| 47 | 170399 | Actuator, Bypass | | | Fan, 7 In |
| 48 | 170400 | Rod, Bypass Actuator | | | Pulley |
| 49 | 196599 | Arm, Bypass | 127 | 170447 | Kit, Seal |
| 50 | 170402 | Retaining Ring .25 External | | | Lip Seal .67 X 1.58 X .276 |
| 51 | 170403 | Seal, Lip .741 X .25 X .25 | | | Lip Seal 18 X 32 X 7 |
| 52 | 170404 | Washer, Flat 0.050" (210-1000) | | | Lip Seal .706 X 1.584 X .25 |
| 53 | 170405 | Retaining Ring | | | Lip Seal .741 X .250 X .250 TC |
| 54 | 170406 | Bearing, Center Block | | | Oil Seal .625 X 1.0 X .25 |
| 55 | 142977 | Spring, Helical Compression | | | O-ring .07 X .301 ID |
| 56 | 142978 | Washer, Block Thrust | 128 | 401266 | Kit, Expansion Tank |
| 57 | | 20vv-50 Oil | | | Tank, Expansion Assembly |
| 58 | 142929 | Kit, Brake Yoke | | | Cap, Barbed Vent |
| 59 | 170408 | Rotor, Brake | | | Bolt, Self Tapping 10-32 X 1/2 |
| 60 | 142883 | Brake Puck | | | Bracket, Support Expansion Tank |
| 61 | 142882 | Brake Puck Plate | | | Hose, Expansion Tank |
| 62 | 170409 | Pin, Brake Actuating | 900 | 197942 | Transaxle Assembly-Complete |
| 63 | 170410 | Hfhcs 1/4-20 X 2 W/patch, Special Flange | | | Note: All Component Dimensions Given In U.S. Inches 1 Inch = 25.4 mm |
| 64 | 142892 | Bolt, Nylok | | | |
| 65 | 170411 | Spacer, Brake Torsion Spring | | | |
| 66 | 401262 | Spring, Brake Arm Bias | | | |