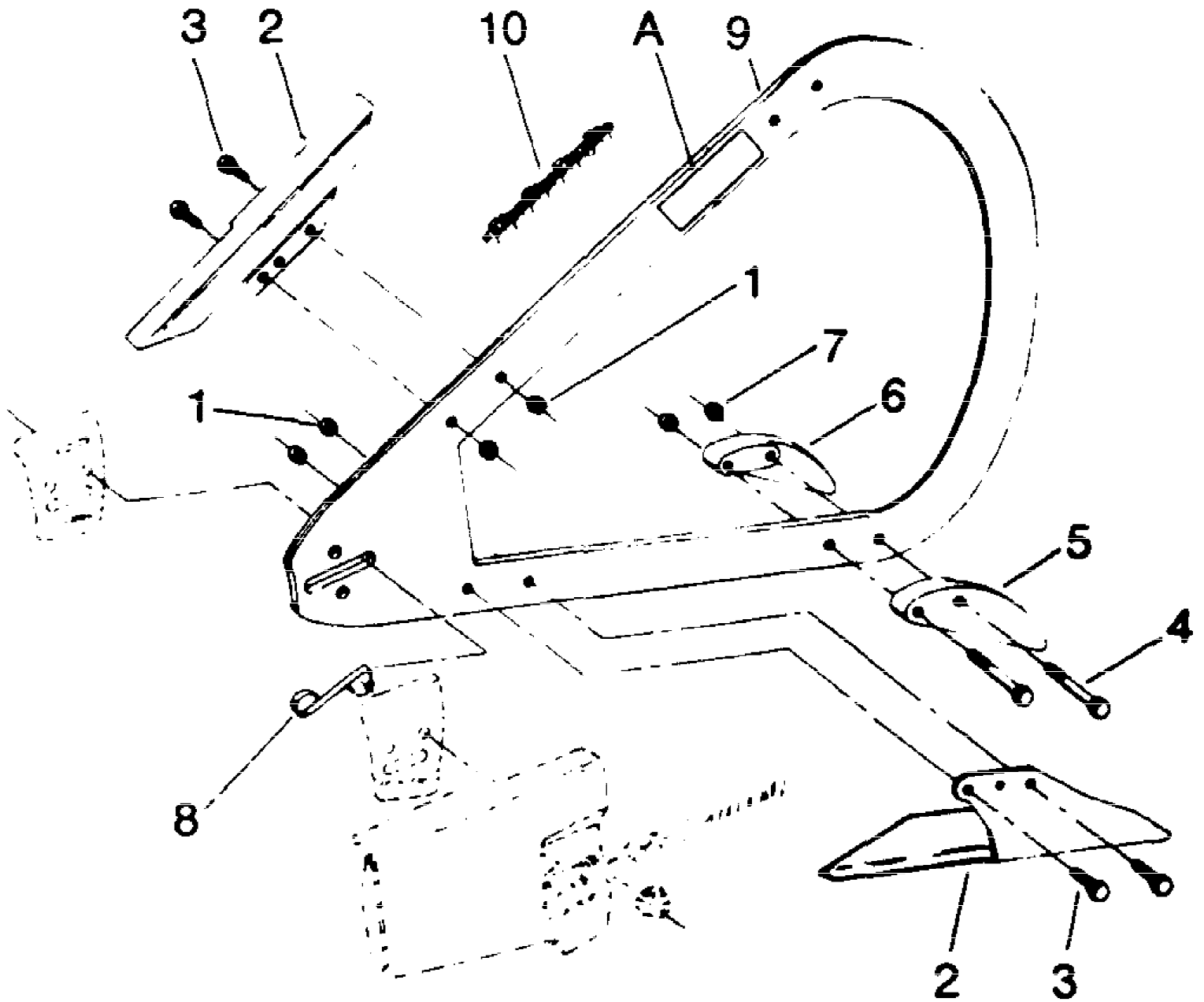


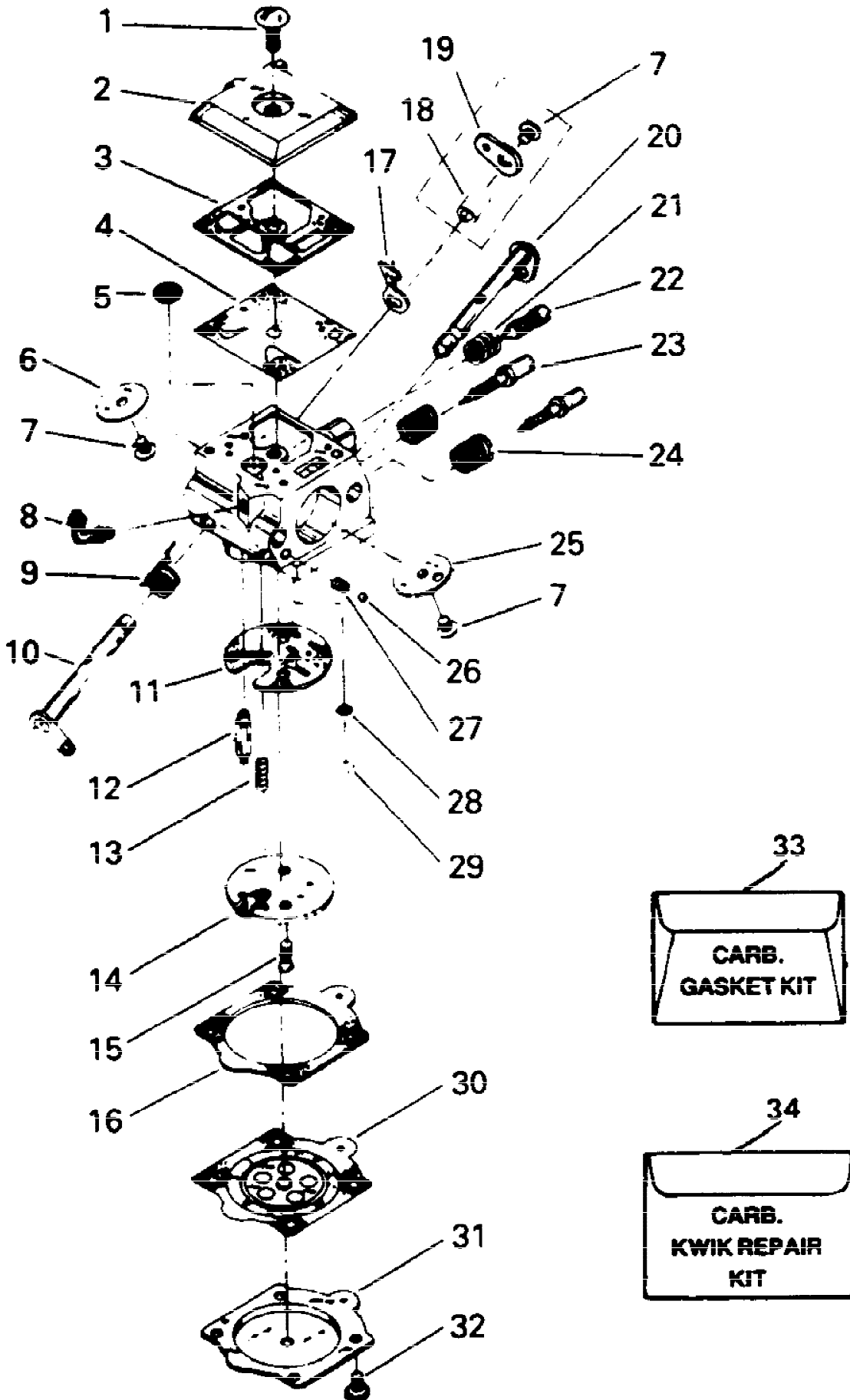
No
Diagram
Available

Parts List
Only

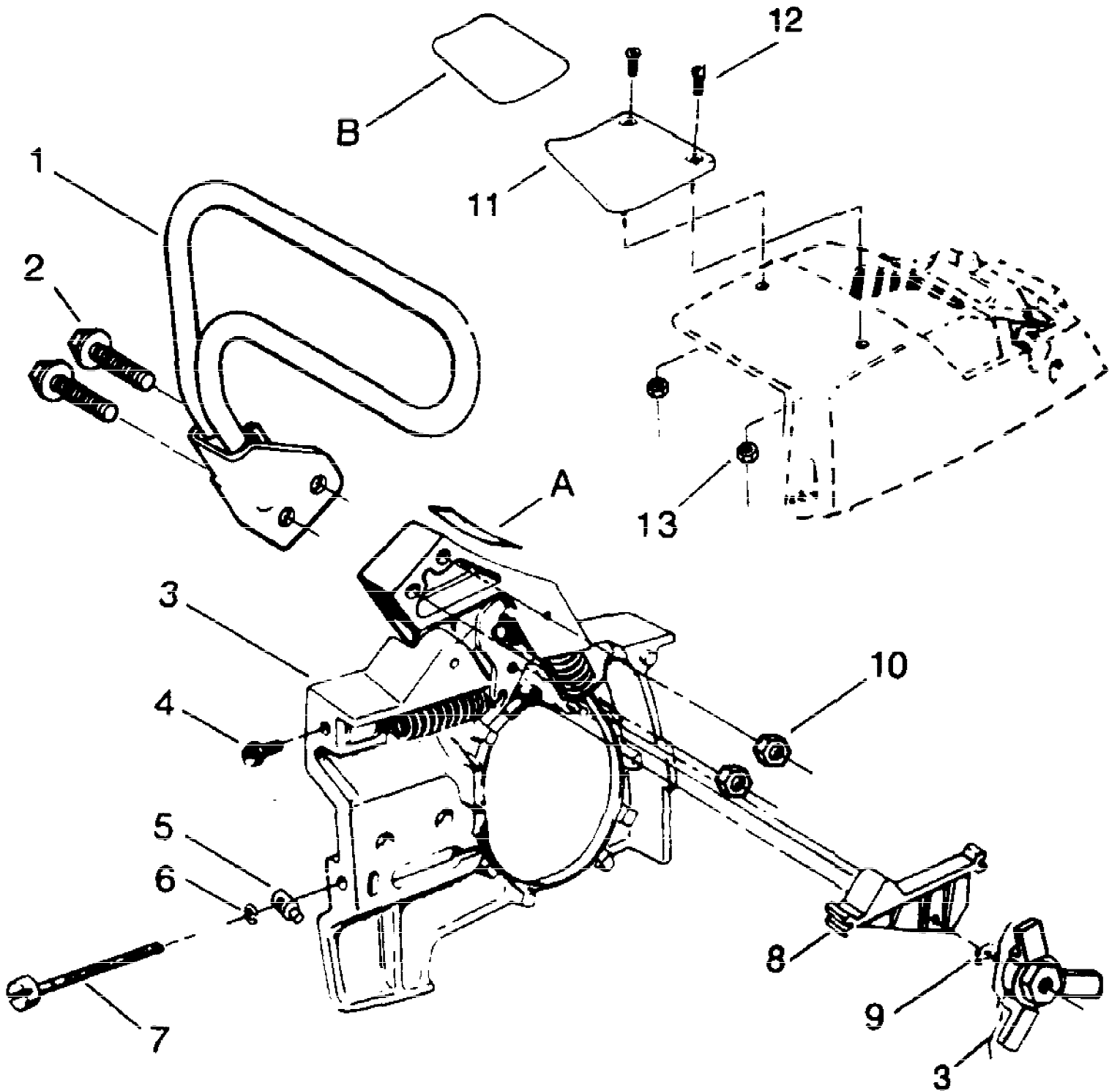
Ref #	Part Number	Qty	S/P/F	Description
	952044235	1		Bow Guide 13".050/ 3/8 pitch
	51102	1		Chain Description & Drive Links P72-80
	952044236	1		Bow Guide 14" .050/ 3/8 pitch
	51134	1		Chain Description & Drive Links P72-87



Ref #	Part Number	Qty	S/P/F	Description
1	530001725	4	/P	Locknut - (12 - 24)
2	530022204	2		Chain Guard - Upper and Lower
3	530001709	4	/P	Screw-Guard Mtg. (12-24 x 5/8-Hex Hd.)
4	530625567	2		Screw- Spike Mtg. (1/4-20 x 1-3/4 - Hex Hd.)
5	1208	1		Bumper Spike - Right
6	1207	1		Bumper Spike - Left
7	530001615	2		Locknut - Bumper Spike Mounting (1/4-20)
8	530055044	1	/P	"S" Clip
9		1		Bow Guide (See "Bow Guide and Chain Information" illustration and parts list)
10		1		Chain (See "Bow Guide and Chain Information" illustration and parts list)
	0488	1		13" Reversible Bow Attachment - .050/ 3/8 pitch Use on Bow Guide Model; Part Change
	0489	1		14" Reversible Bow Attachment - .050/ 3/8 pitch Part Change
A	25384	1		Decal - Bow Guide Warning
	530025383	1		Decal - Handguard (Not Shown); Part Change
	530026156	1		Decal - Kickback (Not Shown); Part Change

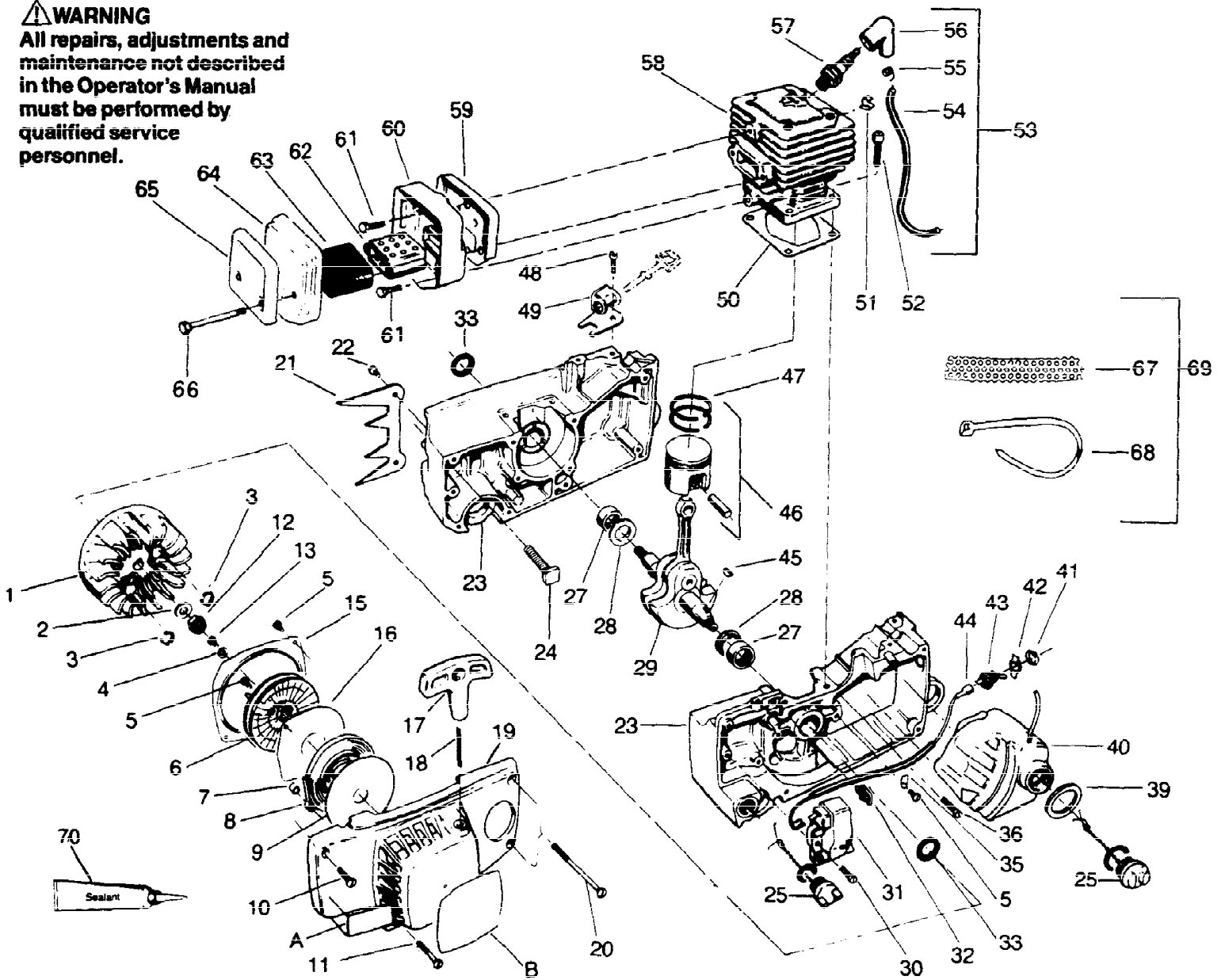


Ref #	Part Number	Qty	S/P/F	Description
1	530035115	1		Screw - Pump Cover
2	530035099	1		Cover - Fuel Pump
3	530035109	1		Gasket - Fuel Pump
4	530035113	1	S	Diaphragm - Fuel Included in Kit, Key No. 34
5	530035069	1		Screen - Inlet Included in Kit, Key No. 34
6	530035102	1		Valve - Throttle
7	530035015	3		Screw - Valve Included in Kit, Key No. 34
8	530035123	1		Fitting - Inlet (Elbow)
9	530035119	1		Spring - Throttle Ret.
10	530035101	1		Shaft Ass'y. - Throttle
11	530035111	1		Gasket - Circuit Included in Kit, Key No. 34
12	530035008	1	S	Valve - Inlet Needle Part Change;
13	530035118	1		Spring - Mtrg. Lever Included in Kit, Key No. 34
14	530035126	1		Plate Ass'y. - Circuit
15	530035116	2		Screw - Circuit Plate Included in Kit, Key No. 34
16	530035108	1	/P	Gasket - Mtrg. Diaphragm Included in Kit, Key No. 34
17	530035105	1	/P	Stop - Throttle
18	530035125	1		Bushing - Throttle Lv.
19	530035097	1		Lever - Throttle (Outer)
20	530035103	1		Shaft Ass'y. - Choke
21	530035121	1	/P	Spring - Idle Screw
22	530035117	1		Screw - Idle Adj.
23	530035122	2		Needle - Hi & Lo
24	530035023	2	/P	Spring-Needle Included in Kit, Key No. 34
25	530035104	1		Valve - Choke
26	530035107	1	/P	Ball - Choke Friction Included in Kit, Key No. 34
27	530035022	1	S	Spring - Choke Friction Included in Kit, Key No. 34
28	530035124	1	/P	Screen - Check Valve Included in Kit, Key No. 34
29	530035096	1	/P	Ring - Screen Retaining Included in Kit, Key No. 34
30	530035114	1		Diaph. Ass'y. - Mtrg. Included in Kit, Key No. 34
31	530035098	1		Cover - Mtrg. Diaphragm
32	530035021	4	/P	Screw Ass'y. - Mtrg. Cover Included in Kit, Key No. 34
33	530035112	1		Gasket Carb. Kit (Incl. #3 & 16) - Optional
34	530035127	1	/P	Kit - Carb. Kwik Repair (Incl. items indicated); Optional
	530035094	1	/P	Carburetor Assembly



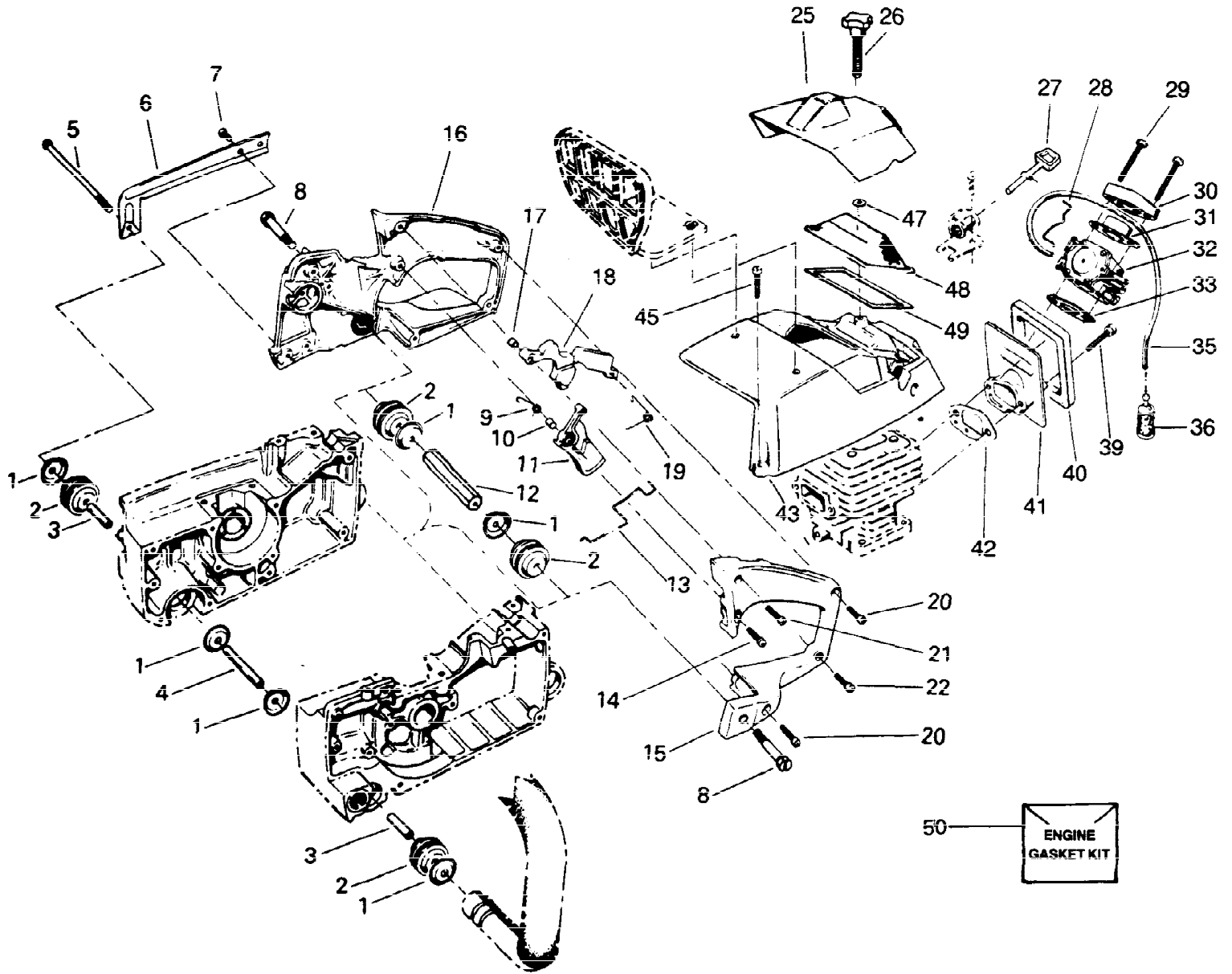
Ref #	Part Number	Qty	S/P/F	Description
1	530025911	1		Handle - Actuating Arm
2	530015545	2		Screw - Handle Part Change
3	530011625	1	S	Spider - Clutch Part Change
4	530015415	1		Screw - Adjusting
5	530025044	1		Nut - Bar Adjusting Part Change
6	530024419	1		"E" Ring
7	530015385	1		Screw - Bar Adjusting
8	530024901	1	/P	Guard
9	530015439	1		Retaining Ring
10	530015217	2	S	Nut - #10-24
11	530025914	1		Shield - Heat
12	530015406	2	/P	Screw - #10-24 x 1/2
13	530001543	2	S	Nut - #10-24 Part Change
A	530026372	1		Decal - Warning
B	530026341	1		Decal - Instruction (Heat Shield)
	530024768	1		Decal - Bar Clamp (Not Shown)
	69198	1		Chain Brake Assembly

⚠ WARNING
All repairs, adjustments and maintenance not described in the Operator's Manual must be performed by qualified service personnel.



Ref #	Part Number	Qty	S/P/F	Description
1	530039113	1		Flywheel Ass'y. (Incl. #3)
2	530001626	1	S	Washer - Flywheel
3	530023817	2	/P	Spring- Starter Dog
4	530015123	1	/P	Washer - Starter Pulley
5	530001726	6		Screw - 32 x 5/16- Hex Hd.-Disc Mounting (also Air Baffle & Clamp Head)
6	530010674	1	S	Pulley - Starter
7	530024329	1		Bushing Recoil Spring
8	530042051	1	S	Spring Starter Recoil
9	530042053	1		Disc. Recoil Spring - Outer
10	530015364	1		Screw - 10-24 x 1 Oval Hd. Fan Housing - (Top Front)
11	530015365	1		Screw - 10-24 x 1-3/8 Fan Housing (Lower Front)
12	530001722	1		Flywheel Nut - 3/8-24 Part Change
13	530015036	1	S	Screw - 10-24 x 1/8 - Starter pulley Part Change
15	530024232	1		Air Baffle
16	530042054	1	/P	Disc Recoil Spring - Inner
17	530042056	1	S/P	Handle Starter Rope
18	530042052	1	S	Rope Starter (Bulk 9128)
19	530012034	1	S/P	Fan Housing Assembly
20	530015366	2		Screw - 10-24 x 3-9/64 - Fan Housing (Rear)
21	530024476	1		Spur
22	530015434	2	/P	Screw - 10-24 x 9/16 - Hex Hd. - Spur
23	530010696	1	/P	Crankcase Ass'y. (Incl. #24, 27, 33 and Oil Cap Assy.; from "Handlebar Assembly" illustration and parts list includes #30, 36, 47 & one of 34)
24	530030039	2	/P	Kit-Bar Stud Replmnt. (5/16")
25	952010438	1	F	Oil & Fuel Cap Kit (Incl. "O" Rings); See Drawing Note.
27	530032051	2		Bearing - Crankshaft
28	530015354	2		Thrust Washer- Crankshaft
29	530024492	1	/P	Crankshaft Assy. (Incl. Connecting Rod and Bearing)
30	530015425	2		Screw - 10-24 x 7/8 - Module Mnt.
31	530039093	1	/P	Ignition Module (Incl. #44 & 53)
32	530024334	1		Clamp - High Tension Lead - Crankcase
33	530019097	2	F	Seal - Crankshaft
35	530023661	2	/P	Clamp- Module Lead
36	530015238	9		Screw - 10-24 x 11/16 - Fit. Hd. Crankcase
39	530019122	1	F	Seal- Fuel Tank Neck
40	530010286	1	/P	Fuel Tank Ass'y. (Incl. Fuel Cap and from "External Power Unit" illustration and parts list #36 & 38)
41	530023575	1	S/P	Nut - Switch Mounting
42	530024858	2	S	Plate - Ignition Switch
43	530023732	1	S	Switch - Toggle
44		1		Leadwire - Switch
	530039115	1		Serial #35474496
	530039099	1		Before Serial #35474495
45	530002595	1		Key - Flywheel

Ref #	Part Number	Qty	S/P/F	Description
46	530010355	1		Piston Assembly (Incl. Piston Pin & Rings)
47	530024756	2		Rings - Piston
48	530015368	1	S/P	Screw - 10-24 x 3/8-Fil. Hd. Choke Bracket
49	530010347	1	/P	Bracket & Bushing Assembly - Choke
50	530019129	1	/P/F	Cylinder Gasket Part Change
51	530015195	1		Clip - High Tension Lead Cylinder
52	530001624	4		Cylinder Screw- 1/4-20 x 1/8
53	530039102	1	S	High Tension Lead Assembly (Incl. #54, 56 & 56)
54	530039096	1		High Tension Lead
55	530039071	1	/P	Connector - Spark Plug
56	530039097	1		Boot- Spark Plug
57	530030073	1	S	Spark Plug
58	530012069	1	/P	Cylinder
59	530024388	1		Back Plate - Muffler
60	530024387	1		Muffler Body
61	530015374	2		Screw - 1/4-24 x 1/2 - Hex Hd Muffler Body to Cylinder
62	530024384	2		Diffuser - Muffler
63	530024385	1		Screen - Spark Arrestor
64	530024391	1		Muffler Cover
65	530024392	1		Shield Muffler
66	530015375	2		Screw - 1/4-20 x 2-1/2 - Hex Cap Muffler Cover
67	530011746	1		Screen - Winter (Optional)
68	530024675	6		Tie Strap (Optional)
69	530069079	1		Winter Kit (Incl. 67 & 68); Optional
70	530030054	1	/P	Sealant - Crankcase (Optional); Part Change
A	530024835	1		Decal - Professional User Bow Guide Powerhead only
B	530024756	1		Decal- Fan Housing
	530064181	1		Operator's Manual Not Shown
	530066051	1		Bow Guide Manual Not Shown
		1		Carton - Not Available Not Shown
	530019119	1		O-Ring For 7/8" oil cap
	530001949	1		O-Ring For 3/4" oil cap



Ref #	Part Number	Qty	S/P/F	Description
1	530024376	1		Cup Isolator See Drawing Note No. 3.
		6		New Style Rear Isolation System
		6		Old Style Rear Isolation System
2		4		Isolator - Powerhead Rear Handle
	530024373	1		Use on Guide Bar Powerhead
	530024528	1		Use on Bow Guide Powerhead
3	530015362	2		Spacer - Front Handlebar Isolator Mount
4	530015361	1		Spacer - Front Handlebar - Center - Isolator Mount
5	530015391	1	/P	Screw - 1/4-20 x 5-5/16 Part Change
6		1		Handle Brace See Drawing Note No. 4.
7		2		Screw - 1/4-20 x 3/4 Button Hd. See Drawing Note No. 3.
8	530015462	2		Shoulder Screw 1/4-20 - Isolator Mount
9	530025469	1		Spring - Trigger
10	530032059	1		Bushing - Trigger
11	530026013	1	/P	Throttle - Trigger
12	530025258	1		Spacer - Isolator (Center)
13	530024699	1	/P	Wire Throttle
14	530015369	1	/P	Shoulder Screw - 10-24 x 5/8 - Fil. Hd. - Throttle Trigger Part Change
15		1		Rear Handle Left See Drawing Note No. 3.
16		1		Rear Handle Right See Drawing Notes No. 3 & 4.
17	530032053	1		Bushing - Throttle Lock
18	530024357	1	/P	Throttle Lock
19	530024378	1		Spring - Throttle Lock
20	530015403	2		Screw - 10-24 x 13/16 - Fil. Hd.- Rear Handle Part Change
21	530015393	1		Screw - 8-32 x 13/16 - Fil. Hd. - Rear Handle Throttle Lock
22	530015608	1		Screw - 8-32 x 9/16 - Fil. Hd. - Rear Handle Lower Part Change
25	530025892	1	S	Cover - Carburetor
26	530024482	1		Knob - Carburetor Cover
27	530025919	1	/P	Choke Rod
28	530024383	1		Wire - Choke
29	530015245	2		Screw - 10-24 x 11/16 - Fil. Hd. Carburetor to Adaptor
30	530019104	1	F	Seal - Adaptor Shield
31	530024349	1		Bracket - Carburetor Seal
32	530035094	1	/P	Carburetor
33	530019099	1	F	Gasket - Carburetor to Adaptor
35	530021028	1		Fuel Line
36	530091878	1	/P	Fuel Pick-up Ass'y. Part Change
39	530015414	2		Screw - 10-24 x 13/16 - Hex Hd. Adaptor to Cylinder
40	530019107	1	F	Seal - Carburetor Adaptor
41	530024229	1		Carburetor Adaptor
42	530019101	1		Gasket - Adaptor to Cylinder
43	530025893	2	/P	Cylinder Shield Part Change

Ref #	Part Number	Qty	S/P/F	Description
45	530015168	3	S	Screw - 10-24 x 5/8 - Fil. Hd. Cylinder Shield to Crankcase
47	530024877	1		Retainer - Carb. Cover Knob
48	530024548	1		Air Filter
49	530019123	1	/P/F	Gasket - Air Filter Part Change
50	530069190	1		Kit - Engine Gasket Part Change; Optional

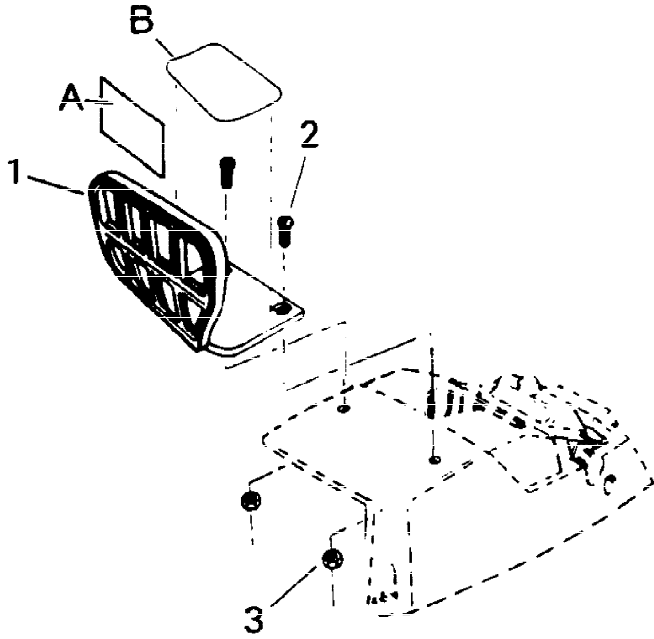
No
Diagram
Available

Parts List
Only

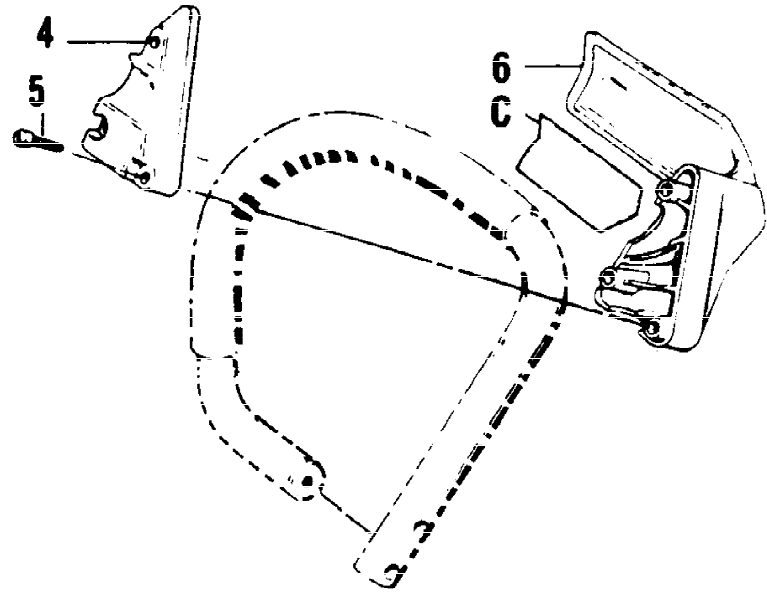
Ref #	Part Number	Qty	S/P/F	Description
	952044239	1		16" HT (Symmetrical) Optional
	51106	1		Reduced Kickback Chain Optional; Description & Drive Links - P72-60
	952051264	1	/P	Low-Kickback Chain Optional; Description & Drive Links - P72S-60; Part Change
	952044241	1	S	20" HT (Symmetrical) Optional
	952051108	1		Reduced Kickback Chain Optional; Description & Drive Links - P72-70
	952051266	1	/P	Low-Kickback Chain Optional; Description & Drive Links - P72S-70; Part Change
	530044233	1	/P	21" HT (Symmetrical) Optional; Part Change
	51095	1		Reduced Kickback Chain Optional; Description & Drive Links - P72-72
	952044242	1		24" HT (Symmetrical) Optional
	530051183	1		Reduced Kickback Chain Optional; Description & Drive Links - P72-81
	530044234	1		25" HT (Symmetrical) Optional; Part Change
	51091	1		Reduced Kickback Chain Optional; Description & Drive Links - P72-82
	530044097	1		16" S.N.R. (Symmetrical) Optional; Part Change
	51106	1		Reduced Kickback Chain Optional; Description & Drive Links - P72-60
	952051264	1	/P	Low-Kickback Chain Optional; Description & Drive Links - P72S-60; Part Change
	530044259	1		16" S.N.R. (Symmetrical) Optional
	51106	1		Reduced Kickback Chain Optional; Description & Drive Links - P72-60
	952051264	1	/P	Low-Kickback Chain Optional; Description & Drive Links - P72S-60; Part Change
	952044261	1	S	20" S.N.R. (Symmetrical) Optional
	952051108	1		Reduced Kickback Chain Optional; Description & Drive Links - P72-70
	952051266	1	/P	Low-Kickback Chain Optional; Description & Drive Links - P72S-70; Part Change
	530044066	1	S	24" S.N.R. (Silkscreen - Symmetrical) Optional; Part Change
	530051183	1		Reduced Kickback Chain Optional; Description & Drive Links - P72-81
	952044262	1	/P	24" S.N.R. (Silkscreen - Symmetrical) Optional
	530051183	1		Reduced Kickback Chain Optional; Description & Drive Links - P72-81
	530044076	1		27" S.N.R. (Silkscreen - Symmetrical) Optional; Part Change

Ref #	Part Number	Qty	S/P/F	Description
	51182	1		Reduced Kickback Chain Optional; Description & Drive Links - P72-90
	952044263	1		27" S.N.R. (Silkscreen - Symmetrical) Optional
	51182	1		Reduced Kickback Chain Optional; Description & Drive Links - P72-90
	44264	1		30" S.N.R. (Silkscreen - Symmetrical) Optional
	952051184	1	S	Reduced Kickback Chain Optional; Description & Drive Links - P72-97
	952044215	1		16" Control Tip(R) - S.N.R. Optional
	51106	1		Reduced Kickback Chain Optional; Description & Drive Links - P72-60
	952051264	1	/P	Low-Kickback Chain Optional; Description & Drive Links - P72S-60; Part Change
	952044217	1		20" Control Tip(R) - S.N.R. Optional
	952051108	1		Reduced Kickback Chain Optional; Description & Drive Links - P72-70
	952051266	1	/P	Low-Kickback Chain Optional; Description & Drive Links - P72S-70; Part Change
	952044218	1		24" Control Tip(R) - S.N.R. Optional
	530051183	1		Reduced Kickback Chain Optional; Description & Drive Links - P72-81

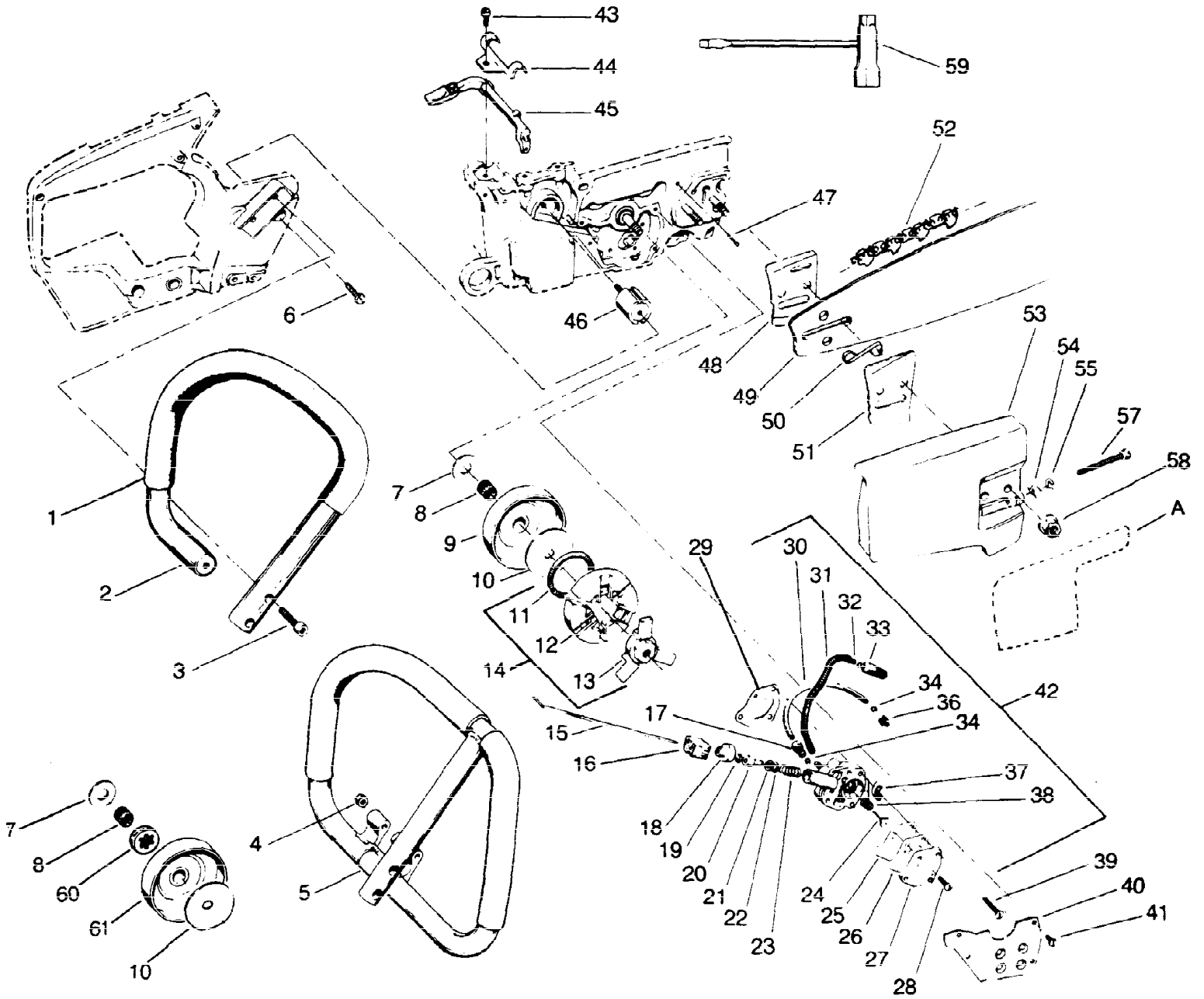
NEW STYLE HANDGUARD



OLD STYLE HANDGUARD

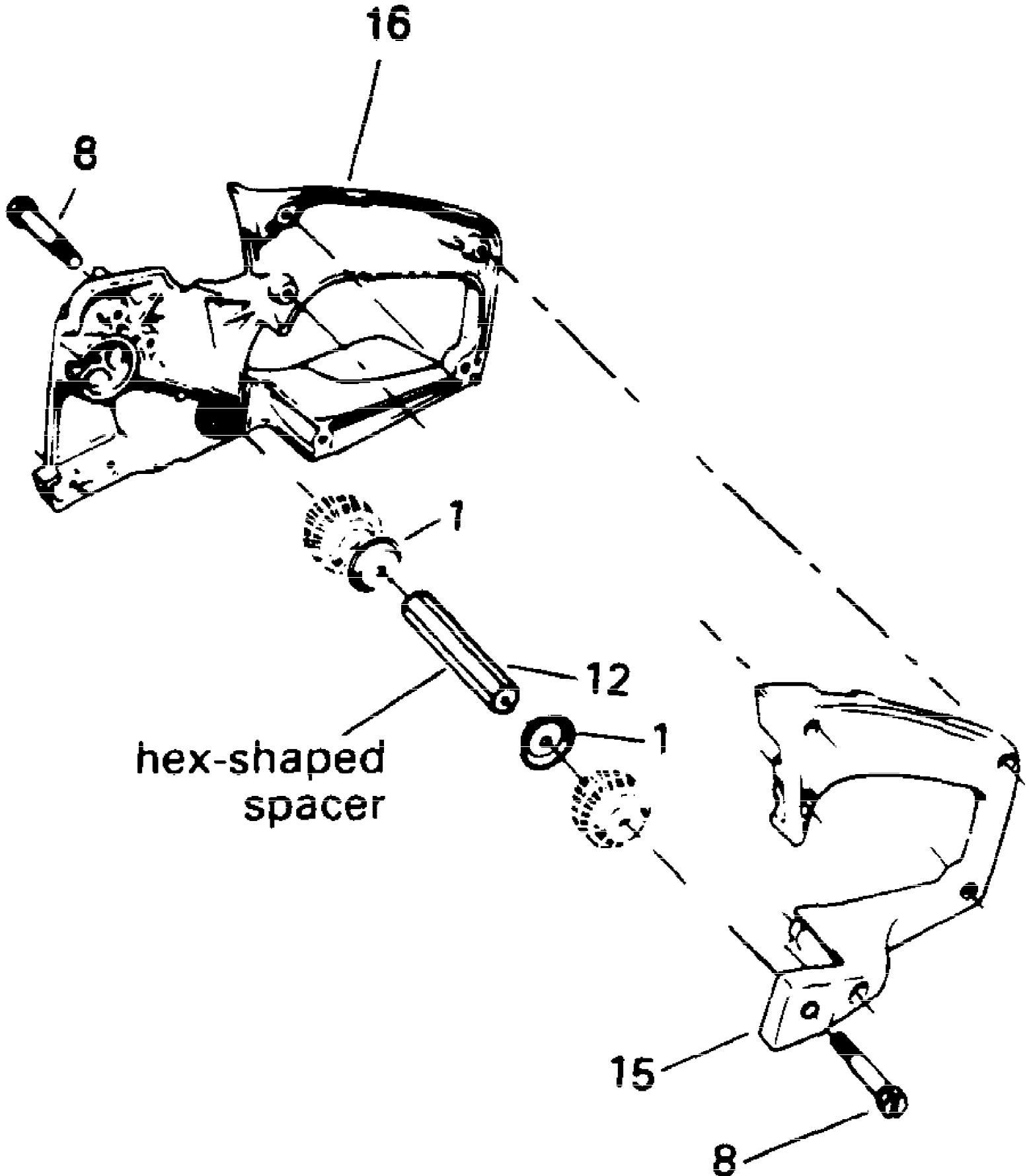


Ref #	Part Number	Qty	S/P/F	Description
1	530025948	1		Handguard
2	530015406	2	/P	Screw - 10-24 x 1/2
3	530001543	2	S	Nut - #10-24 Part Change
4	530024467	1		Cap - Handguard
5	530015509	3		Screw - #10 x 1 - Pan. Hd. - Handguard
6	530024466	1		Handguard
A		1		Decal - Kickback
	530026850	1		Guide Bar Powerhead Part Change
	530026156	1		Bow Guide Powerhead
B	530026341	1		Decal - Starting Instructions
C		1		Decal - Kickback Warning
	530025681	1		Guide Bar Powerhead
	530025383	1		Bow Guide Powerhead

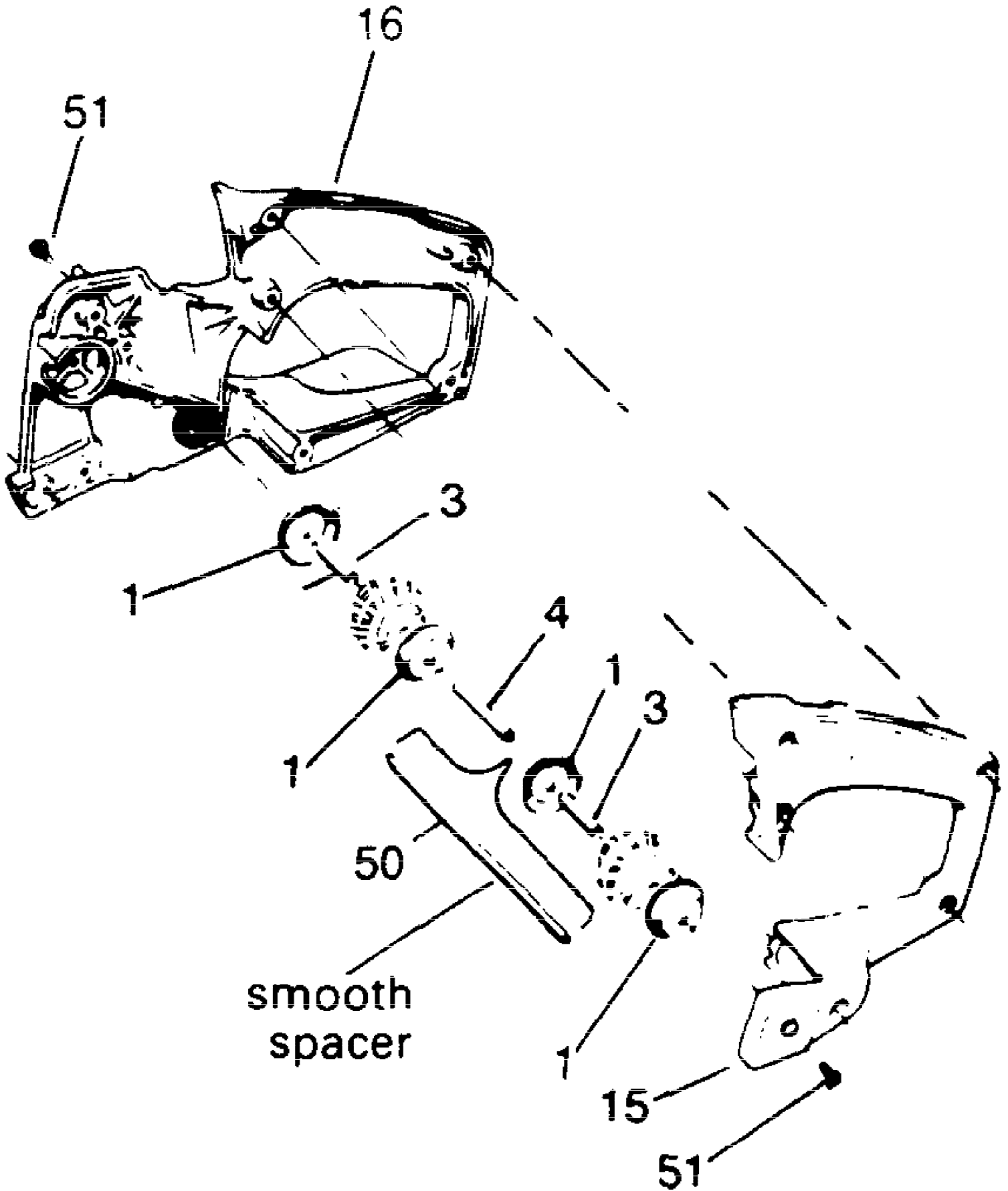


Ref #	Part Number	Qty	S/P/F	Description
1	530069171	1	/P	Kit - Grip - Handlebar (Velvet)
2	530022276	1	S	Handlebar Assembly For new Style Handguard See "Handguard" illustration and parts list
	530022196	1	S	For Old Style Handguard See "Handguard" illustration and parts list
3	530001711	2		Screw - 1/4-20 x 1 - Socket Hd. - Handlebar to Crankcase
4	530001615	1		Locknut - 1/4-20 - Wraparound Handle
5	530069163	1	/P	Handlebar - Wraparound Handle Optional for Guide Bar; Powerhead only
6	530015406	1	/P	Screw - 10-24 x 1/2 - Pan. Hd. - Side Isolator
7	530015357	1	/P	Thrust Washer
8	530032049	1	/P	Bearing - Clutch
9	48069	1		Drum & Sprocket Assembly
10	530024465	1		Plate Clutch
11	530024353	1		Spring - Clutch
12	530024352	3		Shoe - Clutch
13	530011625	1	S	Spider - Clutch
14	530010291	1	/P	Clutch Ass'y. (Incl. 11, 12 & 13)
15	530024347	1		Rod - Manual Oiler
16	530023373	1	/P	Boot - Oiler Rod Engine Gasket Kit Contents, Key No. 50, "External Power Unit".
17	530002615	1		Tubing Nut
18	530023356	1		Cap - Oil Pump
19	530001611	1		Retainer Ring
20	530023357	1		Plunger
21	530019029	1		"O" Ring - Quad Ring
22	530015418	1		Washer - Oiler
23	530023358	1		Spring
24	530022197	1		Ass'y. - Button & Pintle
25	530024345	1		Diaphragm
26	530019102	1		Gasket - Cover to Body Engine Gasket Kit Contents, Key No. 50, "External Power Unit".
27	530025987	1	/P	Cover - Pump
28	530015297	1		Screw - 8-16 x 5/8 Pan. Hd. - Oil Pump Cover
29	530019103	1		Gasket - Oiler Ass'y to Crankcase Engine Gasket Kit Contents, Key No. 50, "External Power Unit".
30	530021038	1		Discharge Line Oil (Bulk 8115)
31	24677	1		Spring-Oil Line Protector
32	530021031	1		Oil Line (Bulk 8132)
	530010289	1		Oil Line Pick-up Assembly (Incl. 30 & 31)
33	24676	1		Weight - Oil Pick-up Line
34	530002464	2		Sleeve - 1/8 Tubing
36	530015422	1		Tubing Nut - Slotted
37	24691	1		Foam - Oil Pump Vent
38	530023699	1		Spring - Diaphragm
39	530015401	3		Screw - 8-32 x 1 - Pan.Hd. - Pump to Crankcase
40	530024399	1		Cover Plate - Oiler
41	530015004	4	/P	Screw - 8-32 x 5/16 - Pan. Hd. - Cover Plate

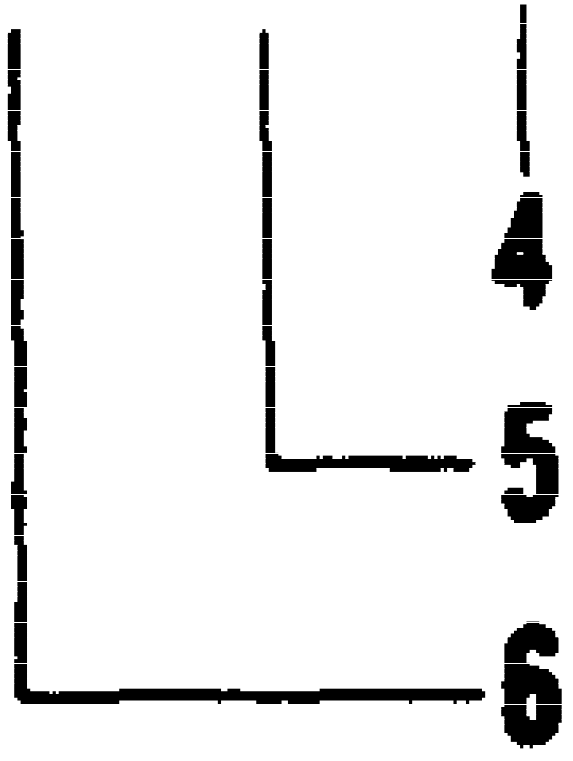
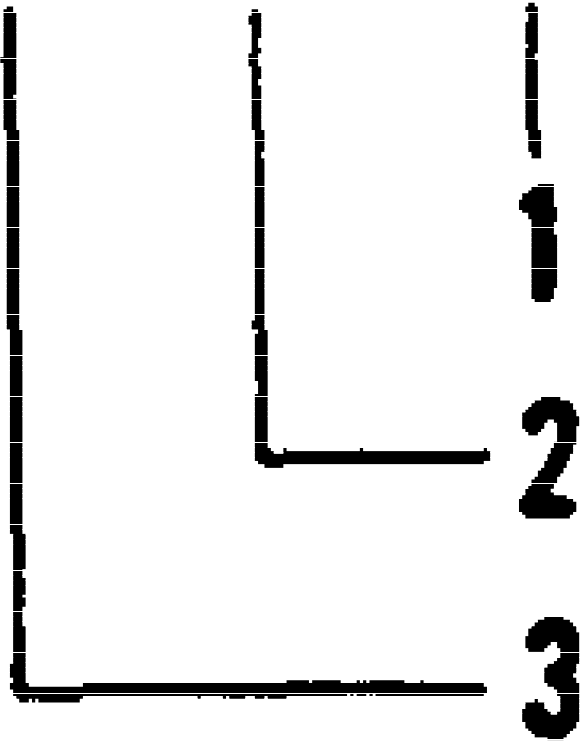
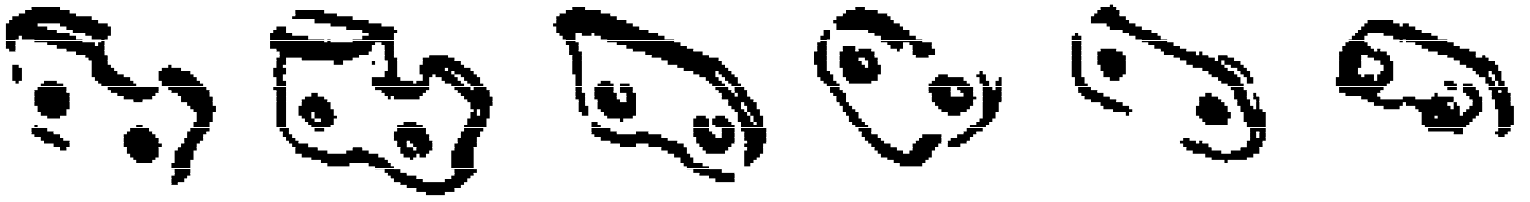
Ref #	Part Number	Qty	S/P/F	Description
42	530069062	1	/P	Kit - Oil Pump Ass'y. Part Change; (Incl. 17 - 28, 30 - 33, one of 34 & 36 - 38); See Drawing Note No. 2.
43	530015319	1		Screw - 10-24 x 3/8-Fil. Hd. - Bracket to Crankcase
44	530024351	1		Bracket Lever to Crankcase
45	530024348	1	/P	Lever - Manual Oiler
46		1		Isolator Side
	24225	1		Use on Guide Bar Powerhead
	530024637	1	S	Use on Bow Guide Powerhead
47	530069185	1	/P	Kit - Oil Vent Replacement Part Change
48	530025925	1	/P	Guide Bar Plate - Inner
49		1		Guide Bar and Bow Guide See "Bow Guide Assembly" and "Guide Bar Information" illustrations and parts lists.
50	530055044	1	/P	"S" Clip (See "Guide Bar Information" illustration and parts list.)
51	530025924	1	/P	Guide Bar Plate - Outer
52		1		Chain See "Guide Bar And Chain Information" for parts lists.
53		1		Bar Clamp Ass'y (Incl. 54 - 57)
	530011637	1	S	Use on Guide Bar Powerhead
	530011692	1		Use on Bar Guide Powerhead
54	530025044	1		Pin-Bar Adj.
55	530024419	1		"E" Ring Adj. Screw
57	530015385	1		Screw - 10-24 x 2-5/16" Bar Adj.
58	530015445	2	S/P	Flange Nut Mounting - 5/16-18
59	530031107	1	S	Scrench
60	530004746	1	S	Rim-Floating
61	48063	1		Ass'y Drum & Sprocket
A	530024759	1		Decal - Bar Clamp



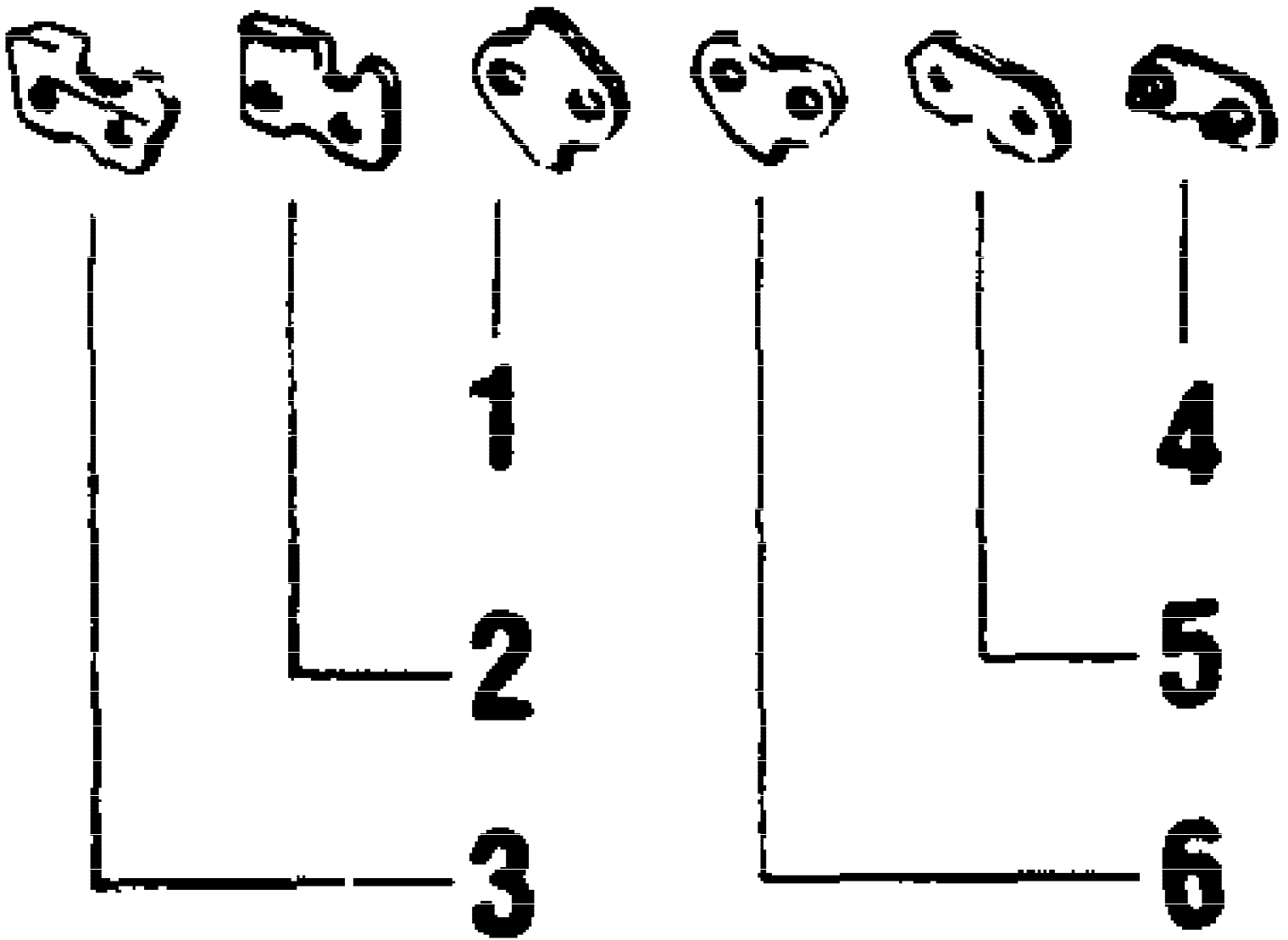
Ref #	Part Number	Qty	S/P/F	Description
1	530024376	2		Cup Isolator New Style
8	530015462	2		Shoulder Screw 1/4-20 x 3/4 New Style
12	530026258	1		Spacer - Center New Style
15	530011826	1		Rear Handle - Left New Style
16	530011827	1	/P	Rear Handle - Right New Style; See Drawing Note No. 4.
16	530012023	1	S	Rear Handle - Right New Style (1/4" holes)
?7	530015194	2		Screw - 1/4-20 x 3/4 Button Hd. New Style (1/4" holes)
?6		1		Handle Brace
	530011965	1	S	Handle Brace Use on Guide Bar Powerhead New Style (1/4" holes)
	530011964	1	/P	Handle Brace Use on Bow Guide Powerhead New Style (1/4" holes)



Ref #	Part Number	Qty	S/P/F	Description
1	530024376	4		Cup Isolator Old Style
3	530015362	2		Spacer Isolator Old Style
4	530015361	1		Spacer Isolator Old Style
15	530011642	1	S	Rear Handle - Left Old Style
16	530011643	1	S	Rear Handle - Right Old Style; See Drawing Note No. 4.
16	530011827	1	/P	Rear Handle - Right Old Style (#10 holes)
50	530024377	1		Pin - Rear Isolator Old Style
51	530015192	2	S	Screw - 10-24 x 3/8 Pan Head Old Style
?7	530015387	2		Screw - 10-24 x 9/16 Fil. Hd. Old Style (#10 holes)
?6		1		Handle Brace
	530011646	1	S	Handle Brace Use on Guide Bar Powerhead Old Style (#10 holes)
	530011645	1	S	Handle Brace Use on Bow Guide Powerhead Old Style (#10 holes)



Ref #	Part Number	Qty	S/P/F	Description
1	530052047	1		Guard Drive Link
2	530005294	1		L. H. Cutter
3	530005293	1		R. H. Cutter
4	530052014	1	/P	Pre-Set Tie Strap
5	530005295	1	/P	Tie Strap
6	530005297	1		Drive Link
?7	530005299	1	/P	Repair Kit Part Change
	530055044	1	/P	Bar Spacer ("S" Clip)
	530055033	1		Assembly Kit For Symmetrical S.N.R. Guide Bars
	530055059	1		Assembly Kit For Control Tip(R) S.N.R. Guide Bars



Ref #	Part Number	Qty	S/P/F	Description
1	530052083	1		Guard Drive Link
2	530052082	1		L. H. Cutter
3	530052081	1		R. H. Cutter
4	530052014	1	/P	Pre-Set Tie Strap
5	530005295	1	/P	Tie Strap
6	530005297	1		Drive Link
	530052078	1	/P	Chain Repair Kit