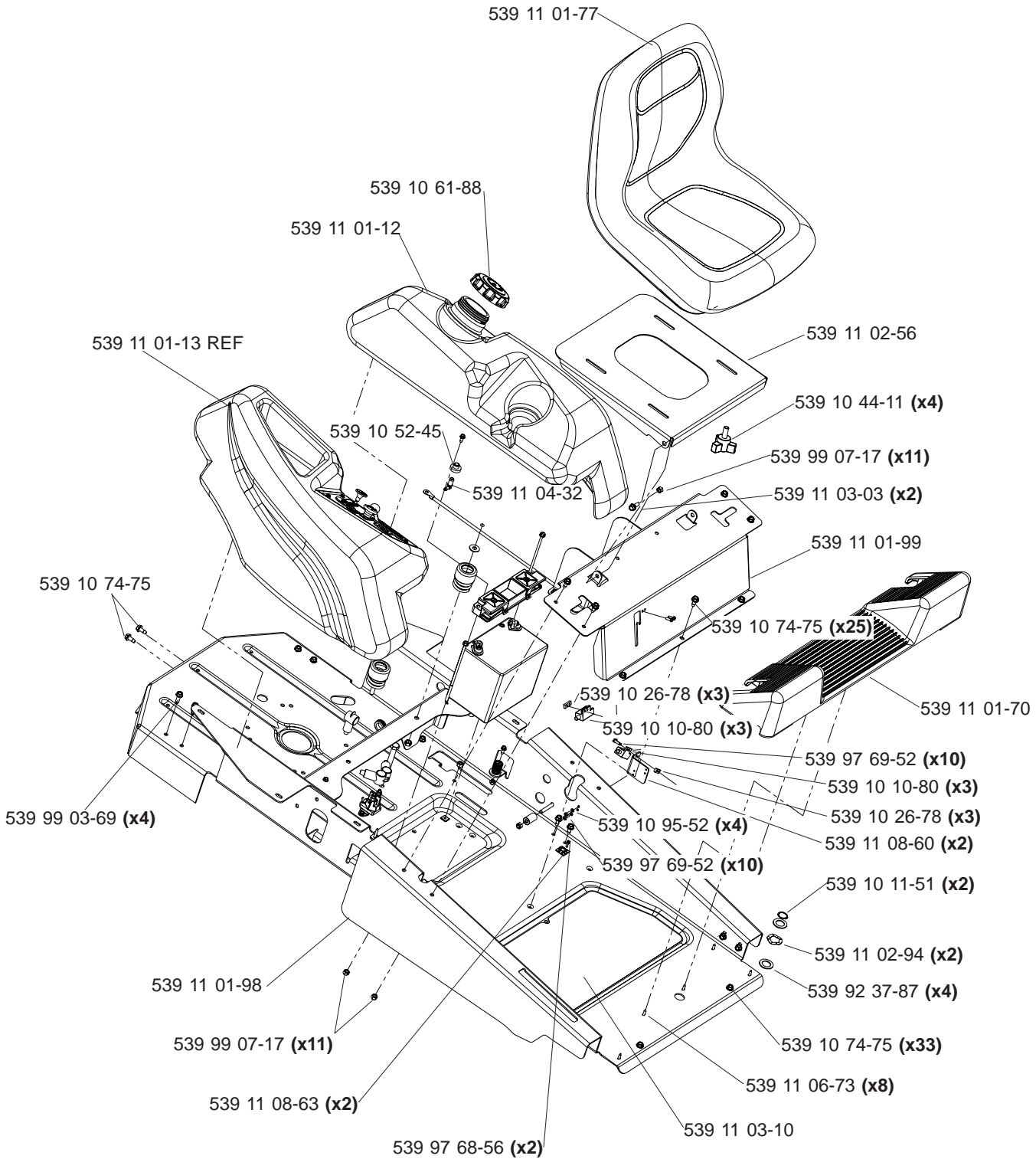


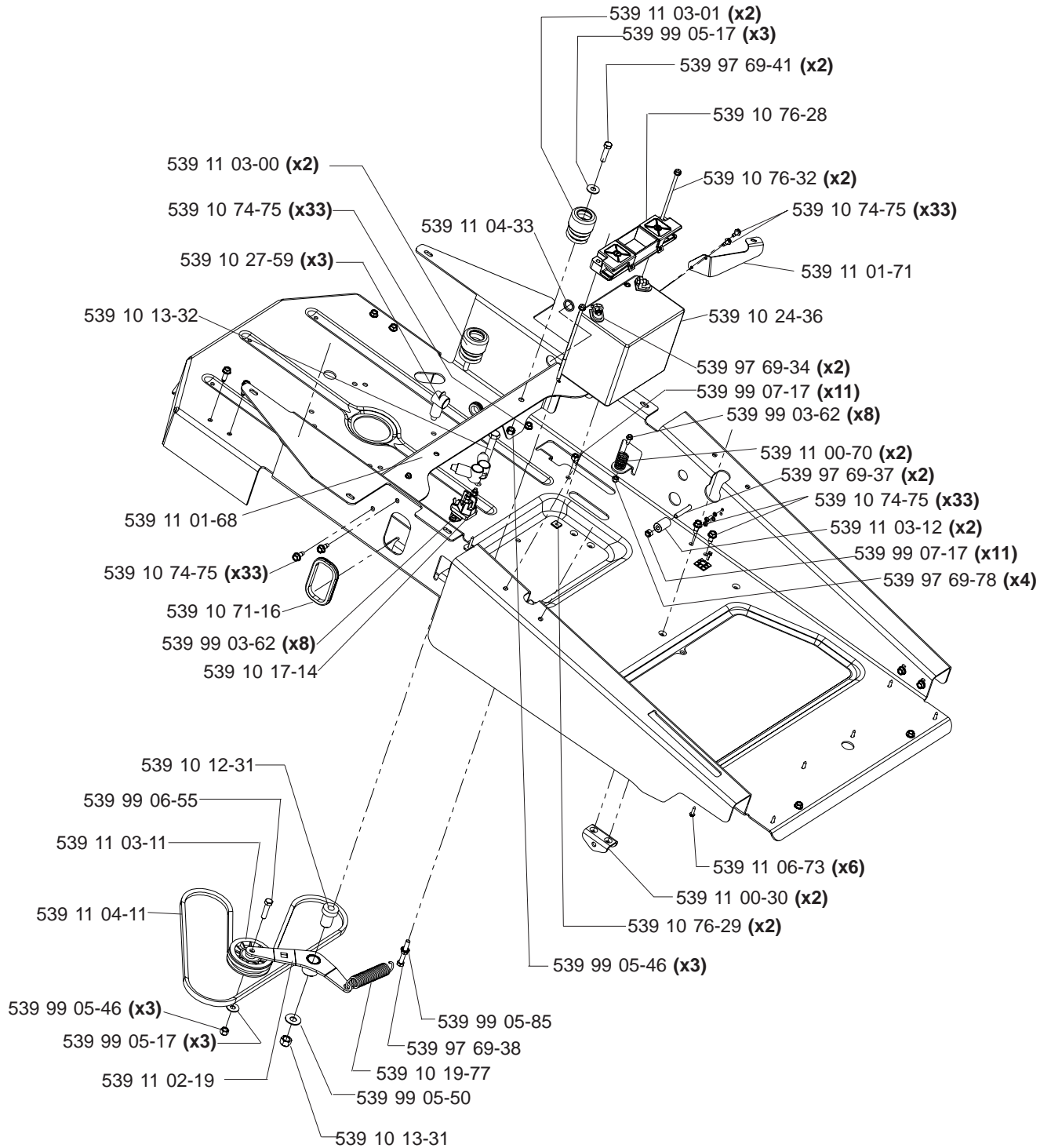
MAIN FRAME



NOT SHOWN:

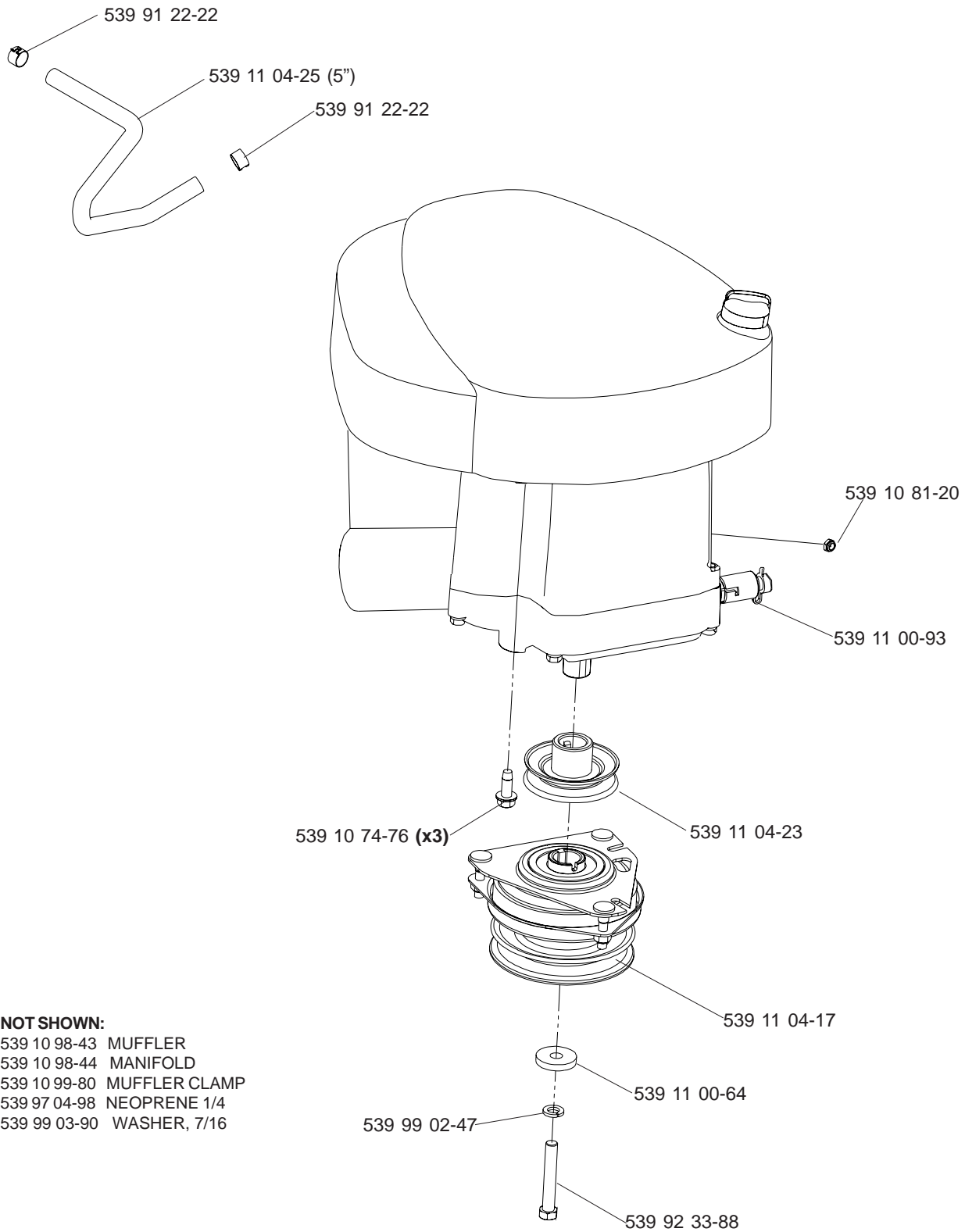
- 539 10 75-23 SEAT SWITCH
- 539 10 76-16 BATTERY CABLE, POSITIVE
- 539 11 00-68 BATTERY CABLE, NEGATIVE
- 539 11 03-09 WIRE HARNESS

MAIN FRAME

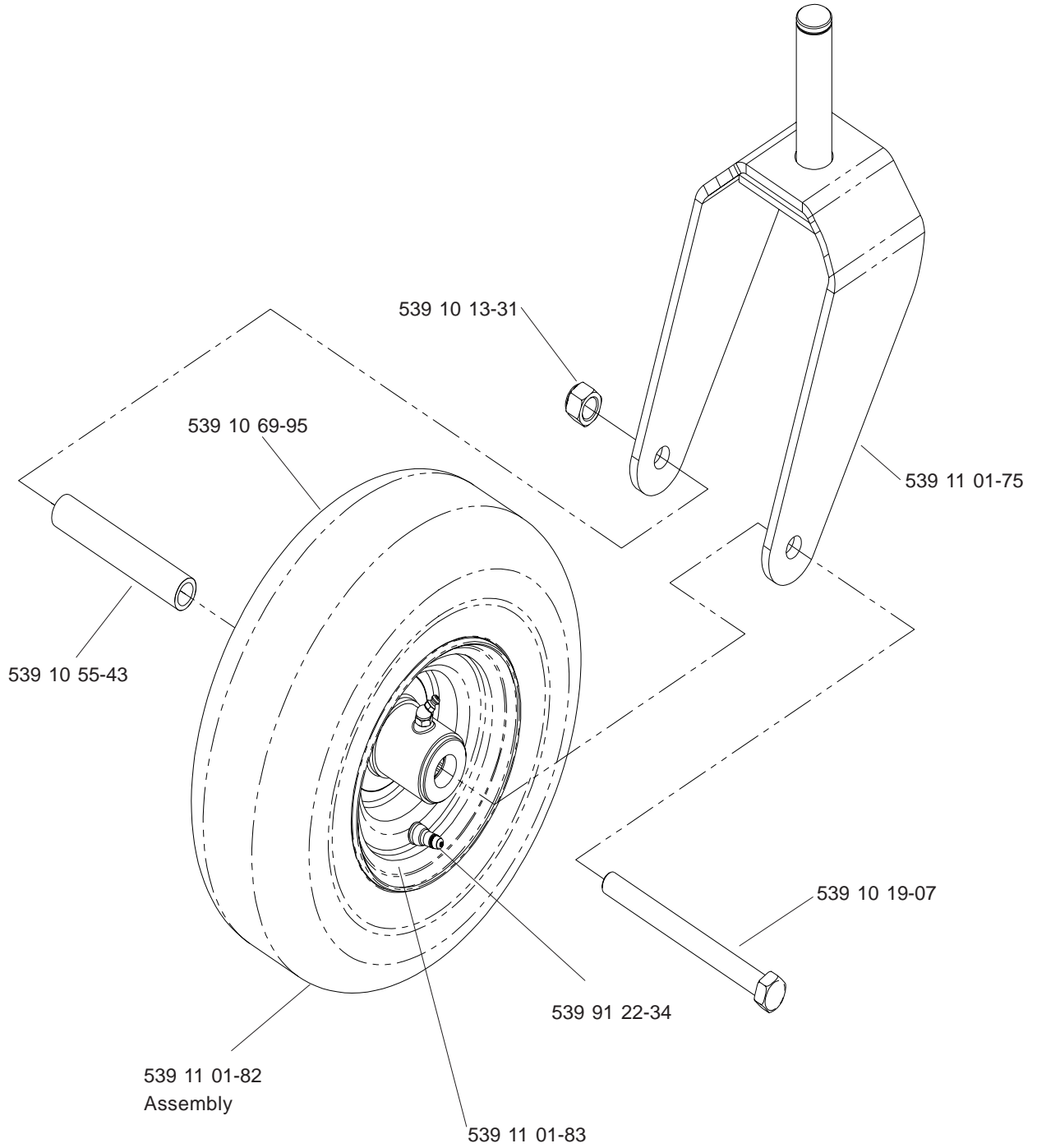


ENGINE ASSEMBLY (22 HP)

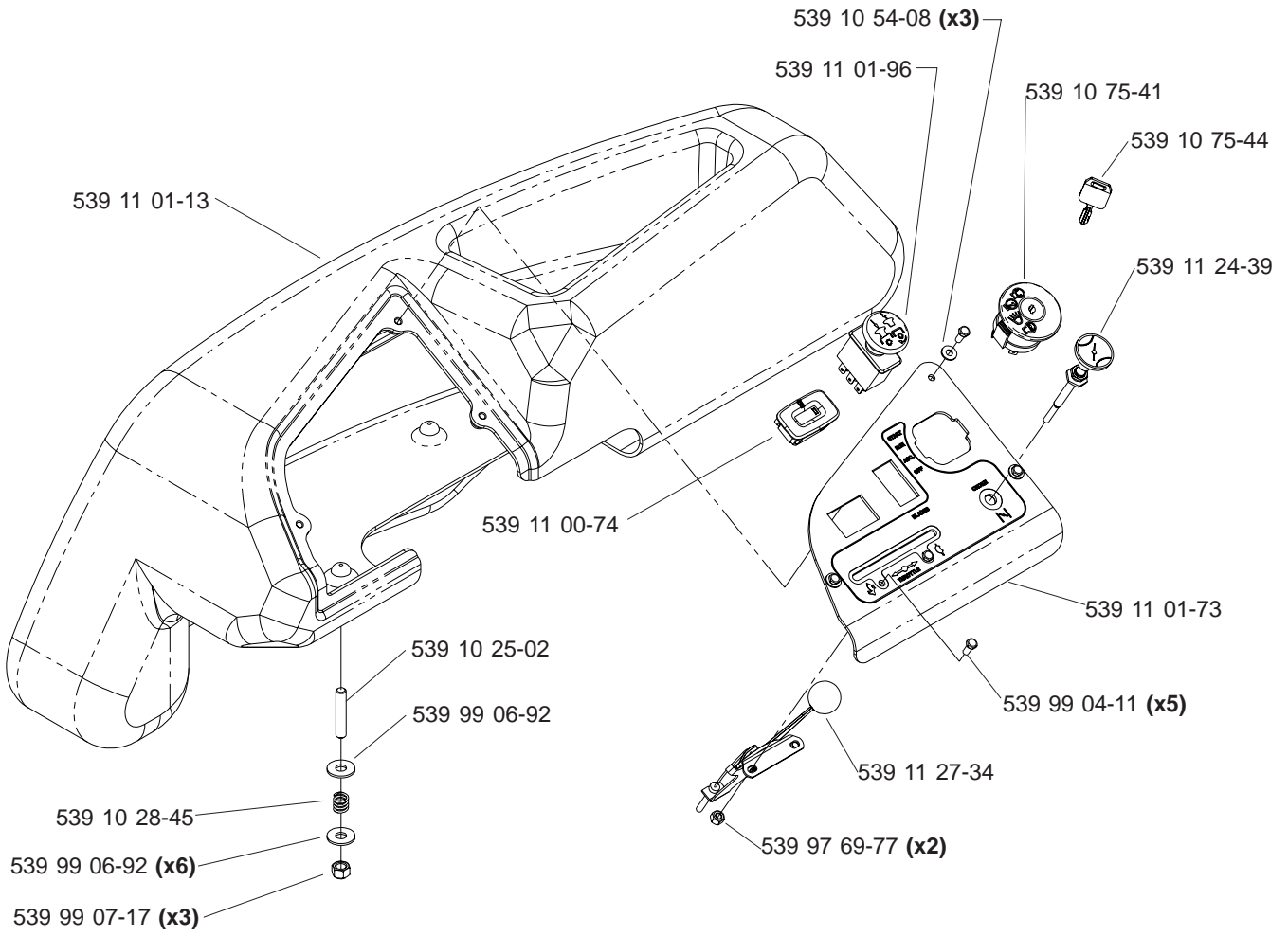
BRIGGS & STRATTON



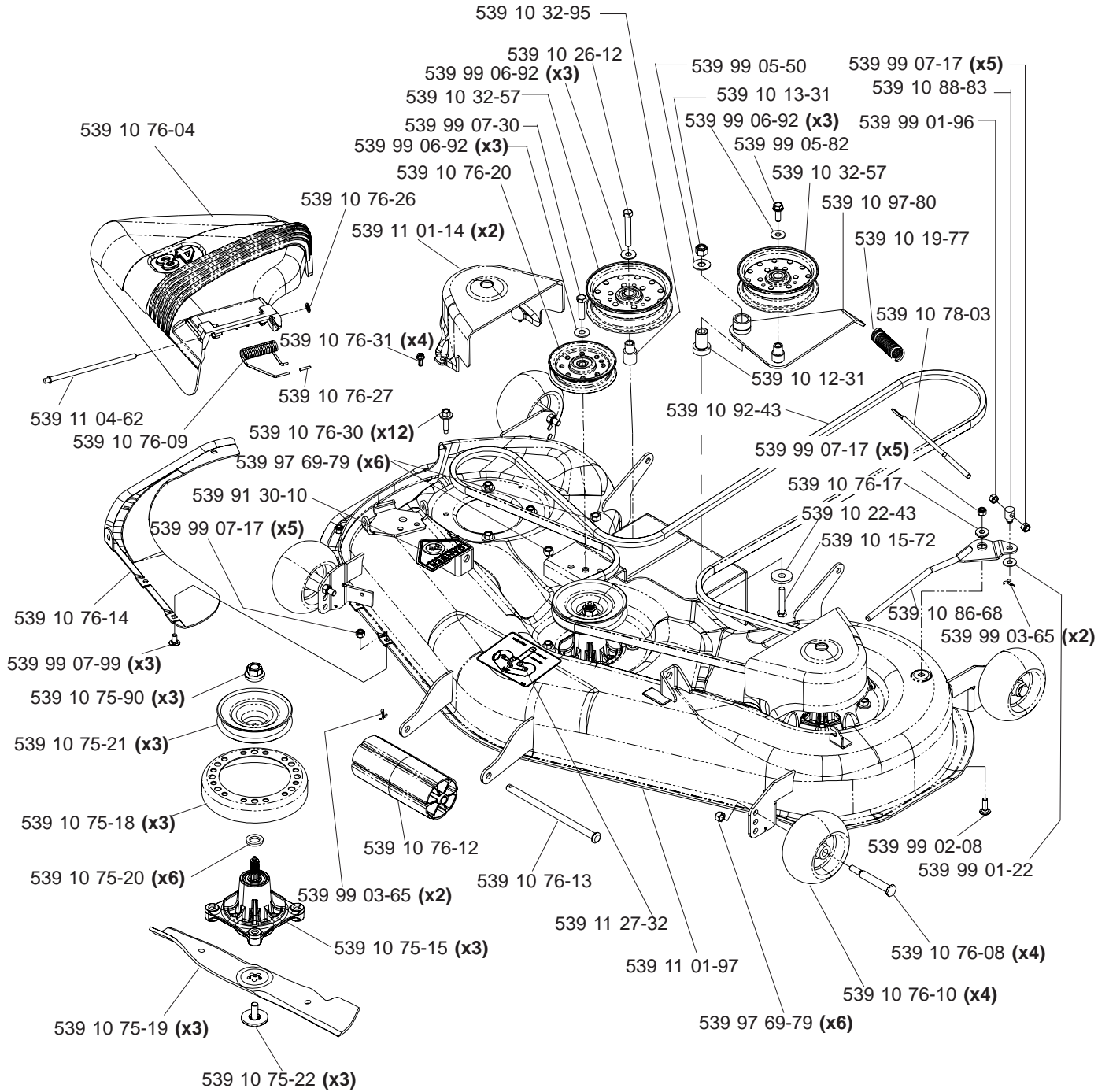
CASTER ASSEMBLY



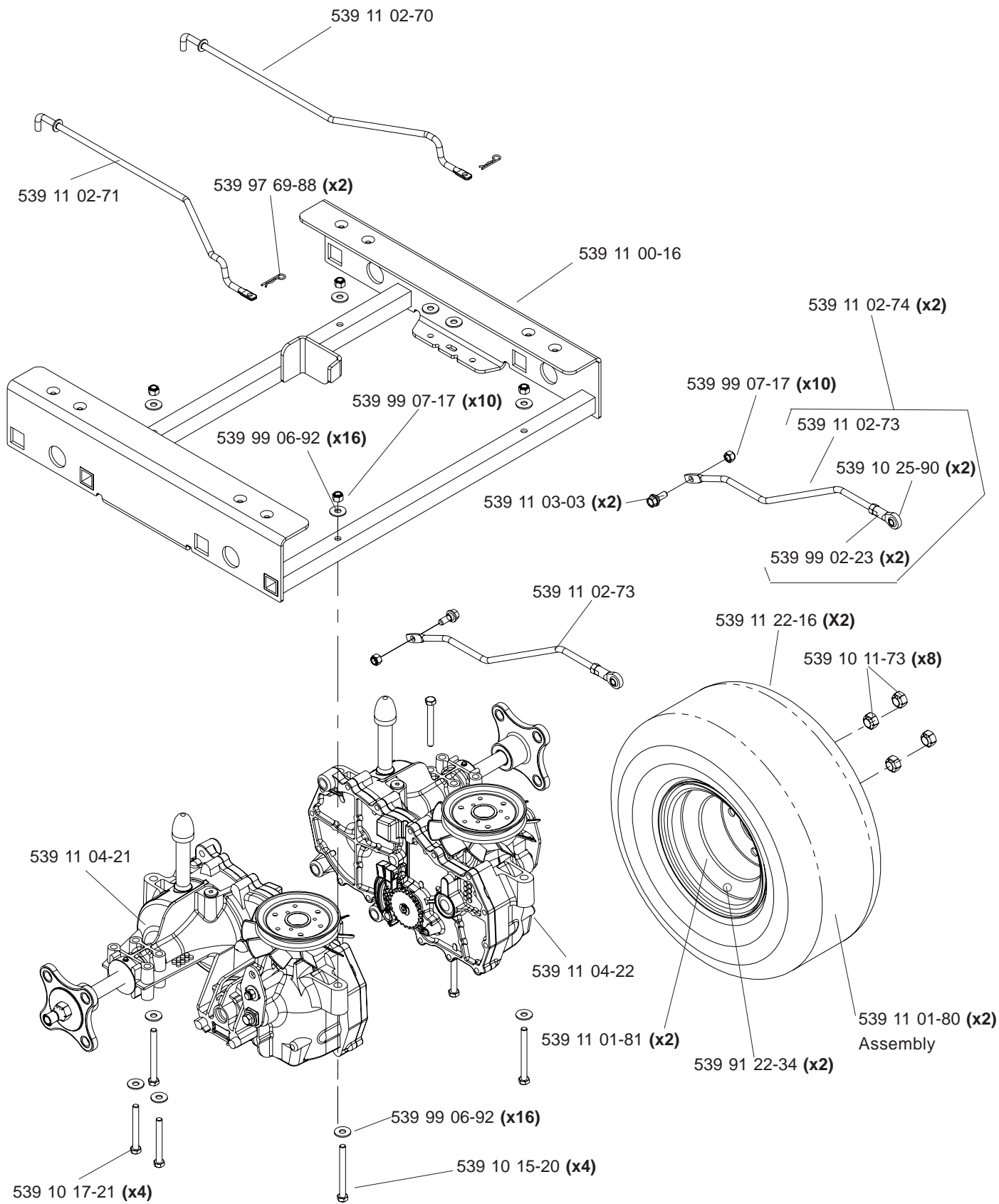
CONSOLE ASSEMBLY



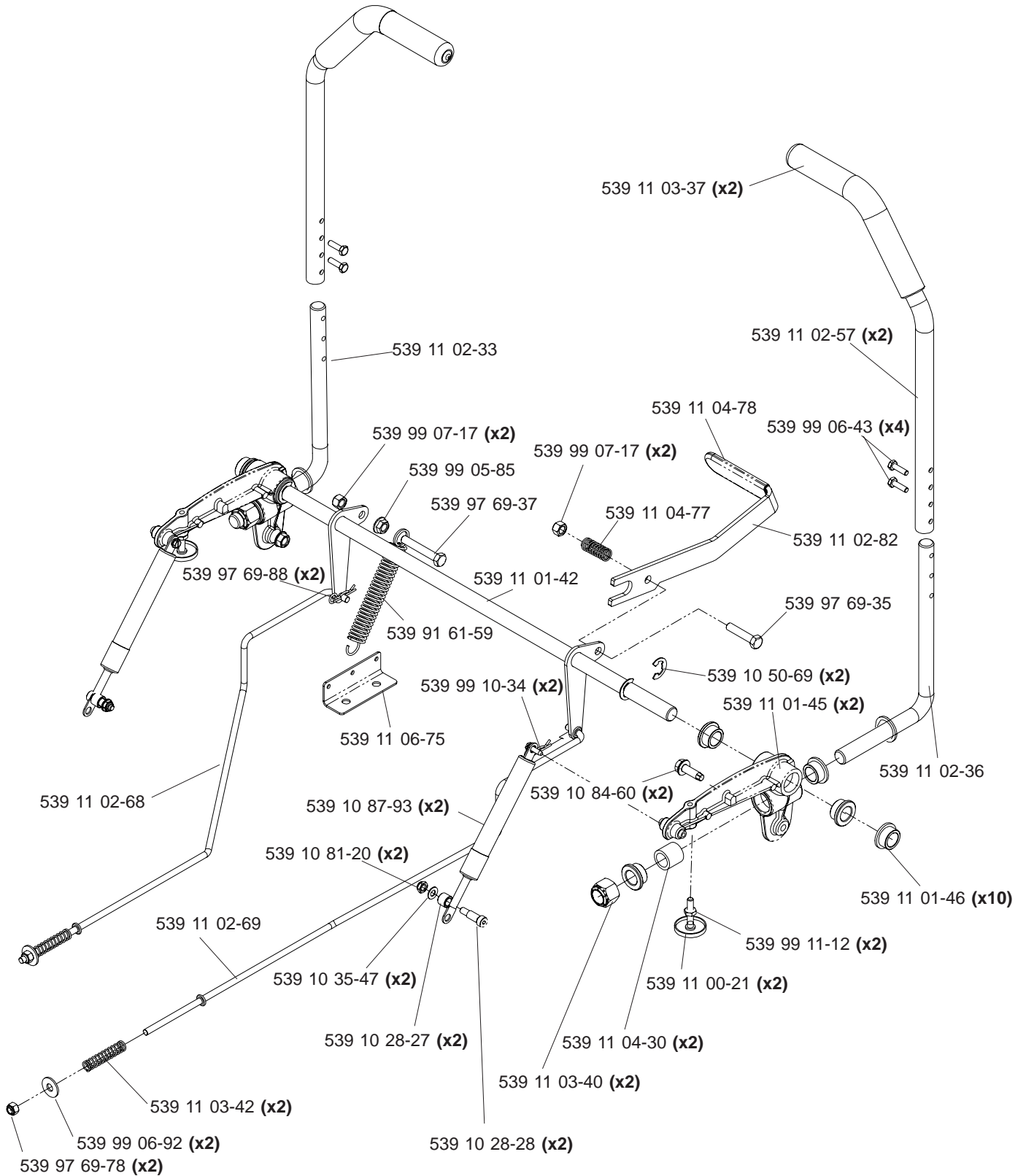
48" DECK ASSEMBLY



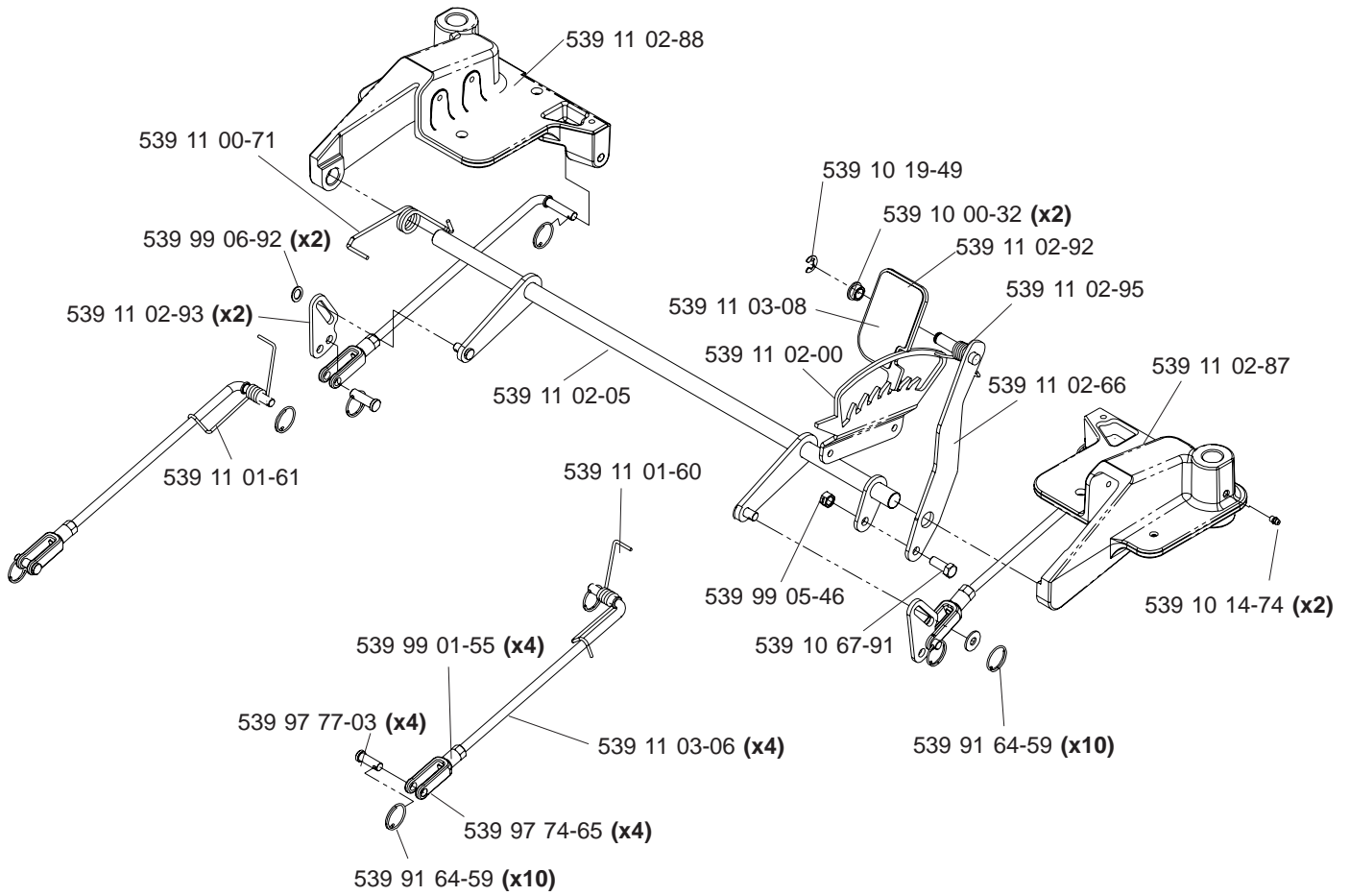
EZT



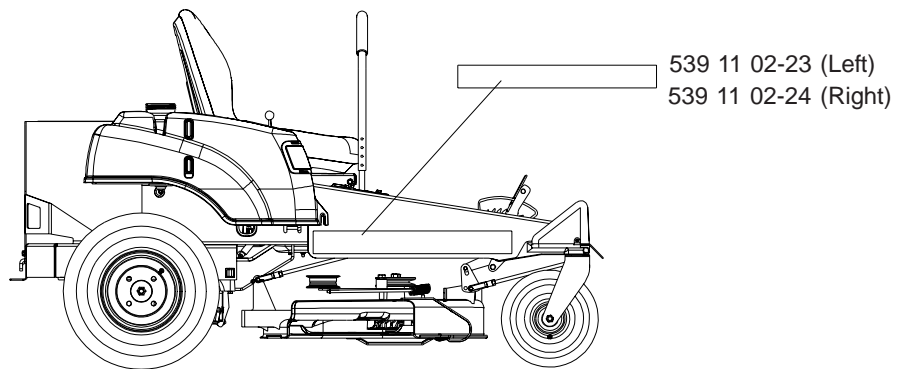
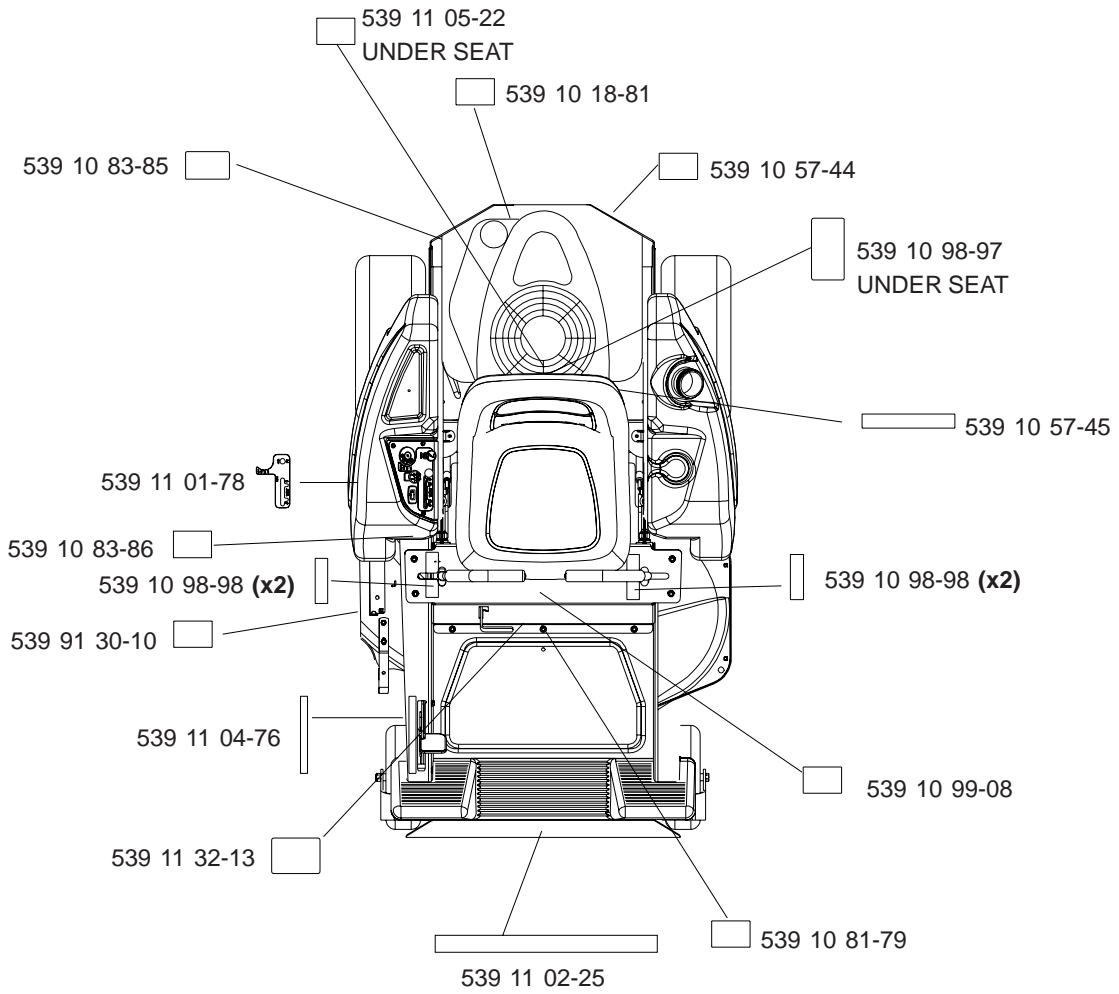
MOTION CONTROL



DECK LIFT



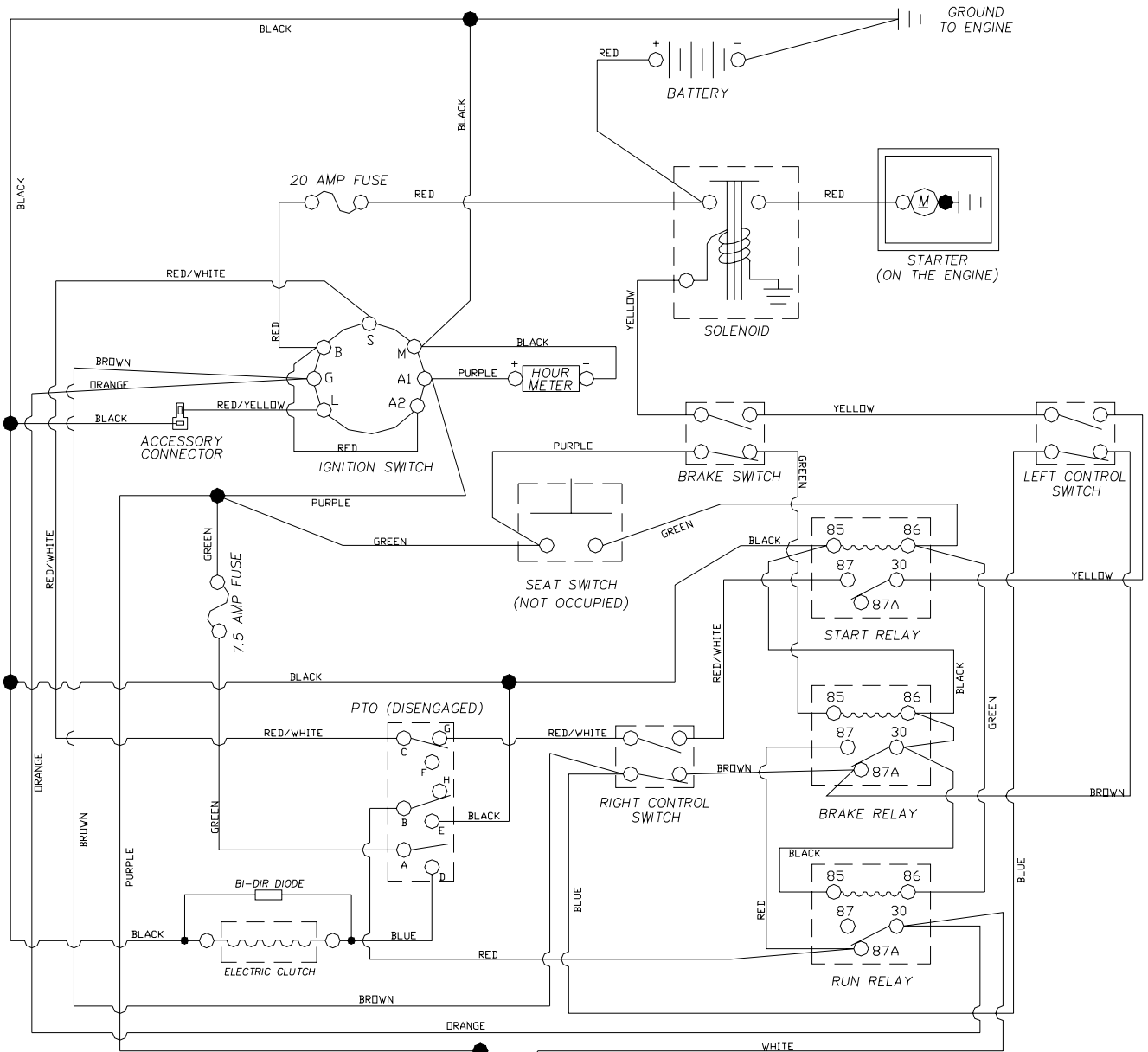
DECALS



ACCESSORIES

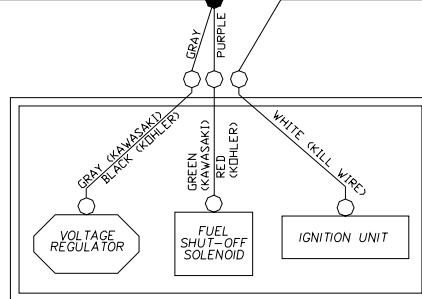
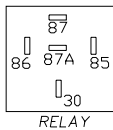
PART NO.	QTY.	DESCRIPTION
539 11 04-69.....	1	KIT, ARMREST

WIRING SCHEMATIC



PTO SWITCH

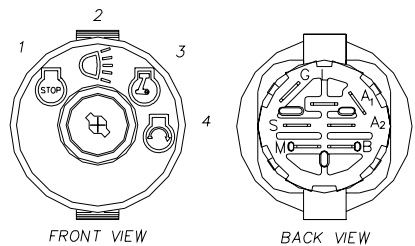
POSITION	CIRCUIT
OFF	C + G, B + H
ON	C + F, B + E, A + D



ENGINE
(REFER TO ENGINE MANUAL FOR MORE DETAIL)

NON-REMOVABLE CONNECTIONS

REMOVABLE CONNECTIONS



IGNITION SWITCH

POSITION	FUNCTION	CONTACT 1	CONTACT 2
1	OFF	M+G+A ₁	NONE
2	ON+ASS.	B+A ₁	L+A ₂
3	ON	B+A ₁	NONE
4	START	B+S+A ₁	NONE

Parts Descriptions

539 10 00-32	BUSHING, NYLON FLANGED
539 10 10-80	SWITCH N.C.
539 10 11-51	RETAINING RING
539 10 11-73	NUTS, LUG
539 10 12-31	IDLER SPINDLE
539 10 13-31	NUT, 1/2C, NYLOC
539 10 13-32	HCS, 1/2-13 X 2 3/4, GR5
539 10 14-74	ZERK
539 10 15-20	HCS, 5/16-18 X 3 1/4, GR5
539 10 15-72	HCS, 1/2C X 3
539 10 17-14	SOLENOID
539 10 17-21	HCS, 5/16-18 X 2 3/4, GR5
539 10 18-81	DECAL, PROP 65
539 10 19-07	HCS 1/2-13 X 5 1/2
539 10 19-49	E-RING, 1/2"
539 10 19-77	TRACTION SPRING
539 10 22-43	WASHER, SUPPORT
539 10 24-36	BATTERY 12V
539 10 25-02	TANK-STUD FUEL
539 10 25-90	BALL END, R.H.
539 10 26-12	HCS, 3/8C X 2 3/4
539 10 26-78	PLATE, SWITCH, THREAD FORM
539 10 27-59	INSULATOR
539 10 28-27	SPACER, PULLEY
539 10 28-28	BOLT, 5/16 X 5/8, SHOULDER
539 10 28-45	SPRING-FUEL TANK
539 10 32-57	IDLER PULLEY
539 10 32-95	IDLER BUSHING
539 10 35-47	WASHER, 1/4
539 10 44-11	KNOB W/STUD
539 10 50-69	E-RING, 5/8
539 10 52-45	GROMMET, RUBBER
539 10 54-08	WASHER #10 FLAT Zd
539 10 55-43	SPACER
539 10 57-44	DECAL, EURO DANGER BELT
539 10 57-45	DECAL, EURO BATTERY WARNING
539 10 61-88	FUEL CAP
539 10 67-91	HCS 3/8-16 X 1, GR8
539 10 69-95	TIRE
539 10 71-16	GROMMET
539 10 74-75	BOLT, 5/16-18 X 3/4, THREAD FORMING
539 10 74-76	BOLT, 3/8-16 X 1, THREAD FORMING
539 10 75-15	CUTTER HOUSING ASM, INCLUDES: BALL BEARINGS, MANDREL ASM, SHAFT ASSM W/LOWER BEARING
539 10 75-18	STRIPPER, ROUND, UNIVERSAL
539 10 75-19	BLADE, HIGH LIFT
539 10 75-20	WASHER-SPACER
539 10 75-21	PULLEY