

### LIMITED WARRANTY

The Manufacturer warrants to the original consumer purchaser that this product as manufactured is free from defects in materials and workmanship. For a period of two (2) years from date of purchase by the original consumer purchaser, we will repair or replace, at our option, without charge for parts or labor incurred in replacing parts, any part which we find to be defective due to materials or workmanship. This Warranty is subject to the following limitations and exclusions.

1. This warranty does not apply to the engine, transaxle/transmission components, battery (except as noted below) or components parts thereof. Please refer to the applicable manufacturer's warranty on these items.
2. Transportation charges for the movement of any power equipment unit or attachment are the responsibility of the purchaser. Transportation charges for any parts submitted for replacement under this warranty must be paid by the purchaser unless such return is requested by the manufacturer.
3. Battery Warranty: On products equipped with a Battery, we will replace, without charge to you, any battery which we find to be defective in manufacture, during the first ninety (90) days of ownership. After ninety (90) days, we will exchange the Battery, charging you 1/12 of the price of a new Battery for each full month from the date of the original sale. Battery must be maintained in accordance with the instructions furnished.
4. The Warranty period for any products used for rental or commercial purposes is limited to 45 days from the date of original purchase.
5. This Warranty applies only to products which have been properly assembled, adjusted, operated, and maintained in accordance with the instructions furnished. This Warranty does not apply to any product which has been subjected to alteration, misuse, abuse, improper assembly or installation, delivery damage, or to normal wear of the product.
6. Exclusions: Excluded from this Warranty are belts, blades, blade adapters, normal wear, normal adjustments, standard hardware and normal maintenance.
7. In the event you have a claim under this Warranty, you must return the product to an authorized service dealer.

Should you have any unanswered questions concerning this Warranty, contact:

HOP  
Customer Service Department  
9335 Harris Corners Parkway  
Charlotte, NC 28269 USA

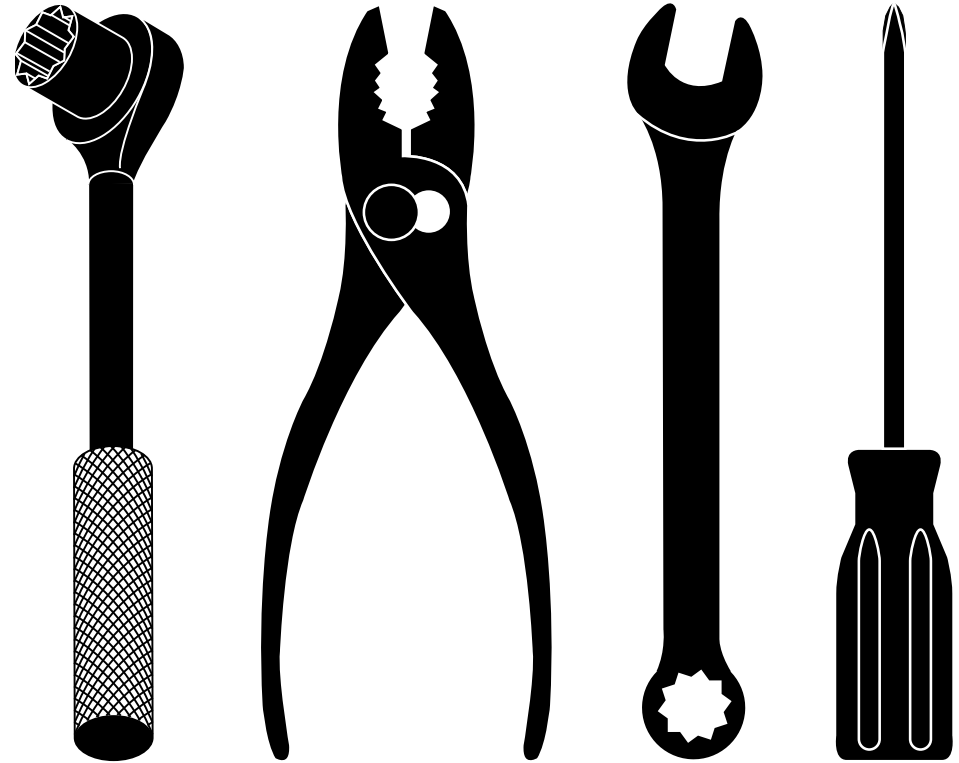
In Canada contact:  
HOP  
Customer Service Department  
5855 Terry Fox Way  
Mississauga, Ontario L5V 3E4

giving the model number, serial number and date of purchase of your product and the name and address of the authorized dealer from whom it was purchased.

**THIS WARRANTY DOES NOT APPLY TO INCIDENTAL OR CONSEQUENTIAL DAMAGES AND ANY IMPLIED WARRANTIES ARE LIMITED TO THE SAME TIME PERIODS STATED HEREIN FOR OUR EXPRESSED WARRANTIES.**

Some areas do not allow the limitation of consequential damages or limitations of how long an implied Warranty may last, so the above limitations or exclusions may not apply to you. This Warranty gives you specific legal rights, and you may have other rights which vary from locale to locale.

This is a limited Warranty within the meaning of that term as defined in the Magnuson-Moss Act of 1975.



# REPAIR PARTS MANUAL

## MODEL NO. 30534378

## MFG. I.D. NO. 96138003001

### Rotary Lawn Mower

For Parts and Service or Technical Assistance, call 1-800-487-5951

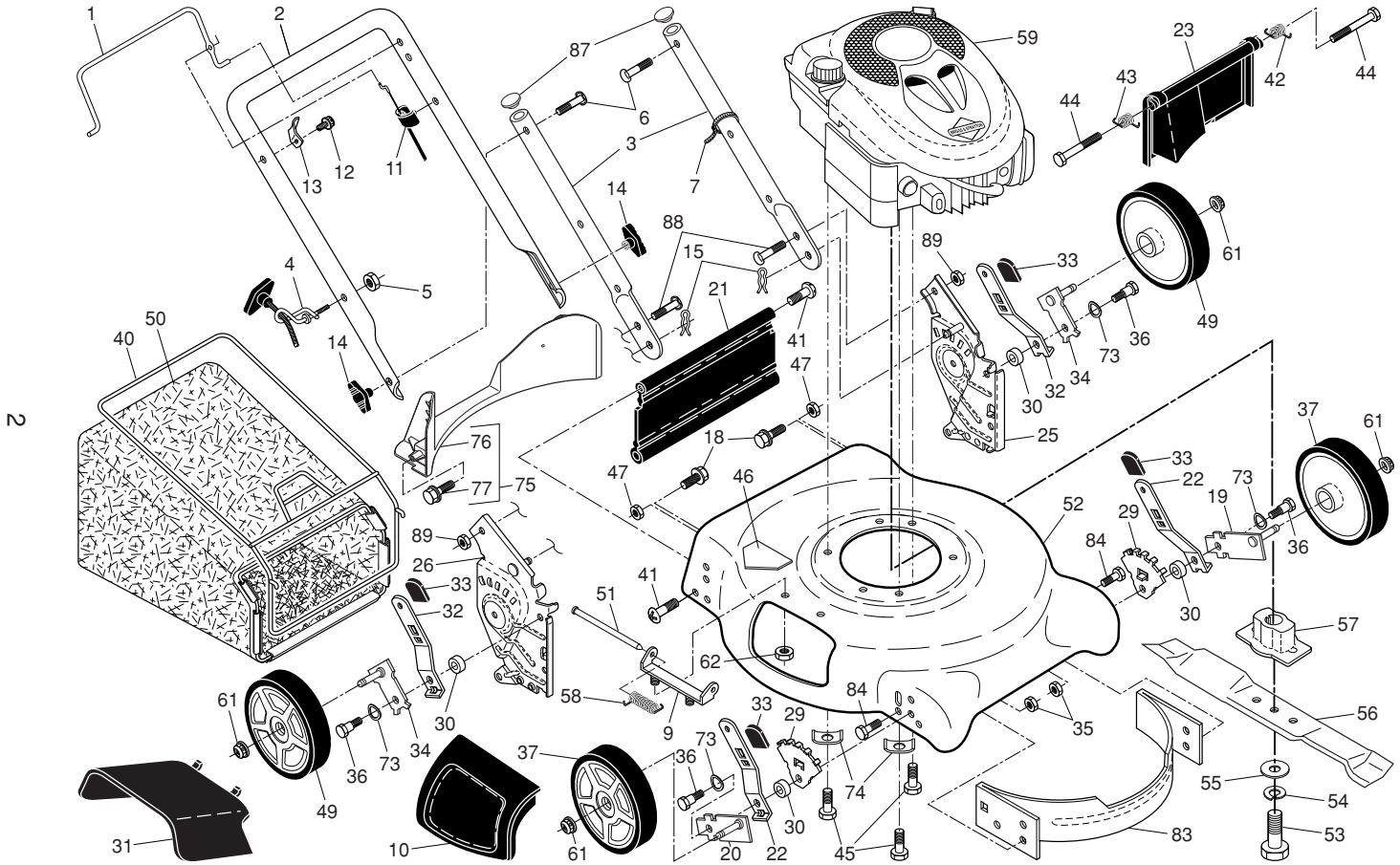


**NOTE:** Gasoline containing up to 10% ethanol (E10) is acceptable for use in this machine. The use of any gasoline exceeding 10% ethanol (E10) will void the product warranty.

583864127 01.24.13 BY

Printed in U.S.A.

# BRUTE ROTARY LAWN MOWER - MODEL NUMBER 30534378 (MFG ID. NO. 96138003001)



# BRUTE ROTARY LAWN MOWER - MODEL NUMBER 30534378 (MFG ID. NO. 96138003001)

KEY NO.	PART NO.	DESCRIPTION	KEY NO.	PART NO.	DESCRIPTION	KEY NO.	PART NO.	DESCRIPTION
1	194176X428	Control Bar	31	165760	Discharge Deflector	56	406712	21" Blade
2	447814X479	Upper Handle	32	401623X004	Selector Spring, Rear	57	418373	Blade Adapter
3	580638602	Bar, Lower Handle	33	87877	Selector Knob	58	152124	Hinge Spring
4	194788	Rope Guide	34	401173X004	Axle Arm Assembly, Rear, LH	59	---	Engine, Briggs & Stratton, Model No. 126M02-0131-F1 (For engine service and replacement parts, call B&S at 1-800-233-3723)
5	132004	Nut, Hex	35	426589	Locknut, Hex	61	409148	Locknut, Hex, Flanged
6	191574	Handle Bolt	36	401638	Shoulder Bolt	62	73800400	Locknut, Hex 1/4-20
7	66426	Wire Tie	37	193905X428	Wheel & Tire Assembly	73	401630	Washer, Curved, Cylindrical
9	154132	Hinge Bracket	40	411949	Frame, Grassbag	74	851201X004	Washer, Special, Engine
10	165754	Mulcher Door	41	194186	Hinge Screw	75	413693	Kit, Rear Baffle (Includes 3 Screws)
11	440934	Engine Zone Control Cable	42	405421	Spring, Rear Door, LH	76	410589	Baffle, Rear
12	178848	Hex Washer Head Screw	43	405423	Spring, Rear Door, RH	77	17411312	Screw, Rear Baffle
13	429930X004	Up-Stop Bracket	44	184193	Bolt, Rear Door	83	428501	Baffle, Front
14	189713X428	Handle Knob	45	150406	Screw, Hex Head, Threaded, Rolled 3/8-16 x 1	84	17000510	Screw, Front Baffle
15	51793	Hairpin Cotter	46	404763	Danger Decal	87	437516	Plug, Handle Bar
18	17600406	Screw 1/4-20 x 3/8	47	73930500	Locknut, Hex 5/16-18	88	72250505	Bolt, Hex Head
19	401174X004	Axle Arm Assembly, Front, LH	50	<b>581002110</b>	Grassbag	89	73970500	Nut, Hex
20	401175X004	Axle Arm Assembly, Front, RH	51	147286	Hinge Rod	--	404764	Warning Decal (not shown)
21	<b>418655</b>	Kit, Rear Skirt	52	441963	Kit, Lawn Mower Housing (Includes Key Number 46)	--	193732	Operator's Manual, English
22	401621X004	Selector Spring, Front	53	851084	Screw, Hex Head, Grade 8 3/8-24 x 1-3/8	--	193734	Operator's Manual, French
23	401814X428	Rear Door Assembly	54	850263	Helical Lockwasher	--	193735	Operator's Manual, Spanish
25	581714502	Handle Bracket Assy., LH	55	851074	Hardened Washer	--	<b>583864127</b>	Repair Parts Manual
26	581714602	Handle Bracket Assy., RH						
29	407494X005	Wheel Adjusting Bracket						
30	401629	Spacer						

**NOTE:** All component dimensions given in U.S. inches. 1 inch = 25.4 mm.

**IMPORTANT:** Use only Original Equipment Manufacturer (O.E.M.) replacement parts. Failure to do so could be hazardous, damage your lawn mower and void your warranty.