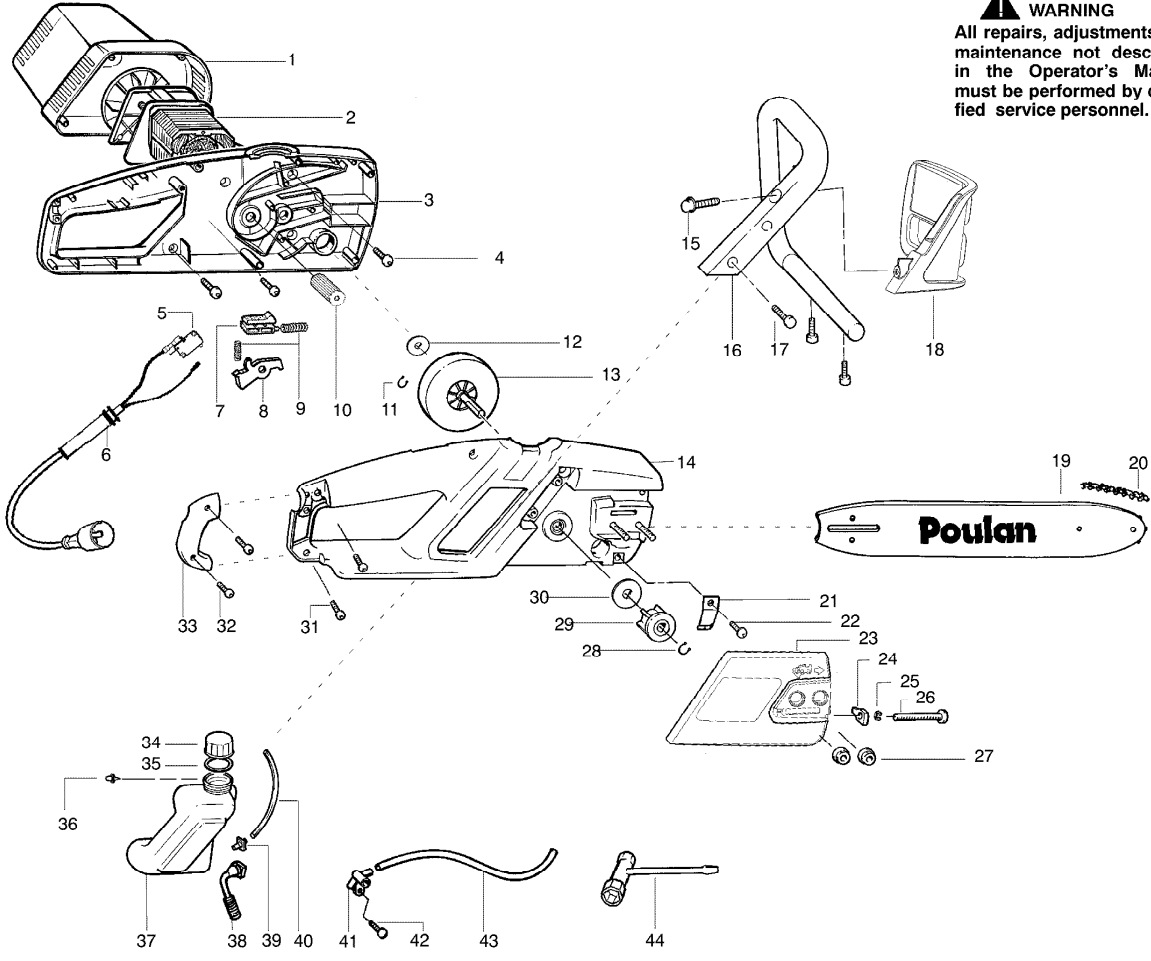


**WARNING**  
All repairs, adjustments and maintenance not described in the Operator's Manual must be performed by qualified service personnel.



Ref #	Part Number	Qty	Description
1	530403211		Motor Cover
2	530404233		Motor Outline
3	530404200		Assy-Housing
4	530015814		Screw
5	530402879		Switch-Momentary
6	530404254		Assy-Harness
7	530053179		Lockout Button
8	530053181		Trigger
9	530042091		Spring-Trigger
10	530053067		Pinion
11	530042090		Ring-Retainer
12	530016278		Washer-Thrust
13	530053048		Gear Drive
14	530053061		Housing Cover
15	530016406		Screw
16	530403237		Front Handle
17	530015814		Screw
18	530403313		Handguard
19	952044370		Bar-16"
20	952051211		Chain-16"
21	530029850		Chain Catcher
22	530015940		Screw
23	530053153		Bar Clamp
24	530053068		Pin-Bar Adjust
25	530024419		Retainer-Bar Adjust
26	530016265		Screw-Bar Adjust
27	530015917		Nut-Bar Mounting
28	530042090		Ring-Retainer
29	530053053		Sprocket (3/8 Pitch)
30	530016262		Washer-Sprocket
31	530015775		Screw
32	530015814		Screw
33	530403217		Cover Access
34	530053072		Oil Cap
35	530019136		O-Ring (Oil Cap)
36	530026119		Check Valve (Duckbill)
37	530053248		Oil Tank Ass'y.
38	530047663		Oil Pickup Ass'y.
39	530053270		Oil Pickup Fitting
40	530403393		Inlet Line
41	530403311		Oil Pump Ass'y.
42	530015775		Screw
43	530403394		Outlet Line
44	530031163		Bar Wrench
	545146939		Operator Manual
	530029543		Scabbard
	530053853		Decal-Warning