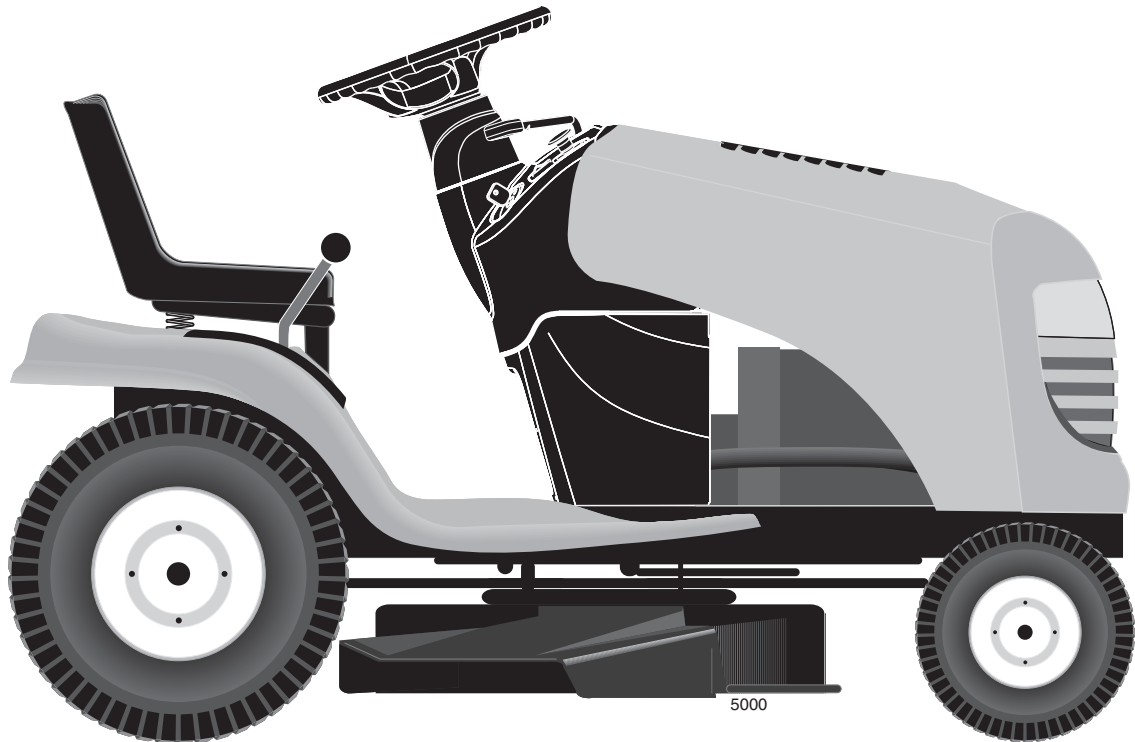


IMPORTANT MANUAL

DO NOT THROW AWAY

Poulan



REPAIR PARTS MANUAL

MODEL:

PO14538LT

LAWN TRACTOR

ALWAYS WEAR EYE PROTECTION DURING OPERATION

Visit our website: www.poulan.com

532 44 67-62



WARNING:

Read this Manual and follow all Warnings and Safety Instructions. Failure to do so can result in serious injury.

02.06.12 BD
Printed in the U.S.A.

HOW TO USE THIS MANUAL

This manual is designed to provide the customer with a means to identify the parts on his/her tractor when ordering parts. The illustrations may or may not represent the actual assemblies; therefore, it is not recommended to use this manual as a guide to assemble or disassemble the tractor. Some hardware and parts are drawn larger in order to more readily identify them.

Each tractor has its own model number.

The model number for your tractor can be found on the fender under the seat.

When ordering parts, always give the following information:

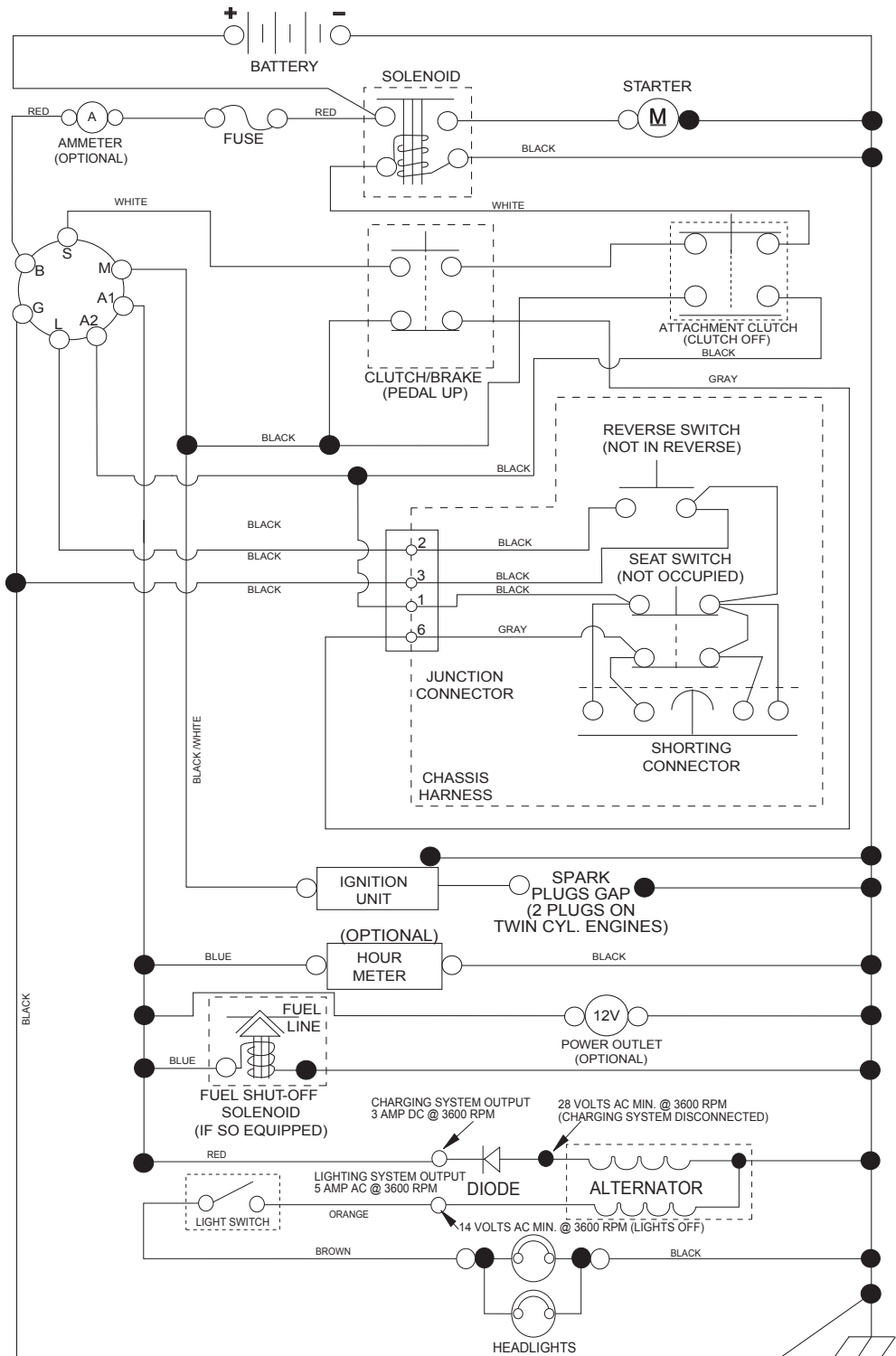
- Product - "TRACTOR"
- MODEL NUMBER - "PO14538LT (96048002200)"
- Part Number
- Part Description

TABLE OF CONTENTS

SCHEMATIC	3
ELECTRICAL.....	4-5
CHASSIS	6-7
DRIVE.....	8-9
ENGINE.....	10-11
STEERING	12-13
MOWER DECK	16-17
MOWER LIFT.....	18
SEAT	15
DECALS.....	14
WARRANTY.....	19
PARTS AND SERVICE	20

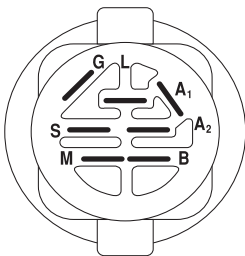
TRACTOR - MODEL NO. PO14538LT (96048002200), PRODUCT NO. 960 48 00-22 SCHEMATIC

SCH11



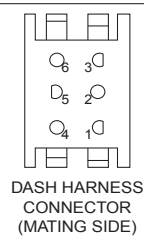
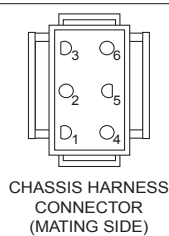
NOTE

YOUR TRACTOR IS EQUIPPED WITH A SPECIAL ALTERNATOR SYSTEM. THE LIGHTS ARE NOT CONNECTED TO THE BATTERY, BUT HAVE THEIR OWN ELECTRICAL SOURCE. BECAUSE OF THIS, THE BRIGHTNESS OF THE LIGHTS WILL CHANGE WITH ENGINE SPEED. AT IDLE THE LIGHTS WILL DIM. AS THE ENGINE IS SPEEDED UP, THE LIGHTS WILL BECOME THEIR BRIGHTEST.



IGNITION SWITCH

POSITION	CIRCUIT "MAKE"
OFF	M+G+A1
RUN/OVERRIDE	B+A1
RUN	B+A1 L+A2
START	B + S + A1

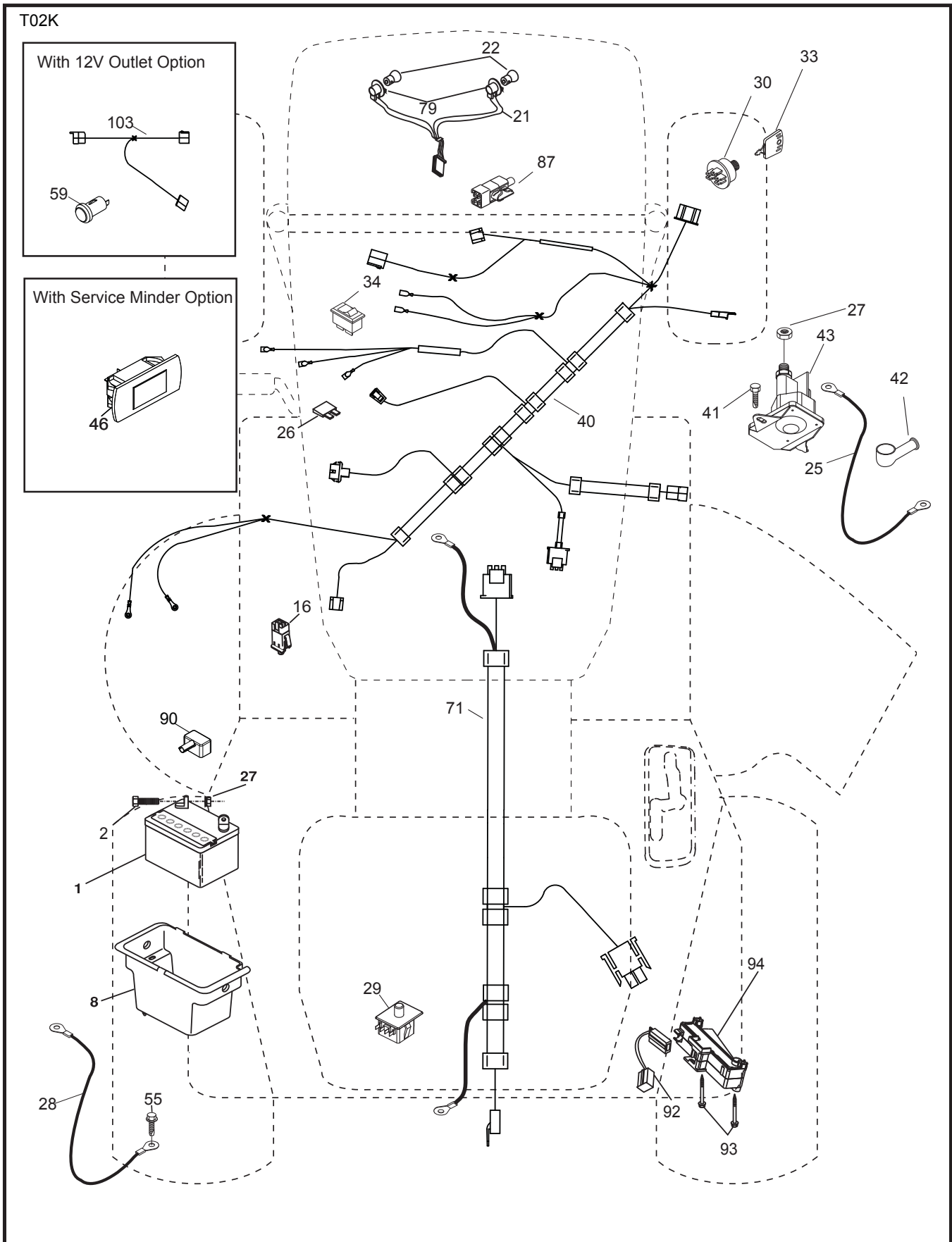


WIRING INSULATED CLIPS
NOTE: IF WIRING INSULATED CLIPS WERE REMOVED FOR SERVICING OF UNIT, THEY SHOULD BE RE-INSTALLED TO PROPERLY SECURE YOUR WIRING.

●
NON-REMOVABLE CONNECTIONS

○
REMOVABLE CONNECTIONS

**TRACTOR - MODEL NO. PO14538LT (96048002200), PRODUCT NO. 960 48 00-22
ELECTRICAL**

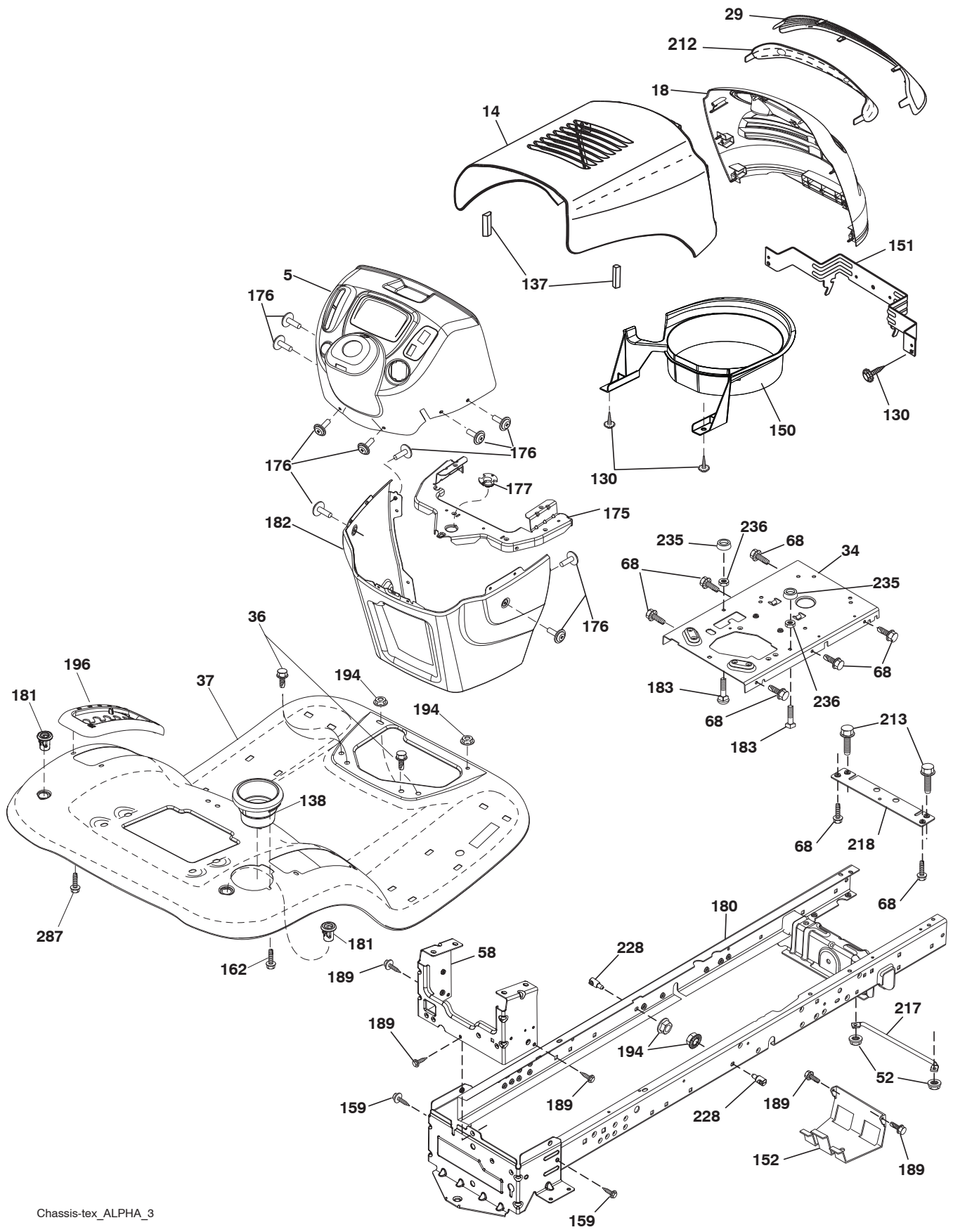


**TRACTOR - MODEL NO. PO14538LT (96048002200), PRODUCT NO. 960 48 00-22
ELECTRICAL**

KEY NO.	PART NO.	DESCRIPTION
1	532 16 34-65	Battery 12 Volt 25 Amp
2	874 76 04-12	Bolt Hex Hd 1/4-20 unc x 3/4
8	532 19 32-28	Box Battery
16	532 17 61-38	Switch Interlock
22	532 00 41-52	Bulb Light
25	532 41 28-94	Cable Starter Battery 6 Ga. BL/Red 14.5"
26	532 17 51-58	Fuse
27	873 51 04-00	Nut Keps Hex 1/4-20 unc
28	532 19 88-85	Cable Ground 6 Ga. 22" Black
29	532 19 27-49	Switch Seat
30	532 19 33-50	Switch Ign
33	532 41 19-35	Key/Chain
34	532 11 07-12	Switch Light
40	532 40 10-98	Harness Ign Dash
41	817 72 04-08	Screw 1/4-20 unc x 1/2
42	532 13 15-63	Cover Terminal Red
43	532 19 25-07	Solenoid
55	817 06 05-12	Screw 5/16-18 x 3/4
71	532 44 15-44	Harness Ign. Chass.
79	532 17 52-42	Socket Asm Bulb
87	532 19 78-02	Switch Interlock Clutch
90	532 43 53-95	Cover Terminal
92	532 19 66-15	Harness Pigtail Reverse Switch
93	532 19 25-40	Screw Plastic 10-14 x 2.0
94	532 19 18-34	Modual Reverse ROS

NOTE: All component dimensions given in U.S. inches
1 inch = 25.4 mm

**TRACTOR - MODEL NO. PO14538LT (96048002200), PRODUCT NO. 960 48 00-22
CHASSIS**



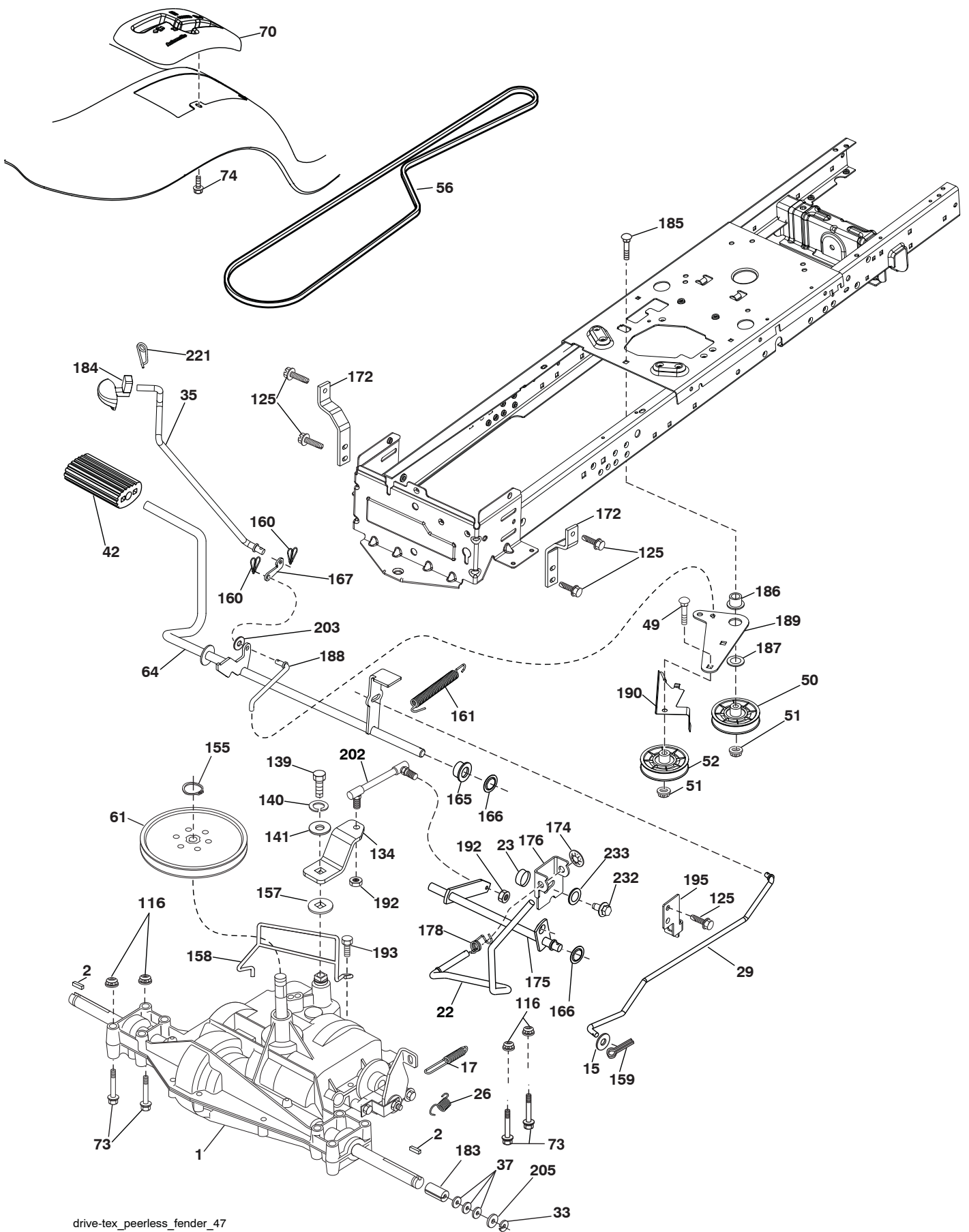
Chassis-tex_ALPHA_3

**TRACTOR - MODEL NO. PO14538LT (96048002200), PRODUCT NO. 960 48 00-22
CHASSIS**

KEY NO.	PART NO.	DESCRIPTION
5	532 41 17-64	Dash
14	532 40 61-79	Hood
18	532 42 67-41	Grille
29	532 19 54-02	Lens Bar
34	532 44 72-53	Plate Engine
36	817 06 05-12	Screw 5/16-18 x 3/4
37	532 42 09-86	Fender
52	873 68 05-00	Nut Lock 5/16-18
58	532 41 22-80	Drawbar Upper
68	817 49 05-08	Screw Thdrol 5/16-18 x 1/2
130	532 41 63-58	Screw #10 x 0.750
137	532 18 49-21	Bumper Hood
138	532 40 97-30	Cupholder
151	532 18 75-68	Bracket Pivot
152	532 19 95-35	Shield Browning/Debris
159	817 00 06-12	Screw Hexwsh Th.
162	532 14 24-32	Screw Hex Wsh Hi-Lo 1/4 x 1/2
175	532 19 32-43	Crossmember
176	532 40 07-76	Screw 10-24 x 5/8 Wshd Qdrx
177	532 19 52-28	Bushing Steering
180	532 41 50-63	Chassis
181	532 40 47-96	Bushing Mtg. Fender Crgo.
182	532 19 30-57	Dash Lower
183	874 52 05-20	Bolt 5/16-18 x 1-1/4
189	817 00 05-12	Screw 5/16-18 x 3/4
194	873 90 05-00	Nut Lock Hex Flange 5/16-18
196	532 41 45-79	Console Asm. Deck Lift
212	532 18 75-69	Insert Reflective
213	874 76 05-12	Bolt 5/16-18 x 3/4
217	532 40 91-67	Rod Pivot Hood
218	532 19 63-95	X-Piece Hood Stop
228	532 19 51-61	Stud Fastener
235	532 40 61-29	Spacer Fender
236	873 93 05-00	Nut Center Lock 5/16-18
287	817 60 04-06	Screw 1/4-20 x 3/8

NOTE: All component dimensions given in U.S. inches
1 inch = 25.4 mm

TRACTOR - MODEL NO. PO14538LT (96048002200), PRODUCT NO. 960 48 00-22 DRIVE



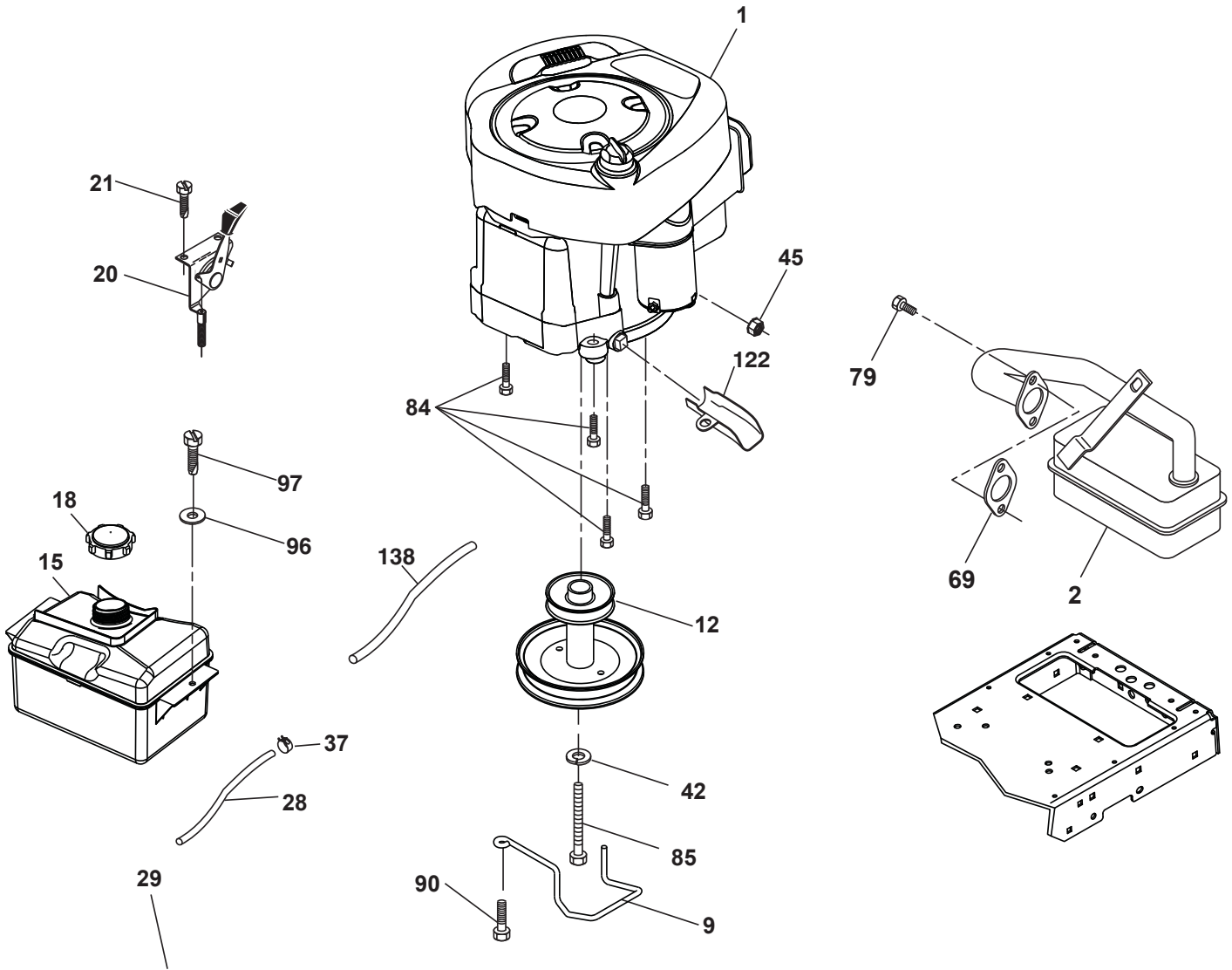
drive-tex_peerless_fender_47

**TRACTOR - MODEL NO. PO14538LT (96048002200), PRODUCT NO. 960 48 00-22
DRIVE**

KEY NO.	PART NO.	DESCRIPTION	KEY NO.	PART NO.	DESCRIPTION
1	---	Transaxle, Peerless 206-565 (430731)(Order parts from transaxle manufacturer.)	159	876 02 04-12	Pin Cotter 1/8 x 3/4
2	532 12 35-83	Key Square	160	532 16 94-84	Retainer Clip
15	819 13 13-16	Washer 13/32 x 13/16 x 16 Ga.	161	532 10 57-09	Spring, Return, Clutch
17	532 19 72-97	Spring, Brake	165	532 19 62-12	Busing Shaft Brake Hand Control
22	532 19 76-60	Rod Shift	166	532 42 91-64	Nut Push .625
23	532 10 69-33	Knob	167	532 40 52-57	Latch Brake Parking
26	532 19 74-55	Spring Brake RTN	172	532 19 76-57	Strap Torque LH
29	532 19 72-67	Rod, Brake	174	532 19 72-89	Nut Push
33	812 00 00-01	Ring E	175	532 19 78-58	Shaft Asm Shift
35	532 19 77-22	Rod, Brake, Park	176	532 19 62-14	Arm Clevis Rod Shift
37	532 12 17-49	Washer 25/32 x 1-1/4 x 16 Ga.	178	532 19 74-56	Spring Shift
42	532 12 48-72	Cover, Foot Pedal	183	532 13 70-57	Spacer, Axle
49	872 11 06-14	Bolt	184	532 44 15-04	Handle Parking Brake
50	532 19 43-27	Pulley Idler Flat	185	872 11 06-22	Bolt
51	873 90 06-00	Lock Nut 3/8-16	186	532 19 43-21	Spacer Retainer
52	532 19 43-26	Idler V-Groove	187	819 13 32-10	Washer
56	532 19 43-46	V-Belt, Drive	188	532 19 43-23	Link Clutch Ground Drive
61	532 12 36-66	Pulley Transaxle	189	532 19 43-17	Bellcrank Ground Drive
64	532 19 62-00	Shaft Asm. Pedal Brake Control	190	532 19 43-18	Keeper Bellcrank Ground Drive
70	532 41 12-90	Console	192	532 15 03-60	Nut Lock Center 1/4-28
73	874 49 05-40	Bolt 5/16-18 x 2-1/2 G5	193	817 06 05-12	Screw 5/16-18 x 3/4
74	532 14 24-32	Screw 1/4 x 1/2	195	532 19 73-32	Bracket Brake Rod
116	873 90 05-00	Nut Lock Hex Flange 5/16-18	202	532 19 78-59	Link Shift
125	817 00 05-12	Screw 5/16-18 x 3/4	203	819 11 11-16	Washer 11/32 x 11/16 x 16 Ga.
134	532 19 78-57	Arm Shift	205	532 12 17-48	Washer 25/32 x 1-5/8 x 16 Ga.
139	874 55 04-12	Bolt 1/4-20 unf Gr. 8 w/Patch	221	532 40 31-87	Retainer Spring Clip Handle
140	810 04 04-00	Washer Lock Hvy Helical 1/4	232	874 78 07-16	Bolt 7/16-14 x 1 Gr. 5
141	819 09 12-10	Washer 9/32 x 3/4 x 10 Ga.	233	532 40 52-96	Washer Serrated
155	812 00 00-28	Ring Retainer			
157	532 10 57-01	Washer Plate Shf			
158	532 19 43-52	Keeper T/A			

NOTE: All component dimensions given in U.S. inches
1 inch = 25.4 mm

**TRACTOR - MODEL NO. PO14538LT (96048002200), PRODUCT NO. 960 48 00-22
ENGINE**



OPTIONAL EQUIPMENT
Spark Arrester

engine-tex_BS_65

TRACTOR - MODEL NO. PO14538LT (96048002200), PRODUCT NO. 960 48 00-22 ENGINE

KEY NO.	PART NO.	DESCRIPTION
1	— — — — —	Engine Briggs Model No. 31A507-1516-B1 (438749)(Order parts from engine manufacturer.)
2	532 13 73-52	Muffler
9	532 19 43-19	Keeper Belt Engine
12	532 40 19-85	Pulley Engine
15	532 43 30-03	Tank Fuel 1.5
18	532 43 85-96	Cap
20	532 17 05-45	Control Throttle
21	532 41 63-58	Screw #10 x 0.750
28	532 40 11-37	Fuel Line
29	532 13 71-80	Spark Arrester Kit
37	532 12 34-87	Clamp Hose
42	810 04 07-00	Washer Lock 7/16
45	873 51 04-00	Nut Keps Hex 1/4-20 unc
69	532 16 52-91	Gasket
79	532 19 23-34	Screw 5/16 - 18 x .75
84	817 06 06-20	Screw 3/8-16 x 1-1/4
85	532 17 39-37	Bolt Hex 7/16-20 x 4 Gr. 5
90	817 00 06-16	Screw 3/8-16 x 1
96	819 09 14-16	Washer 9/32 x 7/8 x 16 Ga.
97	817 67 04-12	Screw 1/4-20 x 3/4
122	532 42 19-22	Extension Drain Oil
138	532 41 41-19	Purge Line

NOTE: All component dimensions given in U.S. inches.
1 inch = 25.4 mm

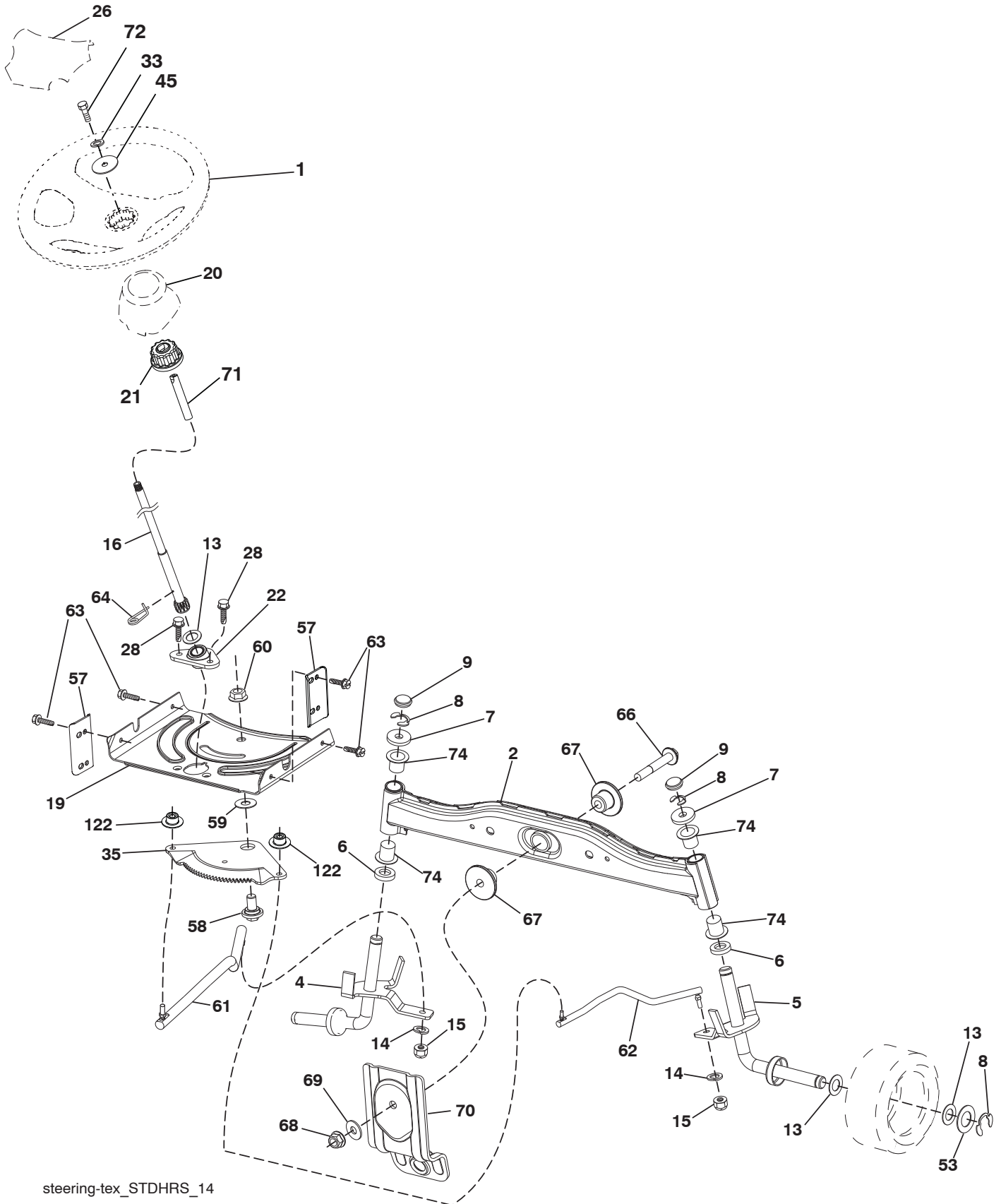
For engine service and replacement parts, call the toll free number for your engine manufacturer listed below:

Briggs & Stratton 1-800-233-3723

Engine Power Rating Information

The gross power rating for individual gas engine models is labeled in accordance with SAE (Society of Automotive Engineers) code J1940 (Small Engine Power & Torque Rating Procedure), and rating performance has been obtained and corrected in accordance with SAE J1995 (Revision 2002-05). Torque values are derived at 3060 RPM; horsepower values are derived at 3600 RPM. Actual gross engine power will be lower and is affected by, among other things, ambient operating conditions and engine-to-engine variability. Given both the wide array of products on which engines are placed and the variety of environmental issues applicable to operating the equipment, the gas engine will not develop the rated gross power when used in a given piece of power equipment (actual "on-site" or net power). This difference is due to a variety of factors including, but not limited to, accessories (air cleaner, exhaust, charging, cooling, carburetor, fuel pump, etc.), application limitations, ambient operating conditions (temperature, humidity, altitude), and engine-to-engine variability. Due to manufacturing and capacity limitations, Briggs & Stratton may substitute an engine of higher rated power for this Series engine.

TRACTOR - MODEL NO. PO14538LT (96048002200), PRODUCT NO. 960 48 00-22
STEERING



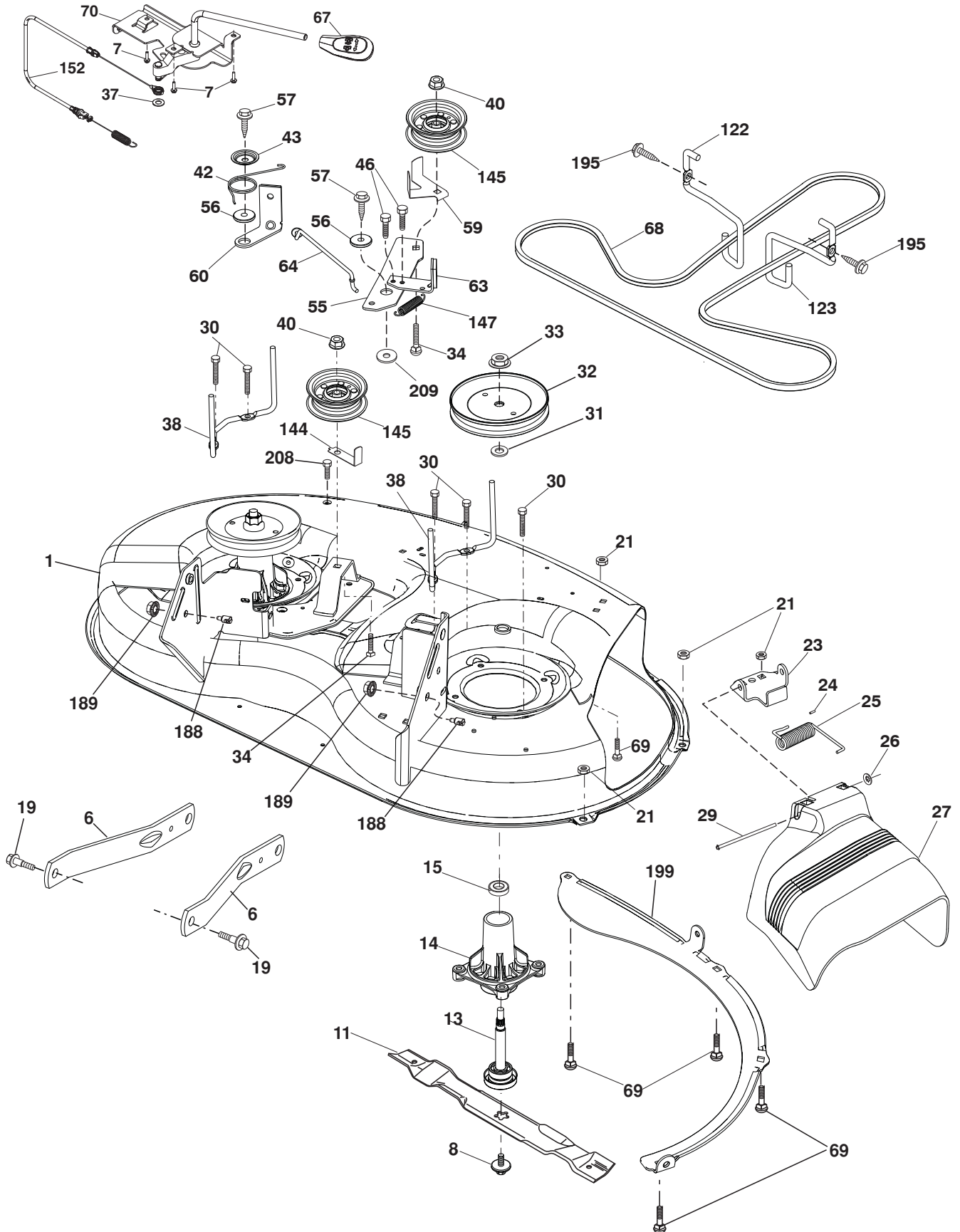
steering-tex_STDHRS_14

**TRACTOR - MODEL NO. PO14538LT (96048002200), PRODUCT NO. 960 48 00-22
STEERING**

KEY NO.	PART NO.	DESCRIPTION
1	532 42 45-43	Wheel, Steering
2	532 41 81-68	Axle Asm., Front
4	532 40 30-87	Spindle Asm., LH
5	532 40 30-88	Spindle Asm., RH
6	532 12 49-31	Washer Thrust 0.75 x 1.23
7	532 12 17-48	Washer 25/32 x 1-5/8 x 16 Ga.
8	812 00 00-29	Ring, Clip #T5304-75
9	532 12 12-32	Cap, Spindle
13	532 12 17-49	Washer 25/32 x 1-1/4 x 16 Ga.
14	810 04 06-00	Washer Lock 3/8
15	873 54 06-00	Nut, Crown Lock 3/8-24 unf
16	532 42 93-74	Shaft Steering
19	532 19 47-29	Plate Steering
20	532 41 12-91	Boot, Steering
21	532 18 67-37	Adapter, Wheel Steering
22	532 42 05-37	Support, Strg. Lower
26	532 42 46-91	Insert, Wheel Steering
28	817 00 06-12	Screw 3/8-16 x 3/4
33	810 04 05-00	Washer Lock 5/16
35	532 19 47-32	Gear, Sector Plate
45	819 11 38-12	Washer 11/32 x 2-3/8 x 12 Ga.
53	532 18 89-67	Washer Hardened .793 x 1.637 x .060
57	532 40 74-65	Bracket Upstop
58	532 19 47-47	Bolt Shoulder Sector Pivot CFM
59	532 19 47-48	Washer Thrust Sector Steering
60	873 97 10-00	Nut Flange Lock 5/8-11
61	532 19 47-40	Draglink, LH
62	532 19 47-41	Draglink, RH
63	817 00 05-12	Screw 5/16-18 x 3/4
64	532 19 98-49	Retainer Clip Spring Steering
66	871 02 07-48	Bolt Hex Fghd 7/16-14 x 3 Serr
67	532 19 47-37	Bushing PM Front Axle
68	873 90 07-00	Nut Lock Flange 7/16-14 Gr. 5
69	532 19 91-62	Washer 1.5 x .505 x .118
70	532 19 61-97	Bracket Deck Susp. Front
71	532 19 07-52	Shaft Ext. Steering
72	532 42 89-82	Bolt 5/16-18 x 4 w/Patch
74	532 12 49-37	Bearing
122	532 44 49-62	Cap Gear Sector

NOTE: All component dimensions given in U.S. inches
1 inch = 25.4 mm

**TRACTOR - MODEL NO. PO14538LT (96048002200), PRODUCT NO. 960 48 00-22
MOWER DECK**

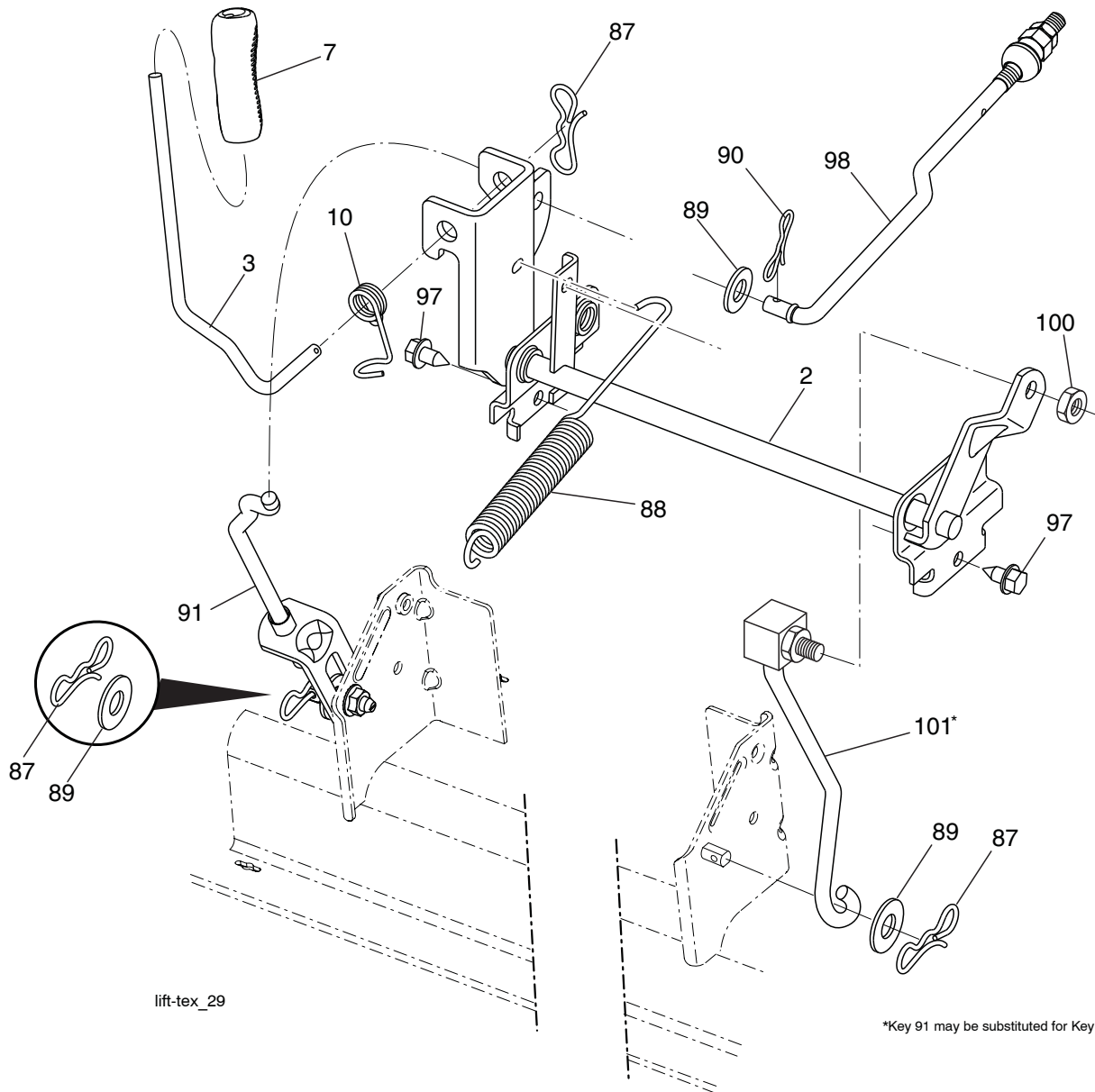


**TRACTOR - MODEL NO. PO14538LT (96048002200), PRODUCT NO. 960 48 00-22
MOWER DECK**

KEY NO.	PART NO.	DESCRIPTION	KEY NO.	PART NO.	DESCRIPTION
1	532 19 42-51	Mower Housing	59	532 14 10-43	Guard, Tuv Idler
6	532 19 51-86	Arm Suspension	60	532 19 94-71	Arm Brake Mower
7	532 41 63-58	Screw #10 x 0.750 BOS Thread	63	532 19 94-70	Arm Brake Mower
8	532 19 30-03	Bolt/Washer Asm 7/16-20 unf	64	532 19 97-90	Link Brake
11	532 19 39-57	Blade	67	532 40 30-12	Handle Clutch Cable
13	532 19 28-72	Shaft Assembly Mandrel	68	532 40 83-81	V-Belt
14	532 18 72-81	Housing Mandrel	69	872 14 05-05	Bolt
15	532 11 04-85	Bearing, Ball, Mandrel	70	532 19 83-32	Clutch Asm Manual
19	532 19 65-39	Bolt, Shoulder	122	532 19 72-58	Keeper Belt Engine LH
21	873 68 05-00	Nut, Crownlock 5/16-18 unc	123	532 19 72-59	Keeper Belt Engine RH
23	532 19 25-57	Bracket, Deflector	144	532 19 34-14	Keeper Belt
24	532 10 53-04	Cap, Sleeve	145	532 19 31-97	Pulley Idler
25	532 19 70-26	Spring, Torsion, Deflector	147	532 40 18-72	Spring Return
26	532 11 04-52	Nut, Push	152	532 43 51-11	Manual Clutch Cable
27	532 19 39-68	Shield, Deflector	188	532 19 51-61	Stud Fastener
29	532 13 14-91	Rod, Hinge	189	873 90 05-00	Nut Lock Hex Flange
30	532 17 39-84	Screw Thdrol Rolling Wsh Hd	195	817 00 06-12	Screw 3/8-16 x 3/4
31	532 18 76-90	Washer, Spacer	199	532 40 00-95	Baffle Vortex
32	532 19 97-89	Pulley, Mandrel	208	817 67 06-08	Screw Hex Wsh. Hd. 3/8-16 x 1/2
33	532 40 02-34	Nut, Toplock, Flanged	209	819 13 32-10	Washer 13/32 x 2 x 10
34	872 11 06-12	Bolt Carr Sh. 3/8-16 x 1-1/2 Gr. 5	--	532 19 28-70	Mandrel Assembly (Includes housing, shaft assembly, and bearing only - pulley/nut/washer and blade bolt/washers not included)
37	819 13 13-16	Washer	--	532 43 32-70	Replacement Mower, Complete
38	532 19 95-41	Keeper Belt LH Mandrel			
40	873 90 06-00	Nut, Lock Flg. 3/8-16 unc			
42	532 19 84-10	Spring Torsion Brake			
43	532 19 72-56	Spring Torsion Retainer			
46	532 13 77-29	Screw 1/4-20 x 5/8			
55	532 19 72-49	Arm, Idler			
56	532 19 90-92	Spacer, Retainer			
57	817 00 06-16	Screw 3/8-16 x 1			

NOTE: All component dimensions given in U.S. inches
1 inch = 25.4 mm

**TRACTOR - MODEL NO. PO14538LT (96048002200), PRODUCT NO. 960 48 00-22
MOWER LIFT**



lift-tex_29

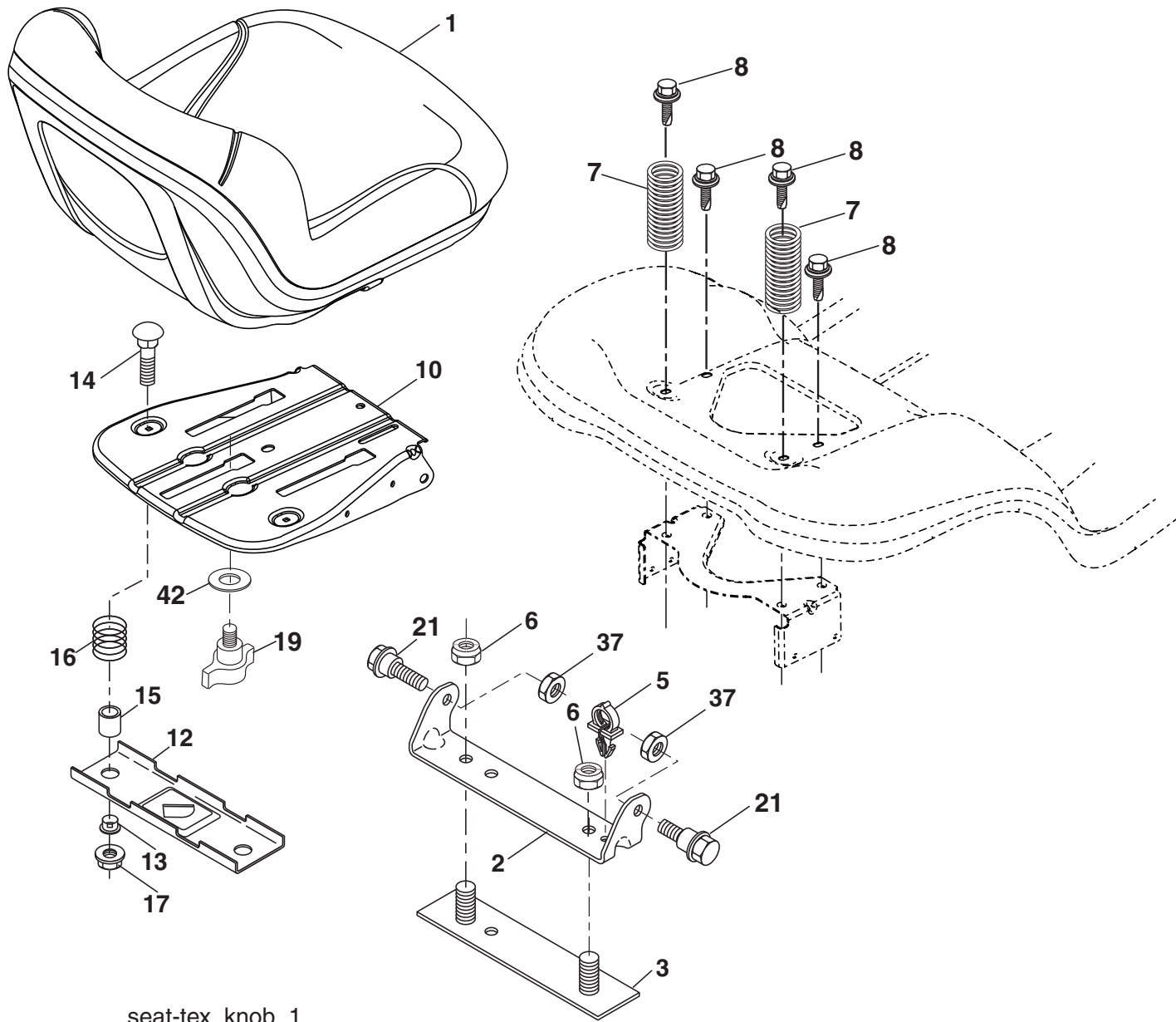
*Key 91 may be substituted for Key 101

KEY NO.	PART NO.	DESCRIPTION
2	532 42 20-27	Shaft Asm., Cross Lift
3	532 19 52-31	Lever Asm., Lift RH
7	532 41 15-55	Grip, Lever
10	532 19 63-14	Spring Torsion
87	532 19 42-09	Pin Cotter 7/16 Bow Tie Lock
88	532 41 07-10	Spring Lift Assist
89	819 19 19-12	Washer Clear Zinc
90	532 19 42-08	Pin Cotter 5/16 Bow Tie Lock
91	532 19 51-81	Link Lift Susp Mower Rear

KEY NO.	PART NO.	DESCRIPTION
97	817 00 06-12	Screw 3/8-16 x .75 Smgml Tap/R.Z
98	532 19 52-70	Link Lift Susp. Front Mower
100	873 93 06-00	Nut Centerlock 3/8 -16 unc
101	532 40 70-03	Link Asm Lift Fixed
113	819 17 19-12	Washer 17/32 x 1-3/16 x 12 Ga.

NOTE: All component dimensions given in U.S. inches
1 inch = 25.4 mm

TRACTOR - MODEL NO. PO14538LT (96048002200), PRODUCT NO. 960 48 00-22 SEAT

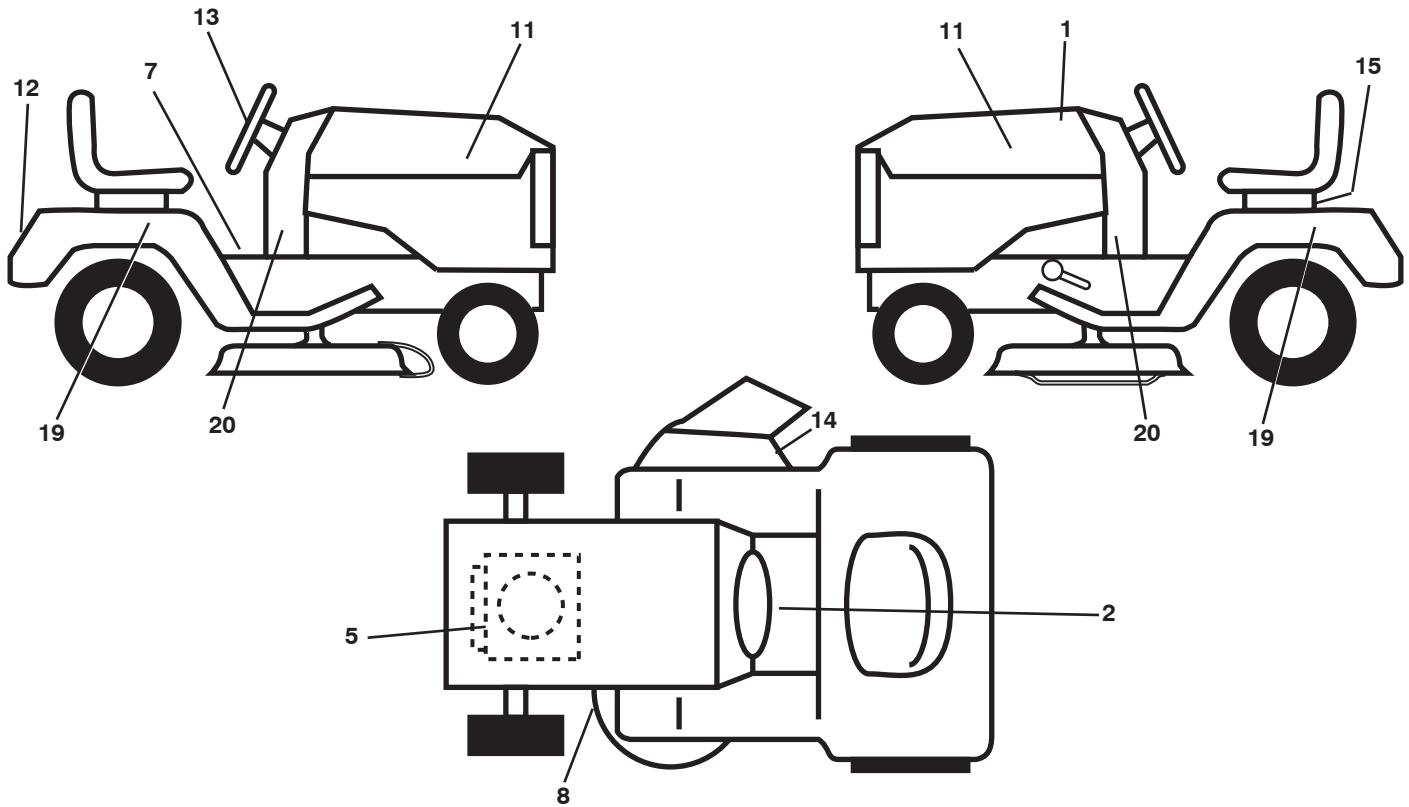


seat-tex_knob_1

KEY NO.	PART NO.	DESCRIPTION	KEY NO.	PART NO.	DESCRIPTION
1	532 40 30-17	Seat	15	532 13 43-00	Spacer Split
2	532 18 01-66	Bracket Pivot Fender	16	532 12 37-40	Spring CPRSN Plate SW 1.310 Ga.
3	532 14 06-75	Strap, Asm Fender	17	532 12 39-76	Nut Lock 1/4 Gr.5
5	532 14 50-06	Clip Push-In Hinged	19	532 19 93-72	Knob Seat
6	873 80 06-00	Nut, Lock w/Ins. 3/8-16 unc	21	532 17 18-52	Bolt, Shoulder 5/16-18
7	532 12 41-81	Spring, Seat Cprsn	37	873 80 05-00	Nut, Lock 5/16-18 unc
8	532 17 18-77	Bolt 5/16-18 unc x 3/4 w/Sems	42	532 19 93-71	Washer Cup Seat
10	532 44 18-05	Pan, Seat			
12	532 19 93-70	Bracket Seat Mounting			
13	532 12 12-48	Bushing Snap			
14	872 05 04-12	Bolt 1/4 - 20 X 1-1/2			

NOTE: All component dimensions given in U.S. inches
1 inch = 25.4 mm

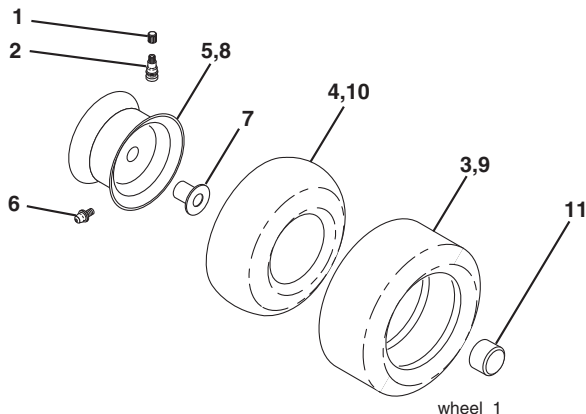
TRACTOR - MODEL NO. PO14538LT (96048002200), PRODUCT NO. 960 48 00-22



KEY NO.	PART NO.	DESCRIPTION
1	532 44 66-05	Decal Replacement
2	532 43 52-86	Decal, Warn. Spark
5	532 43 10-89	Decal, Eng. HP
7	532 41 16-58	Decal, Warning
8	532 19 43-02	Decal, V-Belt Sch.
11	532 43 19-83	Decal, Hood RH/LH
12	532 43 19-86	Decal, Fender
13	532 43 19-82	Decal, Wheel Strg.
14	532 17 05-63	Decal, Defl. Warning

KEY NO.	PART NO.	DESCRIPTION
15	532 14 50-05	Decal, Caution, Battery
19	532 43 19-85	Decal, Fender
20	532 44 06-32	Decal, Dash Lower
--	532 41 12-73	Pad Footrest RH
--	532 40 95-05	Pad Footrest LH
--	532 44 67-61	Manual, Operator's (English/French)
--	532 44 67-62	Manual, Parts (English/French)

WHEELS & TIRES



KEY NO.	PART NO.	DESCRIPTION
1	532 05 91-92	Cap, Tire Valve
2	532 06 51-39	Stem, Valve
3	532 10 62-22	Tire, Front
4	532 05 99-04	Tube, Front (Service item only)
5	532 18 33-37	Rim Assembly, 6" Front
6	532 12 49-57	Fitting, Grease (Front wheel only)
7	532 12 49-59	Bearing, Flange (Front wheel only)
8	532 18 33-38	Rim Assembly, 8" Rear
9	532 12 46-35	Tire, Rear
10	532 12 49-26	Tube, Rear (Service item only)
11	532 17 50-39	Cap, Hub Axle
--	532 14 43-34	Sealant, Tire (10 oz. Tube)

NOTE: All component dimensions given in U.S. inches
1 inch = 25.4 mm.

LIMITED WARRANTY

The Manufacturer warrants to the original consumer purchaser that this product as manufactured is free from defects in materials and workmanship. For a period of two (2) years from date of purchase by the original consumer purchaser, we will repair or replace, at our option, without charge for parts or labor incurred in replacing parts, any part which we find to be defective due to materials or workmanship. This Warranty is subject to the following limitations and exclusions.

1. This warranty does not apply to the engine, transaxle/transmission components, battery (except as noted below) or components parts thereof. Please refer to the applicable manufacturer's warranty on these items.
2. Transportation charges for the movement of any power equipment unit or attachment are the responsibility of the purchaser. Transportation charges for any parts submitted for replacement under this warranty must be paid by the purchaser unless such return is requested by the manufacturer.
3. Battery Warranty: On products equipped with a Battery, we will replace, without charge to you, any battery which we find to be defective in manufacture, during the first ninety (90) days of ownership. After ninety (90) days, we will exchange the Battery, charging you 1/12 of the price of a new Battery for each full month from the date of the original sale. Battery must be maintained in accordance with the instructions furnished.
4. The Warranty period for any products used for rental or commercial purposes is limited to 90 days from the date of original purchase.
5. This Warranty applies only to products which have been properly assembled, adjusted, operated, and maintained in accordance with the instructions furnished. This Warranty does not apply to any product which has been subjected to alteration, misuse, abuse, improper assembly or installation, delivery damage, or to normal wear of the product.
6. Exclusions: Excluded from this Warranty are belts, blades, blade adapters, normal wear, normal adjustments, standard hardware and normal maintenance.
7. In the event you have a claim under this Warranty, you must return the product to an authorized service dealer.

Should you have any unanswered questions concerning this Warranty, please contact:

HOP
Outdoor Products Customer Service Dept.
9335 Harris Corners Parkway
Charlotte, NC 28269 USA

In Canada contact:
HOP
5855 Terry Fox Way
Mississauga, Ontario
L5V 3E4

giving the model number, serial number and date of purchase of your product and the name and address of the authorized dealer from whom it was purchased.

THIS WARRANTY DOES NOT APPLY TO INCIDENTAL OR CONSEQUENTIAL DAMAGES AND ANY IMPLIED WARRANTIES ARE LIMITED TO THE SAME TIME PERIODS STATED HEREIN FOR OUR EXPRESSED WARRANTIES. Some areas do not allow the limitation of consequential damages or limitations of how long an implied Warranty may last, so the above limitations or exclusions may not apply to you. This Warranty gives you specific legal rights, and you may have other rights which vary from locale to locale.

This is a limited Warranty within the meaning of that term as defined in the Magnuson-Moss Act of 1975.

Poulan

PARTS AND SERVICE

This product has been expertly engineered and carefully manufactured to rigid quality standards. As with all mechanical products, some adjustments or part replacement may be necessary during the life of your unit.

For Parts and service, contact our authorized distributor: call 1-800-849-1297

- For replacement parts, have available the following information:
 - a. Model Number/Manufacturer's I.D. Number
 - b. Description of part.

For Technical Assistance: call 1-800-829-5886

For a Parts Manual, go to our website: www.poulan.com

NOTE: HOP provides parts and service through its authorized distributors and dealers; therefore, all requests for parts and service should be directed to your local dealer(s). The philosophy of HOP is to continually improve all of its products. If the operating characteristics or the appearance of your product differs from those described in this Manual, please contact your local dealer for updated information and assistance.

Poulan

L'ENTRETIEN ET LES PIÈCES DE RECHANGE

Ce produit, conçu avec les soins les plus attentifs, est fabriqué en accord avec des standards stricts. Comme pour tous les produits avec des parties mobiles, il peut être nécessaire pendant la durabilité de votre machine d'effectuer des ajustements ou le remplacement de certaines pièces .

Pour les pièces de rechange et l'entretien, contactez notre concessionnaire autorisé: appelez 1-800-849-1297

- Pour les pièces de rechange, ayez près de vous:

- a. Numéro du modèle/Référence numéro du fabricant

- b. Description de la pièce

Pour l'assistance technique: appelez 1-800-829-5886

Pour un manuel de pièces, allez à notre site web: www.poulan.com

N.B.: HOP assure la distribution des pièces de rechange et l'entretien de ses produits par l'intermédiaire des concessionnaires et des distributeurs agréés; par conséquent toute demande de pièces ou d'entretien doit être adressée directement au distributeur agréé le plus proche. La philosophie de HOP est d'améliorer en permanence la gamme complète de ses produits. Si les caractéristiques ou l'apparence de votre outil sont différentes de celles décrites dans ce Manuel, contactez S.V.P. votre concessionnaire pour les informations et l'assistance concernant les mises à jour.

LIMITED WARRANTY

The Manufacturer warrants to the original consumer purchaser that this product as manufactured is free from defects in materials and workmanship. For a period of two (2) years from date of purchase by the original consumer purchaser, we will repair or replace, at our option, without charge for parts or labor incurred in replacing parts, any part which we find to be defective due to materials or workmanship. This Warranty is subject to the following limitations and exclusions.

1. This warranty does not apply to the engine, transmission, axle/transmission components, battery (except as noted below) or components parts thereof. Please refer to the applicable manufacturer's warranty on these items.
2. Transportation charges for the movement of any power equipment unit or attachment are the responsibility of the purchaser. Transportation charges for any parts submitted for replacement under this warranty must be paid by the purchaser unless such return is requested by the manufacturer.

3. Battery Warranty: On products equipped with a Battery, we will replace, without charge to you, any battery which we find to be defective in manufacture, during the first ninety (90) days of ownership. After ninety (90) days, we will exchange the Battery, charging you 1/12 of the price of a new Battery for each full month from the date of the original sale. Battery must be maintained in accordance with the instructions furnished.

4. The Warranty period for any products used for rental or commercial purposes is limited to 90 days from the date of original purchase.

5. This Warranty applies only to products which have been properly assembled, adjusted, operated, and maintained in accordance with the instructions furnished. This Warranty does not apply to any product which has been subjected to alteration, misuse, abuse, improper assembly or installation, delivery damage, or to normal wear of the product.

6. Exclusions: Excluded from this Warranty are belts, blades, blade adapters, normal wear, normal adjustments, standard hardware and normal maintenance.

7. In the event you have a claim under this Warranty, you must return the product to an authorized service dealer. Should you have any unanswered questions concerning this Warranty, please contact:

HOP
Outdoor Products Customer Service Dept.
9335 Harris Corners Parkway
Charlotte, NC 28269 USA

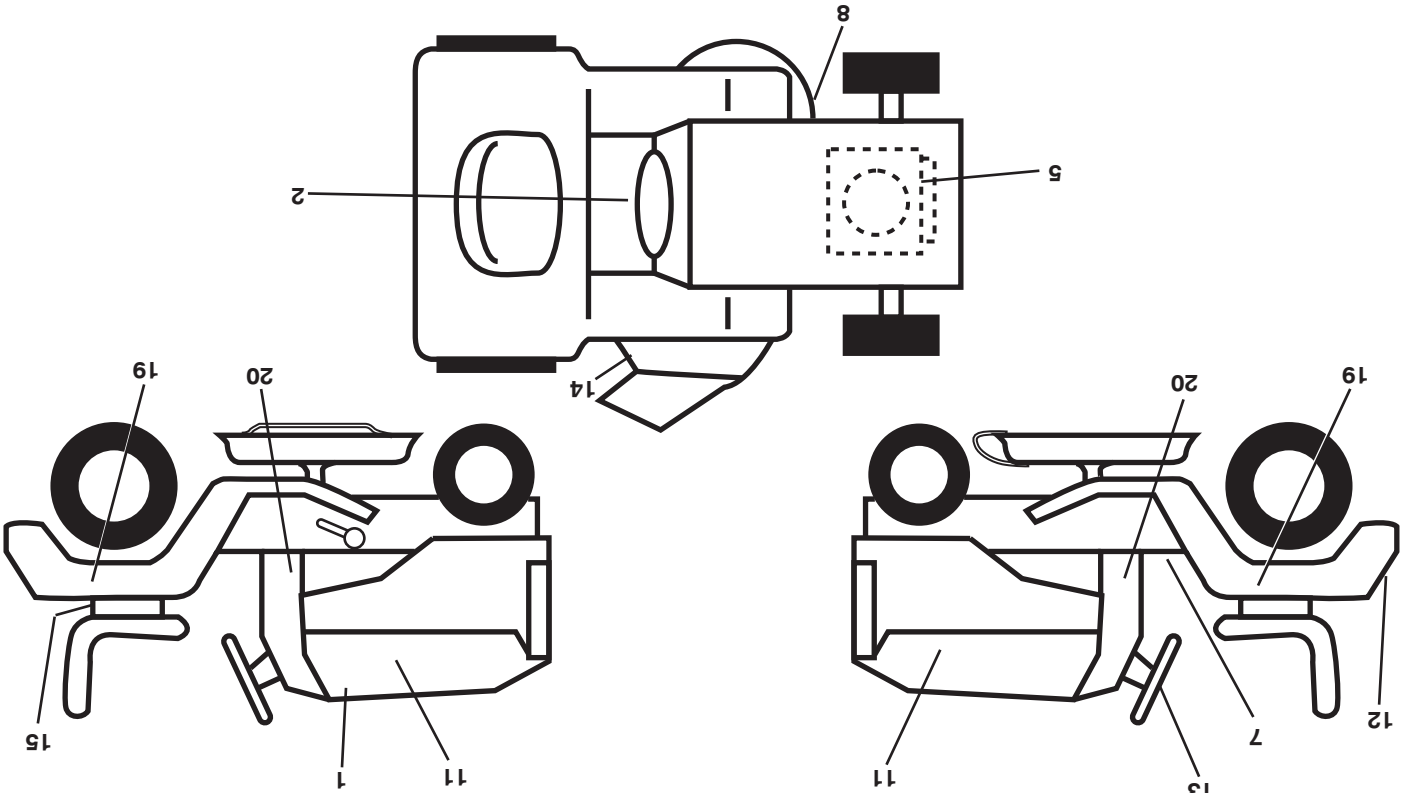
In Canada contact:
HOP
5855 Terry Fox Way
Mississauga, Ontario
L5V 3E4

giving the model number, serial number and date of purchase of your product and the name and address of the authorized dealer from whom it was purchased.

THIS WARRANTY DOES NOT APPLY TO INCIDENTAL OR CONSEQUENTIAL DAMAGES AND ANY IMPLIED WARRANTIES ARE LIMITED TO THE SAME TIME PERIODS STATED HEREIN FOR OUR EXPRESSED WARRANTIES. Some areas do not allow the limitation of consequential damages or limitations of how long an implied Warranty may last, so the above limitations or exclusions may not apply to you. This Warranty gives you specific legal rights, and you may have other rights which vary from locale to locale.

This is a limited Warranty within the meaning of that term as defined in the Magnuson-Moss Act of 1975.

DÉCALCOMANIE



NO. DE PIÈCE REF.

DESCRIPTION

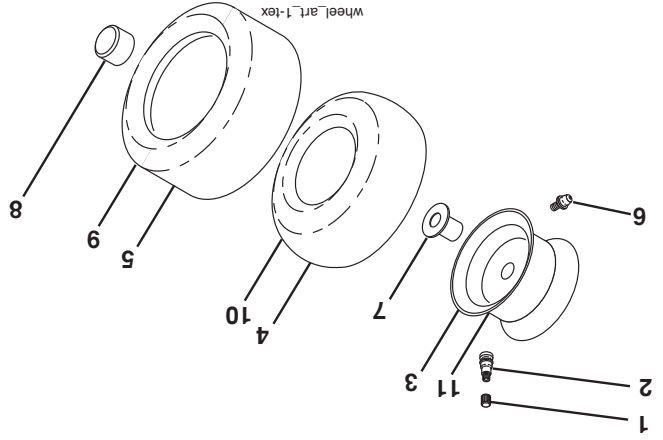
- 1 532 44 66-05 Décalcomanie
- 2 532 43 52-86 Décalcomanie d'avertissement
- 5 532 43 10-89 Décalcomanie du moteur C.V.
- 7 532 41 16-58 Décalcomanie d'avertissement
- 8 532 19 43-02 Décalcomanie de la courroie tra-
- 11 532 43 19-83 Décalcomanie du capot C.D./C.G. pédoïdale
- 12 532 43 19-86 Décalcomanie du aile
- 13 532 43 19-82 Décalcomanie de volant de direction.

NO. DE PIÈCE REF.

DESCRIPTION

- 14 532 17 05-63 Décalcomanie d'avertissement
- 15 532 14 50-05 Décalcomanie de la batterie
- 19 532 43 19-85 Décalcomanie du aile
- 20 532 44 06-32 Décalcomanie
- 532 41 12-73 Coussin Du Repose-Pied C.G.
- 532 40 95-05 Coussin Du Repose-Pied C.D.
- 532 44 67-61 Manuel de L'Opérateur (Anglais/Français)
- 532 44 67-62 Manuel des Pièces de Remplacement (Anglais/Français)

ROUES & PNEUS



NO. DE PIÈCE REF.

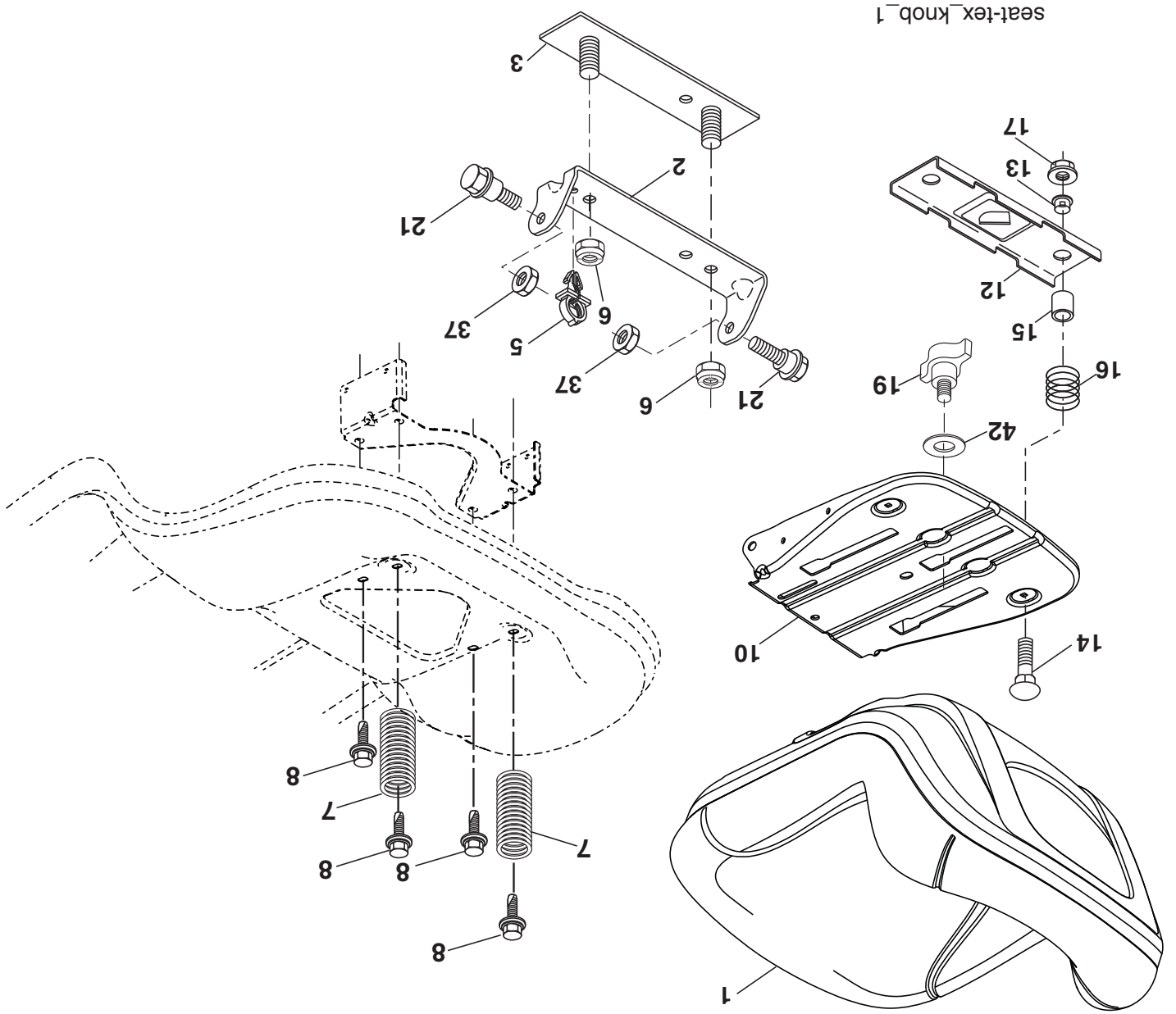
DESCRIPTION

- 1 532 05 91-92 Capuchon de valve
- 2 532 06 51-39 Tubulure de la valve
- 3 532 10 62-22 Pneu antérieur
- 4 532 05 99-04 Chambre à air antérieure
- 5 532 18 33-37 Pneu F T
- 6 532 12 49-57 Graisseur (roue antérieure seulement)
- 7 532 12 49-59 Paller à bride (roue antérieure seulement)
- 8 532 18 33-38 Ensemble de la jante arrière de 150 x 10
- 9 532 12 46-35 Pneu arrière
- 10 532 12 49-26 Chambre à air arrière (non fournie)
- 11 532 17 50-39 Chapeau de l'essieu
- 532 14 43-34 Joint d'étanchéité de pneu (tube de .30L [10 oz. Tube])

REMARQUE: Toutes les dimensions de composant sont données en pouces E.-U. -- 1 pouce = 25,4 mm.

TRACTEUR - NO DE MODÈLE PO14538LT (96048002200), NO. DE PRODUIT 960 48 00-22

ENSEMBLE DU SIÈGE



NO. DE PIÈCE	DESCRIPTION	NO. DE PIÈCE	DESCRIPTION
1	Siège	14	Boulon 1/4 - 20 X 1-1/2
2	Support de pivot	15	Entretoise
3	Attache De L'ensemble De L'aile	16	Ressort 1,310 Ja.
5	Collier pressé	17	Ecrou 1/4 Cat.5
6	Ecrou 3/8-16 unc	19	Bouton Du Siège
7	Ressort	21	Boulon 5/16-18
8	Boulon 5/16-18 unc x 3/4	37	Ecrou 5/16-18 unc
10	Bac Du Siège	42	Rondelle
12	Support		
13	Douille Fendue De Bouton-Pression		

REMARQUE: Toutes les dimensions de composant sont données en pouces E.-U. -- 1 pouce = 25,4 mm.

TRACTEUR - NO DE MODELE PO14538LT (96048002200), NO. DE PRODUIT 960 48 00-22

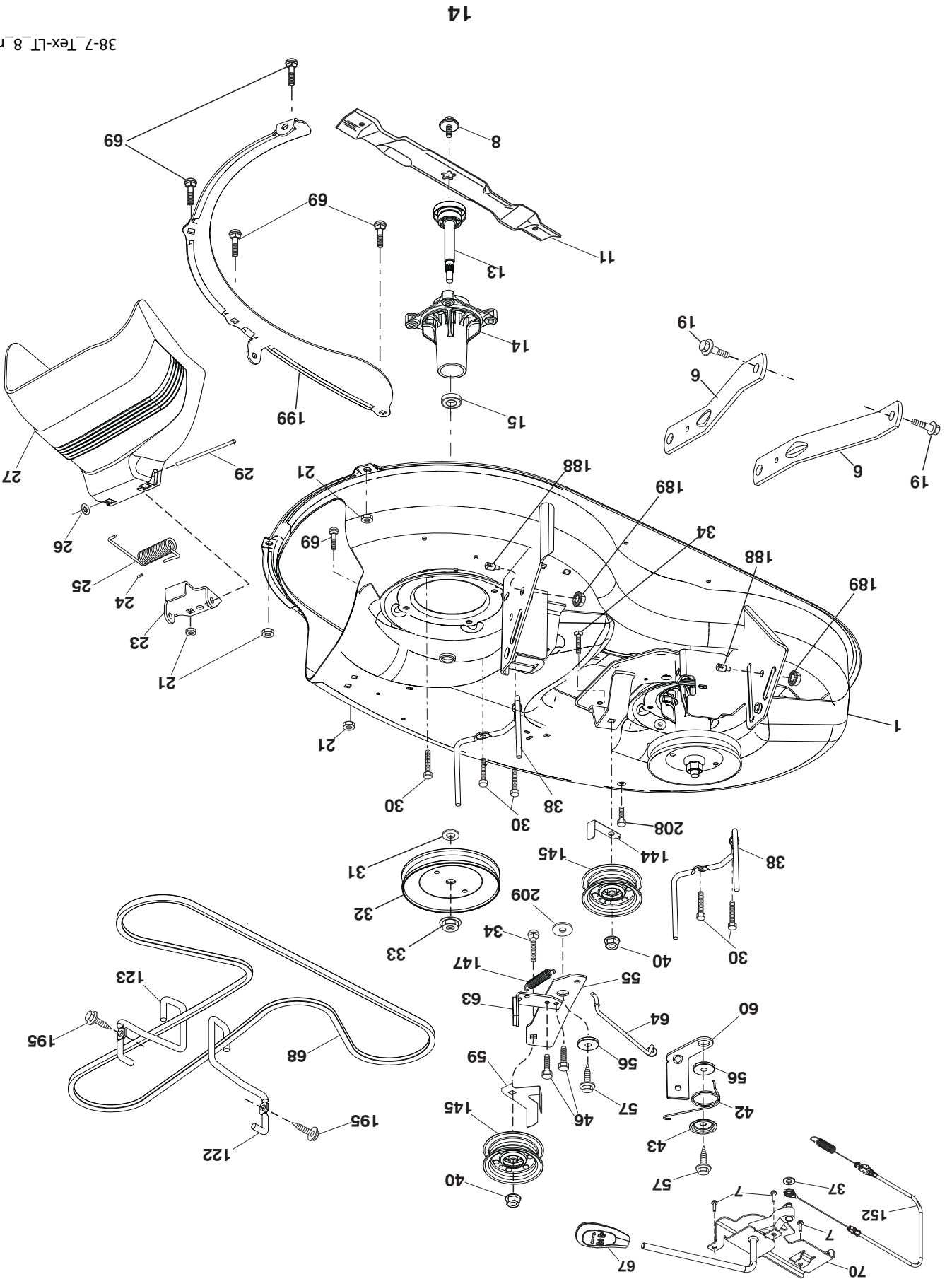
CARTER DE TONDEUSE

NO. DE REF. PIECE	DESCRIPTION	NO. DE REF. PIECE	DESCRIPTION
1	532 19 42-51	57	817 00 06-16
6	532 19 51-86	59	532 14 10-43
7	532 41 63-58	60	532 19 94-71
8	532 19 30-03	63	532 19 94-70
11	532 19 39-57	64	532 19 97-90
13	532 19 28-72	68	532 40 83-81
14	532 18 72-81	69	872 14 05-05
15	532 11 04-85	70	532 19 83-32
19	532 19 65-39	122	532 19 72-58
21	873 68 05-00	123	532 19 72-59
23	532 19 25-57	144	532 19 34-14
24	532 10 53-04	145	532 19 31-97
25	532 19 70-26	147	532 40 18-72
26	532 11 04-52	152	532 43 51-11
27	532 19 39-68	188	532 19 51-61
29	532 17 14-91	189	873 90 05-00
30	532 17 39-84	195	817 00 06-12
31	532 18 76-90	199	532 40 00-95
32	532 19 97-89	208	817 67 06-08
33	532 40 02-34	209	819 13 32-10
34	872 11 06-12	--	532 19 28-70
37	819 13 13-16	--	532 43 32-70
38	532 19 95-41		
40	873 90 06-00		
42	532 19 84-10		
43	532 19 72-56		
46	532 13 77-29		
55	532 19 72-49		
56	532 19 90-92		

REMARQUE: Toutes les dimensions de composant sont données en pouces E.-U. -- 1 pouce = 25,4 mm.

57 817 00 06-16 Vis 3/8-16 x 1
 59 532 14 10-43 Garde Idler
 60 532 19 94-71 Tondeuse à bras de frein
 63 532 19 94-70 Tondeuse à bras de frein
 64 532 19 97-90 Le lien de frein
 68 532 40 83-81 Courroie trapézoïdale
 69 872 14 05-05 Boulon
 70 532 19 83-32 Embrayage manuel de montage
 122 532 19 72-58 Guide-courroie du moteur C.G.
 123 532 19 72-59 Guide-courroie du moteur C.D.
 144 532 19 34-14 Guide-courroie
 145 532 19 31-97 Poulie de renvoi
 147 532 40 18-72 Ressort
 152 532 43 51-11 Manuel du câble d'embrayage
 188 532 19 51-61 Fixation à goujon
 189 873 90 05-00 Ecrou
 195 817 00 06-12 Vis 3/8-16 x 3/4
 199 532 40 00-95 Dérouter
 208 817 67 06-08 Vis 3/8-16 x 1/2
 209 819 13 32-10 Rondelle 13/32 x 2 x 10
 -- 532 19 28-70 Ensemble du mandrin (inclut boîtier, ensemble arbre, et palier seulement - poulie/ecrou/rondelle et lame, boulon/rondelle ne pas inclut)
 -- 532 43 32-70 Remplacer Tondeuse

TRACTEUR - NO DE MODÈLE PO14538LT (96048002200), NO. DE PRODUIT 960 48 00-22
CARTER DE TONDEUSE



14

38-7_Tex-LT_8_r1

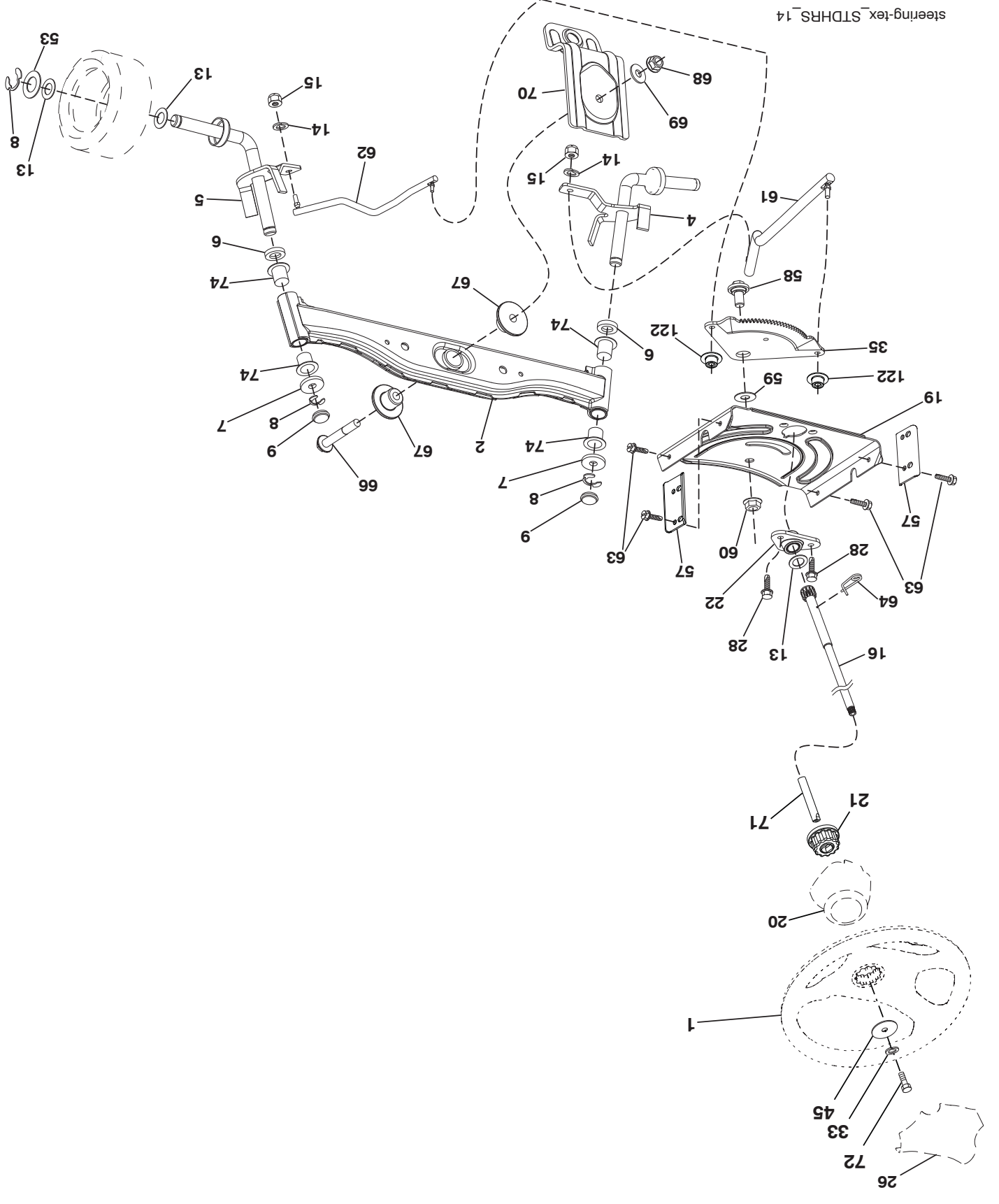
TRACTEUR - NO DE MODÈLE PO14538LT (96048002200), NO. DE PRODUIT 960 48 00-22
ENSEMBLE DE LA DIRECTION

NO. DE DÉF.	NO. DE REF. PIÈCE	DESCRIPTION
1	532 42 45-43	Volant de direction
2	532 41 81-68	Ensemble d'essieu antérieur
4	532 40 30-87	Ensemble de broche C.G.
5	532 40 30-88	Ensemble de broche C.D.
6	532 12 49-31	Rondelle 0.75 x 1.23
7	532 12 17-48	Rondelle 25/32 x 1-5/8 x 16 Ja.
8	812 00 00-29	Pince #T5304-75
9	532 12 12-32	Capuchon De Broche
13	532 12 17-49	Rondelle 25/32 x 1-1/4 x 16 Ja.
14	810 04 06-00	Rondelle 3/8
15	873 54 06-00	Écrou 3/8-24 unf
16	532 42 93-74	Arbre De Direction
19	532 19 47-29	Plaque De Direction
20	532 41 12-91	Bote De Direction
21	532 18 67-37	Adaptateur du volant de direction
22	532 42 05-37	Support
26	532 42 46-91	Insert de chapeau du volant de direction
28	817 00 06-12	Vis 3/8-16 x 3/4
33	810 04 05-00	Rondelle 5/16
35	532 19 47-32	Secteur Denté
45	819 11 38-12	Rondelle 11/32 x 2-3/8 x 12 Ja.
53	532 18 89-67	Rondelle .793 x 1.637 x .060
57	532 40 74-65	Support
58	532 19 47-47	Boulon
59	532 19 47-48	Rondelle
60	873 97 10-00	Écrou 5/8-11
61	532 19 47-40	Barre De Direction C.G.
62	532 19 47-41	Barre De Direction C.D.
63	817 00 05-12	Vis 5/16-18 x 3/4
64	532 19 98-49	Pince D'Arrêt
66	871 02 07-48	Boulon 7/16-14 x 3
67	532 19 47-37	Coussinet
68	873 90 07-00	Écrou 7/16-14 Cat. 5
69	532 19 91-62	Rondelle 1.5 x .505 x .118
70	532 19 61-97	Support
71	532 19 07-52	Arbre De Rallonge De Direction
72	532 42 89-82	Boulon 5/16-18 x 4
74	532 12 49-37	Palier
122	532 44 49-62	Chapeau

REMARQUE: Toutes les dimensions de composant sont données en pouces E.-U. -- 1 pouce = 25,4 mm.

TRACTEUR - NO DE MODÈLE PO14538LT (96048002200), NO. DE PRODUIT 960 48 00-22

ENSEMBLE DE LA DIRECTION



NO. DE REF. DE PIÈCE	DESCRIPTION
1	Moteur Briggs Model No. 31A507-1516-B1 (438749)

2	Silencieux
9	Guide Courroie Du Moteur
12	Pouille
15	Réservoir d'essence 1.5
18	Bouchon de réservoir d'essence
20	Commande Des Gaz
21	Vis #10 x 0.750
28	Conduite d'essence
29	Pare-Étincelles
37	Bride de serrage du tuyau
42	Rondelle 7/16
45	Écrou 1/4-20 unc
69	Garniture
79	Vis 5/16 - 18 x .75
84	Vis 3/8-16 x 1-1/4
85	Boulon 7/16-20 x 4 Cat. 5-1.5
90	Vis 3/8-16 x 1
96	Rondelle 9/32 x 7/8 x 16 Ja.
97	Vis 1/4-20 x 3/4
122	Bec de vidange d'huile
138	Ligne de purge

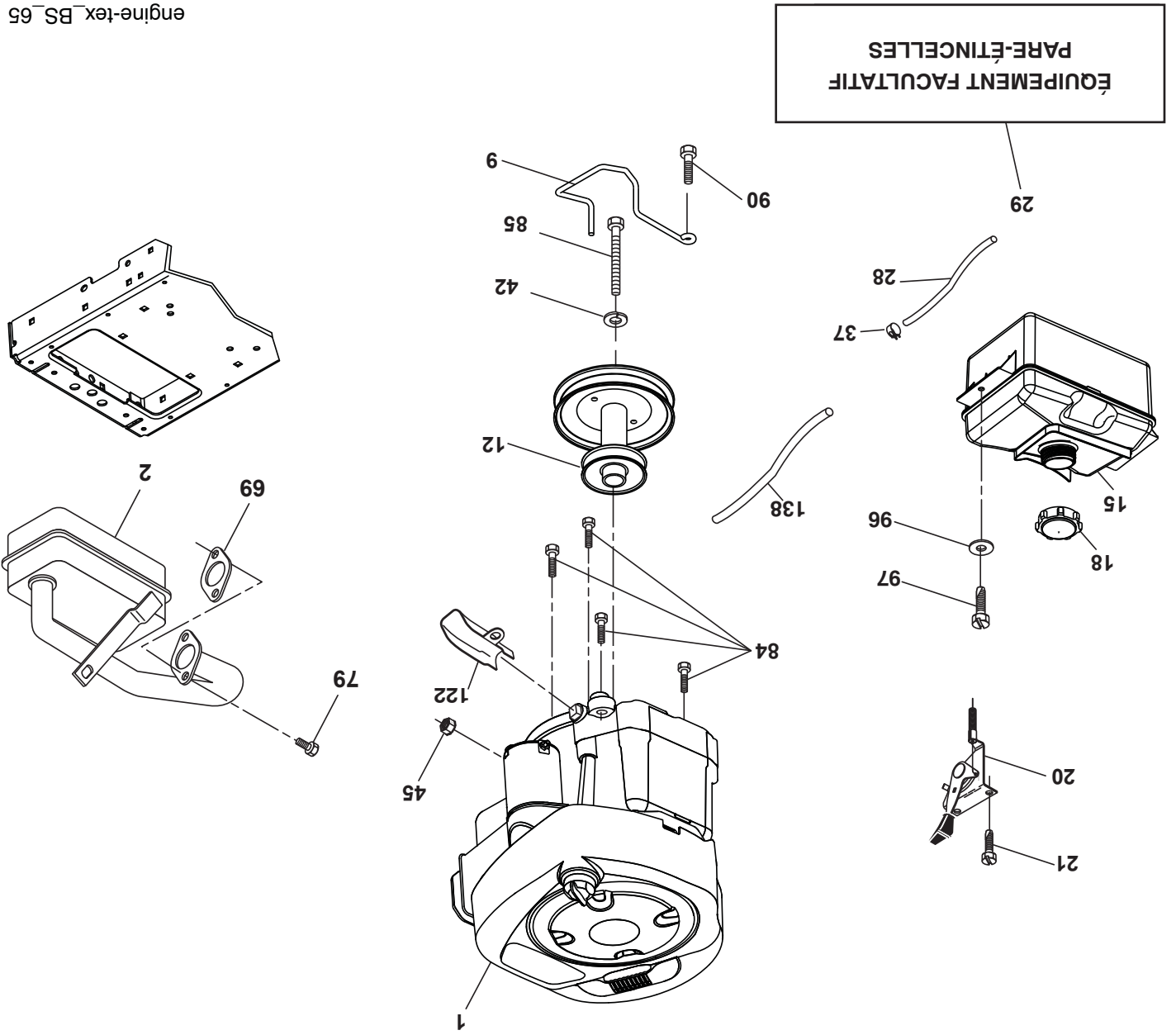
REMARQUE: Toutes les dimensions de composant sont données en pouces E.-U. — 1 pouce = 25,4 mm.

Pour des pièces de service et de rechange de moteur, réclamez le numéro de téléphone libre pour votre fabricant de moteur énuméré ci-dessous:

Briggs & Stratton 1-800-233-3723

Informations concernant la puissance théorique du moteur

La puissance brute pour chaque Modèle de moteur à essence est indiquée conformément au code J1940 (procédure de calcul de la puissance et du couple des petits moteurs) de la SAE (Society of Automotive Engineers) et les performances théoriques ont été obtenues et corrigées selon SAE J1995 (révision 2002-05). Les valeurs de couple sont calculées sur la base de 3060tr/min et celles de puissance sur la base de 3600tr/min. La puissance brute réelle du moteur peut être plus faible notamment à cause des conditions de fonctionnement et des variations d'un moteur à l'autre. Compte tenu de la grande variété de machines sur lesquelles nos moteurs sont utilisés et du nombre de problèmes environnementaux appliqués au fonctionnement des équipements, il se peut que le moteur à essence ne développe pas sa puissance théorique une fois qu'il est monté sur une machine particulière (puissance nette ou réelle « sur site »). Cette différence s'explique par un grand nombre de facteurs, tels que (liste non limitative): accessoires (filtre à air, échappement, admission, refroidissement, carburateur, pompe à essence, etc.); limites d'utilisation, conditions ambiantes d'utilisation (température, humidité, altitude) et variations d'un moteur à l'autre. Pour des raisons de fabrication et de capacité limitées, Briggs & Stratton est susceptible de remplacer ce Modèle par un moteur plus puissant.



TRACTEUR - NO DE MODÈLE PO14538LT (96048002200), NO. DE PRODUIT 960 48 00-22

ENTRAINMENT

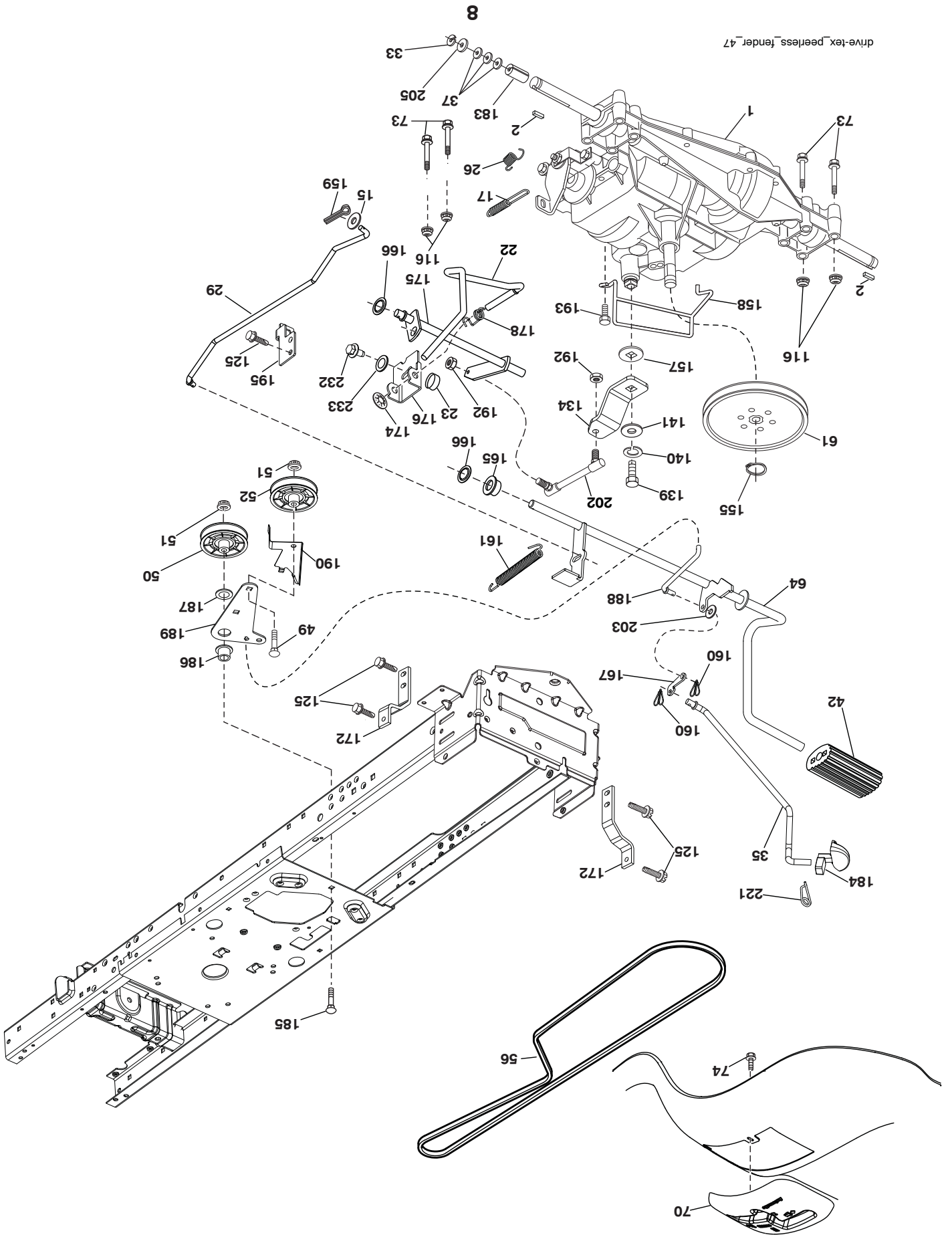
NO. NO	DE	REF.	DESCRIPTION	NO. NO	DE	REF.	DESCRIPTION
1	---	---	Transmission, Peerless 206-565 (430731) (Commandez Les Pièces Du Fabricant Du Transmission.)	157	532	10 57-01	Rondelle
2	532	12 35-83	Ciê	155	812 00 00-28		Bague De Fermeture
15	819 13 13-16		Rondelle 13/32 X 13/16 X 16 Ja.	141	819 09 12-10		Rondelle 9/32 X 3/4 X 10 Ja.
17	532 19 72-97		Ressort De Rappel Du Frein	140	810 04 04-00		Rondelle Lock Hvy Helical 1/4
22	532 19 76-60		Tige Du Changement De Vitesse	139	874 55 04-12		Boulon 1/4-20 Unt Cat. 8
23	532 10 69-33		Bouton	134	532 19 78-57		Bras D'embrayage
26	532 19 74-55		Ressort	125	817 00 05-12		Vis 5/16-18 X 3/4
29	532 19 72-67		Tige	116	873 90 05-00		Ecrou 5/16-18
33	812 00 00-01		Anneau "E"	74	532 14 24-32		Vis 1/4 X 1/2
35	532 19 77-22		Tige Frein De Stationnement	73	874 49 05-40		Boulon 5/16-18 Cat. 5
37	532 12 47-49		Rondelle 25/32 X 1-1/4 X 16 Ja.	70	532 41 12-90		Console
42	532 12 48-72		Couverture De La Pédale	64	532 19 62-00		Ensemble De L'arbre
49	872 11 06-14		Boulon	61	532 12 36-66		Pouille
50	532 19 43-27		Pouille	56	532 19 43-46		Courroie D'entraînement
51	873 90 06-00		Ecrou 3/8-16	52	532 19 43-26		Galet-Tendeur
52	532 19 43-26		Galet-Tendeur	51	873 90 06-00		Ecrou 3/8-16
55	532 19 43-46		Courroie D'entraînement	50	532 19 43-27		Pouille
56	532 12 36-66		Pouille	49	872 11 06-14		Boulon
61	532 12 36-66		Pouille	42	532 12 48-72		Couverture De La Pédale
64	532 19 62-00		Ensemble De L'arbre	37	532 12 47-49		Rondelle 25/32 X 1-1/4 X 16 Ja.
70	532 41 12-90		Console	35	532 19 77-22		Tige Frein De Stationnement
73	874 49 05-40		Boulon 5/16-18 Cat. 5	33	812 00 00-01		Anneau "E"
74	532 14 24-32		Vis 1/4 X 1/2	29	532 19 72-67		Tige
116	873 90 05-00		Ecrou 5/16-18	26	532 19 74-55		Ressort
125	817 00 05-12		Vis 5/16-18 X 3/4	23	532 10 69-33		Bouton
134	532 19 78-57		Bras D'embrayage	22	532 19 76-60		Tige Du Changement De Vitesse
139	874 55 04-12		Boulon 1/4-20 Unt Cat. 8	17	532 19 72-97		Ressort De Rappel Du Frein
140	810 04 04-00		Rondelle Lock Hvy Helical 1/4	15	819 13 13-16		Rondelle 13/32 X 13/16 X 16 Ja.
141	819 09 12-10		Rondelle 9/32 X 3/4 X 10 Ja.	2	532 12 35-83		Ciê
155	812 00 00-28		Bague De Fermeture				
157	532 10 57-01		Rondelle				

REMARQUE: Toutes les dimensions de composant sont données en pouces E.-U. -- 1 pouce = 25,4 mm.

NO. NO	DE	REF.	DESCRIPTION
158	532	19 43-52	Guide
159	876 02 04-12		Goupille Fendue 1/8 X 3/4
160	532 16 94-84		Pince D' Arrêt, Collier De Retenue
161	532 10 57-09		Rappel De Rappel D'embrayage
165	532 19 62-12		Coussinet
166	532 42 91-64		Ecrou .625
167	532 40 52-57		Loquet
172	532 19 76-57		Attache De Torsion
174	532 19 72-89		Ecrou
175	532 19 78-58		Bras D'embrayage
176	532 19 62-14		Bras du Tige D'embrayage
178	532 19 74-56		Ressort D'embrayage
183	532 13 70-57		Essieu D'entretoise
184	532 44 15-04		Guidon frien
185	872 11 06-22		Boulon
186	532 19 43-21		Entretoise
187	819 13 32-10		Rondelle
188	532 19 43-23		Raccord
189	532 19 43-17		Levier Coude
190	532 19 43-18		Guidon Levier Coude
192	532 15 03-60		Ecrou 1/4-28
193	817 06 05-12		Vis 5/16-18 X 3/4
195	532 19 73-32		Support
202	532 19 78-59		Raccord
203	819 11 11-16		Rondelle 11/32 X 11/16 X 16 Ja.
205	532 12 17-48		Rondelle 25/32 X 1-5/8 X 16 Ja.
221	532 40 31-87		Pince
232	874 78 07-16		Boulon 7/16-14 X 1 Cat. 5
233	532 40 52-96		Rondelle

TRACTEUR - NO DE MODÈLE PO14538LT (96048002200), NO. DE PRODUIT 960 48 00-22

ENTRAÎNEMENT



drive-tex_peartless_fender_47

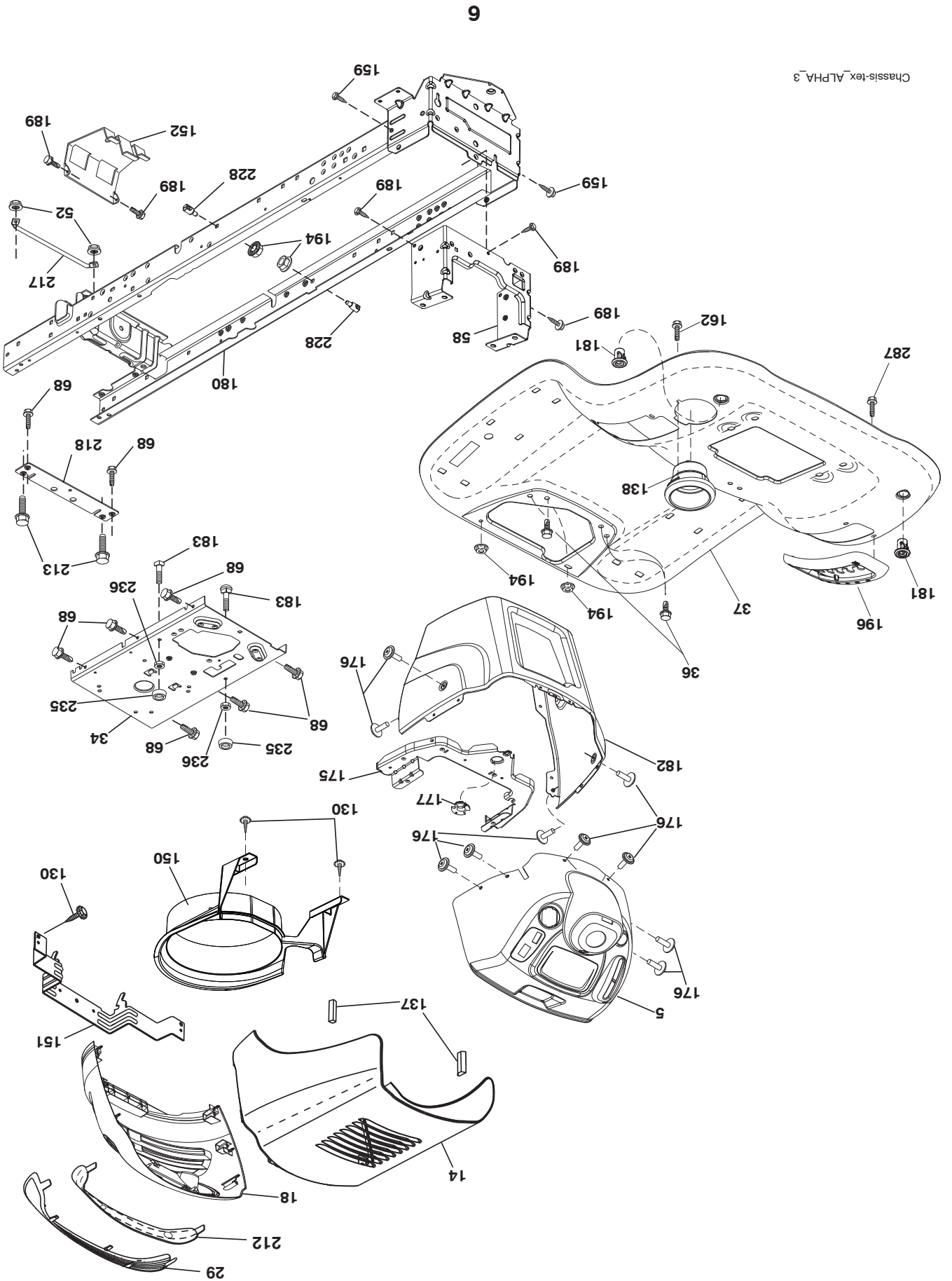
NO. NO
 DÉ DÉ
 RÉF. PIÈCE
 DESCRIPTION

5	532 41 17-64	Pare-Chocs
14	532 40 61-79	Capot
18	532 42 67-41	Calandre
29	532 19 54-02	Lentille
34	532 44 72-53	Plaque Du Motor
36	817 06 05-12	Vis 5/16-18 X 3/4
37	532 42 09-86	Aile
52	873 68 05-00	Ecrou 5/16-18
58	532 41 22-80	Barre D'attelage
68	817 49 05-08	Vis 5/16-18 X 1/2
130	532 41 63-58	Vis #10 X 0.750
137	532 18 49-21	Pare-Chocs
138	532 40 97-30	Godet
151	532 18 75-68	Support
152	532 19 95-35	Deflecteur
159	817 00 06-12	Vis.
162	532 14 24-32	Vis 1/4 X 1/2
175	532 19 32-43	Traverse Moyenne
176	532 40 07-76	Vis 10-24 X 5/8
177	532 19 52-28	Coussinet
180	532 41 50-63	Chassis
181	532 40 47-96	Coussinet
182	532 19 30-57	Tableau De Bord
183	874 52 05-20	Boulon 5/16-18 X 1-1/4
189	817 00 05-12	Vis 5/16-18 X 3/4
194	873 90 05-00	Ecrou 5/16-18
196	532 41 45-79	Ascenseur console de pont de l'Assemblée
212	532 18 75-69	Insert Lentille Réfléchissant
213	874 76 05-12	Boulon 5/16-18 X 3/4
217	532 40 91-67	Tige
218	532 19 63-95	X Pare-Chocs Arrêt
228	532 19 51-61	Attache A Tenon
235	532 40 61-29	Entrétoise De L'aille
236	873 93 05-00	Ecrou 5/16-18
287	817 60 04-06	Vis 1/4-20 X 3/8

REMARQUE: Toutes les dimensions de composant sont données en pouces E.-U. -- 1 pouce = 25,4 mm.

TRACTEUR - NO DE MODELE PO14538LT (96048002200), NO. DE PRODUIT 960 48 00-22

CHÂSSIS/ENCEINTES

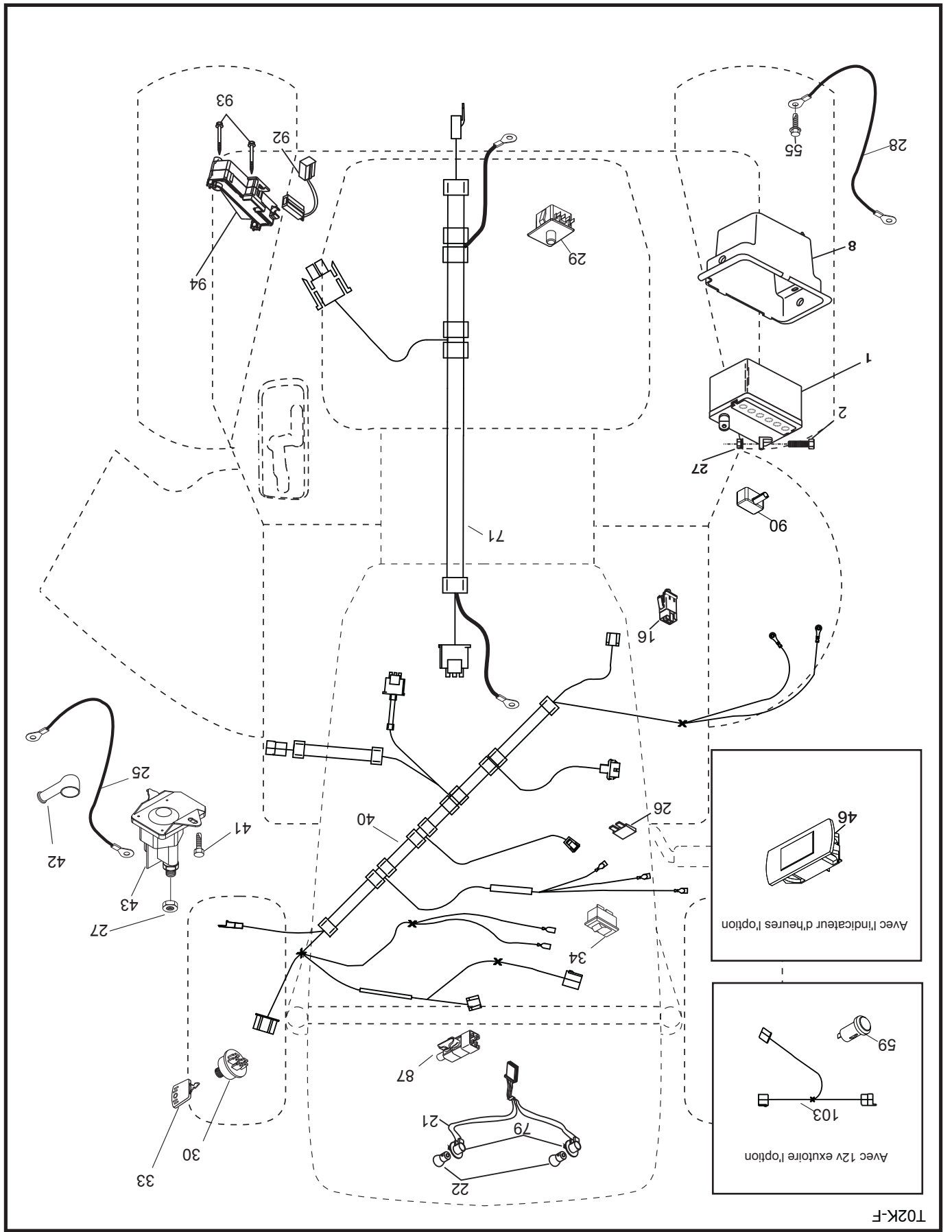


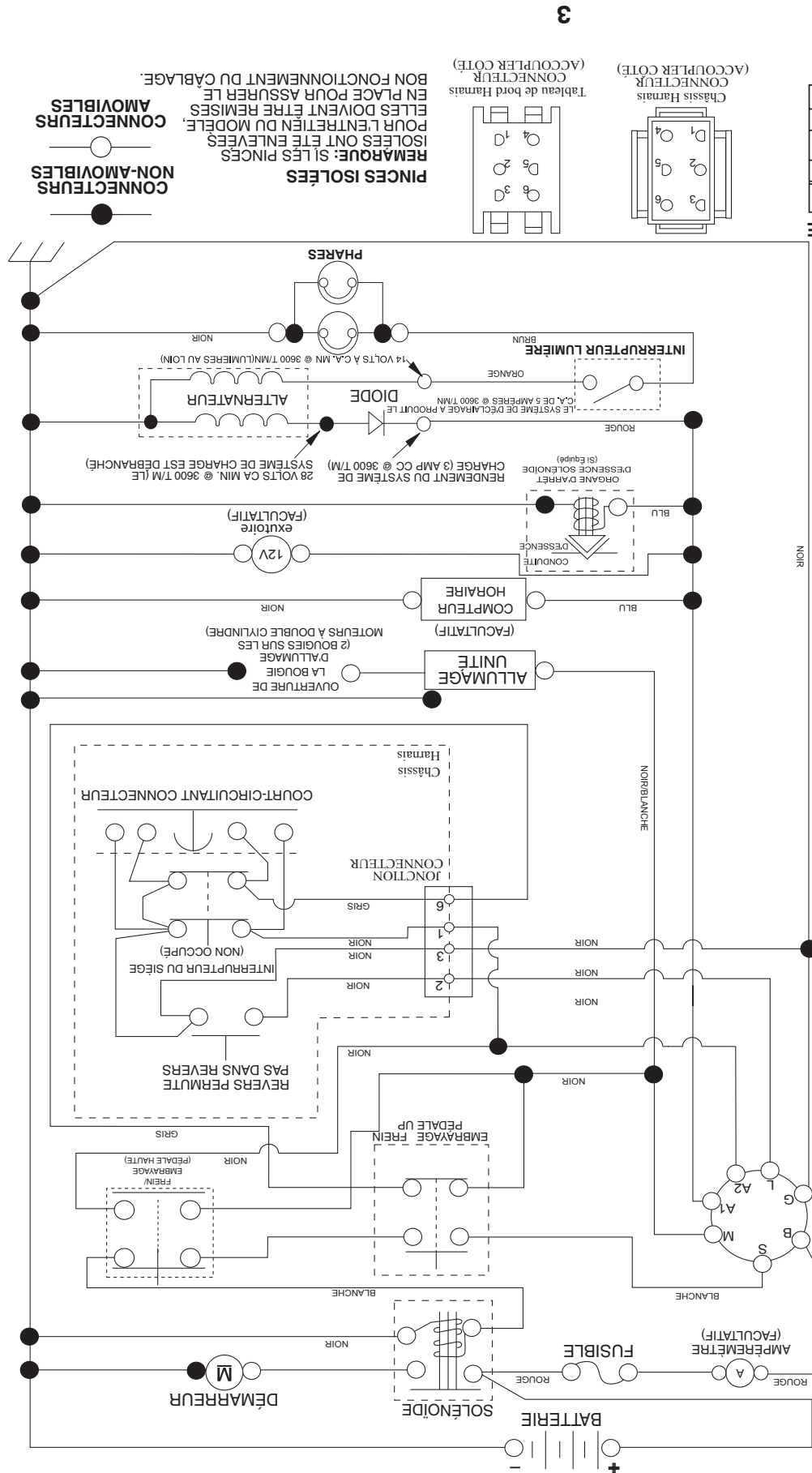
Chassis-tex ALPHA 3

NO. DE REF.	NO DE PIECE	DESCRIPTION
1	532 16 34-65	Batterie
2	874 76 04-12	Boulon 1/4-20 Unc X 3/4
8	532 19 32-28	Bac De Batterie
16	532 17 61-38	L'Interrupteur De Verrouillage
22	532 00 41-52	Ampoule
25	532 41 28-94	Câble 6 Ja.
26	532 17 51-58	Fusible
27	873 51 04-00	Écrou 1/4-20 Unc
28	532 19 88-85	Câble 22" 6 Ja.
29	532 19 27-49	Interrupteur Du Siège
30	532 19 33-50	Interrupteur Ign
33	532 41 19-35	Cle/Châin
34	532 11 07-12	Interrupteur des phares
40	532 40 10-98	Harnais
41	817 72 04-08	Vis 1/4-20 Unc X 1/2
42	532 13 15-63	Couverture
43	532 19 25-07	Solénoïde
55	817 06 05-12	Vis 5/16-18 X 3/4
71	532 44 15-44	Harnais
79	532 17 52-42	Prise de courant du phare
87	532 19 78-02	Interrupteur
90	532 43 53-95	Couverture
92	532 19 66-15	Harnais
93	532 19 25-40	Vis 10-14 X 2.0
94	532 19 18-34	Inverse Ros

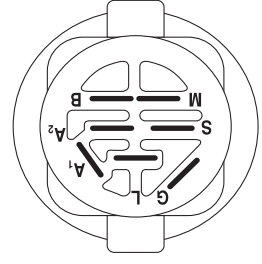
REMARQUE: Toutes les dimensions de composant sont données en pouces E.-U. -- 1 pouce = 25,4 mm.

T02K-F





CONTACTEUR D'ALLUMAGE



REMARQUE
 VOTRE TRACTEUR EST ÉQUIPÉ D'UN SYSTÈME D'ALTERNATEUR SPÉCIAL AU LIEU D'ÊTRE BRANCHÉS SUR LA BATTERIE, LES PHARES DISPOSENT DE LEUR PROPRE SOURCE D'ÉNERGIE ÉLECTRIQUE, DONC LA BRILLANCE DES PHARES CHANGERA EN FONCTION DE LA VITESSE DU MOTEUR, AU RALENTI, LA BRILLANCE DES PHARES BAISSERA: QUAND LE MOTEUR EST ACCÉLÉRÉ, LA BRILLANCE ATTEINDRA SON MAXIMUM.

NOIR

NOIR/BLANCHE

NOIR

NOIR

NOIR

BLANCHE

ROUGE

ROUGE

ROUGE

ROUGE

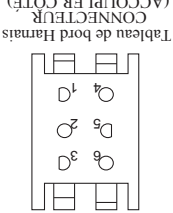
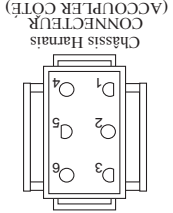
ROUGE

ROUGE

ROUGE

ROUGE

POSITION	CIRCUIT "FAITS"
ARRÊT	M + G + A1
MARCHE/ ALLUMAGE	B + A1
MARCHE	B + A1
DÉPARTAGE	B + S + A1



PINCES ISOLÉES
 REMARQUE: SI LES PINCES ISOLÉES ONT ÉTÉ ENLEVÉES, ELLES DOIVENT ÊTRE REMISES EN PLACE POUR ASSURER LE BON FONCTIONNEMENT DU CABLAGE.

CONNECTEURS NON-AMOVIBLES

CONNECTEURS AMOVIBLES

COMMENT UTILISER CE MANUEL

Ce manuel a été dessiné pour fournir le client avec les moyens d'identification des pièces de détails du tracteur quand il/elle a besoin de commander les pièces de rechange. Les illustrations ne peuvent pas représenter exactement le modèle que vous avez acheté. N'utilisez pas ce manuel comme un guide dans le montage et/ou démontage de votre tracteur. La visserie montrée est plus grande pour faciliter l'identification.

Chaque tracteur a un numéro de modèle particulier.

Le numéro de modèle du produit se trouvera sur l'aile, dessous le siège.

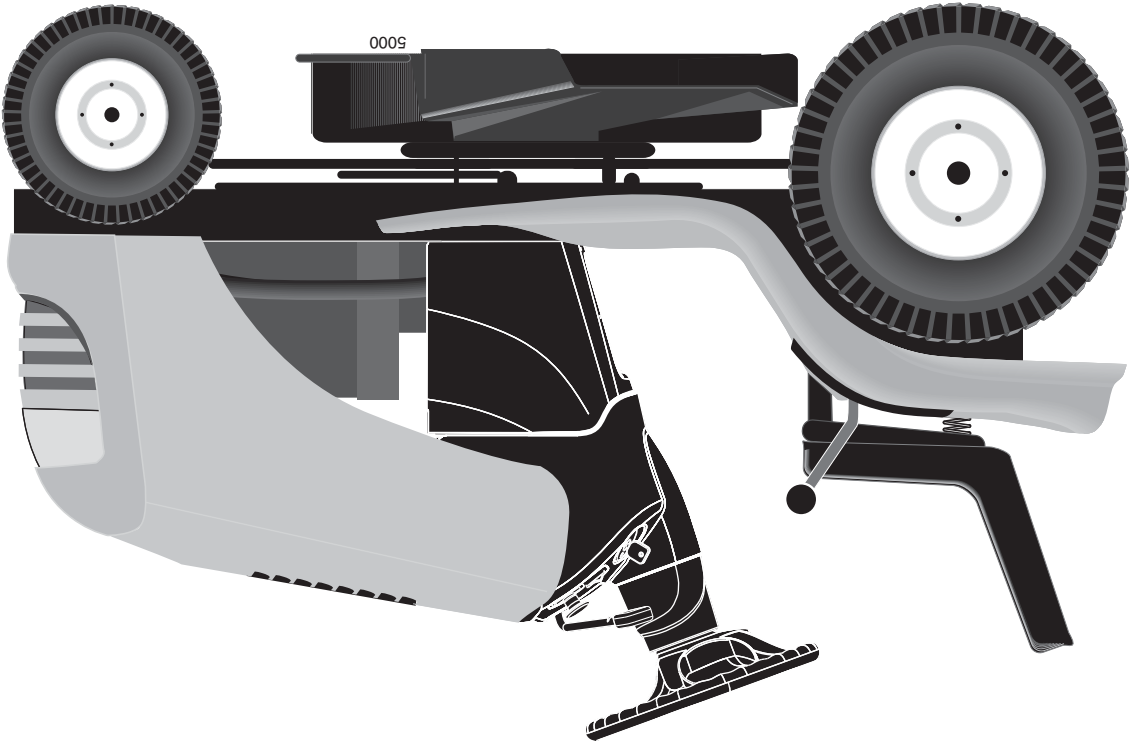
Lorsque vous commandez des pièces de rechange, donnez toujours les renseignements suivants:

- Produit - "TRACTEUR"
- NUMÉRO DU MODÈLE - "PO14538LT (96048002200)"
- Numéro de la Pièce
- Description de la Pièce

TABLE DE MATIERES

SCHEMA.....	3
ELECTRIQUE.....	4-5
CHASSIS/ENCEINTES.....	6-7
ENTRAÎNEMENT.....	8-9
MOTEUR.....	10-11
ENSEMBLE DE LA DIRECTION.....	12-13
CARTER DE TONDEUSE.....	14
LEVAGE DE LA TONDEUSE.....	18
ENSEMBLE DU SIÈGE.....	15
DECALCOMANIES.....	16-17
GARANTIE.....	19
L'ENTRETIEN ET LES PIÈCES DE RECHANGE.....	20

Poulan



MANUEL DES PIÈCES DE RECHANGE

MODÈLE:

PO14538LT

TRACTEUR DE PELOUSE

PORTEZ TOUJOURS DES LUNETTES DE SÉCURITÉ LORS DE L'UTILISATION.

Visitez notre site web : www.poulan.com

532 44 67-62

02.06.12 BD
Imprimé Aux E.-U.

AVERTISSEMENT:



Lisez soigneusement le Manuel suivez tous les Avertissements et les Instructions de Sécurité. Les blessures sérieuses peuvent en résulter si vous ne lisez pas ces Avertissements et Instructions de Sécurité.