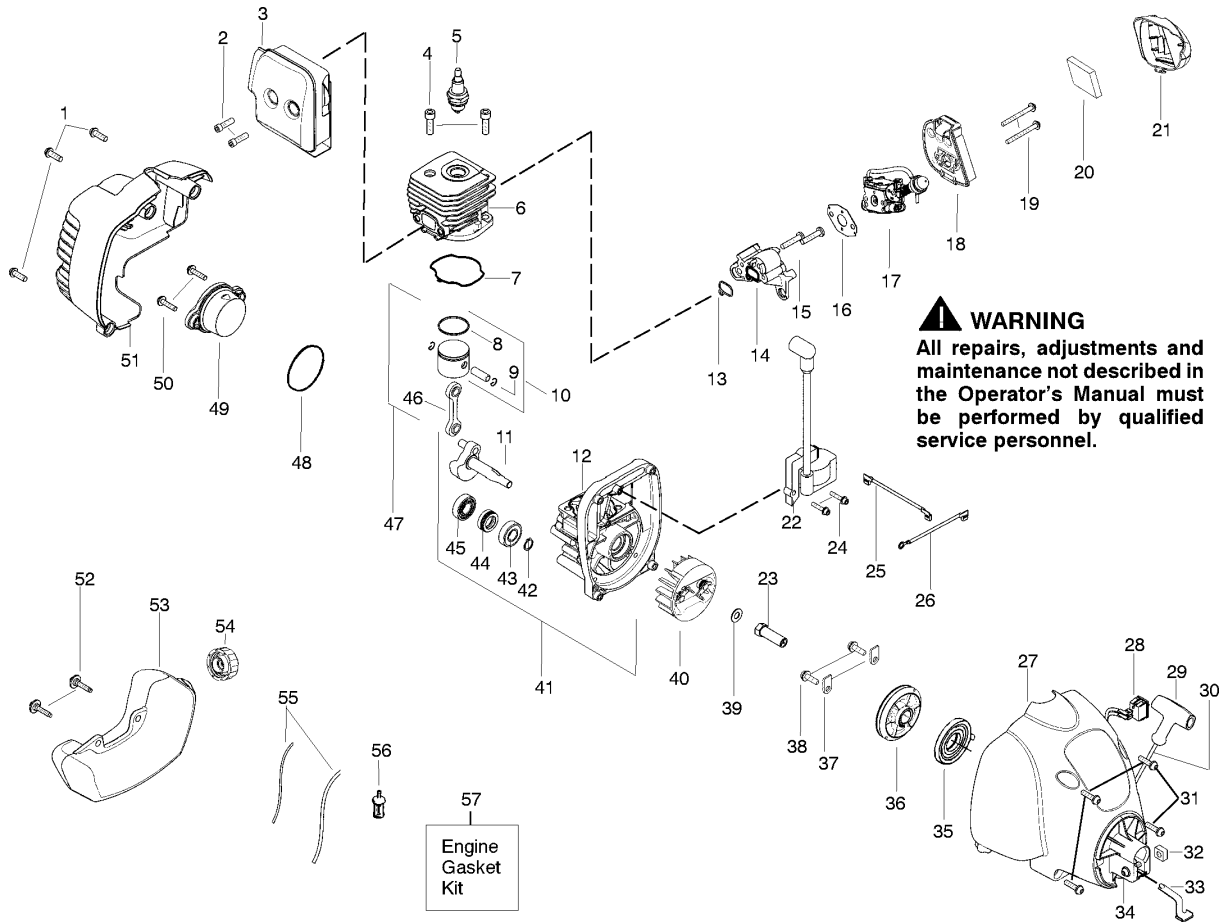




SPARE PARTS LIST

TRIMMERS/EDGERS

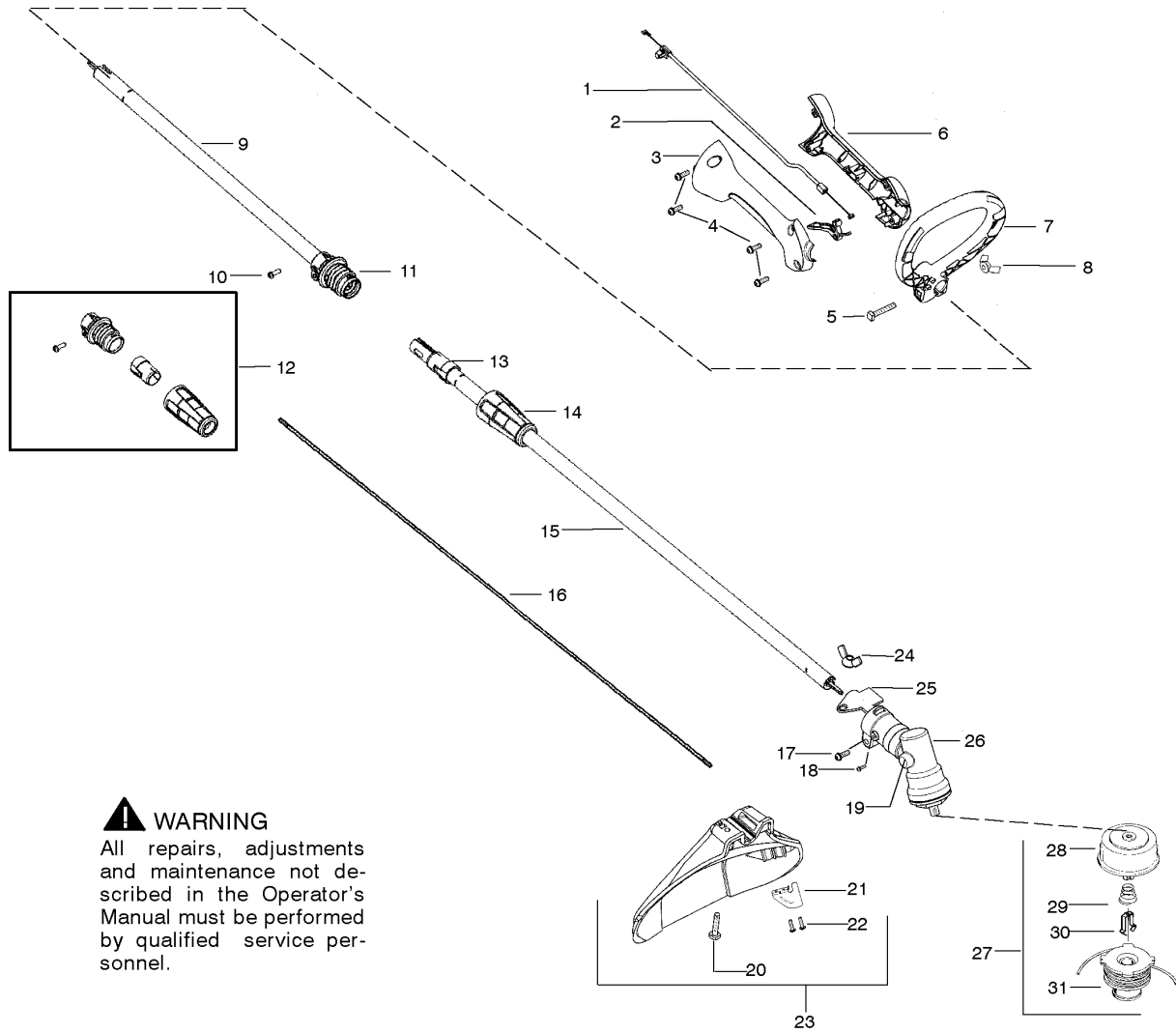
W25SBK, 2015-09



ENGINE

W25SBK, 2015-09

| Ref | Part No | Description | Remark | QTY KIT |
|-----|--------------|--------------------------|-----------------------|---------|
| 1 | 530 01 58-14 | SCREW | | 1 |
| 2 | 530 05 89-82 | BOLT | | 1 |
| 3 | 545 22 79-01 | ASSY MUFFLER/SHIELD | INCL #2 | 1 |
| 4 | 530 01 59-53 | SCREW | | 1 |
| 5 | 952 03 02-49 | SPARK PLUG | | 1 |
| 6 | 530 01 25-41 | CYLINDER | | 1 |
| 7 | 000 00 00-00 | W/O DESCRIPTION | REF #57 | 1 |
| 8 | 545 15 40-01 | PISTON RING | | 1 |
| 9 | 530 01 51-62 | CIRCLIP | | 1 |
| 10 | 530 07 13-57 | KIT PISTON | "INCL #8, 9" | 1 |
| 11 | 530 05 78-29 | CRANKSHAFT ASSY | | 1 |
| 12 | 530 01 25-82 | CRANKCASE | "INCL #43, 44, 45" | 1 |
| 13 | 000 00 00-00 | W/O DESCRIPTION | REF #57 | 1 |
| 14 | 530 05 75-47 | ADAPTER | | 1 |
| 15 | 530 01 64-41 | SCREW | | 1 |
| 16 | 000 00 00-00 | W/O DESCRIPTION | REF #57 | 1 |
| 17 | 577 13 59-02 | KIT | | 1 |
| 18 | 530 05 75-85 | BASE AIRBOX | | 1 |
| 19 | 530 01 64-28 | SCREW | | 1 |
| 20 | 530 05 77-81 | AIR FILTER | | 1 |
| 21 | 576 69 44-01 | COVER | | 1 |
| 22 | 578 28 70-01 | IGNITION MODULE | | 1 |
| 23 | 530 03 86-04 | DRIVE COUPLING | | 1 |
| 24 | 545 00 39-03 | SCREW | | 1 |
| 25 | 530 01 46-63 | CABLE | | 1 |
| 26 | 581 42 59-01 | WIRE ASSY | | 1 |
| 27 | 580 41 08-02 | HOUSING | | 1 |
| 28 | 545 08 18-69 | KIT SWITCH MOMENTARY | | 1 |
| 29 | 530 02 75-69 | STARTER HANDLE | | 1 |
| 30 | 530 07 17-98 | KIT | | 1 |
| 31 | 530 01 63-86 | SCREW | | 1 |
| 32 | 530 01 61-24 | NUT | | 1 |
| 33 | 530 05 75-88 | CLIP | | 1 |
| 34 | 530 01 64-30 | SCREW | | 1 |
| 35 | 545 05 49-01 | SPRING | | 1 |
| 36 | 545 05 04-07 | KIT | | 1 |
| 37 | 530 02 75-23 | RETAINER | | 1 |
| 38 | 530 01 62-24 | SCREW | | 1 |
| 39 | 530 01 58-28 | WASHER | | 1 |
| 40 | 530 05 41-15 | FLYWHEEL | | 1 |
| 41 | 530 07 17-68 | ASSEMBLY | "INCL #11, 12, 42" | 1 |
| 42 | 530 01 59-41 | CLIP | | 1 |
| 43 | 530 05 57-28 | BEARING | | 1 |
| 44 | 530 01 92-64 | SEAL | | 1 |
| 45 | 530 03 21-25 | BEARING | | 1 |
| 46 | 530 06 99-45 | CONNECTING ROD | | 1 |
| 47 | 530 07 17-85 | PISTON | "INCL #10, 46" | 1 |
| 48 | 000 00 00-00 | W/O DESCRIPTION | "REF #49, 57" | 1 |
| 49 | 530 05 79-54 | PLUG | INCL #48 | 1 |
| 50 | 530 01 63-86 | SCREW | | 1 |
| 51 | 545 01 10-04 | REAR COVER | | 1 |
| 52 | 530 01 64-45 | SCREW FUEL TANK RETAINER | | 1 |
| 53 | 581 26 37-01 | FUEL TANK ASSY | | 1 |
| 54 | 579 74 66-01 | FUEL CAP ASSY | | 1 |
| 55 | 000 00 00-00 | W/O DESCRIPTION | REF #53 | 1 |
| 56 | 530 09 56-46 | FILTER | | 1 |
| 57 | 530 07 17-50 | GASKET KIT | "INCL #7, 13, 16, 48" | 1 |



⚠ WARNING
All repairs, adjustments and maintenance not described in the Operator's Manual must be performed by qualified service personnel.

SHAFT & HANDLE

W25SBK, 2015-09

| Ref | Part No | Description | Remark | QTY | KIT |
|-----|--------------|-----------------------|--------|-----|-------------|
| 1 | 530 05 79-91 | ASSEMBLY | | 1 | |
| 2 | 530 05 80-00 | TRIGGER | | 1 | |
| 3 | 530 05 75-82 | THROTTLE HSG. (RIGHT) | | 1 | |
| 4 | 530 01 58-80 | SCREW | | 1 | |
| 5 | 530 01 58-21 | SCREW | | 1 | |
| 6 | 530 05 75-81 | HSG THROTTLE LH | | 1 | |
| 7 | 530 05 85-80 | HANDLE ASSY | | 1 | 5,8 |
| 8 | 530 01 61-52 | WING NUT | | 1 | |
| 9 | 545 00 80-59 | SHAFT | | 1 | 10,11 |
| 10 | 530 01 58-80 | SCREW | | 1 | |
| 11 | 581 53 50-01 | DRIVE SHAFT ASSY | | 1 | 10,13,14 |
| 12 | 581 53 50-01 | DRIVE SHAFT ASSY | | 1 | 10,11,13,14 |
| 13 | 581 53 50-01 | DRIVE SHAFT ASSY | | 1 | 10,11,14 |
| 14 | 581 53 50-01 | DRIVE SHAFT ASSY | | 1 | 10,11,13 |
| 15 | 581 49 49-03 | DRIVE SHAFT ASSY | | 1 | 13,14 |
| 16 | 545 20 67-01 | FLEX SHAFT ASSY | | 1 | |
| 17 | 530 01 60-14 | SCREW | | 1 | |
| 18 | 530 01 62-24 | SCREW | | 1 | |
| 19 | 575 72 45-01 | PLUG | | 1 | |
| 20 | 530 01 58-20 | SCREW | | 1 | |
| 21 | 530 05 22-85 | LIMITER CAP | | 1 | |
| 22 | 530 01 59-66 | SCREW | | 1 | |
| 23 | 530 07 17-71 | KIT SHIELD | | 1 | 20,21,22,24 |
| 24 | 530 01 61-52 | WING NUT | | 1 | |
| 25 | 530 09 60-67 | BRACKET | | 1 | |
| 26 | 530 09 60-68 | ASSY GEAR BOX, | | 1 | |
| 27 | 952 71 15-50 | TRIMMER HEAD | | 1 | 28,29,30,31 |
| 28 | 530 09 57-72 | ASSEMBLY | | 1 | |
| 29 | 530 05 32-41 | SPRING | | 1 | |
| 30 | 530 40 19-57 | RETAINER | | 1 | |
| 31 | 952 71 15-51 | SPOOL | | 1 | |