

Owner's Manual



ROTARY LAWN MOWER

5.5 Horsepower

21" Multi-Cut

Model No.

944.364541



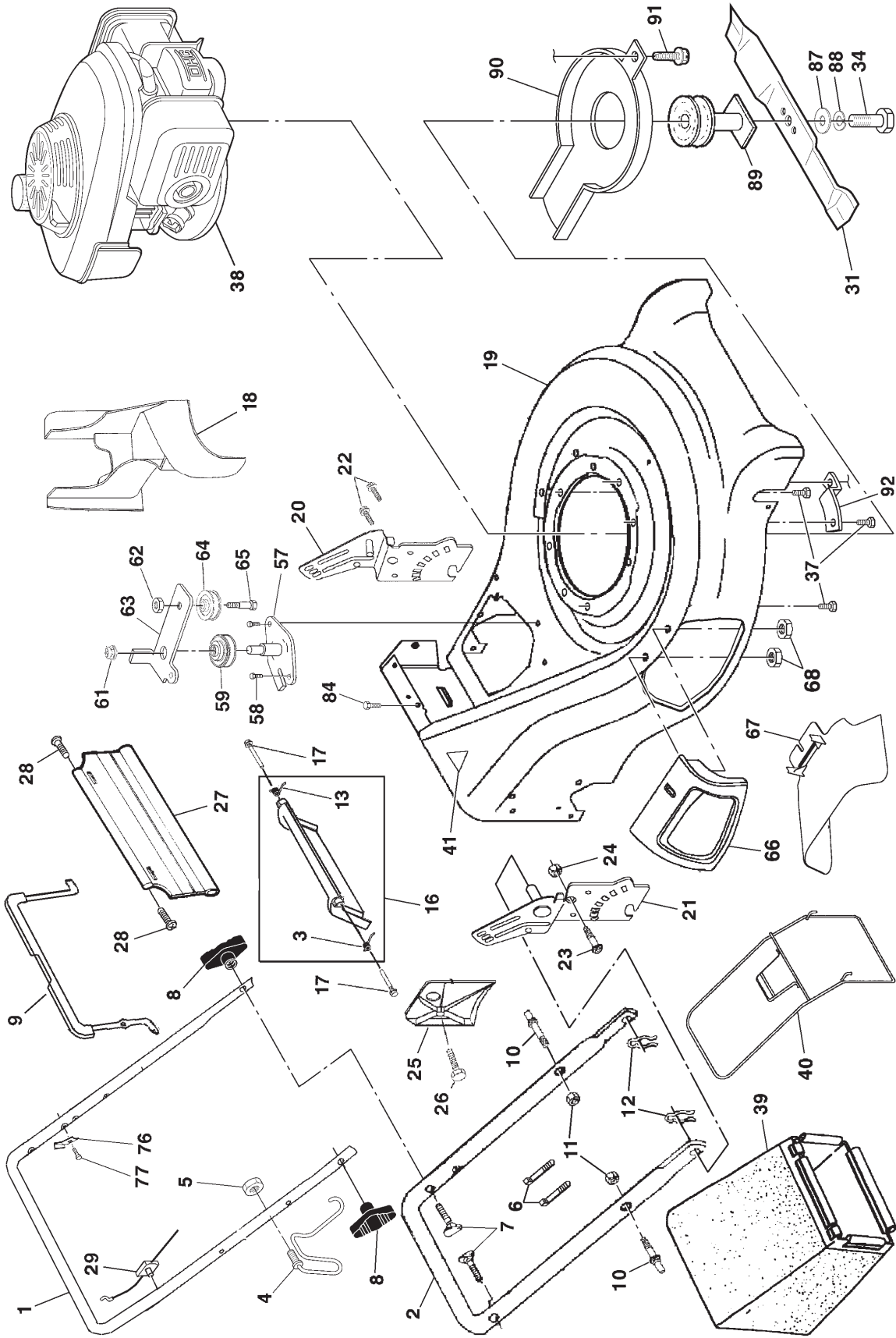
CAUTION:

Read and follow all
Safety Rules and Instructions
before operating this equipment

Sears Canada, Inc., Toronto, Ontario M5B 2B8

REPAIR PARTS

CRAFTSMAN ROTARY LAWN MOWER -- MODEL NUMBER 944.364541

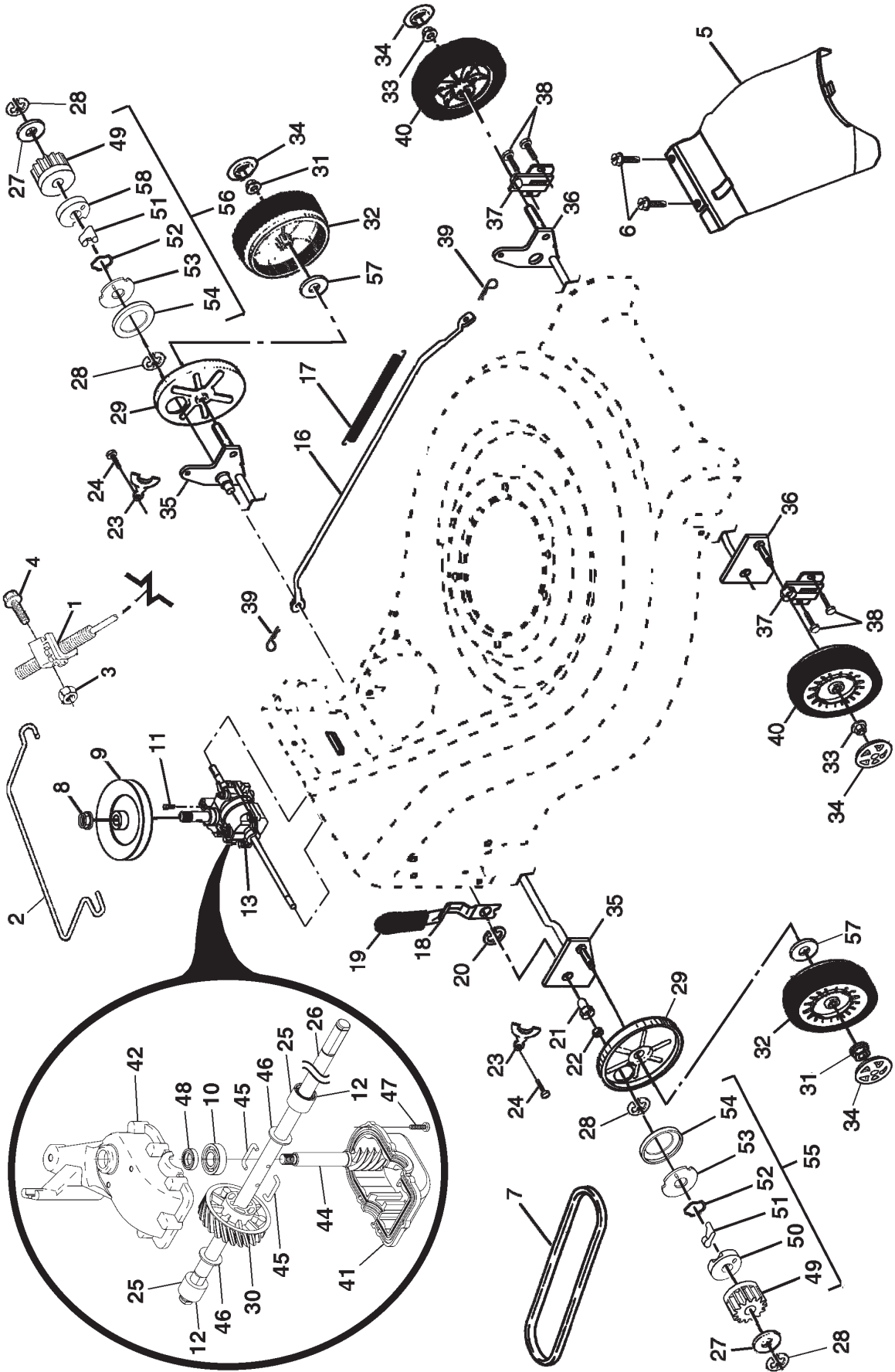


CRAFTSMAN ROTARY LAWN MOWER - - MODEL NUMBER 944.364541

KEY PART NO.	DESCRIPTION	KEY PART NO.	DESCRIPTION
1	189663X479 Handle, Upper	39	188816 Grassbag
2	161105X479 Handle, Lower	40	188817 Frame, Grassbag
3	186053 Spring, Rear Door, RH	41	107339X Danger Decal
4	186079 Rope Guide / Anti-Fold Bracket	57	179783X004 Bracket Assembly
5	132004 Nut, Hex, with Lockwasher Insert 1/4-20	58	57808 Screw
6	66426 Wire, Tie	59	184543 Pulley, V-Groove, Idler
7	191574 Bolt, Handle 5/16-18 x 2-5/8	61	145212 Flanged Nut
8	189713X428 Knob, Handle	62	155552 Locknut
9	182810 Control Bar	63	179719X004 Idler Arm
10	188821 Bolt, Carriage	64	166043 Idler Pulley
11	73930500 Nut, Hex, with Lockwasher Insert 5/16-18 UNC	65	160829 Shoulder Bolt
12	51793 Cotter, Hairpin	66	183058X428 Mulcher Door Assembly
13	186052 Spring, Rear Door, LH	67	169699X428 Discharge Guard
16	185855X428 Kit, Rear Door (Includes Springs)	68	88349 Nut, Hex
17	184193 Bolt, Rear Door	76	850733X004 Bracket, Upstop
18	187535 Plug, Mulcher	77	750634 Screw
19	181965 Kit, Housing	84	54583 Screw
20	187249X479 Handle Bracket Assembly, LH	87	851074 Washer
21	187250X479 Handle Bracket Assembly, RH	88	850263 Washer, Lock
22	150078 Screw, Hex Washer Head	89	189179 Blade Adapter / Pulley
23	163183 Bolt, Hex Head 5/16-18 x 5/8	90	188786 Debris Shield
24	73800500 Nut, Hex, with Lockwasher Insert 5/16-18	91	188040 Screw
25	161333 Baffle, Side	92	188839X004 Mounting Bracket, Debris Shield
26	163409 Screw #12 x 5/8	- -	162300 Warning Decal (not shown)
27	188986 Skirt, Rear	- -	192184 Owner's Manual, English
28	88652 Screw, Hinge 1/4-20 x 1.25	- -	192183 Owner's Manual, French
29	191221 Cable, Engine Zone Control		
31	189028 Blade, 21"		
34	851084 Bolt, Hex Head		
37	150406 Bolt, Engine		
38	--- Engine, Honda, Model Number GCV160-AS3A (See Breakdown)		

NOTE: All component dimensions given in U.S. inches.
1 inch = 25.4 mm

CRAFTSMAN ROTARY LAWN MOWER -- MODEL NUMBER 944.364541

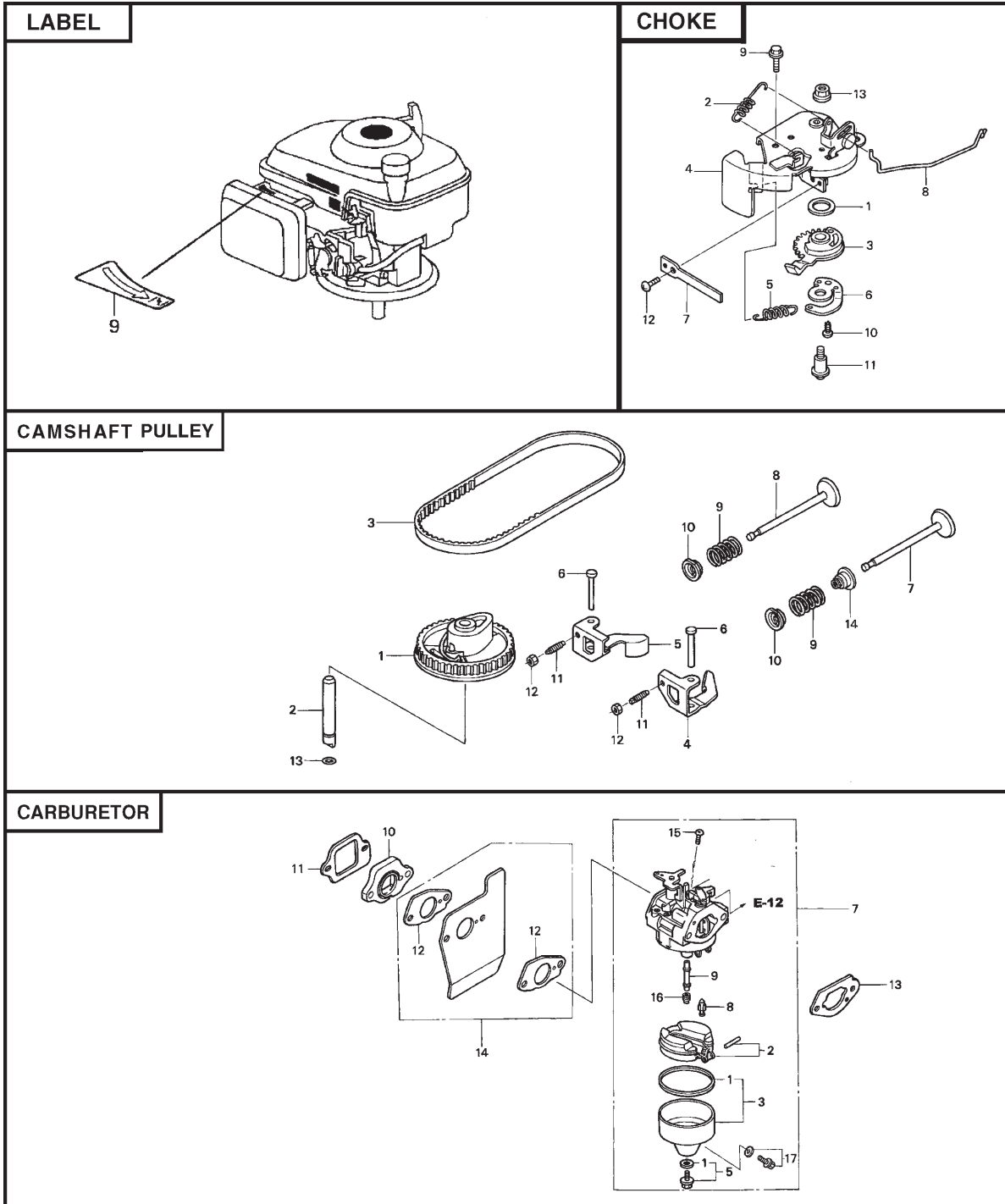


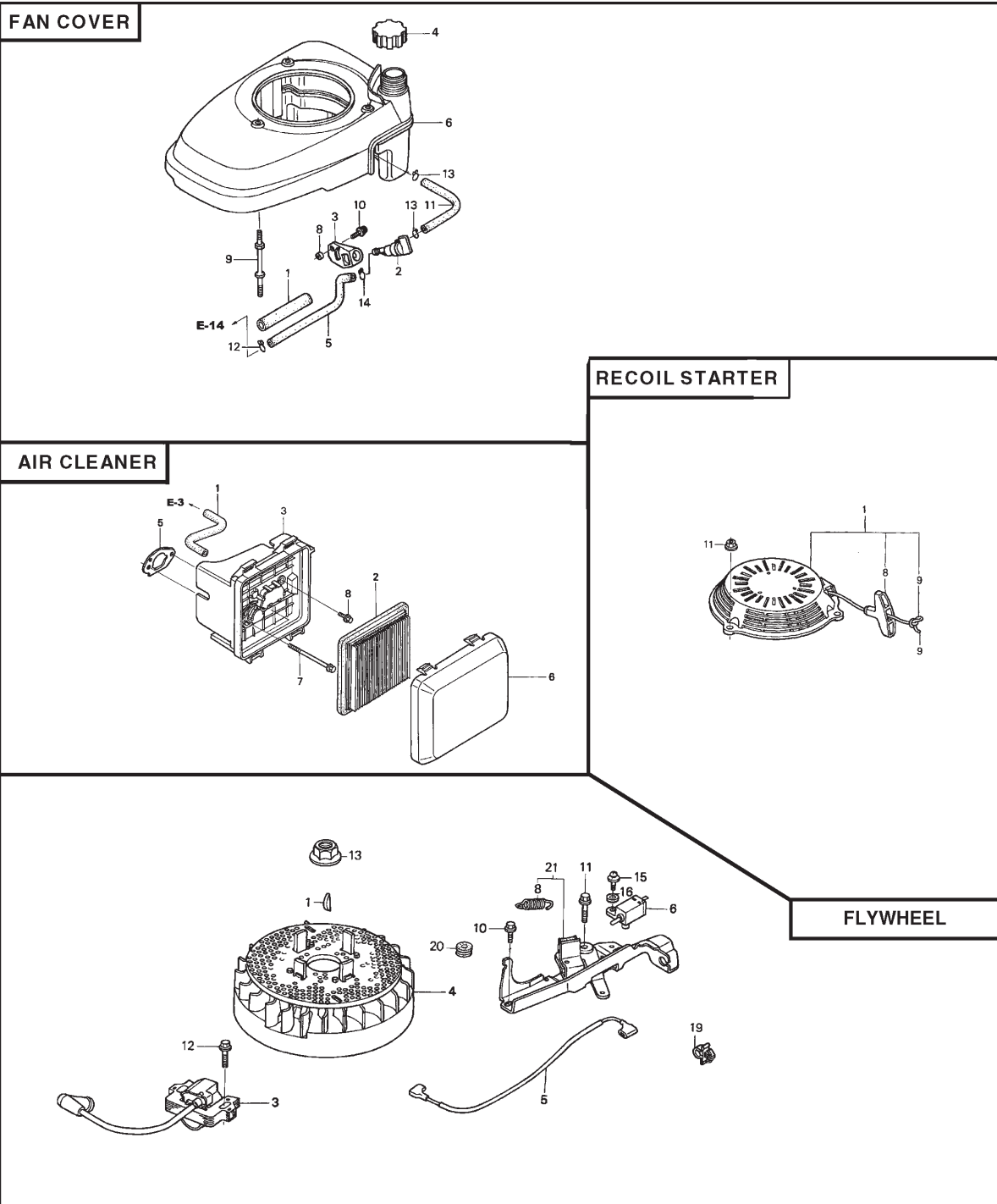
CRAFTSMAN ROTARY LAWN MOWER - - MODEL NUMBER 944.364541

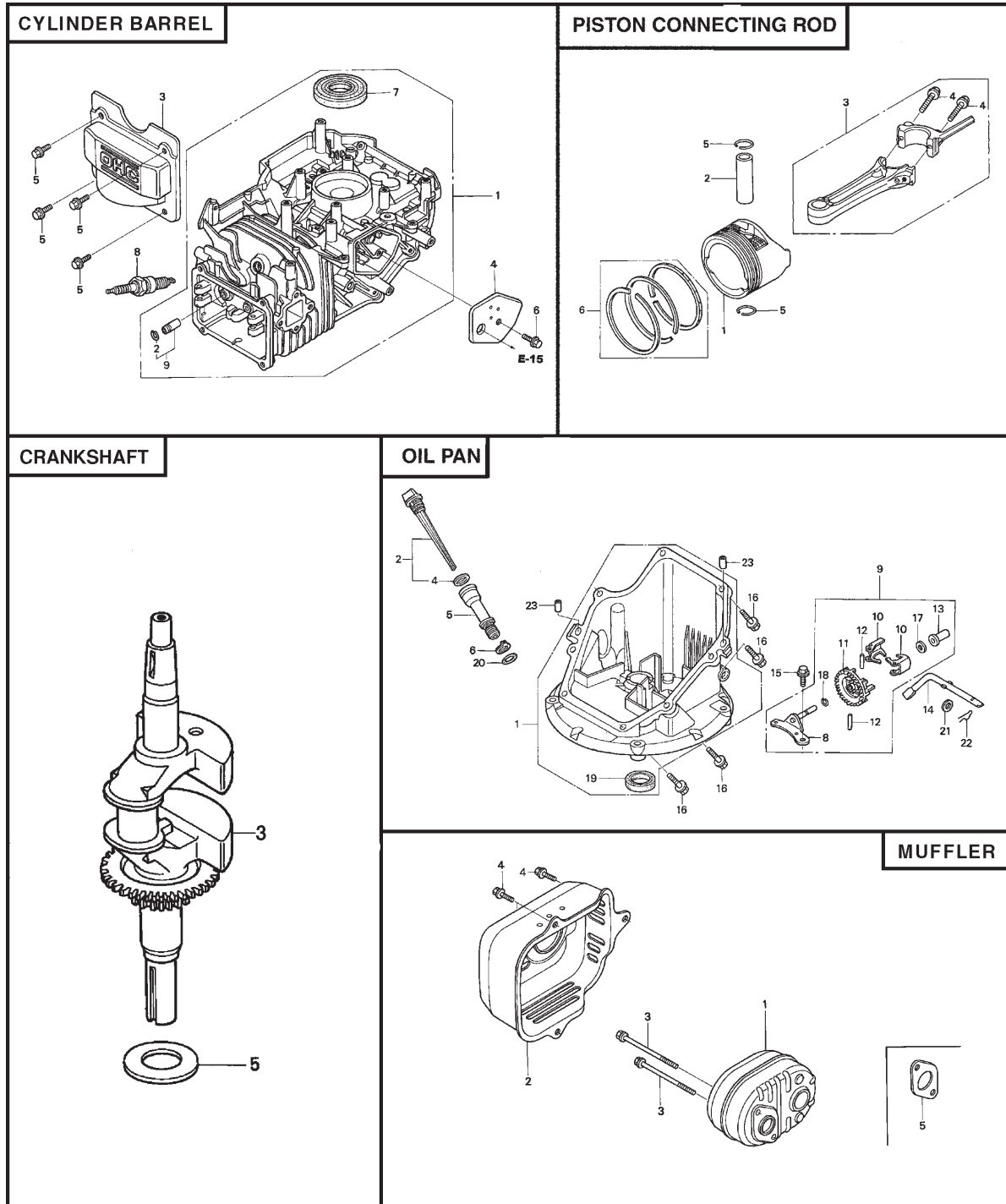
KEY PART NO. NO.	DESCRIPTION	KEY PART NO. NO.	DESCRIPTION
1	189181	32	180763
2	189952X428	33	83923
3	751152	34	180626
4	185681	35	189180X004
5	161537X428	36	160786X004
6	750634	37	161463
7	182212	38	163409
8	132010	39	700279
9	189408	40	172323
10	183506	41	187530
11	187653	42	187531
12	183508	44	187533
13	188645	45	183505
16	161584	46	183509
17	161602	47	183513
18	189953X004	48	183514
19	167650	49	175103
20	12000022	50	175102
21	163365	51	175098
22	169911	52	188291
23	161118X004	53	175104
24	57808	54	184172
25	183511	55	188330
26	191249	56	188331
27	52160	57	67725
28	12000058	58	175105
29	189403		
30	187532		
31	145212		
	Drive Control Assembly		Wheel 9 x 2
	Control Bar, Drive		Nut, Flangelock 3/8-16
	Nut, Hex		Hubcap, Mag, Platinum
	Screw		Shaft Assembly, Rear
	Cover Drive		Shaft Assembly, Front
	Screw, Threaded, Rolled #10-25 x .50		Retainer, Front Shaft
	V-Belt		Screw #12 x 5/8
	Nut, Flangelock, Zinc Plated 3/8-16		Clip, Retainer
	Pulley, Drive		Wheel 8 x 2
	Bearing, Ball		* Case, Lower
	Screw		* Case, Upper
	Seal, Output Shaft		Shaft, Input
	Gear Case Assembly, Complete		Wire, Formed
	Rod, Connecting		Washer
	Spring, Extension		Screw
	Spring, Selector		Seal, Input Shaft
	Knob, Selector Spring		Pinion, Gear
	E-Ring 7/8		Retainer, Drive, RH
	Bearing, Support		Pawl
	Bearing, Ball		Spring, Torsion
	Retainer, Drive Assembly		Disc, Drive
	Screw, Tapping, Hex Head 1/4-20 x .75		Seal, Friction
	Bushing		Pinion Assembly, RH
	Shaft, Output		Pinion Assembly, LH
	Washer, Shim (as required)		Washer
	E-Ring 7/16		Retainer, Drive, LH
	Cover, Dust, Wheel		
	Gear, 24 Teeth		
	Nut, Flangelock		

* Use Dow Corning #709 to reseal Gear Case Halves.

NOTE: All component dimensions given in U.S. inches.
1 inch = 25.4 mm







CHOKE

KEY NO.	PART NO.	DESCRIPTION
1	7257157	Seal, Choke Lever
2	4209581	Spring, Cable Return
3	7257165	Lever, Choke
4	7257173	Base Comp., Choke
5	7257181	Spring, Choke Lever
6	7257199	Hook, Choke Spring
7	7257207	Plate, Choke
8	7229867	Rod, Stop
9	0747733	Bolt, Flange #6 x 16
10	3674413	Screw, Tapping #4 x 8 (PO)
11	2544690	Screw, Pan Head #5 x 19
12	0369017	Screw, Pan Head #4 x 8
13	0636951	Nut, Flange 5 mm

CAMSHAFT PULLEY

KEY NO.	PART NO.	DESCRIPTION
1	7049679	Pulley Comp., Camshaft
2	5580063	Shaft, Cam Pulley
3	7058985	Belt, Timing (84HU7 G-200)
4	5580089	Rocker Arm, Intake Valve
5	5580097	Rocker Arm, Exhaust Valve
6	5580105	Shaft, Rocker Arm
7	5580113	Valve, Intake
8	5580121	Valve, Exhaust
9	5580139	Spring, Valve
10	1426980	Retainer, Intake Valve Spring
11	0294819	Screw, Tappet Adjusting
12	0004598	Nut, Tappet Adjusting
13	6315873	O-Ring 6.8 x 1.9 (ARAI)
14	6839831	Seal, Valve Stem

LABELS

KEY NO.	PART NO.	DESCRIPTION
9	7400187	Mark, Choke Indication

CARBURETOR

KEY NO.	PART NO.	DESCRIPTION
1	3088416	Packing Set
2	5580162	Float Set
3	3465879	Chamber Set, Float
5	1441518	Screw Set
7	7301138	Carburetor Assembly (BB62G A)
8	5580212	Valve, Float
9	5580220	Nozzle, Main
10	5580238	Insulator, Carburetor
11	5580246	Packing, Insulator
12	4581120	Packing, Carburetor
13	5580253	Packing, Carburetor
14	5580535	Guide Comp., Air
15	0639419	Screw, Pan Head #5 x 6
16	0635474	Jet, Main #60
	0635482	Jet, Main #62
	0636126	Jet, Main #65
17	1672187	Screw Set, Drain

FAN COVER

KEY NO.	PART NO.	DESCRIPTION
1	3683646	Rubber Supporter (107 mm)
2	7357379	Cock Assembly, Fuel
3	5189352	Bracket, Fuel Cock
4	6673289	Cap Assembly, Fuel Tank
5	5580469	Tube, Fuel
6	7399371	Cover Comp., Fan (T89)
8	6978399	Collar, Fuel Cock
9	5581004	Bolt, Stud
10	0671636	Screw, Washer Head #5 x 10
11	6754279	Tube, Fuel Tank
12	0250647	Clip, Tube (B8)
13	0250985	Clip, Tube (1310)
14	0053447	Clip, Tube (C9)

AIR CLEANER

KEY NO.	PART NO.	DESCRIPTION
1	5720289	Tube, Breather
2	6718159	Element, Air Cleaner
3	5580410	Case Assembly, Air Cleaner
5	5664560	Packing, Air Cleaner
6	6673255	Cover, Air Cleaner
7	5580964	Bolt, Flange #6 x 86 (CT200)
8	2374742	Bolt, Flange #6 x 14

RECOIL STARTER

KEY NO.	PART NO.	DESCRIPTION
1	6092886	Starter Assembly, Recoil
8	5580634	Grip, Starter
9	5580642	Rope, Recoil Starter
11	6478812	Nut, Flange 6 mm

PISTON / CONNECTING ROD

KEY NO.	PART NO.	DESCRIPTION
1	5580014	Piston
2	1426576	Pin, Piston
3	5580022	Rod Assembly, Connecting
4	1431055	Bolt, Connecting Rod
5	2605517	Clip, Piston Pin 13 mm
6	5655949	Ring Set, Piston (Riken)
	7154727	Ring Set, Piston (Teikoku)

CYLINDER BARREL

KEY NO.	PART NO.	DESCRIPTION
1	6842413	Barrel Assembly, Cylinder
2	2399780	Clip, Valve Guide
3	5579990	Cover, Head
4	5580006	Cover Comp., Breather
5	0636845	Bolt, Flange #6 x 12 (CT200)
6	0803619	Bolt, Flange #6 x 14 (CT200)
7	5581038	Oil Seal 25A x 62 x 6
8	1441112	Plug, Spark (BPR6ES) (NGK)
9	1899848	Guide, Exhaust Valve (O.S.)

FLYWHEEL

KEY NO.	PART NO.	DESCRIPTION
1	0348433	Key, Special, Woodruff #25 x 18
3	6859722	Coil Assembly, Ignition
4	6859714	Flywheel Assembly
5	6315816	Cord, Stop Switch
6	5580683	Switch Assembly, Engine Stop
8	5580790	Spring, Brake Lever
10	0803619	Bolt, Flange #6 x 14 (CT200)
11	1725050	Bolt, Flange #6 x 23 (CT200)
12	0671552	Bolt, Flange #6 x 20 (CT200)
13	0442038	Nut, Special 14 mm
15	0485946	Screw, Washer Head #4x12
16	1510361	Washer, Plain 4 mm
19	1824630	Clip A, Cable
20	1240845	Grommet A, Rear Cover
21	7301591	Brake Sub-Assembly

CRANKSHAFT

KEY NO.	PART NO.	DESCRIPTION
3	5664495	Crankshaft Comp.
5	5581012	Washer, Thrust

OIL PAN

KEY NO.	PART NO.	DESCRIPTION
1	6771489	Pan Assembly, Oil
2	5716915	Gauge Assembly, Oil Level
4	1452754	Packing, Oil Filler cap
5	5664503	Extension, Oil Filler
6	5664511	Washer, Extension Rock
8	6384341	Shaft Comp., Governor Holder
9	6384333	Governor Assembly
10	5580287	Weight, Governor
11	5580295	Holder, Governor Weight
12	1427244	Pin, Governor Weight
13	1427251	Slider, Governor
14	5580303	Shaft, Governor Arm
15	0803619	Bolt, Flange #6 x 14 (CT200)
16	0748111	Bolt, Flange #6 x 25
17	2413862	Washer, Thrust 6 mm
18	2456697	Clip, Governor Holder
19	5581046	Oil Seal 28 x 41.25 x 6
20	1377704	O-Ring 14.8 x 2.4 (NOK)
21	0345900	Washer, Plain 6 mm
22	0115527	Pin, Lock 8 mm
23	1417369	Dowel Pin #8 x 20

MUFFLER

KEY NO.	PART NO.	DESCRIPTION
1	5580485	Muffler Comp.
2	5664610	Protector, Muffler (CBU)
3	5580972	Bolt, Flange #6 x 79 (CT200)
4	0636845	Bolt, Flange #6 x 12 (CT200)
5	5737457	Gasket, Muffler

Get it fixed, at your home or ours!

Just Call:

1-800-4-MY-HOME[®]

(1-800-469-4663)

24 hours a day, 7 days a week

For the repair of major brand appliances **in your own home...**
no matter who made it, no matter who sold it!

For your nearest **Sears Parts and Service** location,
to bring in products like vacuums, lawn equipment and electronics.

For **Sears Parts & Service**, to order the replacement parts,
accessories and owner's manuals that you need to do-it-yourself.

www.sears.ca

To purchase or inquire about a Sears Maintenance Agreement, call:

1-800-361-6665

9 a.m. – 11 p.m. Mon. – Fri., EST, 9 a.m. – 4 p.m. Sat.

Pour service en français:

1-800-LE-FOYER^{MC}

(1-800-533-6937)

www.sears.ca



[®] / TM Trademarks of Sears, Roebuck and Co. used under license by Sears Canada

^{MD} Marque déposée / ^{MC} Marque de commerce de Sears, Roebuck and Co. utilisée en vertu d'une licence de Sears Canada