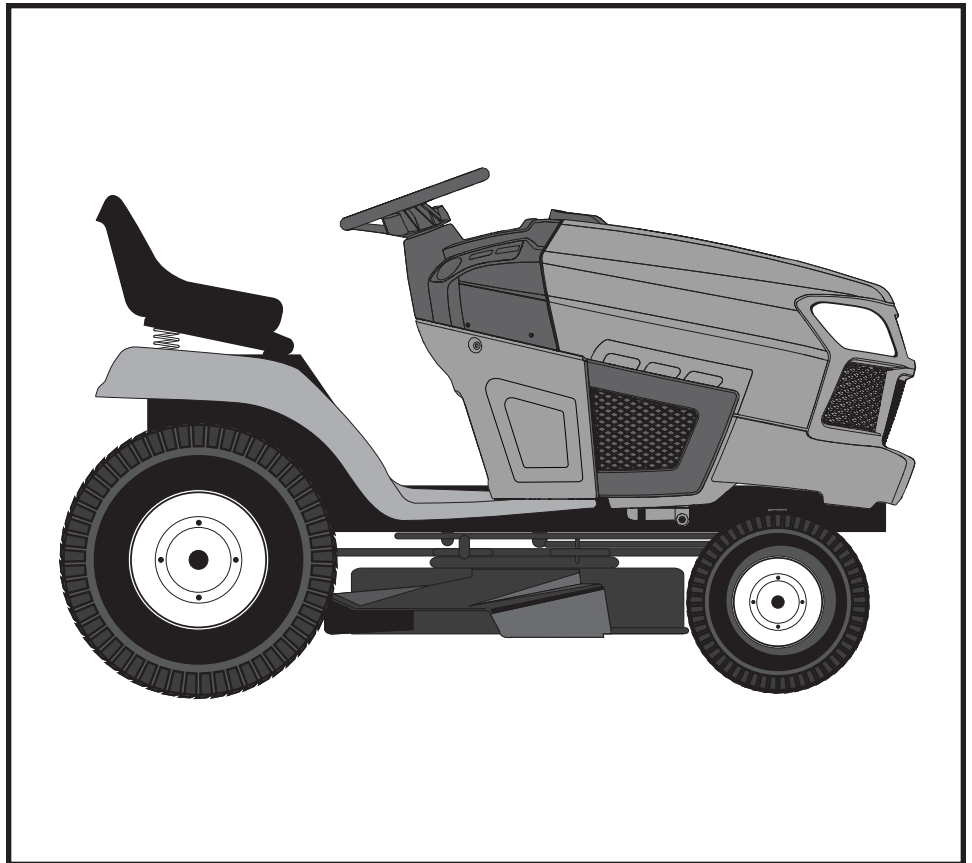


**SEARS**  
REPAIR  
PARTS  
MANUAL

**MODEL NO.**  
**944.604230**

**IMPORTANT:**  
Read and follow  
all Safety Rules  
and Instructions  
Before Operating  
This Equipment



**CRAFTSMAN®**

**19.0 HP\***  
**ELECTRIC START**  
**42" MOWER**  
**AUTOMATIC TRANSMISSION**  
**LAWN TRACTOR**

\* The power rating as declared by the engine manufacturer is the average gross power output at the specified RPM of a typical production engine for the engine model measured using SAE Standards for engine gross power. Please refer to the engine manufacturer for details.

**Sears Canada, Inc., Toronto, Ontario M5B 2B8**

**586652127 Rev. 3**

05.09.14 BD  
Printed in the U.S.A.

# HOW TO USE THIS MANUAL

This manual is designed to provide the customer with a means to identify the parts on his/her tractor when ordering repair parts. The illustrations may or may not represent the actual assemblies; therefore, it is not recommended to use this manual as a guide to assemble or disassemble the tractor. Some hardware and parts are drawn larger in order to more readily identify them.

Each tractor has its own model number.

The model number for your tractor can be found on the fender under the seat.

When ordering parts, always give the following information:

- Product - "Tractor"
- MODEL NUMBER - "944.604230"
- Part Number
- Part Description

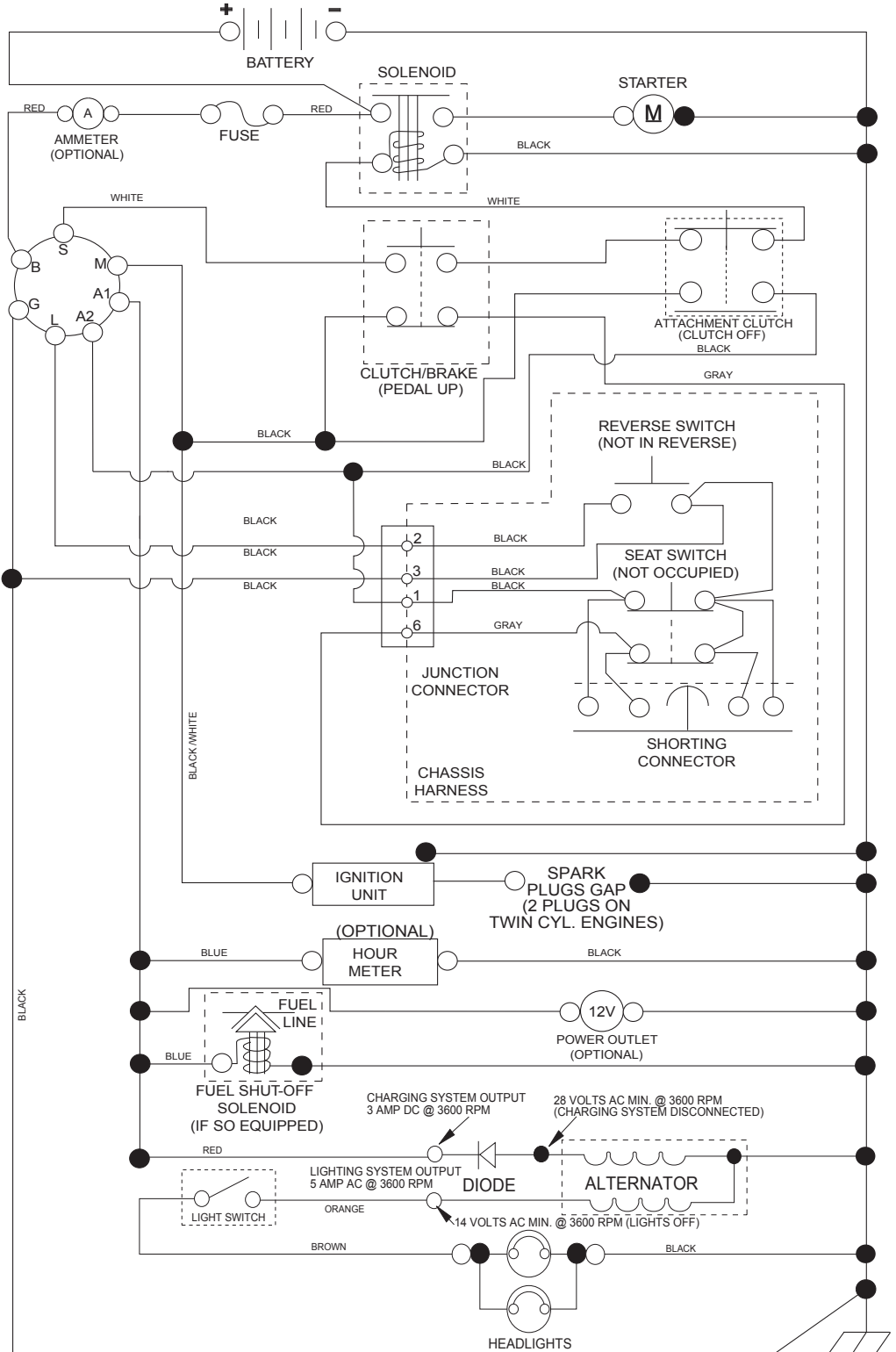
## TABLE OF CONTENTS

SCHEMATIC .....	3
ELECTRICAL.....	4-5
CHASSIS .....	6-7
DRIVE.....	8-9
ENGINE.....	10-11
STEERING .....	12-13
MOWER DECK .....	14-15
MOWER LIFT.....	16
SEAT .....	17
DECALS.....	18
ENGINE BREAKDOWN.....	20-23
SEARS SERVICE .....	24

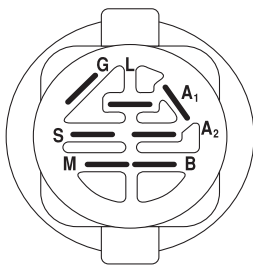
# TRACTOR - - MODEL NUMBER 944.604230

## SCHEMATIC

SCH11

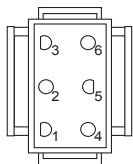


**NOTE**  
 YOUR TRACTOR IS EQUIPPED WITH A SPECIAL ALTERNATOR SYSTEM. THE LIGHTS ARE NOT CONNECTED TO THE BATTERY, BUT HAVE THEIR OWN ELECTRICAL SOURCE. BECAUSE OF THIS, THE BRIGHTNESS OF THE LIGHTS WILL CHANGE WITH ENGINE SPEED. AT IDLE THE LIGHTS WILL DIM. AS THE ENGINE IS SPEEDED UP, THE LIGHTS WILL BECOME THEIR BRIGHTEST.

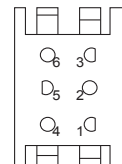


IGNITION SWITCH

POSITION	CIRCUIT "MAKE"
OFF	M+G+A1
RUN/OVERRIDE	B+A1
RUN	B+A1 L+A2
START	B + S + A1



CHASSIS HARNESS CONNECTOR (MATING SIDE)



DASH HARNESS CONNECTOR (MATING SIDE)

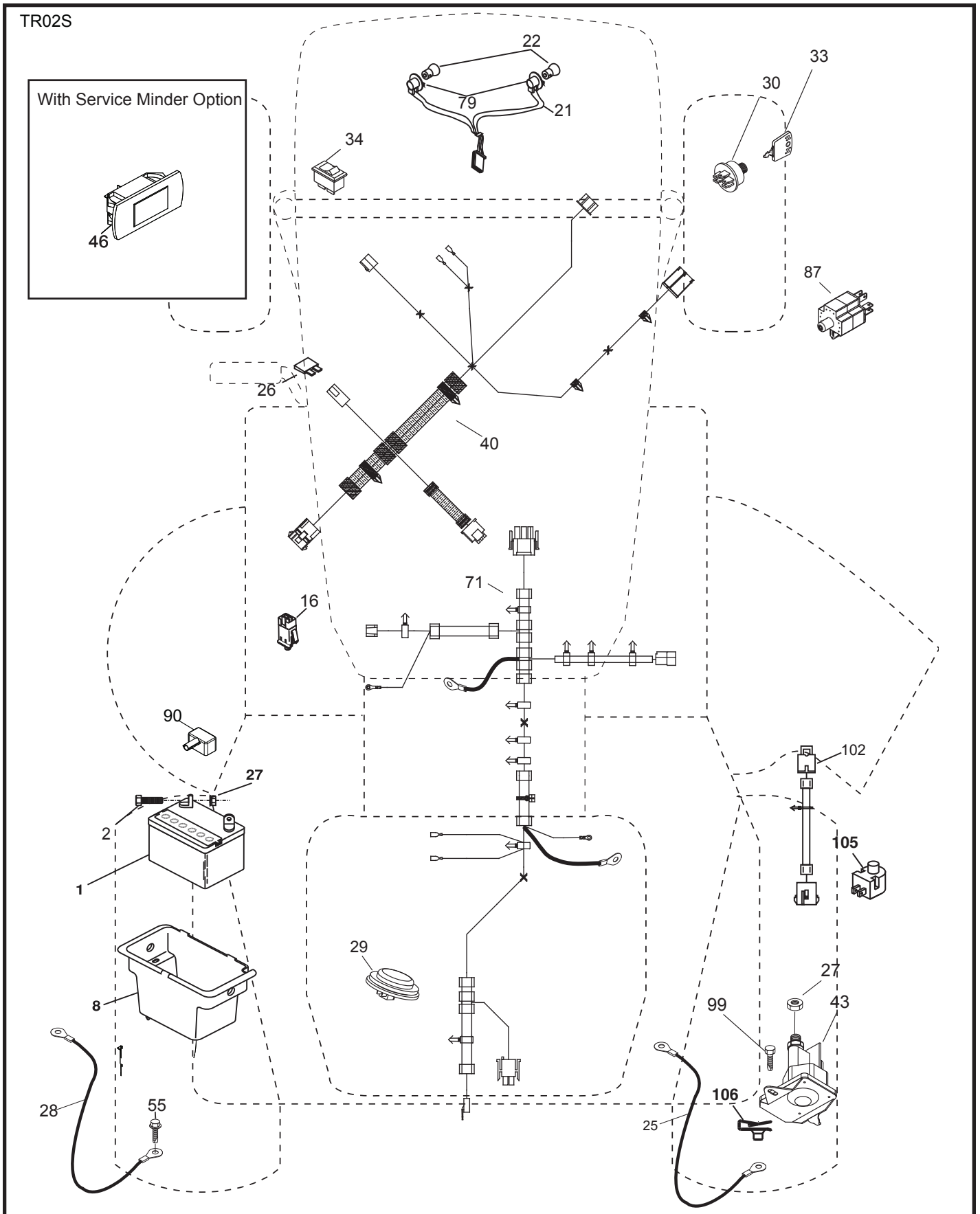
**WIRING INSULATED CLIPS**  
 NOTE: IF WIRING INSULATED CLIPS WERE REMOVED FOR SERVICING OF UNIT, THEY SHOULD BE RE-INSTALLED TO PROPERLY SECURE YOUR WIRING.

NON-REMOVABLE CONNECTIONS

REMOVABLE CONNECTIONS

# TRACTOR -- MODEL NUMBER 944.604230

## ELECTRICAL



# TRACTOR - - MODEL NUMBER 944.604230

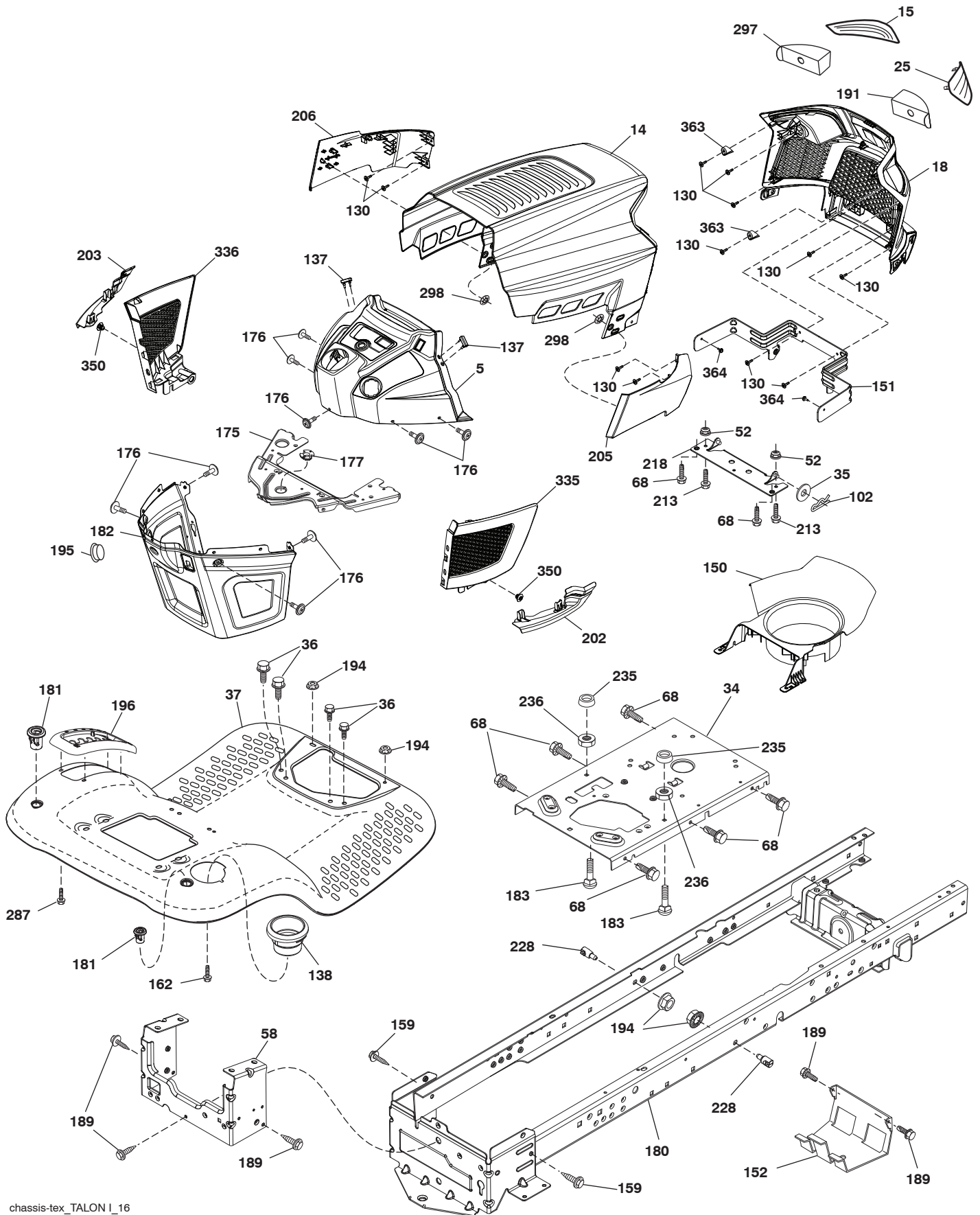
## ELECTRICAL

KEY NO.	PART NO.	DESCRIPTION
1	163465	Battery
2	74760412	Bolt Hex Hd 1/4-20 unc x 3/4
8	193228	Box Battery
16	176138	Switch Interlock Push-In
21	400252	Harness Socket Light w/4152J
22	4152J	Bulb Light
25	581498001	Cable Starter
26	175158	Fuse
27	73510400	Nut Keps Hex 1/4-20 unc
28	421686	Cable, Ground
29	401545	Switch, Seat
30	193350	Switch, Ign
33	411934	Key/Chain
34	110712X	Switch Light / Reset
40	401098	Harness Ign. Dash <b>(if equipped with front solenoid)</b>
--	581023101	Harness Ign. Dash <b>(if equipped with rear solenoid)</b>
43	192507	Solenoid
55	17060512	Screw Thdrol 5/16-18 x 3/4 TYTT
71	400449	Harness Ign. Chassis <b>(if equipped with front solenoid)</b>
--	581023001	Harness Ign. Chassis <b>(if equipped with rear solenoid)</b>
79	175242	Bulbholder Asm. Incandescent
87	197802	Switch Interlock Clutch Cable
90	435395	Cover Terminal Battery
99	17670412	Screw Hexwsh thdro; 1/4-20 unc
102	581901601	Harness Pigtail
105	407568	Switch Reverse
106	174814	Palnut 1/4 Lugs

**NOTE:** All component dimensions given in U.S. inches  
1 inch = 25.4 mm

# TRACTOR - - MODEL NUMBER 944.604230

## CHASSIS



# TRACTOR - - MODEL NUMBER 944.604230

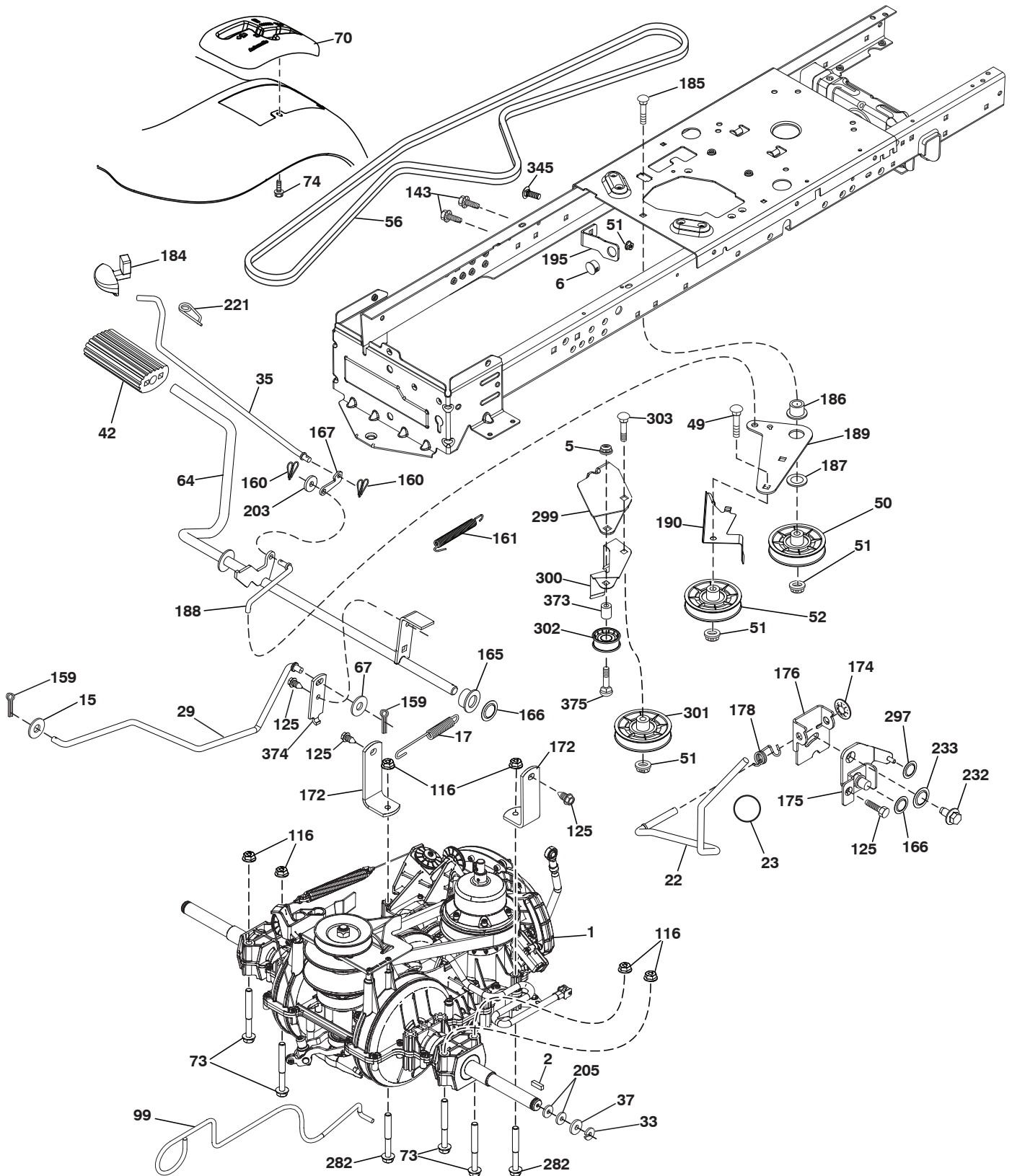
## CHASSIS

KEY NO.	PART NO.	DESCRIPTION	KEY NO.	PART NO.	DESCRIPTION
5	580485903	Dash	191	580485101	Mylar Headlight RH
14	580354405	Hood	194	73900500	Nut Lock Hex Flange 5/16-18
15	580485601	Lens LH	195	401556X428	Plug Hole Dash 12V Adapter
18	580485302	Grille	196	431658	Console Asm. Deck Lift
25	580484501	Lens RH	202	580485003	C-Closeout Lwr Trm RH
34	580910801	Plate engine	203	580484803	C-Closeout Lwr Trm LH
35	19111116	Washer 11/32 x 11/16 x 16 Ga.	205	580843708	Assembly Corner RH
36	17060512	Screw 5/16-18 x 3/4	206	580843808	Assembly Corner LH
37	414872X613	Fender	213	74760512	Bolt hex HD 5/16-18 unc x 3/4
52	73680500	Nut Crown lock 5/16-18	218	580897301	Pivot Hood Assy
58	412280	Drawbar upper	228	195161	Stud Fastener
68	17490508	Screw Thdrol 5/16-18 x 1/2	235	406129	Spacer Fender
102	4497H	Retainer Spring 1"	236	73930500	Nut Center Lock 5/16-18
125	581684801	Clip Fuel Line	287	17600406	Screw Hex Washhead 1/4-20 x 3/8
130	416358	Screw # 10 x .750 BOS Thread	297	580484901	Mylar Headlights LH
137	407590	Bumper Dash	298	580851001	Nut Push
138	193224X428	Cupholder	306	73900600	Nut
146	581857901	Bolt	335	580484602	C-Side Closeout RH
150	580485503	Duct Heat Hood	336	580484402	C-Side Closeout LH
151	580663302	Bracket Pivot	350	445143	Clip X-Mass Tree
152	199535	Shield Browning/Debris	363	580724501	Cap Talon Grille
159	17000612	Screw Hexwsh Thdrol 3/8-16 x 3/4	364	17060408	Screw
162	142432	Screw Hex Wsh Hi-Lo 1/4 x 1/2	- - -	404951X428	Plug Dash SRVMNDR
175	196304	Crossmember			
176	400776	Screw 10-24 x 5/8 Wshd Qdrx			
177	195227	Bushing Steering			
180	415063	Chassis			
181	193102X428	Bushing Mtg. Fender Crgo.			
182	586738602	Dash Lower			
183	74520520	Bolt 5/16-18 x 1-1/4			
189	17000512	Screw 5/16-18 x 3/4			

**NOTE:** All component dimensions given in U.S. inches  
1 inch = 25.4 mm

# TRACTOR - - MODEL NUMBER 944.604230

## DRIVE





# TRACTOR - - MODEL NUMBER 944.604230

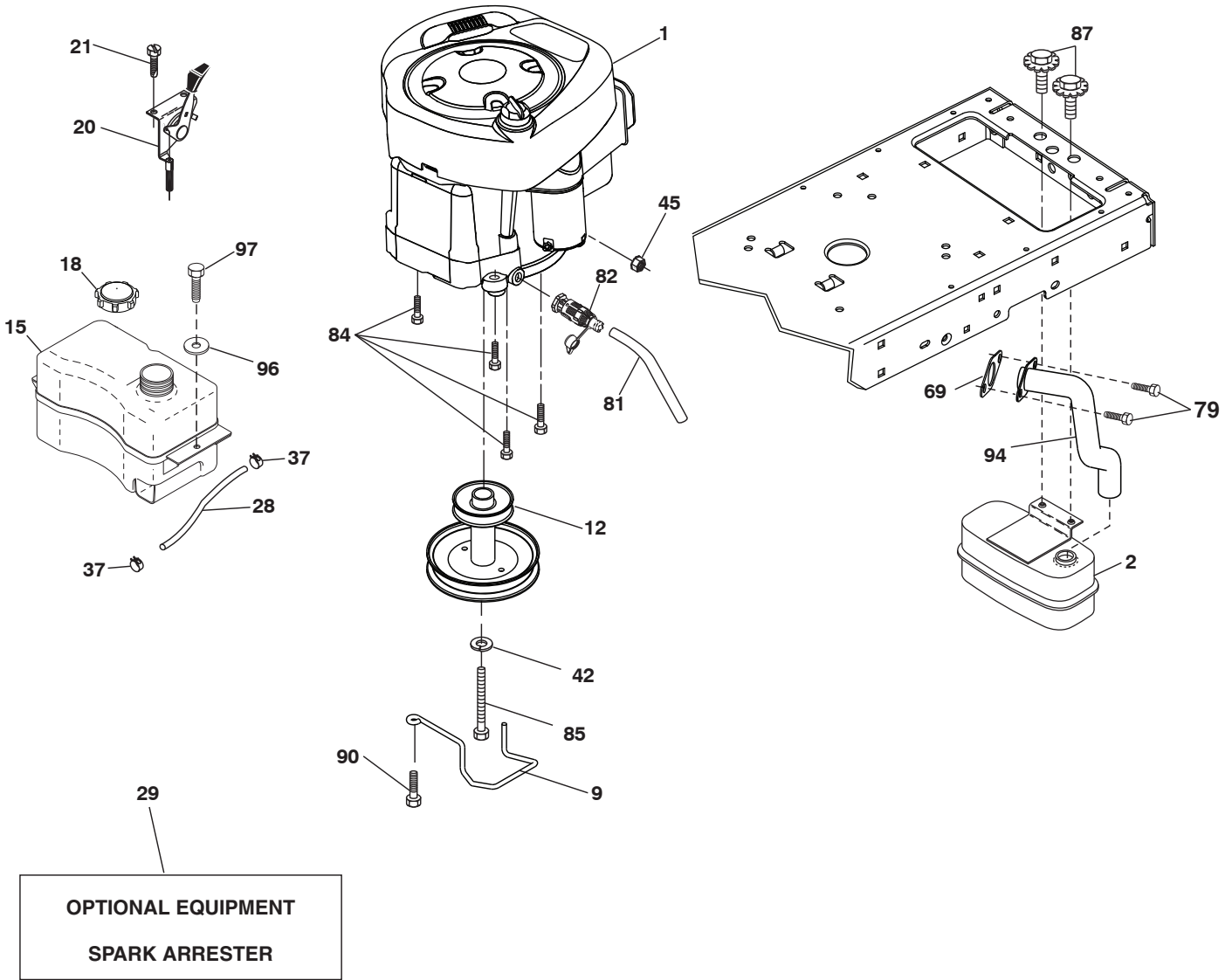
## DRIVE

KEY NO.	PART NO.	DESCRIPTION	KEY NO.	PART NO.	DESCRIPTION
1	-----	Transaxle, Gentrans Variator (580486301)(Order parts from transaxle manufacturer.)	166	429164	Nut Push .625
2	123583X	Key.Square .2.0 x .1845/.1865	167	405257	Latch.Brake.Parking
5	73680600	Nut Crownlock	172	583974201	Strap Torque Lh/Rh
6	124028X	Bushing Snap	174	197289	Nut.Push..500
15	19131316	Washer 13/32 x 13/16 x 16 Ga.	175	415677	Shaft Asm Shift
17	584954001	Spring Brake	176	196214	Arm.Clevis.Rod.Shift
22	421063	Rod Shift	178	197456	Spring.Shift.Gt.2006
23	140845	Knob	184	196439X667	Handle.Parking Brake.Lttex.505
29	584823101	Rod Brake	185	72110622	Bolt.Rdhd.3/8-16 Unc x 2-3/4 Gr5
33	12000001	E-Ring. #5133-75	186	194321	Spacer.Retainer
35	583864501	Rod.Brake.Parking. Lt.Tex	187	19133210	Washer.13/32 x 2 x 10 Ga.
37	188967	Washer Harden .793 x 1.637 x 060	188	194323	Link.Clutch.Ground Drive
42	8883R	Cover.Pedal.Blk.Round	189	194317	Bellcrank.Grounddrive.Nstg/Nstl
49	72110614	Bolt.Rdhd.3/8-16Uncx1-3/4.Gr 5	190	194318	Keeper.Bellcrank.Drive.Ground
50	194327	Idler.Flat	195	581504601	Bracket Brake
51	73900600	Nut, Hex, Flangelock 3/8-16	203	19111116	Washer 11/32 x 11/16 x 16 Ga.
52	194326	Idler.V-Groove	205	121748	Washer.25/32 x 1-5/8 x 16Ga.
56	197253	Belt.Drive.100.97"	221	403187	Retainer.Spring.Clip.Handle
64	580401501	Shaft Asm.Pedal.Brake Control	232	74780716	Bolt.Fin Hex.7/16-14 x 1 Gr5
67	19131312	Washer 13/32 x 13/16 x 12 Ga.	233	405296	Washer.Serrated
70	415688X428	Console	282	74490548	Screw Thdrol 5/16-18 x 3
73	74490544	Bolt.Hex.Flghd.5/16-18.Gr.5	297	420223	Nut Push 1/4
74	142432	Screw.Hex.Wsh.Hi-Lo.1/4 X 1/2 unc	299	415683	Bracket Mount Idler
99	435935	Rod Bypass	300	415681	Keeper Idler Rear
116	73900500	Nut, Lock Hex Flange 5/16-18 unc	301	415680	Pulley Idler V-Groove
125	17000512	Screw.5/16-18 x 3/4.Smgml. Tap/Bl	302	581420501	Pulley Idler Flat 2.0 Od
143	17490508	Screw.Thdrol.5/16-18 x 1/2 Tytt	303	72110618	Bolt Rdhd Sgnk 3/8-16 x 2-1/4
159	76020412	Pin Cotter 1/8 x 3/4	345	72110606	Bolt Rdhd Sqnk 3/-16 x 1 GR5
160	169484	Retainer.Clip(M).Dia.290	373	581461801	Spacer Idler
161	105709X	Spring.Return.Clutch.6.75	374	581475201	Arm Control Brake
165	196212	Bushing.Shaft.Brake.Hand Contr	375	74760636	Bolt Hex

**NOTE:** All component dimensions given in U.S. inches  
1 inch = 25.4 mm

# TRACTOR - - MODEL NUMBER 944.604230

## ENGINE



engine-tex\_BS\_63

# TRACTOR - - MODEL NUMBER 944.604230

## ENGINE

KEY PART NO.	PART NO.	DESCRIPTION
1	---	Engine B&S Model No. 33R877-0017-G1 (586607501) (See engine breakdown.)
2	580532301	Muffler
9	194319	Keeper Belt Engine
12	401985	Pulley Engine
15	581290101	Tank Fuel
18	430220	Cap Asm. Fuel
20	175438X428	Control Throttle/Choke
21	416358	Screw 10 x .750 BOS Thread
28	401137	Fuel Line
29	137180	Spark Arrester Kit
37	123487X	Clamp Hose
42	10040700	Washer Lock 7/16
45	73510400	Nut Keps Hex 1/4-20 unc
69	165291	Gasket
79	192334	Screw 5/16-18 x .75
81	148456	Tube Drain Oil Easy
82	428287	Valve Oil Drain
84	17060620	Screw 3/8-16 x 1-1/4
85	173937	Bolt Hex 7/16-20 x 4 x Gr. 5-1.5
87	171877	Bolt 5/16-18 unc x 3/4 w/Sems
90	17000616	Screw 3/8-16 x 1.0
94	581880901	Exhaust Tube
96	19091416	Washer 9/32 x 7/8 x 16 Ga.
97	17670412	Screw 1/4-20 x 3/4

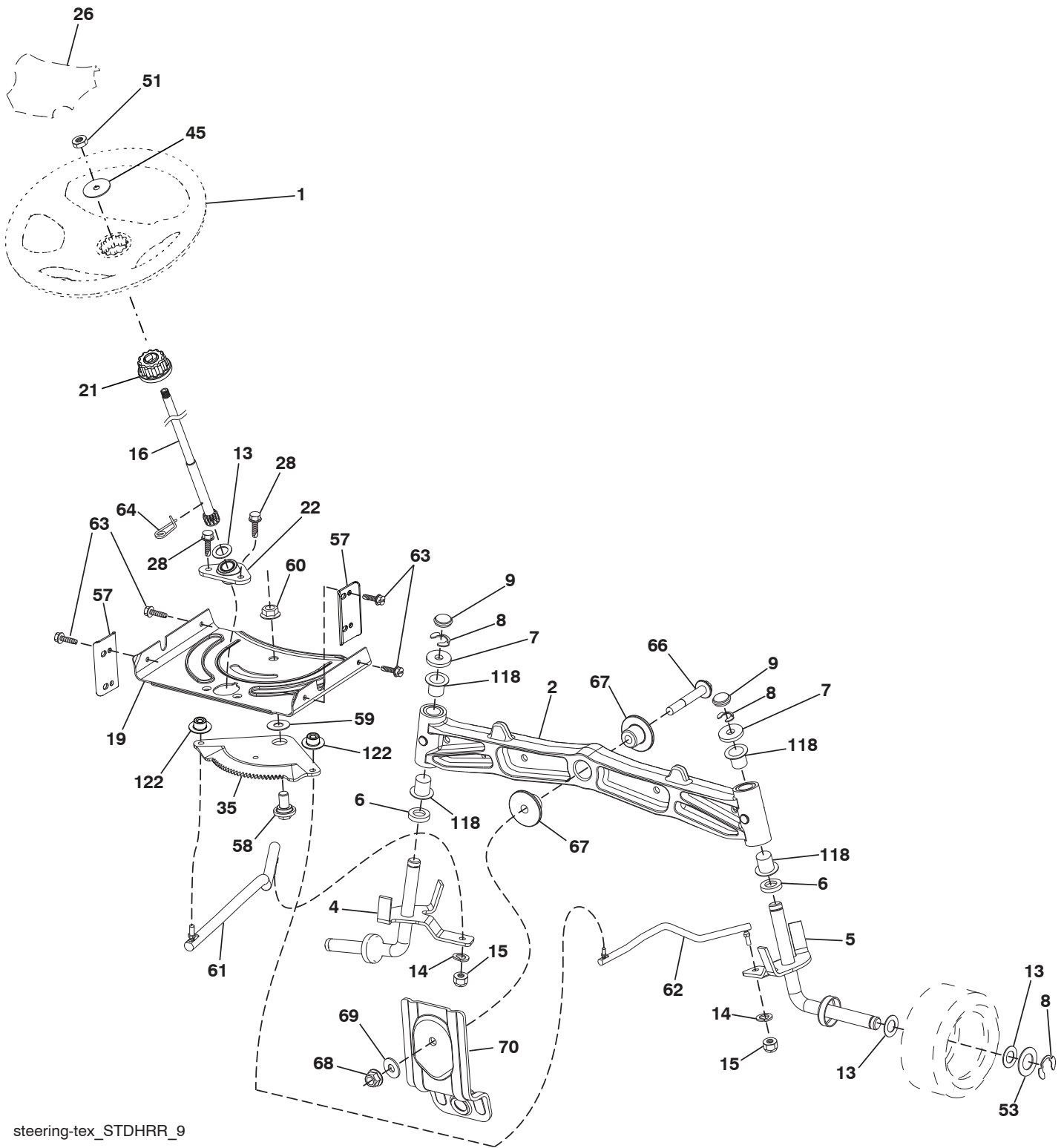
**NOTE:** All component dimensions given in U.S. inches  
1 inch = 25.4 mm

### Engine Power Rating Information

The gross power rating for individual gas engine models is labeled in accordance with SAE (Society of Automotive Engineers) code J1940 (Small Engine Power & Torque Rating Procedure), and rating performance has been obtained and corrected in accordance with SAE J1995 (Revision 2002-05). Torque values are derived at 3060 RPM; horsepower values are derived at 3600 RPM. Actual gross engine power will be lower and is affected by, among other things, ambient operating conditions and engine-to-engine variability. Given both the wide array of products on which engines are placed and the variety of environmental issues applicable to operating the equipment, the gas engine will not develop the rated gross power when used in a given piece of power equipment (actual "on-site" or net power). This difference is due to a variety of factors including, but not limited to, accessories (air cleaner, exhaust, charging, cooling, carburetor, fuel pump, etc.), application limitations, ambient operating conditions (temperature, humidity, altitude), and engine-to-engine variability. Due to manufacturing and capacity limitations, Briggs & Stratton may substitute an engine of higher rated power for this Series engine.

# TRACTOR - - MODEL NUMBER 944.604230

## STEERING ASSEMBLY



steering-tex\_STDHRR\_9

# TRACTOR - - MODEL NUMBER 944.604230

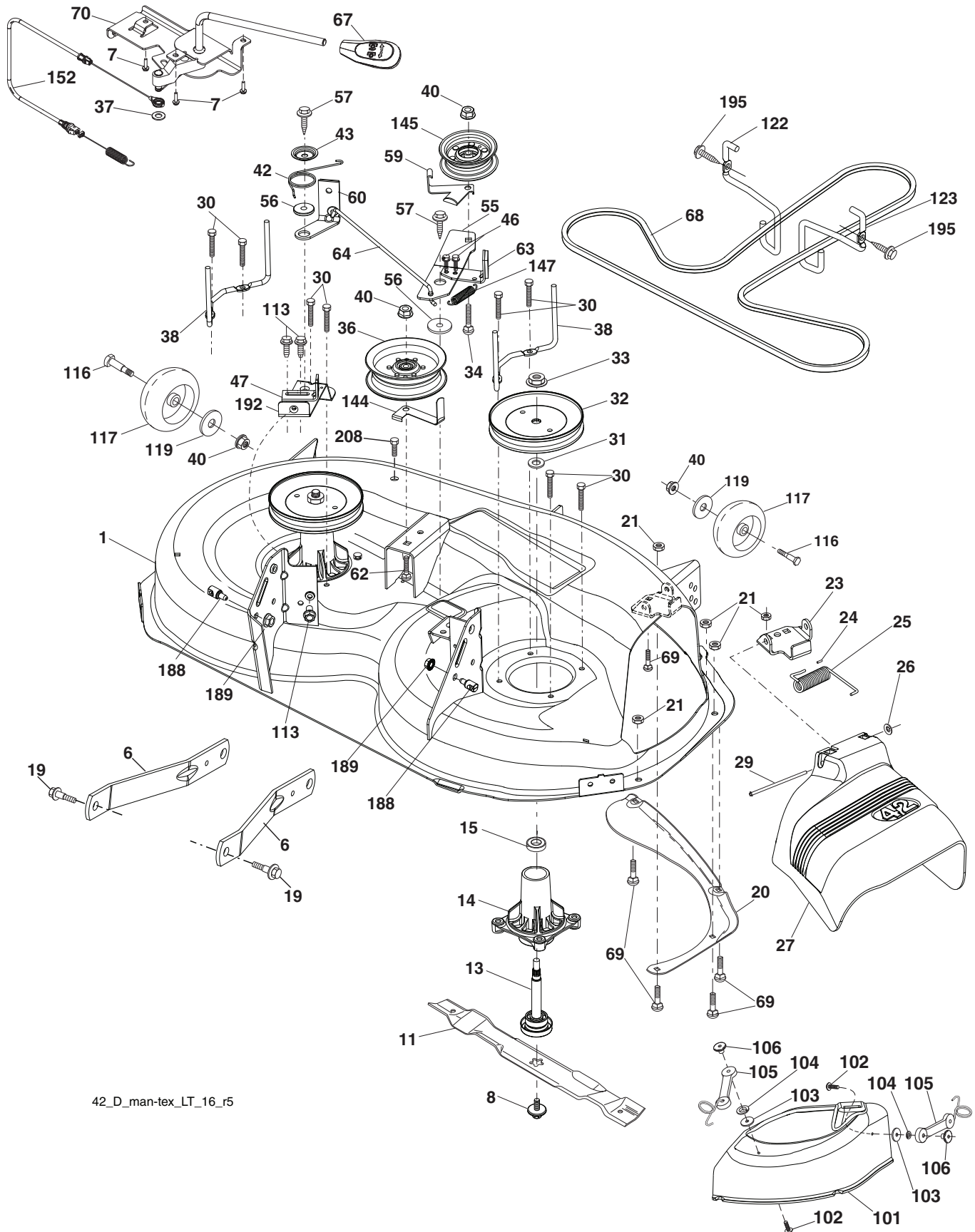
## STEERING ASSEMBLY

KEY NO.	PART NO.	DESCRIPTION
1	414803X428	Wheel, Steering
2	436870	Axle Asm., Front
4	403087	Spindle Asm., LH
5	403088	Spindle Asm., RH
6	6266H	Washer Thrust
7	121748X	Washer 25/32 x 1-5/8 x 16 Ga.
8	1200029	Ring, Klip #T5304-75
9	184946X667	Cap, Spindle
13	121749X	Washer 25/32 x 1-1/4 x 16 Ga.
14	10040600	Washer, Lock Hvy Hlcl Spr 3/8
15	73540600	Nut, Crown Lock 3/8-24 unf
16	408219	Shaft Steering
19	194729	Plate Steering
21	186737	Adapter, Wheel Steering
22	420537	Bushing, Supt. Lower
26	414852X428	Insert, Wheel Steering
28	17000612	Screw 3/8-16 x 3/4
35	194732	Gear, Sector Plate
45	19183812	Washer 9/16 x 2-3/8 x 12 Ga.
51	73940800	Nut Hex 1/2-20 unf
53	188967	Washer Hardened .793 x 1.637 x .060
57	407465	Bracket Upstop
58	194747	Bolt Shoulder Sector Pivot CFM
59	194748	Washer Thrust Sector Steering
60	73971000	Nut Flange Lock 5/8-11
61	194740	Draglink LH
62	194741	Draglink, RH
63	17000512	Screw 5/16-18 x 3/4
64	199849	Retainer Clip Spring Steering
66	71020748	Bolt Hex Fghd 7/16-14 x 3 Serr
67	194737	Bushing PM Front Axle
68	73900700	Nut Lock Flange 7/16-14 Gr. 5
69	199162	Washer 1.5 x .505 x .118
70	196197	Bracket Deck Susp. Front
118	406013	Bushing
122	444962	Cap Gear

**NOTE:** All component dimensions given in U.S. inches  
1 inch = 25.4 mm

# TRACTOR - - MODEL NUMBER 944.604230

## MOWER DECK



42\_D\_man-tex\_LT\_16\_r5

# TRACTOR - - MODEL NUMBER 944.604230

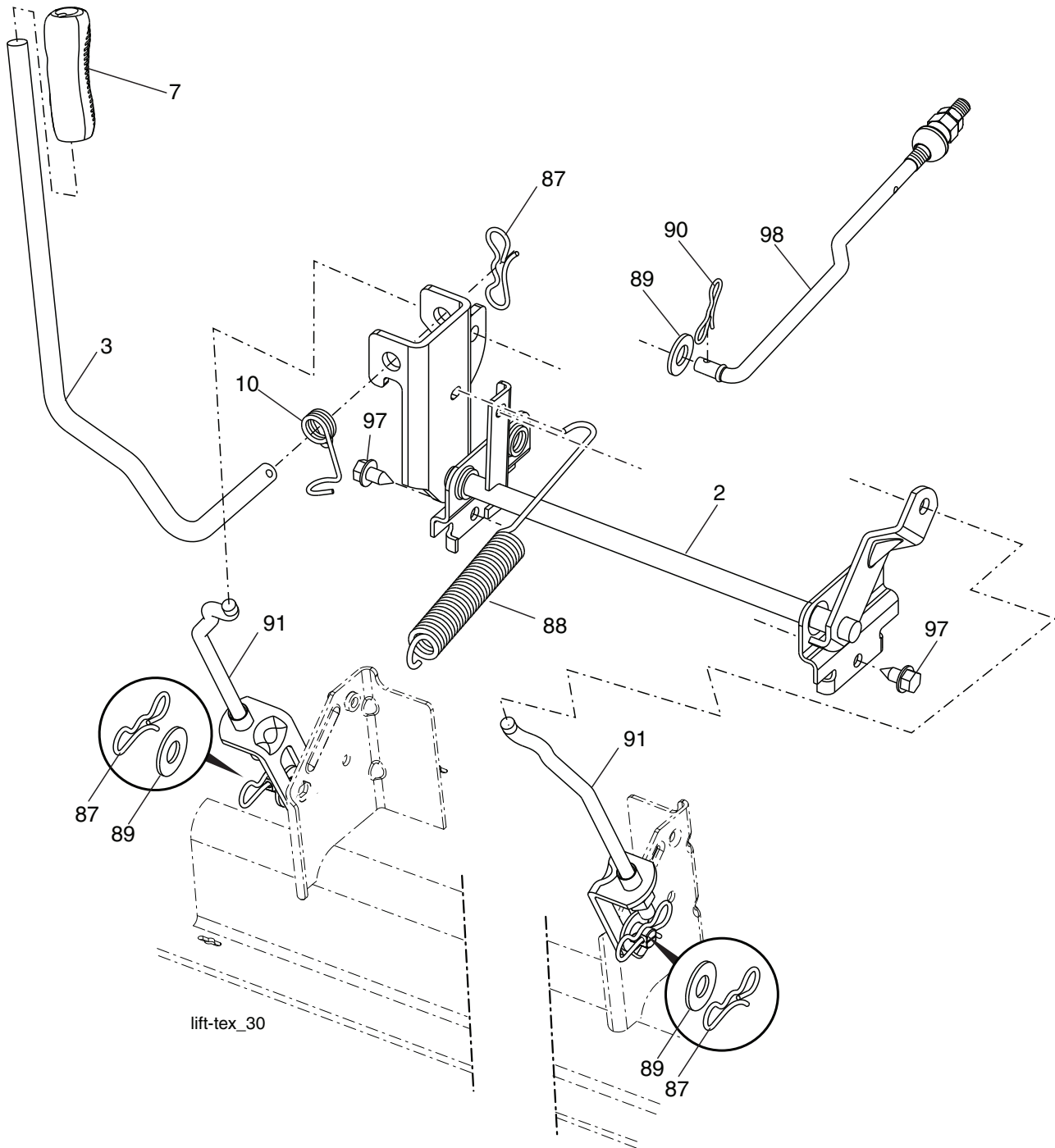
## MOWER DECK

KEY NO.	PART NO.	DESCRIPTION	KEY NO.	PART NO.	DESCRIPTION
1	196495X613	Mower Housing	67	198398X667	Handle, Clutch Cable
6	195186	Arm Suspension	68	429636	V-Belt
7	416358	Screw 10 x .750 BOS Thread	69	72140505	Bolt Rdhd Sqnk 5/16-18 x 5/8
8	193003	Bolt/Washer Asm 7/16-20 unf	70	199972	Clutch Asm. Manual
11	424752	Blade, 3N1 Premium (For bagging or discharge)	101	193107	Cover Mulching
13	192872	Shaft Assembly, Mandrel	102	71081010	Screw Pan HD Phillip 10-24 x 5/8
14	187281	Housing, Mandrel	103	19061216	Washer #10
15	110485X	Bearing, Ball, Mandrel	104	10071000	Washer Lock #10
19	196539	Bolt, Shoulder	105	160793	Latch Asm. Mulch
20	159770	Baffle, Vortex	106	2029J	Nut Weld .327/.304 #10-24
21	73680500	Nut, Crownlock 5/16-18 unc	113	17000510	Screw 5/16-18
23	192557	Bracket, Deflector	116	4898H	Bolt, Shoulder
24	105304X	Cap, Sleeve	117	188606	Wheel, Gauge
25	197026	Spring, Torsion, Deflector	119	19121414	Washer 13/32 x 7/8 x 14 Ga.
26	110452X	Nut, Push	122	197258	Keeper Belt Eng. LH
27	424469	Shield, Deflector	123	197259	Keeper Belt Eng. RH
29	131491	Rod, Hinge	144	199204	Keeper Belt
30	173984	Screw Thdrol Rolling Wsh Hd	145	193197	Pulley, Idler, Flat
31	187690	Washer, Spacer	147	401971	Spring Return
32	197473	Pulley, Mandrel	152	584243501	Cable Clutch Manual w/Spr.
33	400234	Nut, Toplock, Flanged	188	195161	Stud Fastener
34	72110612	Bolt Carr Sh. 3/8-16 x 1-1/2 Gr. 5	189	73900500	Nut Lock Hex Flange
36	197379	Pulley Idler	192	197260	Bracket Brake Stand LH
37	19131316	Washer 13/32 x 13/16 x 16 Ga.	195	17000612	Screw Hexwsh Thdr 3/8-16 x 3/4
38	432520	Keeper Belt LH Mandrel	208	17670608	Screw Thdr 3/8-16 x 1/2
40	73900600	Nut, Lock Flg. 3/8-16 unc	--	192870	Mandrel Assembly (Includes housing (key #14), shaft assembly (key #13), and bearing (key #15) only - pulley/ nut/washer and blade bolt/washers not included)
42	198410	Spring Torsion Brake	--	442755	Replacement Mower, Complete
43	197256	Spring Torsion Retainer			
46	137729	Screw Thd Roll 1/4-20 x 5/8			
47	197250	Bracket Clutch Cable			
55	437110	Arm, Idler			
56	199092	Spacer, Retainer			
57	17000616	Screw Hexwsh Thd 3/8-16 x 1			
59	141043	Guard, Tuv Idler (94)			
60	197261	Arm Brake Mower			
62	72110616	Bolt Rdhd Sqnk 3/8-16 unc x 2			
63	199477	Arm Brake Mower			
64	199790	Linkage Brake			

**NOTE:** All component dimensions given in U.S. inches  
1 inch = 25.4 mm

# TRACTOR - - MODEL NUMBER 944.604230

## MOWER LIFT



KEY NO.	PART NO.	DESCRIPTION
2	422027	Shaft Asm., Cross Lift
3	426896	Lever Asm., Lift RH
7	445060X428	Grip, Lever
10	196314	Spring Torsion
87	194209	Pin Cotter 7/16 Bow Tie Lock
88	410710	Spring Lift Assist
89	19191912	Washer Clear Zinc
90	194208	Pin Cotter 5/16 Bow Tie Lock

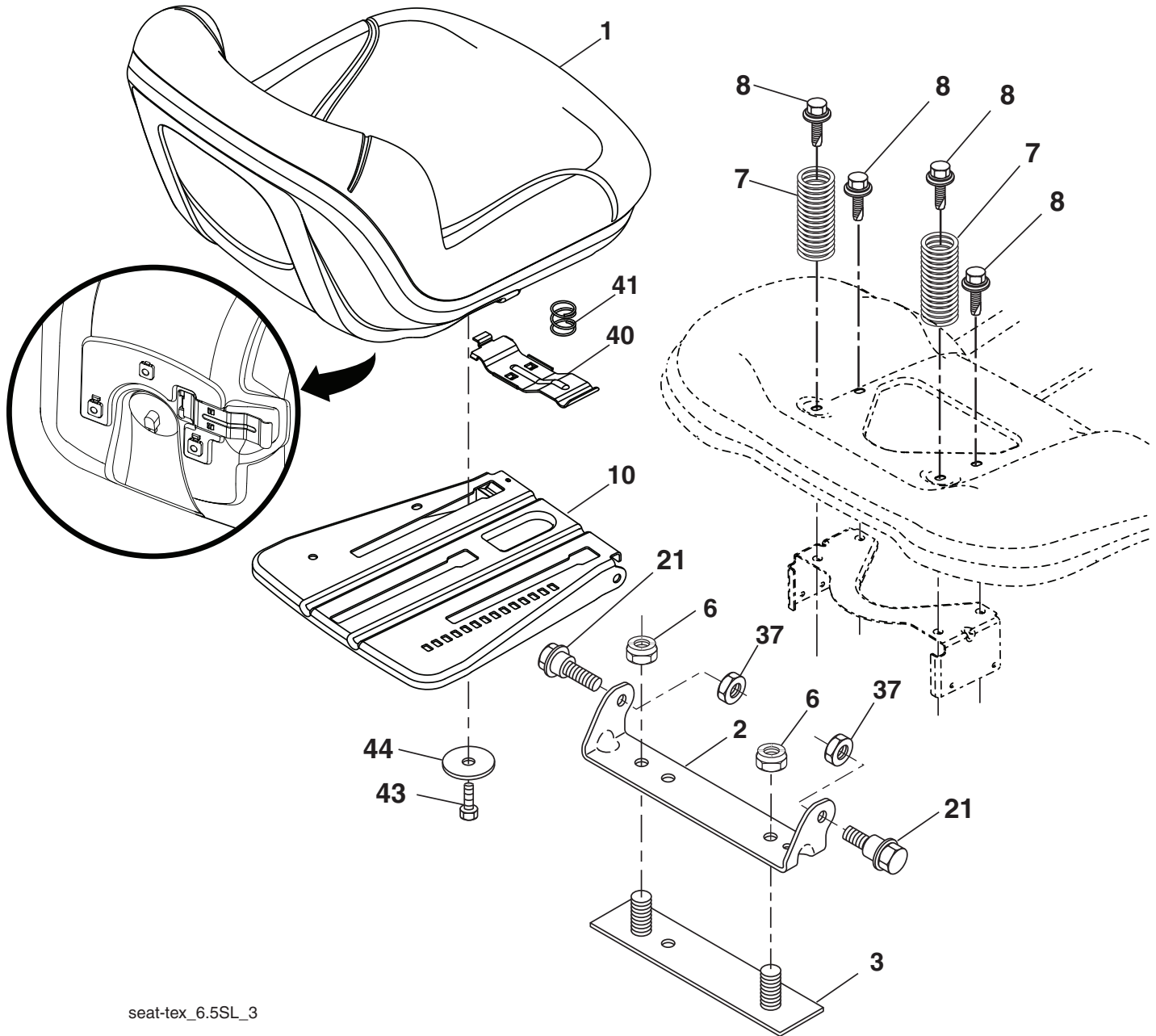
KEY NO.	PART NO.	DESCRIPTION
91	197984	Link Lift Susp Mower Rear
97	17000612	Screw 3/8-16 x .75 Smgml Tap/R.Z
98	420525	Link Lift Susp. Front Mower

**NOTE:** All component dimensions given in U.S. inches  
1 inch = 25.4 mm



# TRACTOR - - MODEL NUMBER 944.604230

## SEAT ASSEMBLY



seat-tex\_6.5SL\_3

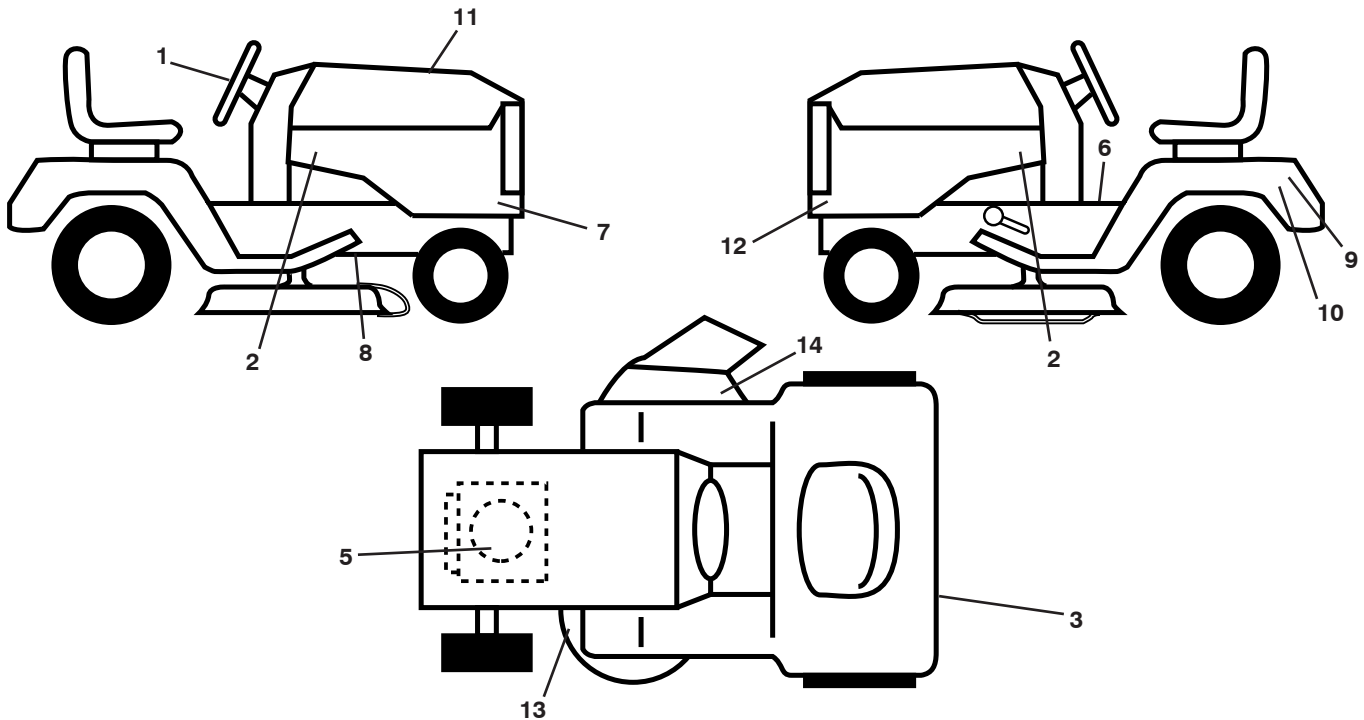
KEY NO.	PART NO.	DESCRIPTION
1	423645	Seat
2	180166	Bracket Pivot Fender
3	140675	Strap, Asm Fender
6	73800600	Nut, Lock W/Ins. 3/8-16 unc
7	124181X	Spring, Seat Cprsn
8	171877	Bolt 5/16-18 unc x 3/4 w/Sems
10	196977	Pan, Seat
21	171852	Bolt, Shoulder 5/16-18

KEY NO.	PART NO.	DESCRIPTION
37	73800500	Nut, Lock 5/16-18 unc
40	197661	Handle Slide Seat
41	198200	Spring Latch Seat
43	74760612	Bolt 3/8-16 x 3/4
44	19133812	Washer 13/32 x 2-3/8 x 12 Ga.

**NOTE:** All component dimensions given in U.S. inches  
1 inch = 25.4 mm

# TRACTOR - - MODEL NUMBER 944.604230

## DECALS



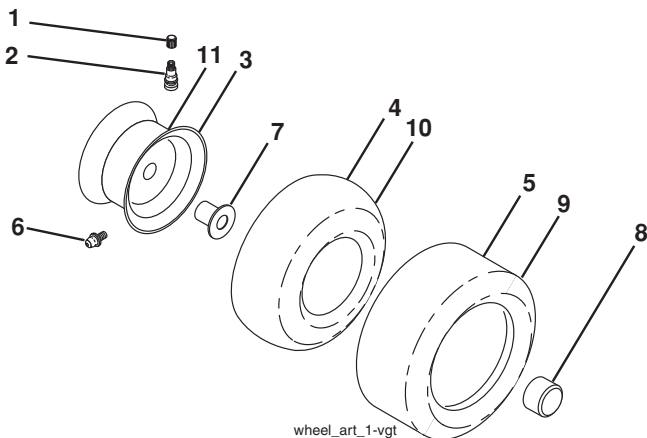
### KEY PART NO. NO.

KEY PART NO.	NO.	DESCRIPTION
1	581894601	Decal, Steering
2	585767601	Decal, Hood
3	586627301	Decal, Fender
5	585722401	Decal, Engine HP
6	581579001	Decal, Fender Warning
7	586644501	Decal, Sideskirt RH
8	421534	Decal, V-Belt Schematic Drive
9	149517	Decal, Battery Warning
10	448709	Decal, Battery
11	580385701	Decal, Replacement

### KEY PART NO. NO.

KEY PART NO.	NO.	DESCRIPTION
12	586644502	Decal, Sideskirt LH
13	581580001	Decal, Mower V-Belt SCH.
14	584904601	Decal, Deck/Deflect Warning
--	193226X428	Pad, Footrest LH
--	193227X428	Pad, Footrest RH
--	581724801	Decal, Bypass
--	586652124	Manual, Operator's (English/French)
--	586652127	Manual, Parts (English/French)

## WHEELS AND TIRES



### KEY PART NO. NO.

KEY PART NO.	NO.	DESCRIPTION
1	59192	Cap, Valve, Tire
2	65139	Stem, Valve
3	106732X613	Rim Assembly, Front
4	59904	Tube, Front
5	106222X	Tire, Front 15 x 6-6
6	278H	Fitting, Grease
7	9040H	Bearing, Flange
8	104757X428	Cap, Axle (Front Wheel Only)
9	138468	Tire, Rear 20 x 8-8
10	7152J	Tube, Rear
11	106108X613	Rim Assembly, Rear
--	144334	Sealant, Tire (10 oz. Tube)

**NOTE:** All component dimensions given in U.S. inches  
1 inch = 25.4 mm

---

# SERVICE NOTES

---

# TRACTOR - - MODEL NUMBER 944.604230

## BRIGGS ENGINE - MODEL NUMBER 33R877, TYPE NUMBER 0017-G1

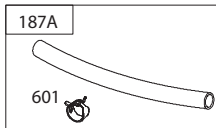
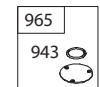
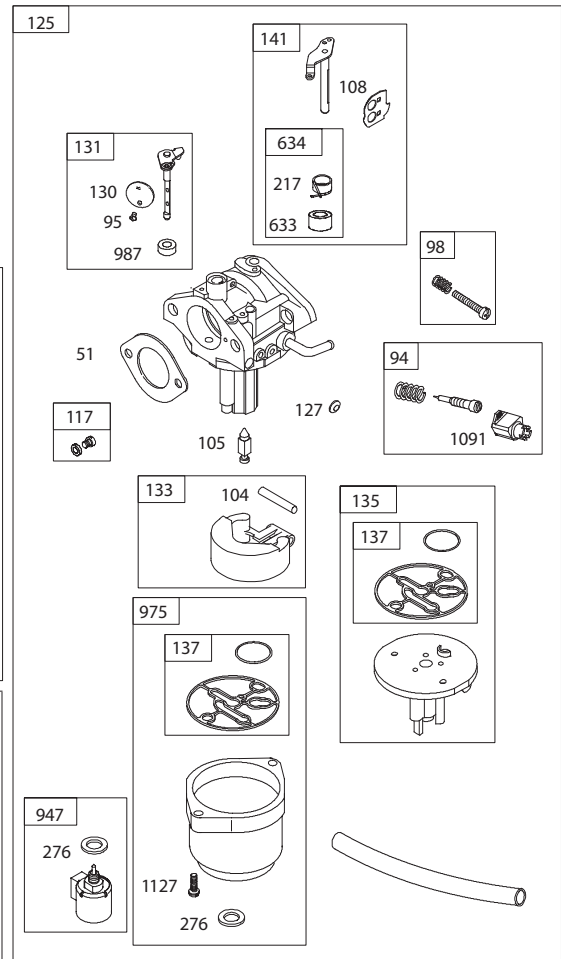
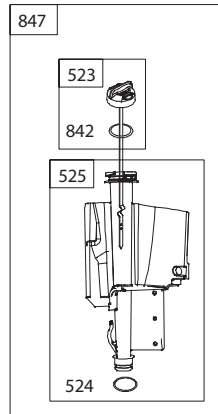
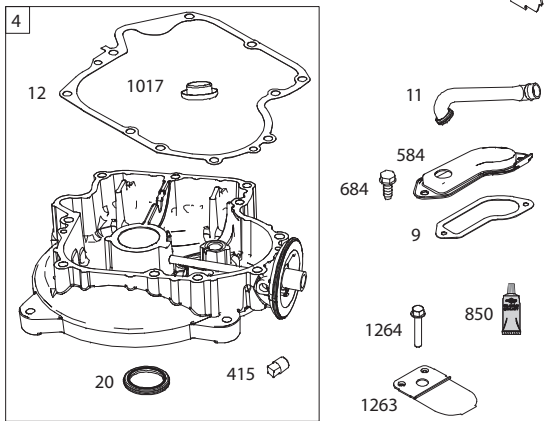
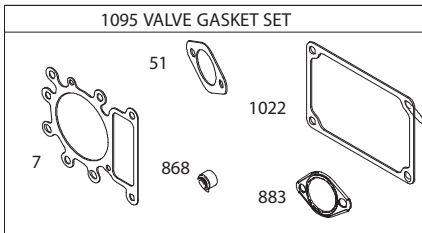
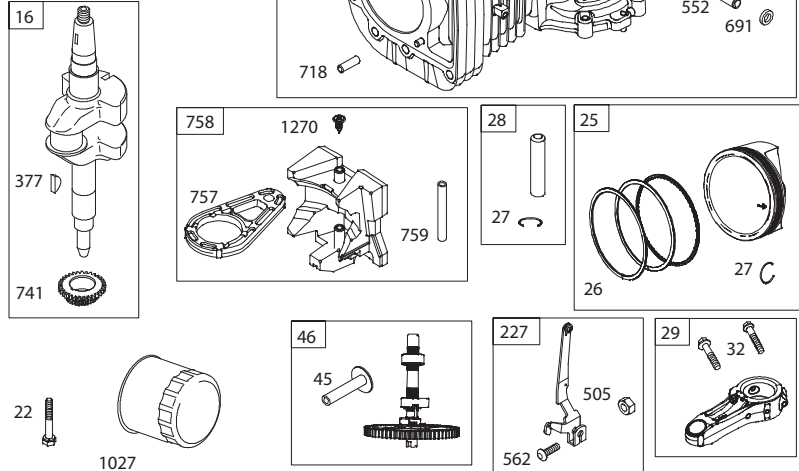
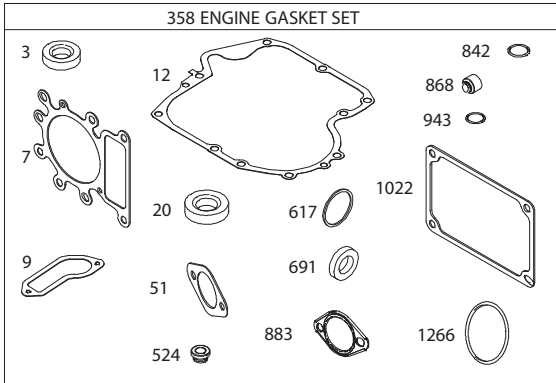
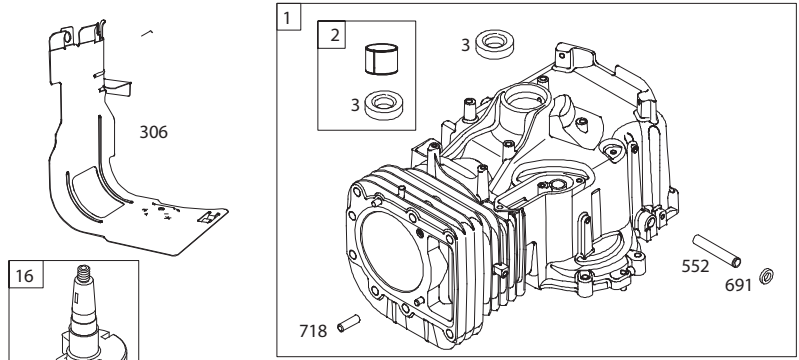
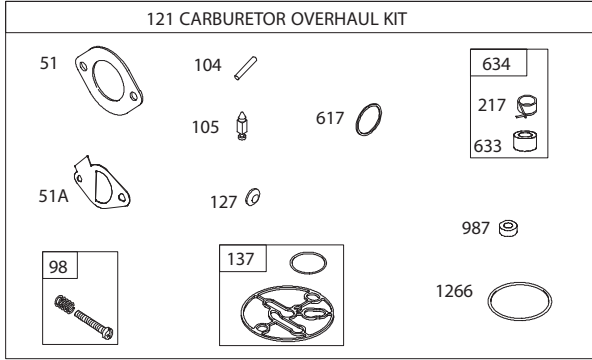
48 SHORT BLOCK

1036 EMISSIONS L LABEL

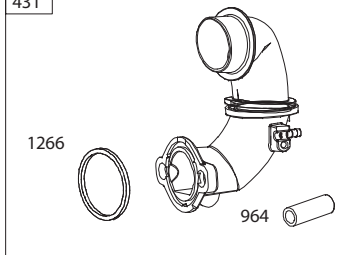
1058 OPERATOR'S MANUAL

1329 REPLACEMENT ENGINE

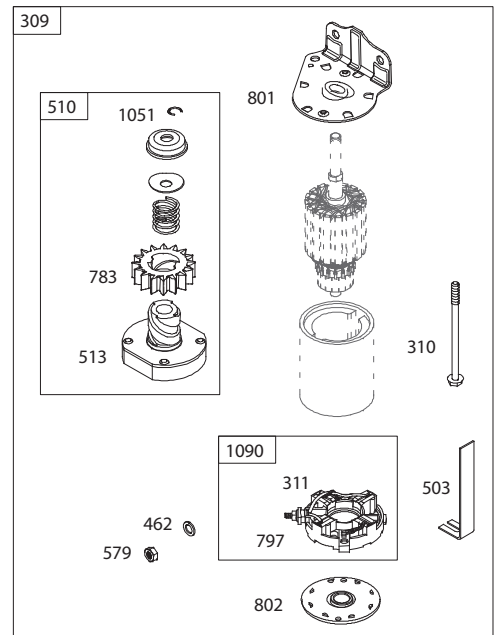
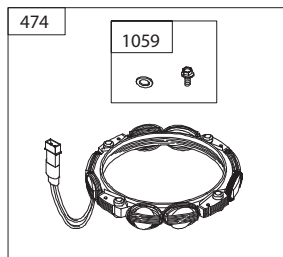
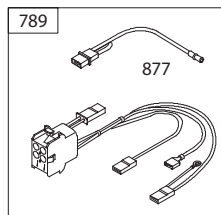
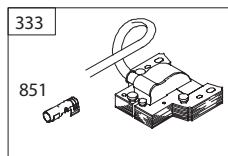
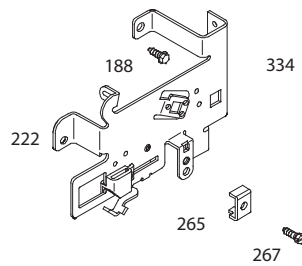
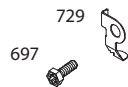
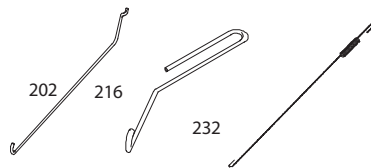
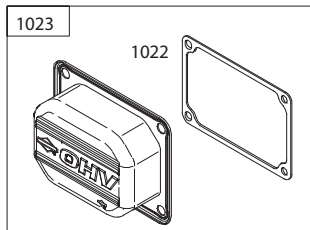
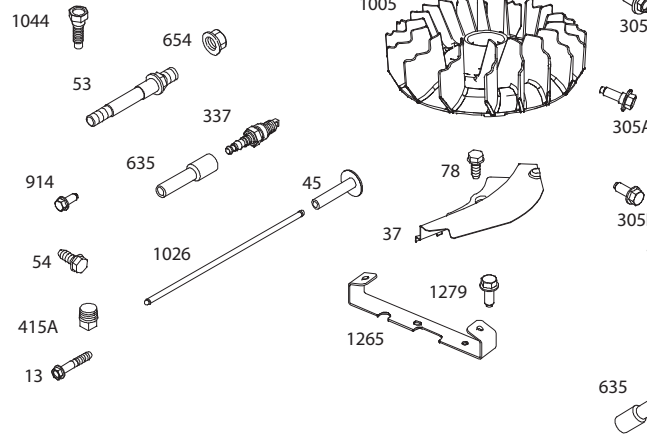
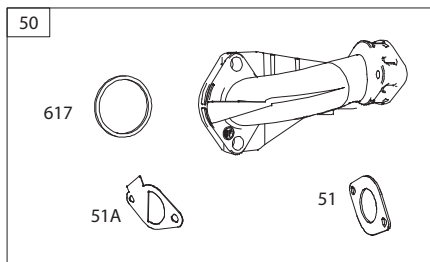
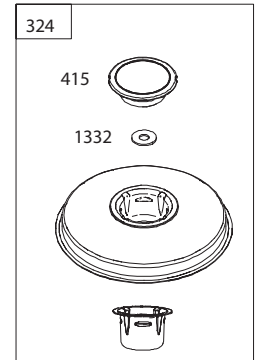
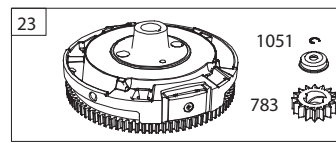
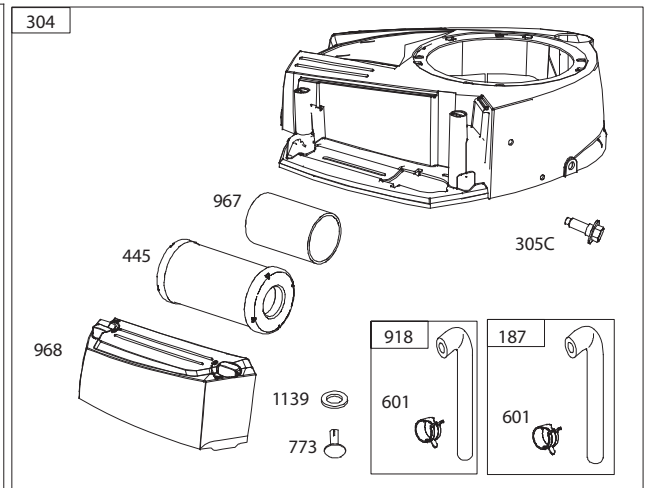
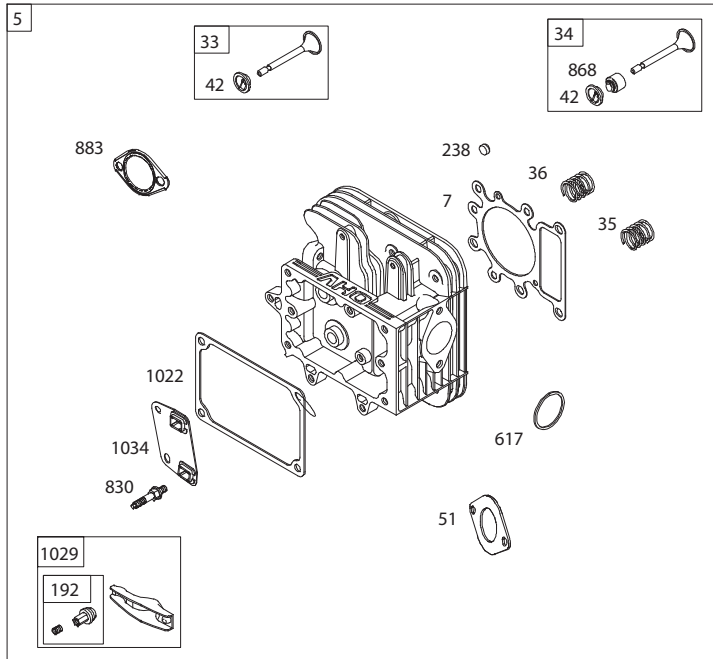
1330 REPAIR MANUAL



431



**TRACTOR - - MODEL NUMBER 944.604230**  
**BRIGGS ENGINE - MODEL NUMBER 33R877, TYPE NUMBER 0017-G1**



**TRACTOR - - MODEL NUMBER 944.604230**  
**BRIGGS ENGINE - MODEL NUMBER 33R877, TYPE NUMBER 0017-G1**

KEY NO.	PART NO.	DESCRIPTION	KEY NO.	PART NO.	DESCRIPTION
1	591465	Cylinder Assembly	127	690727	Plug-Welch
2	797673	Kit-Bushing/Seal (Magneto Side)	130	792747	Valve-Throttle
3	391086s	Seal-Oil (Magneto Side)	131	792765	Kit-Throttle Shaft
4	592849	Sump-Engine	133	694914	Float-Carburetor
5	591750	Head-Cylinder	135	698780	Tube-Fuel Transfer
7	794114	Gasket-Cylinder Head	137	698781	Gasket-Float Bowl
9	697109	Gasket-Breather	141	592937	Kit-Choke Shaft
11	794683	Tube-Breather	187	791805	Line-Fuel (Formed)
12	697110	Gasket-Crankcase	187A	791766	Line-Fuel (Cut to Required Length)
13	592244	Screw (Cylinder Head)	188	691693	Screw (Control Bracket)
15	690946	Plug-Oil Drain	192	691986	Adjuster-Rocker Arm
16	591763	Crankshaft	202	691841	Link-Mechanical Governor
20	795387	Seal-Oil (PTO Side)	209	796260	Spring-Governor (Green)
22	692125	Screw (Crankcase Cover/Sump)	216	691840	Link-Choke
23	591759	Flywheel	217	695409	Spring-Choke Return
24	591757	Key-Flywheel (Steel)	222	694042	Bracket-Control
25	795858	Piston Assembly (Standard)	227	691374	Lever-Governor Control
	795877	Piston Assembly (.020" Oversize)	232	691842	Spring-Governor Link
26	794126	Ring Set (Standard)	238	691843	Cap-Valve
	794127	Ring Set (.020" Oversize)	240	691035	Filter-Fuel
27	698469	Lock-Piston Pin	265	691024	Clamp-Casing
28	795861	Pin-Piston	267	794904	Screw (Casing Clamp)
29	794571	Rod-Connecting	276	695410	Washer-Sealing
32	791118	Screw (Connecting Rod)	304	592814	Housing-Blower
33	591752	Valve-Exhaust	305	697102	Screw (Blower Housing) (1/4-20x1.21)
34	591751	Valve-Intake	305A	793376	Screw (Blower Housing) (1/4-20x.68)
35	691279	Spring-Valve (Intake)	305B	795891	Screw (Blower Housing to Itake Elbow) (#10-16x.43)
36	691279	Spring-Valve (Exhaust)	305C	799370	Screw (Blower Housing) (1/4-20x.90)
37	699882	Guard-Flywheel	306	794953	Shield-Cylinder
42	499586	Keeper-Valve	307	691693	Screw (Cylinder Shield)
43	691968	Slinger-Governor/Oil	309	693551	Motor-Starter
45	690564	Tappet-Valve	310	690323	Screw (Starter Motor)
46	793880	Camshaft	311	497608	Brush Set
48	N/A	Short Block (Not Available at this Printing)	324	796309	Screen/Cup Assembly
50	592842	Manifold-Intake	333	592841	Armature-Magneto
51	692137	Gasket-Intake	334	691061	Screw (Magneto Armature)
51A	796081	Gasket-Intake	337	793541	Plug-Spark
53	591260	Stud (Carburetor)	358	796187	Gasket Set-Engine
54	691148	Screw (Intake Manifold)	377	691639	Key-Woodruff
78	691693	Screw (Flywheel Guard)	404	691691	Washer (Governor Crank)
94	793610	Kit-Idle Mixture	415	794129	Plug (Cover/Retainer)
95	690718	Screw (Throttle Valve)	415A	794903	Plug (Intake Manifold)
98	695408	Kit-Idle Speed	431	799043	Elbow-Intake
104	694918	Pin-Float Hinge	445	793569	Filter-Air Cleaner Cartridge
105	696136	Valve-Float Needle	462	691261	Washer (Starter Cable)
108	695419	Valve-Choke	474	592831	Alternator
117	796251	Jet-Main (Standard)	503	691532	Strap-Starter
118	791406	Jet-Main (High Altitude)	505	691251	Nut (Governor Control Lever)
121	796184	Kit-Carburetor Overhaul			
125	591736	Carburetor			

**TRACTOR - - MODEL NUMBER 944.604230**  
**BRIGGS ENGINE - MODEL NUMBER 33R877, TYPE NUMBER 0017-G1**

KEY NO.	PART NO.	DESCRIPTION	KEY NO.	PART NO.	DESCRIPTION
510	693699	Drive-Starter	975	699502	Bowl-Fuel
513	692024	Clutch-Drive	987	698777	Seal-Throttle Shaft
523	699908	Dipstick	1005	796084	Fan-Flywheel
524	691032	Seal-Dipstick Tube	1017	796981	Screen-Oil Pump
525	697184	Tube-Dipstick	1022	272475s	Gasket-Rocker Cover
552	697144	Bushing-Governor Crank	1023	797421	Cover-Rocker
562	691119	Screw (Governor Control Lever)	1024	794644	Pump-Oil
579	691029	Nut (Starter Cable)	1026	692003	Rod-Push (Intake) (Aluminum)
584	794682	Cover-Breather Passage		692011	Rod-Push (Exhaust) (Steel)
601	791850	Hose-Clamp (Green)	1027	795890	Filter-Oil
614	691620	Pin-Cotter (Governor Crank)	1029	691751	Arm-Rocker
616	692012	Crank-Governor	1034	690822	Guide-Push Rod
617	692138	Seal-O Ring (Intake Manifold) (Red)	1036		Label-Emissions (Available from a Briggs & Stratton Authorized Dealer)
633	699813	Seal-Choke/Throttle (Choke Shaft)	1040	698368	Plate-Trim
634	698779	Spring/Seal Assembly	1044	698139	Screw (Flywheel)
635	691909	Boot-Spark Plug	1051	691265	Ring-Retaining
654	690958	Nut (Carburetor) (Serrated)	1058	277675	Operator's Manual
684	697157	Screw (Breather Passage Cover)	1059	698516	Kit-Screw/Washer (Alternator)
691	692407	Seal-Governor Shaft	1090	691293	Retainer-Brush
697	791680	Screw (Drive Cap)	1091	691333	Cap-Limiter
718	690959	Pin-Locating	1095	794152	Gasket Set-Valve
729	691224	Clip-Wire	1119	691183	Screw (Alternator)
741	697128	Gear-Timing	1127	695407	Screw (Float Bowl)
750	790832	Screw (Oil Pump Cover)	1139	796449	Washer (Fuel Pump)
757	793242	Link-Counterweight	1263	697124	Reed-Breather
758	793763	Counterweight	1264	697104	Screw (Breather Reed)
759	697392	Pin-Counterweight	1265	794151	Support-Blower Housing
773	796448	Retainer (Fuel Pump)	1266	691917	Seal-O Ring (Intake Elbow) (Red)
783	693713	Gear-Pinion	1270	793243	Plug-AVS Counterweight
789	698329	Harness-Wiring	1279	691108	Screw (Blower Housing Sup port)
797	693167	Nut (Brush Retainer)			
801	691283	Cap-Drive	1329	N/A	Replacement Engine (Not Avail able at this Printing)
802	691286	Cap-End			
830	691095	Stud-Rocker Arm	1330	N/A	Repair Manual (Not Available at this Printing)
842	691031	Seal-O Ring (Dipstick)			
847	790442	Dipstick/Tube Assembly	1332	591991	Washer (Rotating Screen)
850	100106	Sealant-Liquid			
851	692424	Terminal-Spark Plug			
868	690968	Seal-Valve			
877	790544	Wire/Connector-Alternator			
883	692236	Gasket-Exhaust			
914	691108	Screw (Rocker Cover)			
918	791744	Hose-Vacuum (Cut to Required Length)			
943	690589	Seal-O Ring (Oil Pump Cover)			
947	699915	Solenoid-Fuel			
964	799159	Cap-Connector			
965	499613	Cover-Oil Pump			
967	793685	Filter-Pre Cleaner			
968	591644	Cover-Air Cleaner			

Carburetor Overhaul Kit	Key No. 121
Engine Gasket Set	Key No. 358
Valve Gasket Set	Key No. 1095

**NOTE:** All component dimensions given in U.S. inches  
1 inch = 25.4 mm

# Get it fixed, at your home or ours!

Just Call:

**1-800-4-MY-HOME<sup>®</sup>**

(1-800-469-4663)

24 hours a day, 7 days a week

For the repair of major brand appliances **in your own home...**  
no matter who made it, no matter who sold it!

For your nearest **Sears Parts and Service** location,  
to bring in products like vacuums, lawn equipment and electronics.

For **Sears Parts & Service**, to order the replacement parts,  
accessories and owner's manuals that you need to do-it-yourself.

[www.sears.ca](http://www.sears.ca)

---

To purchase or inquire about a Sears Maintenance Agreement, call:

**1-800-361-6665**

9 a.m. – 11 p.m. Mon. – Fri., EST, 9 a.m. – 4 p.m. Sat.

---

Pour service en français:

**1-800-LE-FOYER<sup>MC</sup>**

(1-800-533-6937)

[www.sears.ca](http://www.sears.ca)



® / <sup>TM</sup> Trademarks of Sears Brands Management Corporation used under license by Sears Canada

<sup>MD</sup> Marque déposée / <sup>MC</sup> Marque de commerce de Sears Brands Management Corporation utilisée en vertu d'une licence de Sears Canada