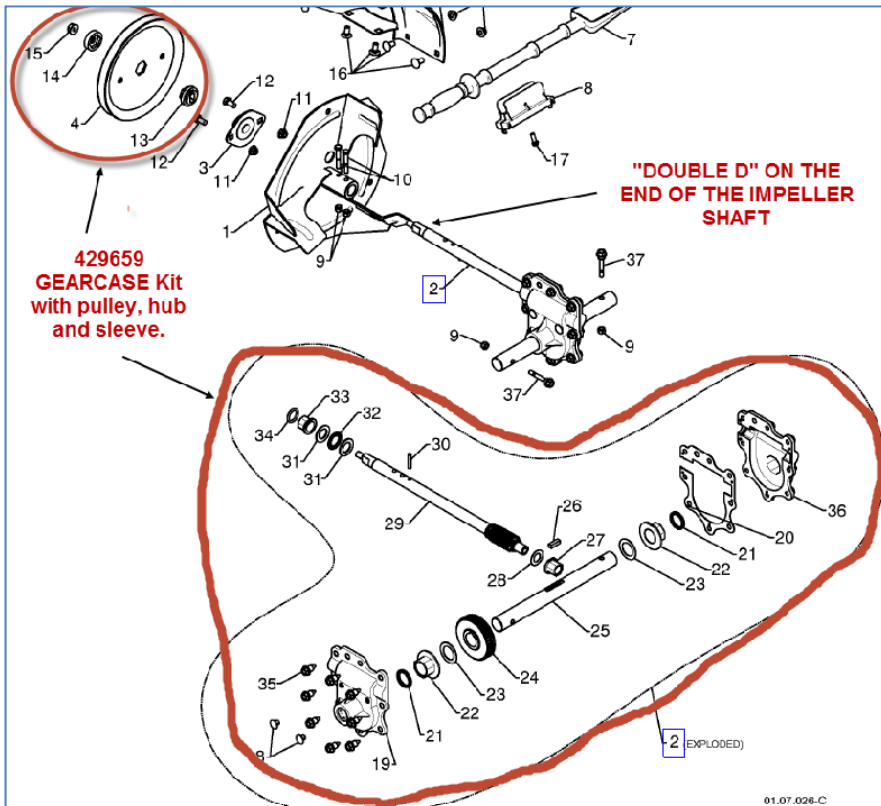
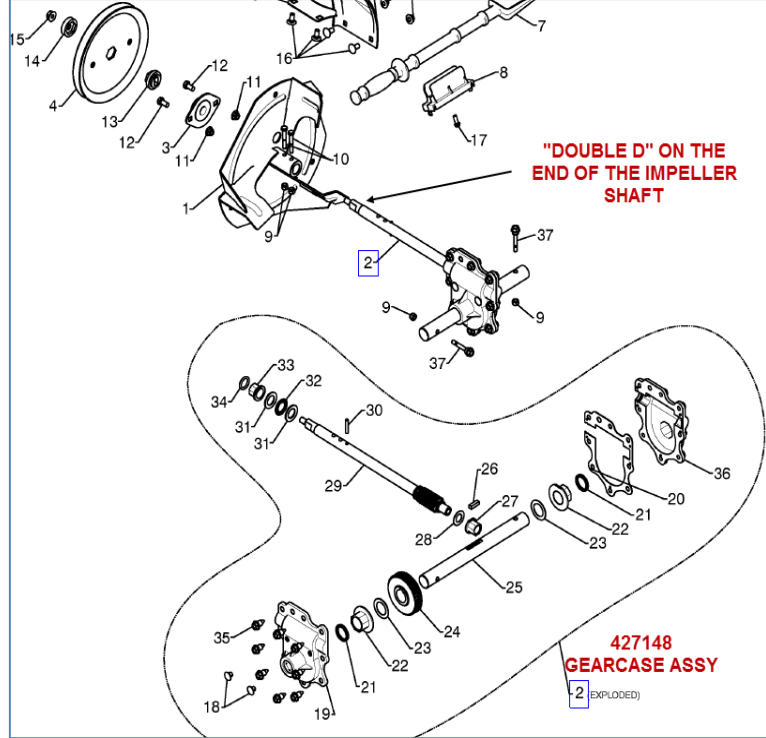
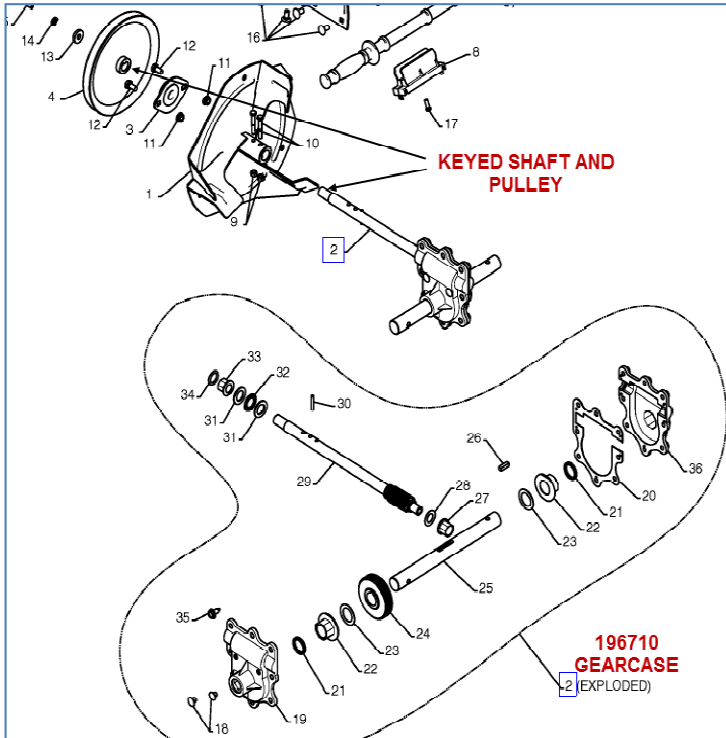


Snow Blower Parts Update Feb 04/14

Please note that the **407763** or **174659** Spur gear (#24 in the Drawings below) used in the Auger gearbox is NLA. It has been subbed to either: **196710** Keyed impeller shaft Gear case (early models) or the **427148** "Double D" Impeller shaft Gear case (used on later models).



Or another solution is to use **429659** Update Gear case kit that comes with the "Double D" Impeller shaft as well as the Impeller Pulley, Double D Adaptor, sleeve and nut, if you want to update the old keyed impeller shaft to the new "Double D" style of gear case.