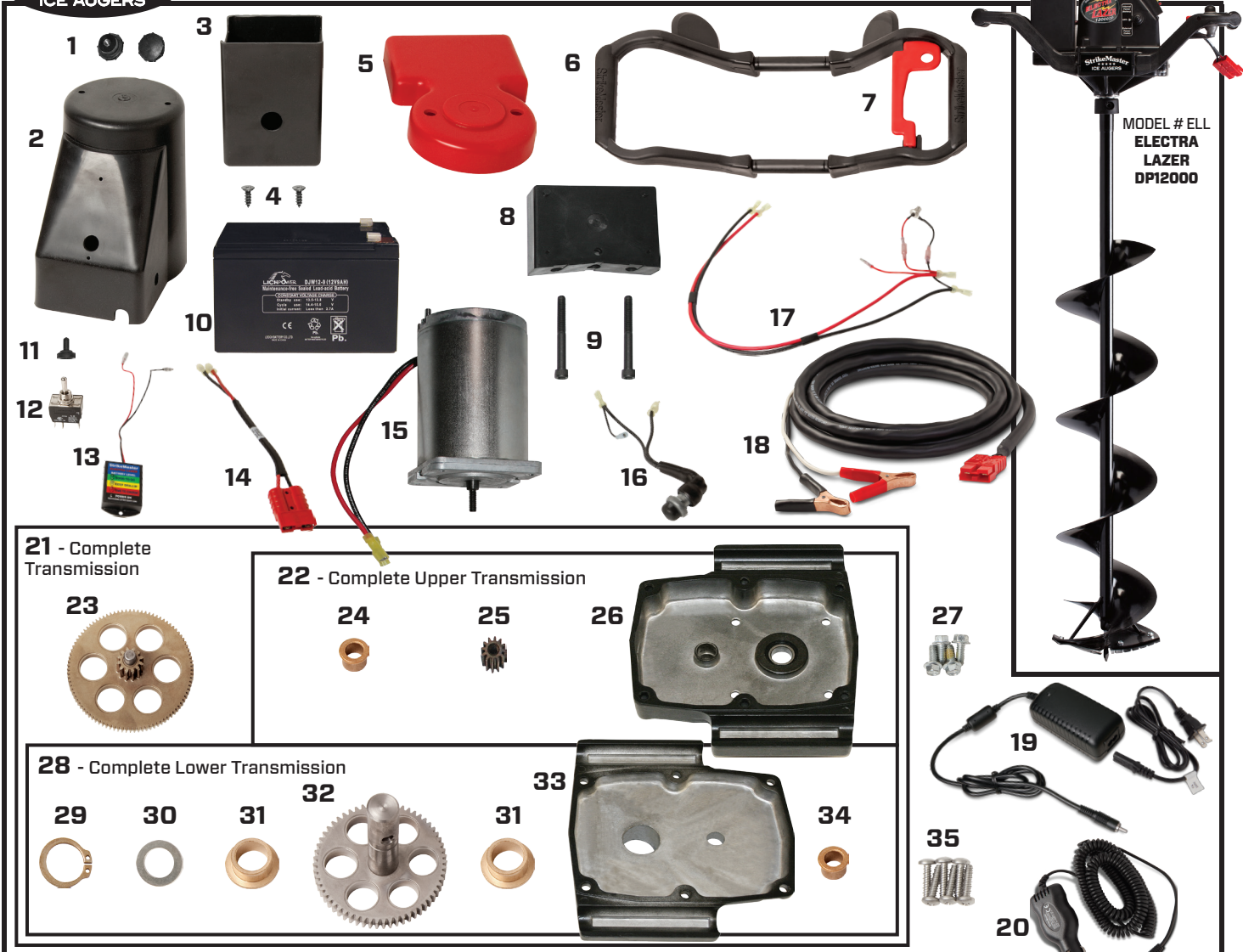




# ELL - ELECTRA LAZER DP12000 2009-2012 Parts List



MODEL # ELL  
ELECTRA  
LAZER  
DP12000

#	Part No.	Description	Qty
1	151322	Battery Cover Knobs	2
2	151348	Electra Motor Cover	1
3	151312-09	Battery Box	1
4	410030	Battery Box Screws	2
5	151319-09	Motor/Battery Box	1
6	151388E	Composite Handle with Lever	1
7	151645E	Throttle Lever with Screw	1
8	151321-09	Battery Mounting Bracket	1
9	151338	5/16-18 x 3 SHCS Bracket Bolt	2
10	ERB-1	12-volt/9-amp Battery Replacement	1
11	151318	Toggle Switch Boot	1
12	151317	Internal/External Toggle Switch	1
13	151310-09	Battery Meter	1
14	151320-09	Power Pole Assembly	1
15	151438	ELL Motor	1
16	151336-09	60-amp Push Button Switch Assembly	1
17	151315-09	DC Power Assembly with Charger Plug	1
18	151358	Power Cord with Battery Clamps	1
19	EBC-1	12-volt Battery Charger Plug-in (Wall Outlet Adapter)	1
20	ECC-2	1.0-amp Car Charger Plug-in	1

#	Part No.	Description	Qty
21	211 T	Complete Transmission (Includes Aluminum Case, #22-Upper, #28-Lower & #23-Gear)	1
22	211 T-U	Complete Upper Transmission (Includes #24, 25 & 26-Aluminum Case )	1
23	211310	40:1 Compound Gear	1
24	122210	Flange Bushing Compound (Upper)	1
26	140320	40:1 Pinion Gear	1
26	140110	Transmission Aluminum Case (Upper-must order #21 or 22)	1
27	470840	Upper Transmission Bolt - 6mm x 1 x 40mm	4
28	211 T-L	Complete Lower Transmission (Includes #29,30,31,32, 33-Aluminum Case & 34)	1
29	122920	Snap Ring Output Shaft	1
30	122915	Output Shaft Washer	1
31	122215	Flange Bushing Output Shaft	2
32	122305	Output Shaft with Drive Gear	1
33	122105	Transmission Aluminum Case (Lower-must order #21 or 28)	1
34	122210	Flange Bushing Compound (Lower)	1
35	410011A	1/4 x 20 x 1 Lower Trans Screws Self Tap Philips	6

If your auger is still under warranty, please contact StrikeMaster Customer Service at [service@normarkcanada.com](mailto:service@normarkcanada.com). Please be advised, work performed outside of an authorized service center will void your StrikeMaster warranty. To purchase the parts listed, please contact one of our Canadian master service centers. SM10/14