

PARTS MANUAL

Models

EH035VX0304

**For Strike Master
ENGINE**

PUB-EP
Rev. 01/07

Robin America, Inc.

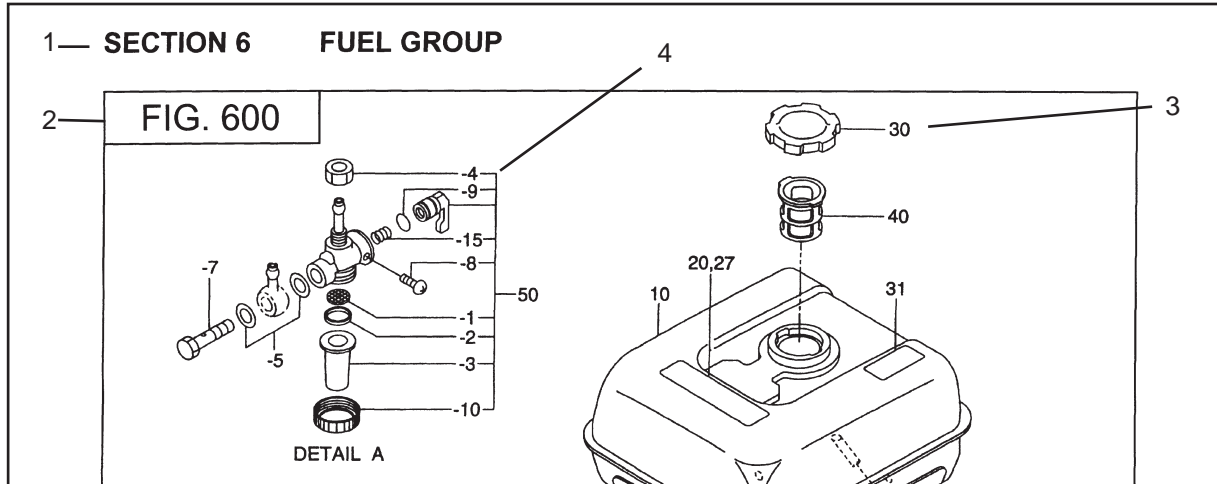
940 Lively Blvd. • Wood Dale, IL 60191 • Phone: 630-350-8200 • Fax: 630-350-8212
e-mail: sales@robinamerica.com • www.robinamerica.com

© Copyright 2005 Robin America, Inc.

HOW TO USE THIS MANUAL

REF.	PART NO.	DESCRIPTION	QTY.	REMARKS	FROM-TO	FIG.
		<p>Robin engines are identified by MODEL, SPECIFICATION, and CODE NUMBER. For each model there may be many different versions called specifications. Each specification will be unique in some way. The difference may only be the paint color or it may have a different type of PTO or some other significant difference.</p>				
		<p>In order to identify the correct service part number, it is important to confirm the specification and code numbers for your engine. The specification and code number together are known as the PRODUCT NUMBER.</p>				
		<p>All Robin 4 cycle engines have a Product Number label similar to the label illustrated below.</p>				
		<p>The Product Number Label has a 15 digit alphanumeric string that consists of the SPECIFICATION (SPEC) number (11 digits) and the CODE number (4 digits). Please note the illustration below:</p>				
		<p>EH035 □ □ □ □ □ XXXX</p>				
		<p>SPEC NO. (11 digits) CODE NO. (4 digits)</p>				
		<p>PRODUCT NO. (15 digits)</p>				

MANUAL LAYOUT



REF.	PART NO.	DESCRIPTION	QTY.	REMARKS	FROM-TO	FIG.
10	267-60103-01	FUEL TANK CP	1	YD, YS TYPE, BLACK		600
	267-60101-01	FUEL TANK CP	1	YELLOW		600
27	073-20039-00	LABEL, WARNING	1	YD, YS TYPE		600
30	043-04300-15	FUEL TANK CAP CP	1			600
31	267-95201-03	LABEL, EMISSION	1	YD, YS TYPE		600
40	064-13600-10	FUEL FILTER	1			600
50	064-20021-01	FUEL STRAINER AY	1			600
-1	064-20002-20	FILTER	1			600
-2	064-20002-30	GASKET	1			600
-3	064-20019-10	CUP	1			600

1. SECTION NAME Parts are broadly classified according to their functions. Refer to the Group Index (table of contents) for respective section name.
2. FIG. No. The FIG. number indexes the reference and part numbers to the illustration. Figure numbers that vary only in the tens place (i.e.: 700 and 710) are in a group of the same section (i.e.:Electrical Device Group).
3. REF. No . The Reference number identifies the part illustration with the corresponding part number in the part list.
4. SUBASSEMBLY SUBASSEMBLY parts of part assembly are listed below the assembly part. The subassembly part reference number is indicated by the number led by "-" such as "-1", "-2".
5. PART NUMBER It is the number assigned for sales unit. Use the PART No. when making an order.
6. DESCRIPTION It is designation of the part.
7. QTY. Quantity of each part used for each product.
8. REMARKS This gives a distinctive feature and/or a supplementary comment for the type, the specification, and the part concerned. It also shows part number(s) interchangeable for the part.
9. FROM-TO This section shows the CODE No. to indicate the history of progress in which improved parts have been introduced in the product. The FROM-TO CODE No. helps to identify PART No. being employed in the product concerned. See the examples below:
 - The part is used in the product irrespective of CODE No.
 - 2101- The part is used in the products with CODE No. of 2101 and after this number.
 - 2100 The part is used in the products with CODE No. of 2100 and before this number.

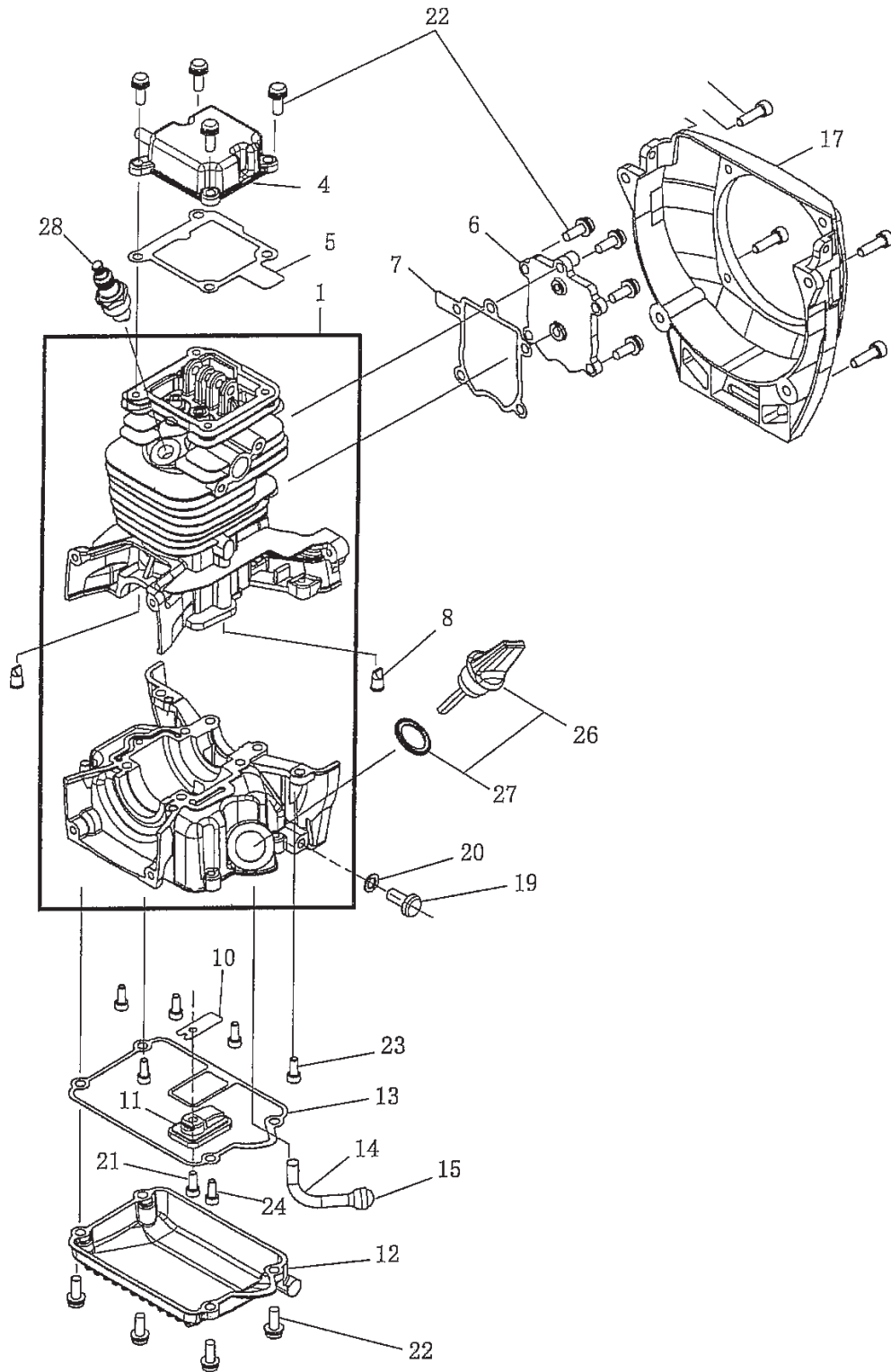
GROUP INDEX

Group Name	Page
CRANKCASE GROUP	6
CRANKSHAFT, PISTON GROUP	8
INTAKE and EXHAUST GROUP	10
COOLING and STARTING GROUP	12
FUEL, LUBRICANT GROUP	14
ELECTRIC DEVICE GROUP	16
CLUTCH GROUP	18
ACCESSORY GROUP	20

INDEX OF DESCRIPTION SYMBOLS			
SYMBOL	DESCRIPTION	SYMBOL	DESCRIPTION
AY	ASSEMBLY	P=	PITCH (in mm)
CP	COMPLETE	P.T.O. (PTO)	POWER TAKE OFF
EX	EXPORT (from Japan)	REF	REFERENCE
FIG	FIGURE	R.H. (RH)	RIGHT HAND SIDE
FR	FRONT	RR	REAR
"	INCH	STD.	STANDARD
INCL.	INCLUDE	SW	SWITCH
-L	LITER	T=	THICKNESS (in mm)
L=	LENGTH (in. mm)	UN	UNIT
L.H. (LH)	LEFT-HAND SIDE	U.S.	UNDER SIZE
MECH	MECHANICAL	~V	VOLTAGE
NO (NON)	NONE	~W	WATT
OPT	OPTIONAL	W/	WITH
O.S.	OVER SIZE	W/O	WITHOUT

SECTION 1 CRANKCASE GROUP

FIG. 100

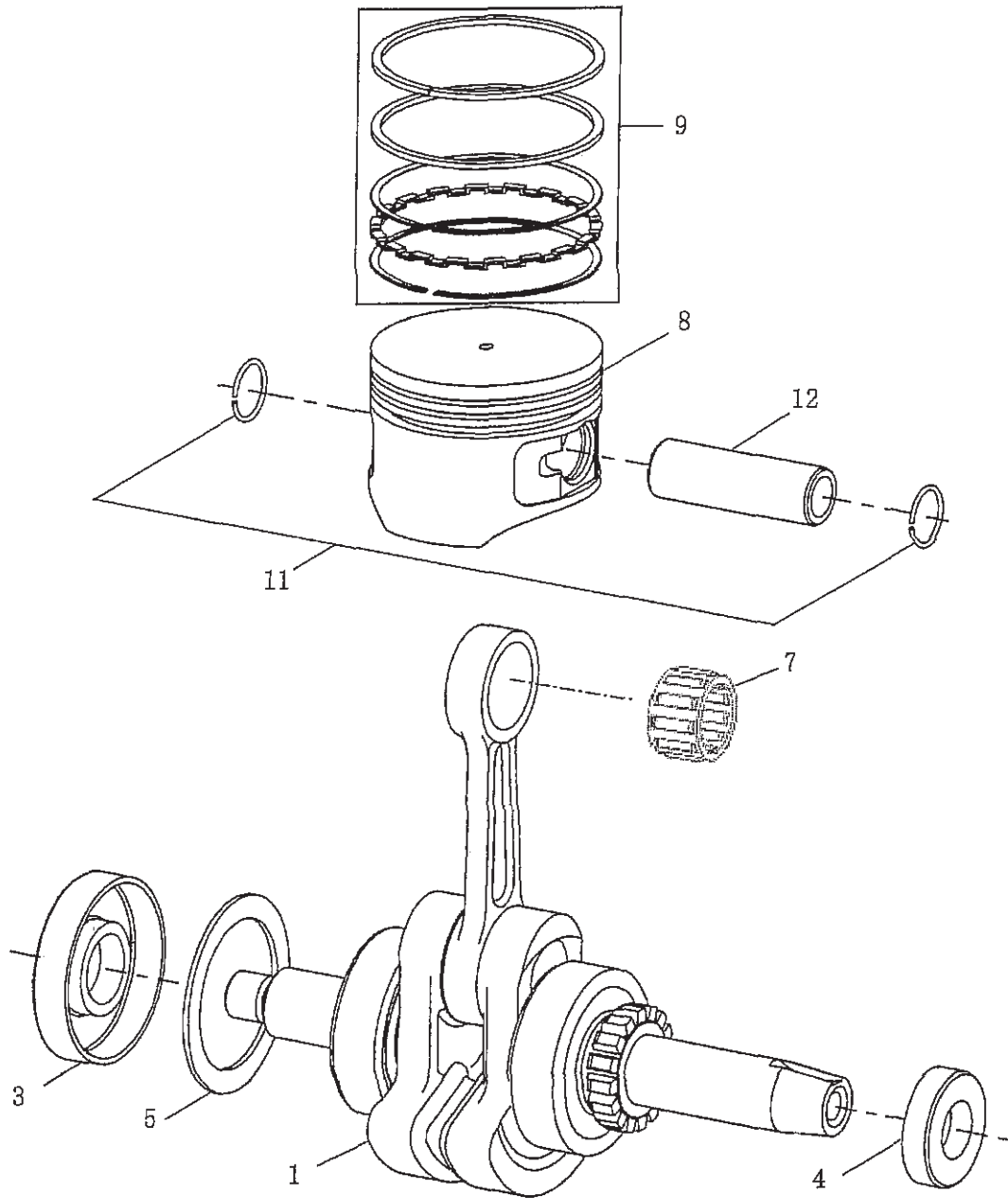


SECTION 1 CRANKCASE GROUP

REF.	PART NO.	DESCRIPTION	QTY.	REMARKS	FROM-TO	FIG.
1	593-10110-00	CYLINDER BLOCK SET	1			100
4	593-15014-00	ROCKER COVER	1			100
5	593-15016-00	GASKET, rocker cover	1			100
6	593-15015-00	CAMGEAR COVER	1			100
7	593-15017-00	GASKET, camgear cover	1			100
8	592-15018-00	CHECK VALVE	2			100
10	592-15010-00	LEAD VALVE	1			100
11	593-15013-00	RETAINER PLATE	1			100
12	593-65005-00	OIL CASE	1			100
13	593-65004-00	GASKET, case	1			100
14	593-65006-00	OIL TUBE	1			100
15	592-65003-00	OIL WEIGHT	1			100
17	593-55002-00-1	BLOWER HOUSING	1	i/w 593-55002-00		100
18	011-90595-31	SOCKET HEAD BOLT	4			100
19	004-31060-80	SCREW, panhead	1			100
20	003-71060-00	GASKET, fiber	1			100
21	011-90499-60	SOCKET HEAD BOLT	1			100
22	004-36051-60	SCREW AY	13	i/w 001-17051-60		100
23	011-90594-70	SOCKET HEAD BOLT	4			100
24	011-90598-60	SOCKET HEAD BOLT	4			100
26	592-65006-00	OIL GAUGE	1			100
27	021-31699-90	GASKET	1			100
28	065-01099-50	SPARK PLUG	1			100

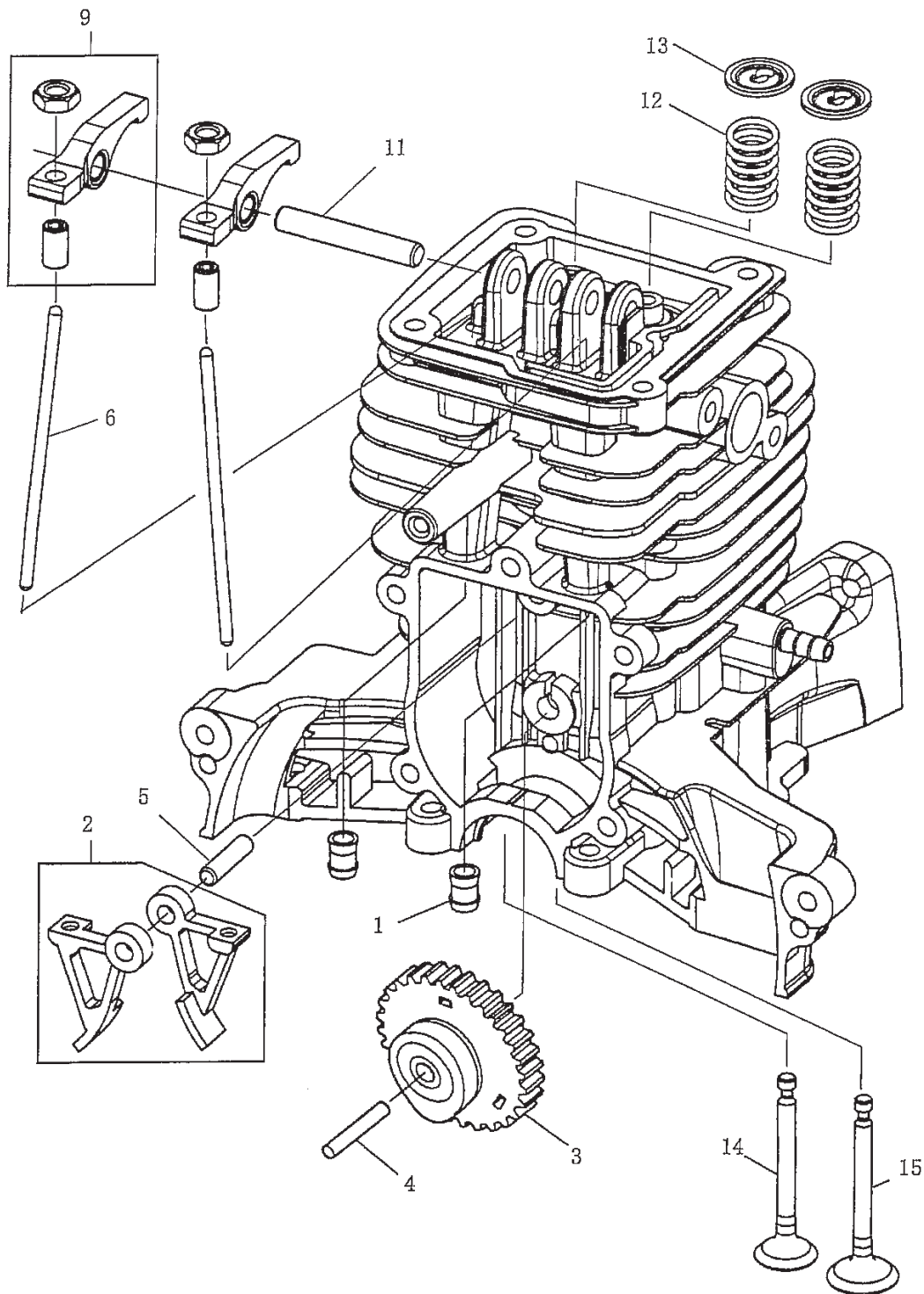
SECTION 2 CRANKSHAFT, PISTON GROUP

FIG. 200



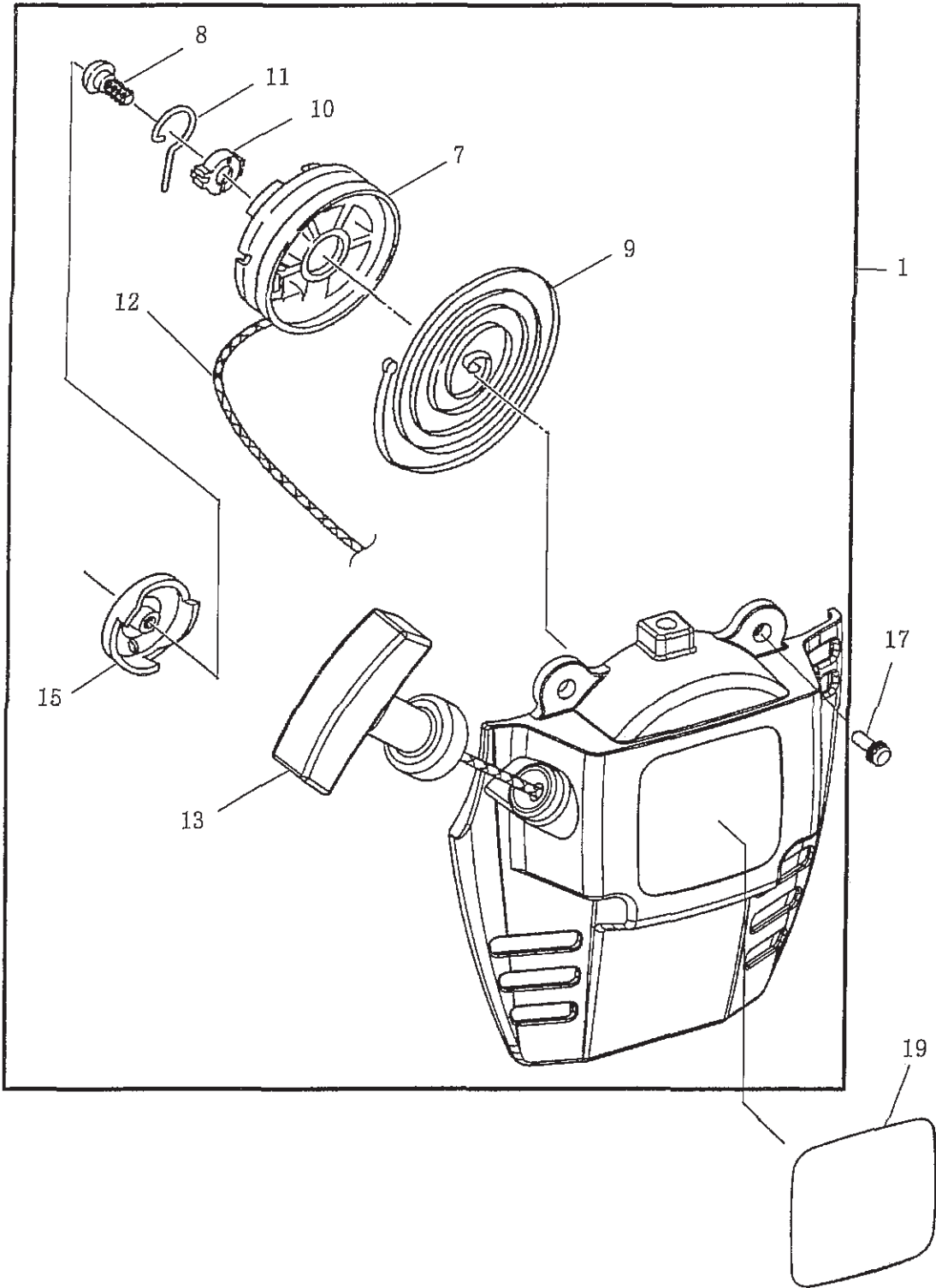
SECTION 3 CAMSHAFT GROUP

FIG. 300



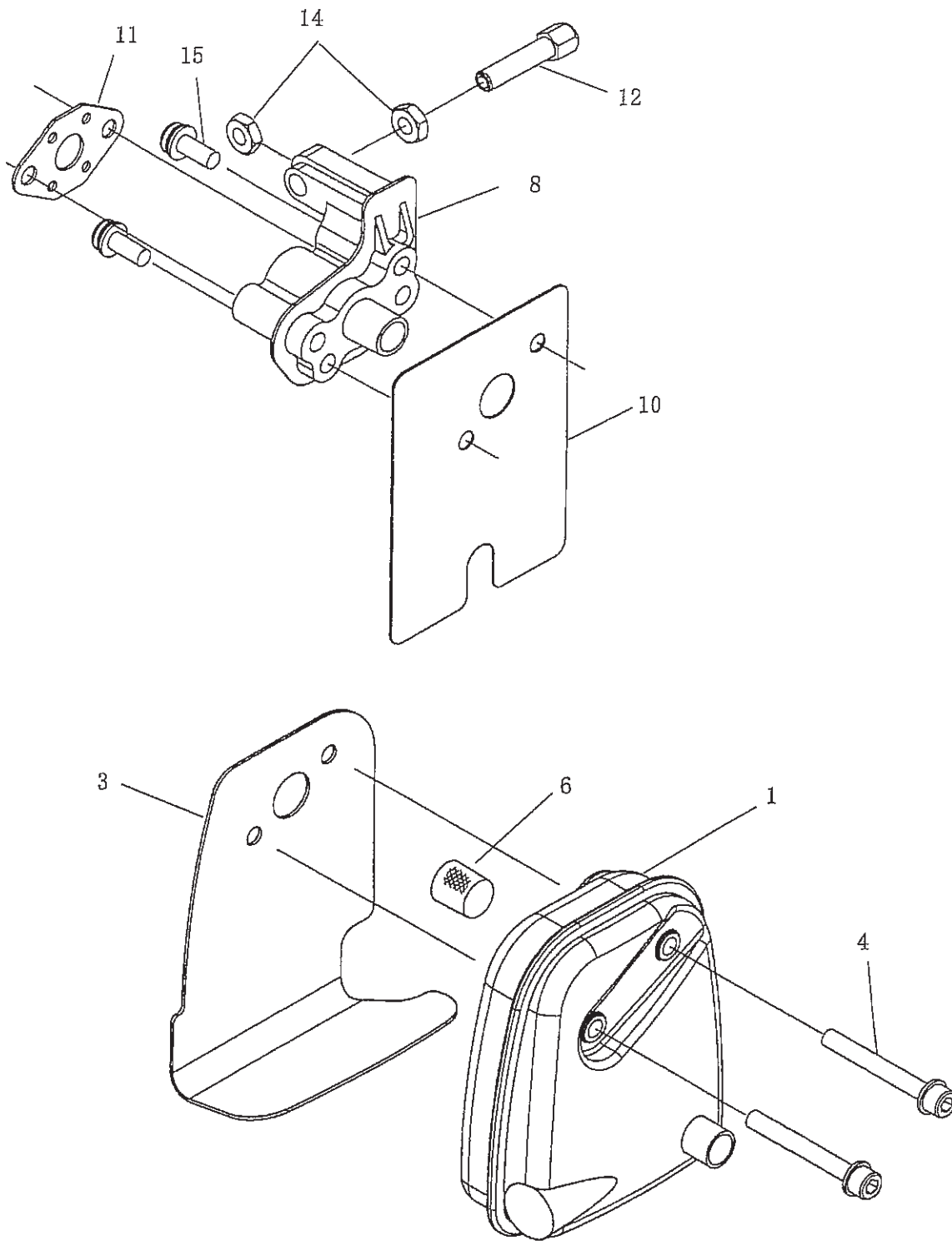
SECTION 4 RECOIL STARTER GROUP

FIG. 400



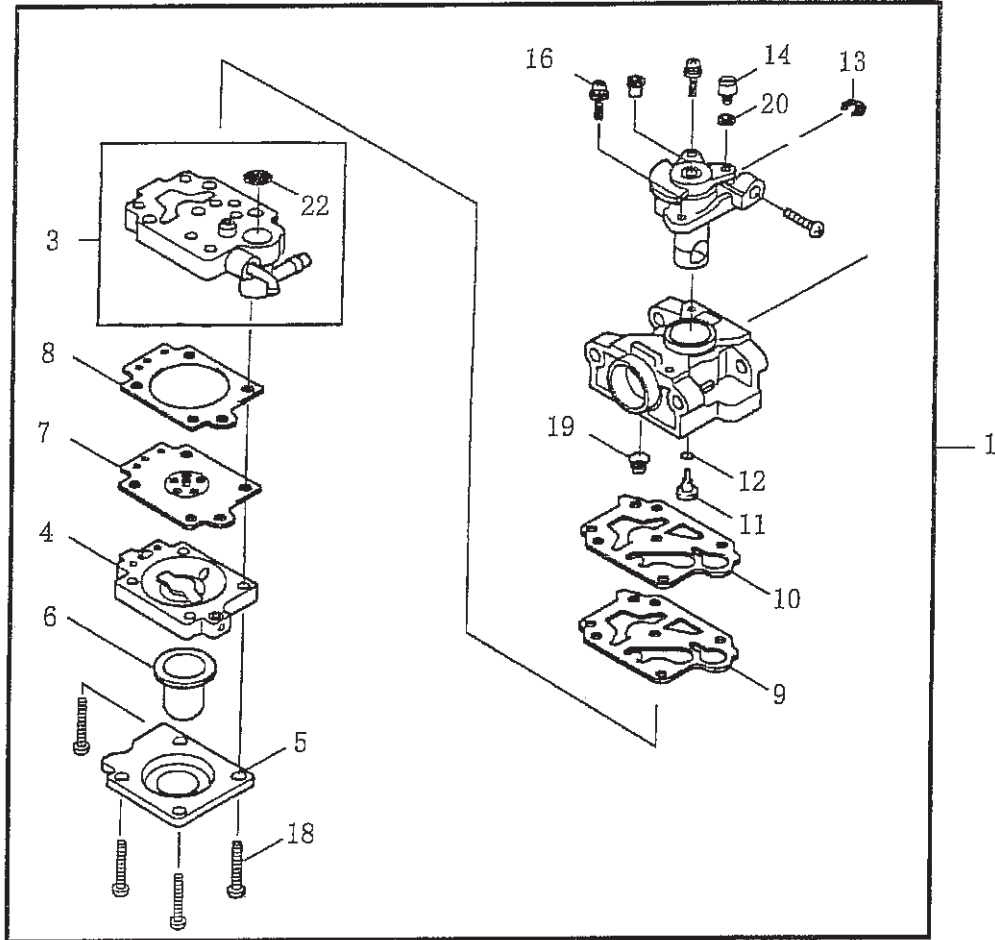
SECTION 5 MUFFLER & INSULATOR GROUP

FIG. 500



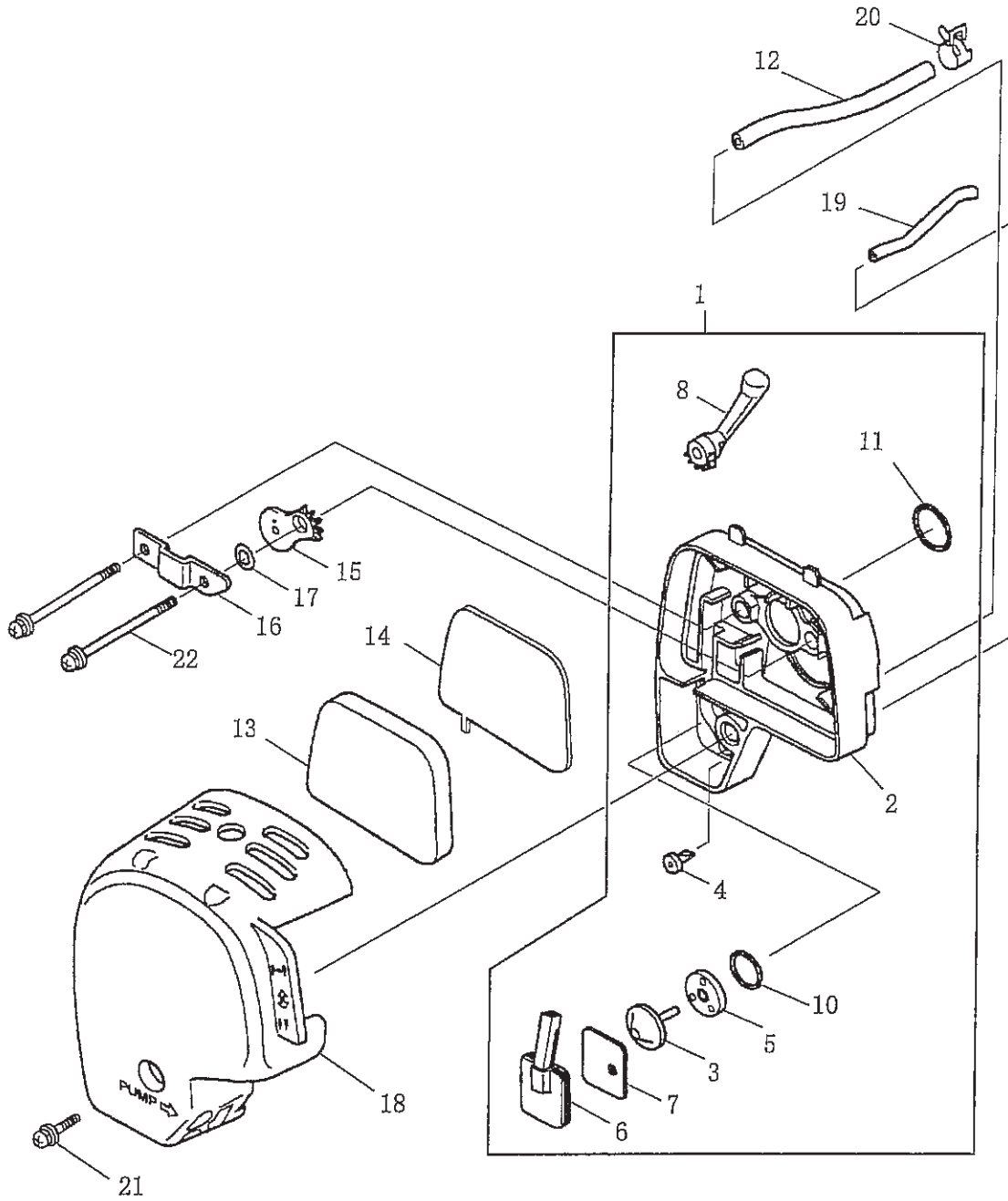
SECTION 6 CARBURETOR GROUP

FIG. 600



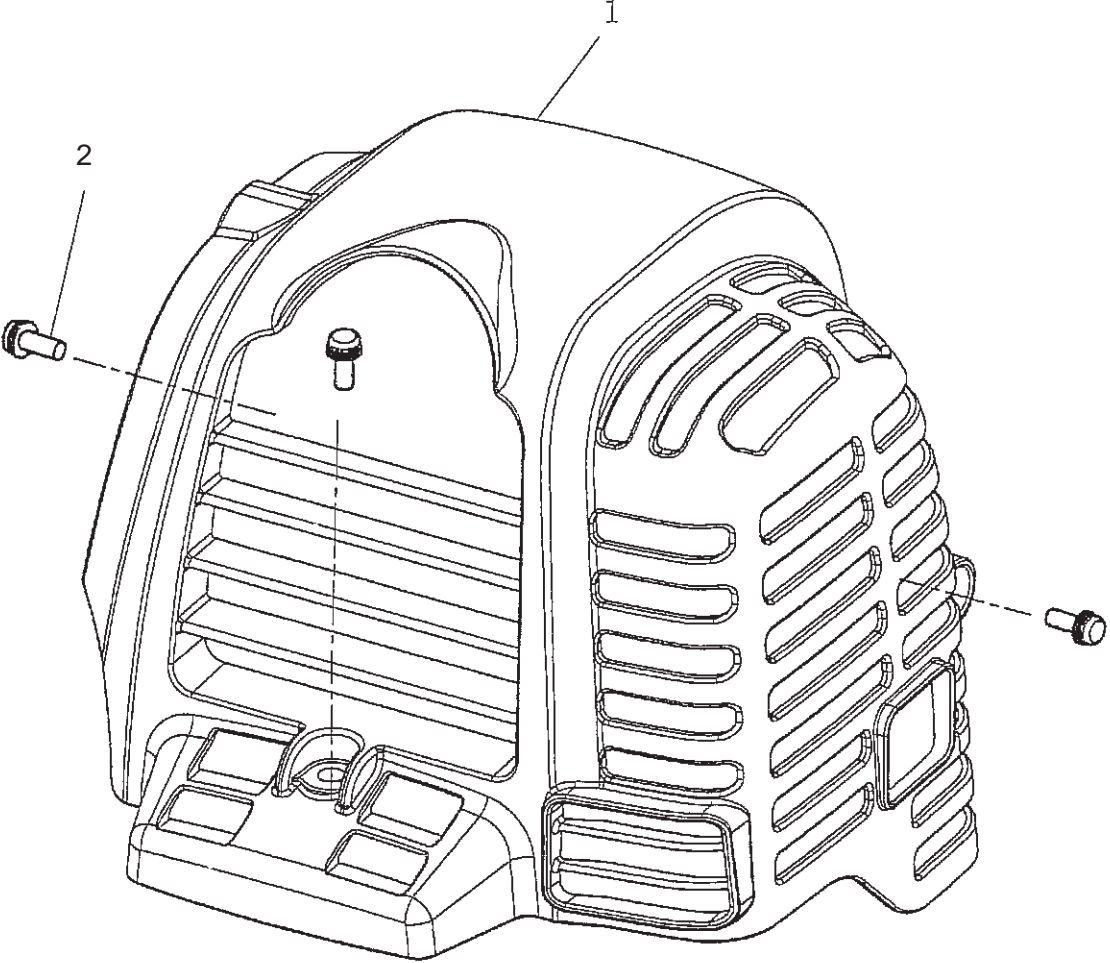
SECTION 7 AIR CLEANER GROUP

FIG. 700



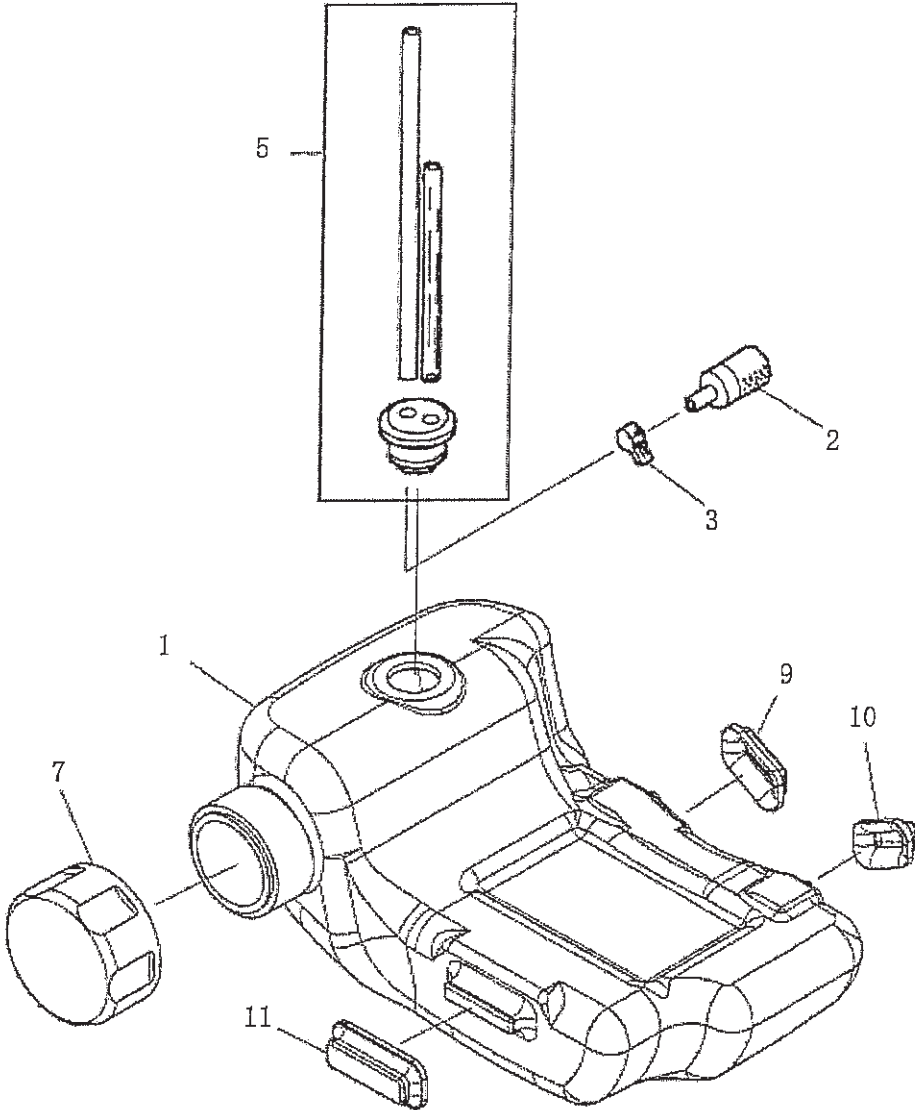
SECTION 8 CYLINDER COVER GROUP

FIG. 800



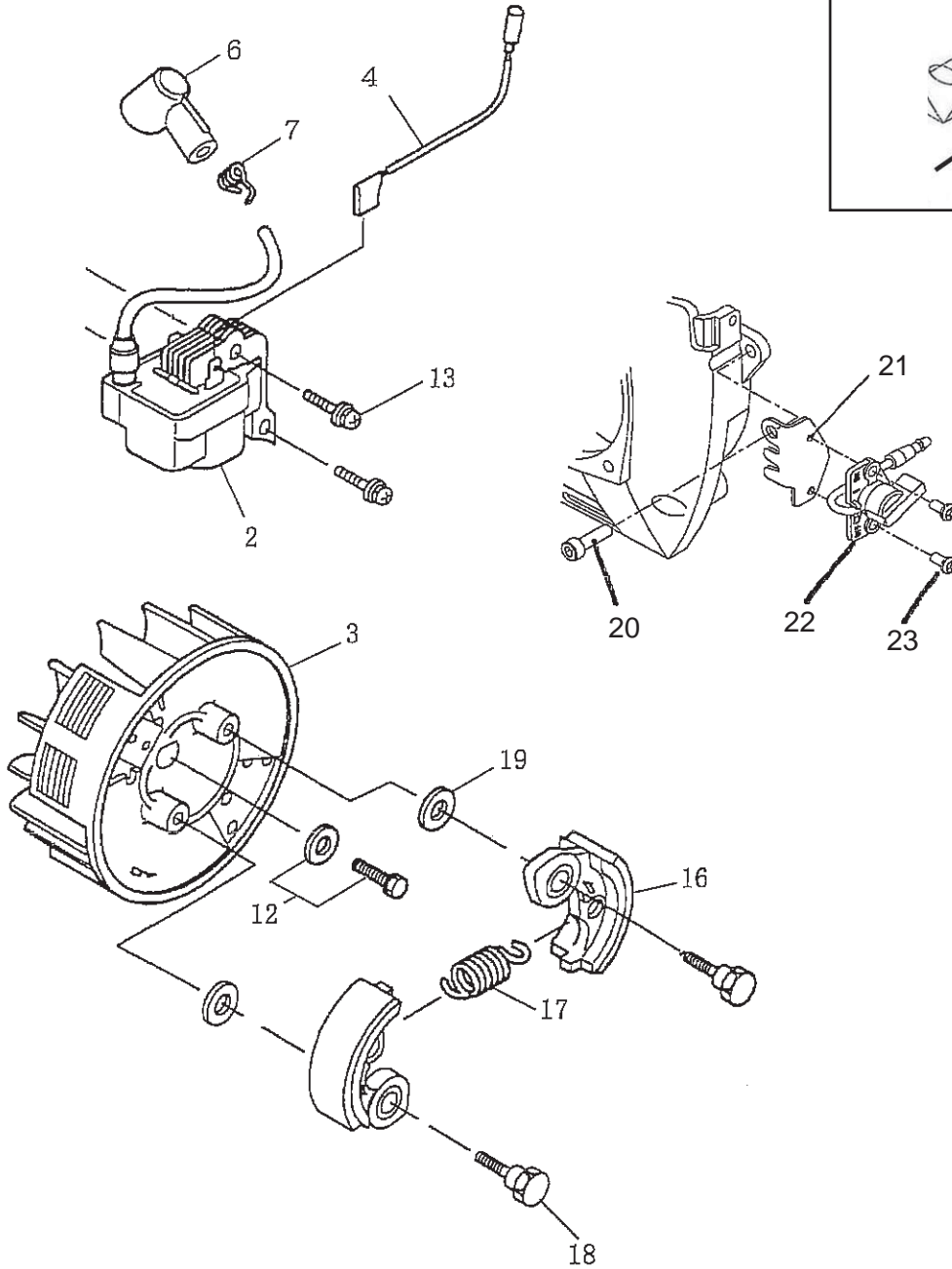
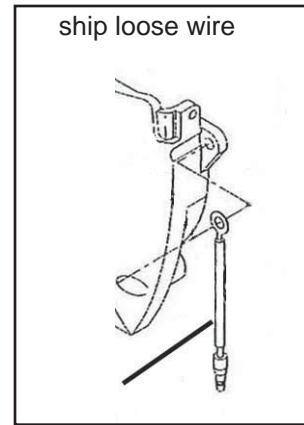
SECTION 9 FUEL TANK GROUP

FIG. 900



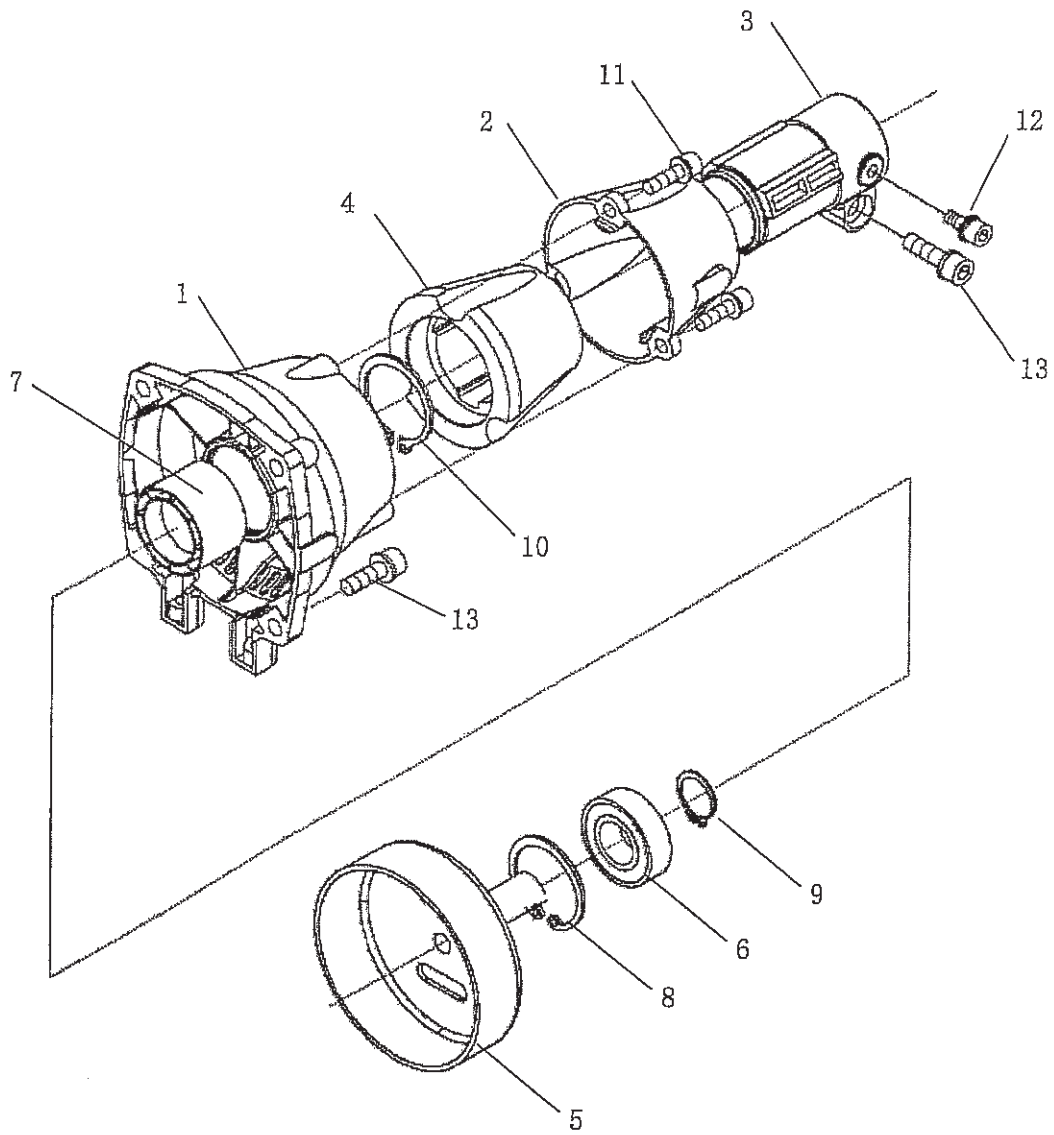
SECTION 10 FLYWHEEL & CLUTCH GROUP

FIG. 1000



SECTION 11 CLUTCH CASE GROUP

FIG. 1100

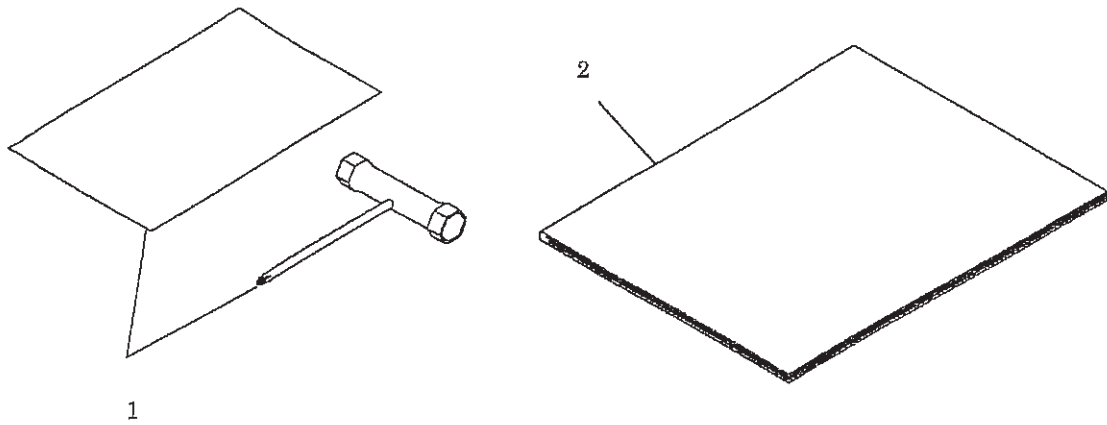


SECTION 11 CLUTCH CASE GROUP

REF.	PART NO.	DESCRIPTION	QTY.	REMARKS	FROM-TO	FIG.
1	634-15002-00	CASE, CLUTCH 1	1			1100
2	634-15003-00	CASE, CLUTCH 2	1			1100
3	634-15013-00	PIPE BRACKET	1			1100
4	634-15005-00	PIPE DAMPER	1			1100
5	634-20040-00	CLUTCH DRUM	1			1100
6	060-01798-10	BALL BEARING	1			1100
7	634-15006-00	SPACER	1			1100
8	003-14350-00	SNAP RING, INNER	1			1100
9	003-15170-00	SNAP RING, OUTER	1			1100
10	003-15320-00	SNAP RING, OUTER	1			1100
11	011-90599-50	SOCKET HEAD BOLT	3			1100
12	011-90597-80	SOCKET HEAD BOLT	1			1100
13	011-90697-50	SOCKET HEAD BOLT	5			1100

SECTION 12 ACCESSORIES GROUP

FIG. 1200



PRINTED IN THE USA