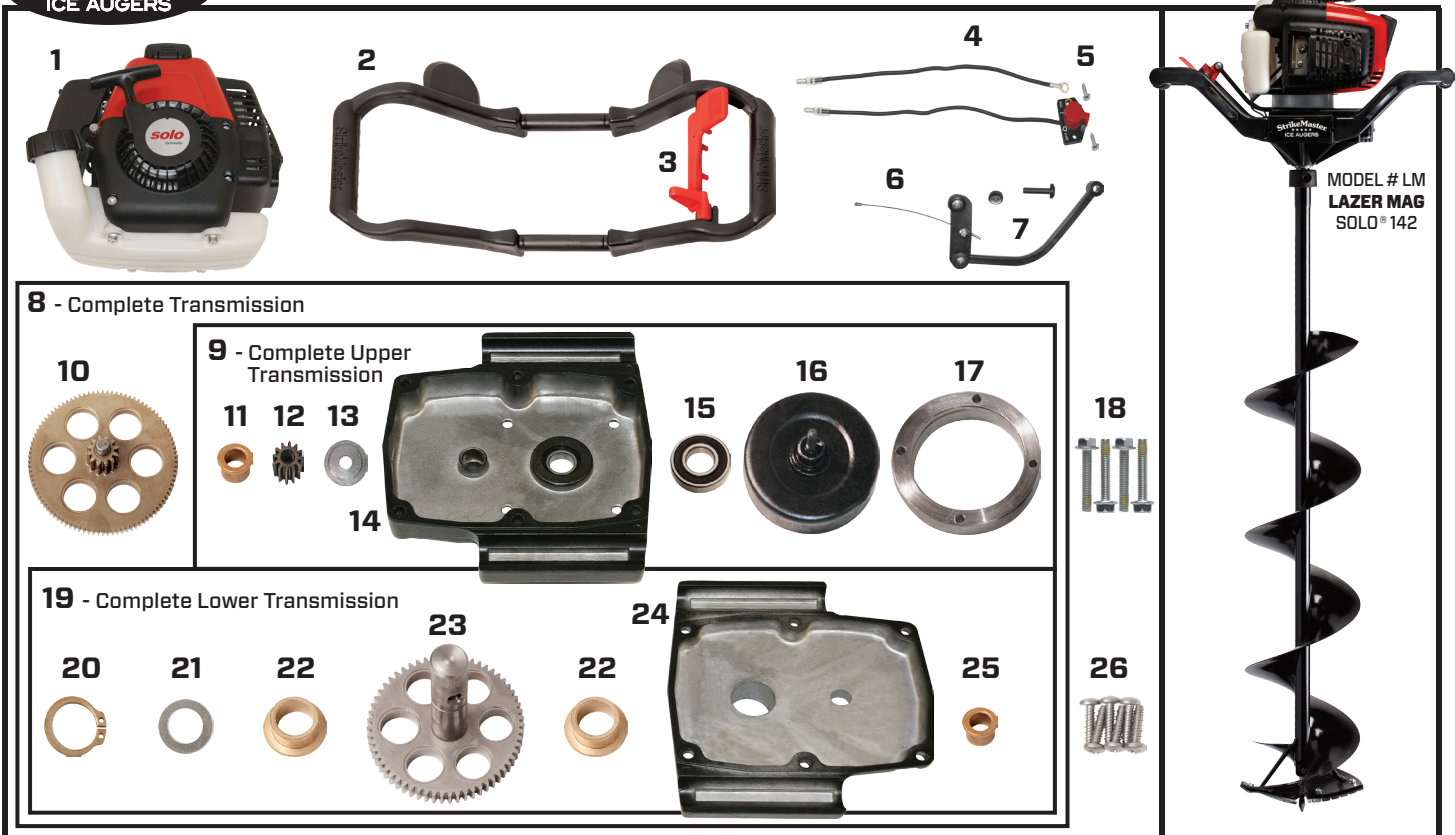




LM - LAZER MAG SOLO® 142 (ATC) 2009-2010 Parts List



MODEL # LM
LAZER MAG
SOLO® 142

Item Number	Part Number	Description	Quantity
1	151623	Solo 142 Engine	1
2	151364C	Composite Handle with Lever	1
3	151645	Throttle Lever with Screw	1
4	151401	Stop Switch Assembly	1
5	410090B	Stop Switch Screw	2
6	151505	Throttle Linkage Cable	1
7	151510	Throttle Linkage	1
8	140 R-B	Complete Transmission (Includes Aluminum Case, #9-Upper, #19-Lower & #10-Gear)	1
9	140 R-BU	Complete Upper Transmission (Includes #11, 12, 13, 14-Aluminum Case, 15, 16, & 17)	1
10	211310	40:1 Compound Gear	1
11	122210	Flange Bushing Compound (Upper)	1
12	140320	40:1 Pinion Gear	1
13	122910	Washer	1
14	140110	Transmission Aluminum Case (Upper- must order #8 or 9)	1
15	122205	Clutch Cup Bearing	1
16	122410	Clutch Cup Drum	1
17	—————	Ring Machined Spacer (Included with # 8 or 9-Complete Upper Transmission)	1
18	470840	Upper Transmission Bolt - 6mm x 1 x 40mm	4
19	140 R-BL	Complete Lower Transmission (Includes #20, 21, 22, 23, 24-Aluminum Case & 25)	1
20	122920	Snap Ring Output Shaft	1
21	122915	Output Shaft Washer	1
22	122215	Flange Bushing Output Shaft	2
23	122305	Output Shaft with Drive Gear	1
24	122105	Transmission Aluminum Case (Lower - must order #8 or 19)	1
25	122210	Flange Bushing Compound (Lower)	1
26	410011A	Lower Trans Screws Self Tap Philips	6

If your auger is still under warranty, please contact StrikeMaster Customer Service at service@normarkcanada.com. Please be advised, work performed outside of an authorized service center will void your StrikeMaster warranty. To purchase the parts listed, please contact one of our Canadian master service centers. SM10/14

Solo® Germany The registered Solo® trademark is licensed for use in the U.S. to the German company Solo Kleinmotoren GmbH by the U.S. affiliate, Solo incorporated.